

BILANCI ENERGJITIK 2023 (MWh)

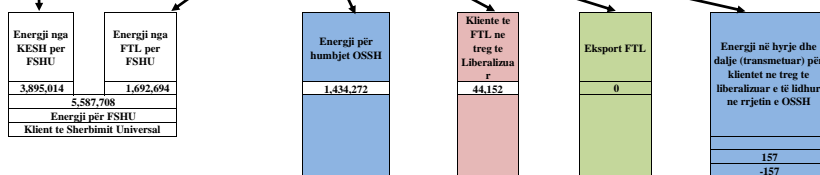
Prodhimi neto publik	
Prodhimi Neto KESH sha	
5,131,482	
Blerje KESH ne treg te liberalizuar	561,427
Prodhim+Blerje	5,692,909
Shkembime (hyrje) KEK	
Shkembime (dalje) KEK	1,797,895
Energji shterbime ndihmese+disbal	
Energji per FSHU nga KESH sha	3,895,014

Prodhuar nga PPE ne rrjetin e OSSH			Prodhuar nga PPE ne rrjetin e OST		Prodhues te pavarur						
HEC Selfe	HEC Priv/Kon ne Rrjetin e OSSH per FTL	Fotovoltaik (tote FTL)	HEC Priv/Kon ne Rrjetin e OST per FTL	HEC Ashta	HEC Danga	HEC Mogleka	HEC KURUM	HEC Peshqesh	HEC Fanga	HEC Qumi	Fotovoltaik (ne treg te bre)
23,244	982,392	61,989	1,085,256	287,628	177,181	303,365	366,975	102,939	250,141	4,158	18,885

Prodhim neto vendas	8,795,635
---------------------	-----------

Energji e siguruar nga FTL					
Blerje Neto (Seli)	Blerje HC.Priv/Kon ne Rrjetin e OSSH per FTL	Blerje FOTOVO L.TAIK	Blerje HC.Priv/Kon ne Rrjetin e OST per FTL	Blerje Neto Ashta	Blerje ne Treg te Liberalizuar nga FTL
23,244	982,392	61,989	1,085,256	287,628	730,766
					3,171,275

Balanca ne interkoneksion (dhenie)	919,812
------------------------------------	---------



KONSUMI I ENERGJISE NE SHQIPERI	7,875,861
---------------------------------	-----------

7,875,823

Burimi: OST sha; KESH sha; OSSH sha; FSHU sha; FTL sha; (OSHEE Group sha)

TABELA ME TE DHENA PERIODIKE (MUJORE) TE OSHEE Sh.a 2022
Janar Shkurt Mars Prill Maj Qershor Korrik Gusht Shtator Tetor Neutor Dijejtor Progressive
A Energji Totale e Hye ne OSHEE Sha (MWh) A=A.1+A.3+A.1.7 699,061 657,581 613,056 558,722 504,227 501,704 609,571 599,268 505,838 495,084 583,921 733,734 7,084,213
A.1 Energji e transmetuar nepermjet OST per llogari te OSHEE Sha A.1=Sum(A.1.1+A.1.6) 579,063 578,104 474,777 430,748 381,351 400,494 563,277 573,575 485,373 470,263 460,400 600,279 5,997,703
A.1.1 Nga KESH Gen nepermjet OST 411,308 474,700 310,547 226,807 129,492 178,720 422,634 477,585 398,134 347,440 189,769 327,787 3,895,014
A.1.2 Nga OST si input i OSHEE Sha 3,984 3,960 3,715 57,327 92,381 100,499 80,695 61,820 58,831 89,873 88,903 89,579 730,766
A.1.3 Energji e transmetuar per kliente 35kV (te dal ne treg te parregulluar furnizues te tjere) 21 19 26 30 43 19 - - - - - - - 157
A.1.4 Nga OST per llogari te klienteve te OSHEE Sha prodhuarnga HEC-et ne rrejetin e trans 163,750 100,025 160,488 146,495 159,435 121,256 59,948 34,171 28,408 32,950 181,728 183,113 1,371,766
A.1.5 Nga TEC VLORA nepermjet OST n/a n/a n/a n/a n/a n/a n/a n/a n/a n/a n/a n/a n/a
A.1.6 Nga Biserica 1.2 nepermjet OST n/a n/a n/a n/a n/a n/a n/a n/a n/a n/a n/a n/a n/a
A.1.7 Esonet OSHEE Grupi Sha n/a n/a n/a n/a n/a n/a n/a n/a n/a n/a n/a n/a n/a
A.2 Energji elektrike e injektuar ne OST nga Hec-et Lokale A.2 59,687 29,705 75,556 68,977 67,556 54,066 14,241 4,573 3,325 3,956 67,266 67,607 516,517
A.3 Energji e transmetuar direkt ne rrejetin e OSHEE Sha A.3 = Sum(A.3.1, A.3.5) 119,998 79,477 138,280 127,974 122,876 101,210 46,294 25,693 20,465 24,822 123,521 133,455 1,086,510
A.3.1 HEC Ulez/Lanabregas 1,990 1,984 2,352 2,231 2,259 1,955 1,859 1,819 1,435 1,126 2,044 2,191 23,244
A.3.2 Impiantet Private me Koncesion 115,928 74,408 132,656 121,564 114,368 92,807 36,581 16,598 13,324 18,209 117,880 128,069 982,292
A.3.3 Burimet e Rinovueshme Fotovolvrik (BRE) 2,081 3,086 3,272 4,179 6,249 6,449 7,854 7,276 5,706 5,487 3,597 3,196 58,430
A.3.4 Prashimi i injektuar ne OSHEE nga BREE+ ne Treg te Parregulluar 1,528 2,360 2,652 2,969 1,958 1,958 2,105 2,480 2,131 1,527 1,196 797 741 22,444
B Energji Totale ne Rrejetin e Shperdarjes (MWh) B=A+ A.1.3+A.2 758,748 687,286 688,613 627,700 571,783 555,770 623,813 603,841 509,163 499,041 651,187 801,341 7,578,286
C Humbjete Totale ne Rrejetin e Shperdarjes (MWh) C=C.1+C.2+C.3 195,699 131,027 144,936 117,090 95,359 89,146 109,054 97,670 75,381 87,928 118,529 172,455 1,434,274
C.1 Humbjete Teknike ne Zona (MWh) 9,646 8,281 8,784 6,506 8,231 8,106 9,590 8,151 6,124 7,168 8,117 9,463 98,166
C.2 Humbjete Teknike ne Zona (MWh) 114,969 83,263 87,857 72,373 57,936 55,846 71,582 66,209 48,509 49,986 75,327 108,477 892,334
C.3 Humbjete Jo Teknike ne Zona (MWh) 71,085 39,483 48,295 38,211 29,193 25,194 27,883 23,309 20,748 30,773 35,084 54,515 443,774
C.1 Humbjete Totale ne OSHEE Sha (%) C.1=C/B 25,799% 19,067% 21,055% 18,687% 16,687% 16,047% 17,487% 16,177% 14,807% 17,627% 18,207% 21,522% 18,937%
C.1.1 Humbjete Teknike ne Zona (%) 1,278 1,293 1,288 1,043 1,448 1,465 1,548 1,358 1,294 1,418 1,258 1,188 1,305
C.2.1 Humbjete Teknike ne Zona (%) 15,369 12,277 12,933 11,668 10,299 10,209 11,669 11,128 9,659 10,178 11,728 13,718 11,944
C.2.1 Humbjete Jo Teknike ne Zona (%) 9,378 5,748 7,601 6,099 5,118 4,538 4,478 3,896 4,078 6,178 5,399 6,808 5,869
D Energji e perdorur ne Rrejetin e Shperdarjes D=Sum(D.1-D.7) 560,438 553,736 540,611 507,624 473,583 462,399 507,247 498,418 428,372 405,577 526,852 623,846 6,088,701
D.1 Shtur Klienteve FFM (MWh) D.1=D.1.1+D.1.2 87,526 86,617 92,750 82,632 87,681 85,890 99,601 96,563 88,715 88,854 97,395 97,622 1,091,845
D.1.1 Shtur Klienteve FFM Privat (MWh) 38 29 1,747 80 119 229 50 118 76 475 440 139 3,540
D.1.2 Shtur Klienteve FFM Jofaboretore (MWh) 1,963 1,497 (4,126) 1,484 1,604 1,842 1,813 1,984 1,637 1,756 321 3,164 17,639
D.1.3 Shtur Klienteve FFM 2010's (MWh) 85,525 85,091 92,429 81,068 85,958 83,819 97,738 94,641 87,001 86,624 96,633 94,319 1,070,666
D.2 Shtur Klienteve Private (MWh) D.2= 90,903 96,966 87,186 84,353 84,530 94,649 125,236 125,931 104,009 88,917 91,239 105,661 1,179,581
D.2.1 Shtur nga rrejet i Transmetimit per llogari te OSHEE Sha - - - - - - - - - - - - - -
D.2.2 Shtur per nevoja te veta te OSHEE Sha 645 658 693 562 421 319 436 457 328 391 516 626 6,051
D.2.3 Shtur Klienteve Private (ne ate nje nevojat e veta dhe Ne TL) 90,258 96,308 86,494 83,791 84,199 94,330 124,800 125,474 103,682 88,526 90,723 105,054 1,173,530
D.3 Shtur Klienteve Jofaboretore (MWh) 3,171 3,283 3,066 2,842 2,865 2,626 3,277 3,242 2,772 2,686 3,193 3,524 36,549
D.4 Shtur Klienteve Buxhetore (MWh) 14,725 15,636 13,342 12,204 10,127 9,131 10,390 10,239 10,643 10,999 13,977 17,196 148,699
D.5 Shtur Klienteve Familjare (MWh) D.5=D.5.1+D.5.2 304,405 321,511 268,684 256,586 220,781 216,017 254,501 257,870 218,908 210,164 253,782 332,235 3,115,442
D.5.1 Shtur Klienteve Familjare (MWh) 296,730 314,046 260,733 249,206 213,201 206,933 246,502 249,893 210,912 202,352 245,926 323,804 3,020,327
D.5.2 Shtur Klienteve Familjare per Ambientet e Purbashketa 7,675 7,464 7,951 7,380 7,580 5,083 8,000 7,977 7,997 7,812 7,855 8,431 95,115
D.6 Energji elektrike e injektuar ne OST nga Hec-et Lokale D.6=A.2 59,687 29,705 75,556 68,977 67,556 54,066 14,241 4,573 3,325 3,956 67,266 67,607 516,517
D.7 Energji elektrike e perdorur nga klientet ne treg te parregulluar D.7 21 19 26 30 43 19 - - - - - - - 157
E Faturuar muaji Parardhes (000leke) 7,458,986 7,236,860 7,477,014 6,588,875 6,321,511 5,993,172 6,074,125 7,326,635 7,281,460 6,339,551 5,987,458 6,806,859 80,892,507
F Arketimet e muajit aktual (000 leke) G=F.1+F.2+F.3+F.4 6,881,621 6,813,758 7,491,687 6,124,229 6,813,596 5,811,853 5,684,626 7,440,201 7,365,263 7,213,799 6,213,162 6,581,269 80,435,065
F.1 Arketuar per faturat korrente te vitit aktual 17,571 4,658,797 5,070,755 3,091,044 4,170,066 3,615,891 3,310,557 4,414,029 4,472,047 4,133,051 3,688,197 4,436,120 45,074,124
F.2 Arketuar per faturat e tjera te vitit aktual - - 1,589,230 2,664,176 2,335,047 1,934,852 2,106,438 2,562,075 2,469,763 2,666,282 2,346,865 1,985,773 22,662,602
F.3 Arketuar per faturat e tjera te vitit aktual 6,864,050 2,154,961 831,603 367,010 308,483 261,110 267,632 464,097 423,452 414,465 178,100 159,376 12,694,339
F.4 Arketimet e muajit aktual (%) F.1=F/E 92,3% 94,2% 94,2% 67,8% 92,9% 107,8% 97,0% 93,6% 101,6% 101,2% 113,8% 103,8% 96,7% 99,4%
F.1.1 Arketuar per faturat korrente te vitit aktual (%) F.1.1=F.1/E 0,2% 64,4% 67,8% 46,9% 66,0% 60,3% 54,5% 60,2% 61,4% 65,2% 61,6% 65,2% 55,7%
F.1.2 Arketuar per faturat e tjera te vitit aktual (%) F.1.3=F.2/E 0,0% 0,0% 21,3% 40,5% 36,9% 32,3% 34,7% 35,0% 33,9% 42,1% 39,2% 29,2% 28,0%
F.1.3 Arketuar per faturat e tjera te vitit aktual (%) F.1.4=F.3/E 92,0% 29,8% 11,1% 5,6% 4,9% 4,4% 4,4% 6,3% 5,8% 6,5% 3,0% 2,3% 15,7%
G Faturuar muaji Raportues (000leke) 7,236,860 7,477,014 6,588,875 6,321,511 5,993,172 6,074,125 7,326,635 7,281,460 6,339,551 5,987,458 6,806,859 7,982,027 81,415,549

Burimi: OSSH sha; FSHU sha; FTI sha; OSHEE Group sha

BILANCI OSSH, FSHU,FTL sha 2023 (12-mujori)		
1	ENERGJI TOTALE E HYRE NE RRJETIN E OSSH-se	7,084,213
2	Energji e shitur nga KESH sha per FSHU sha	3,895,014
3	ENERGJI NE HYRJE E BLERE NGA FTL (OSHEE sha)	3,171,275
3.1	Blere nga Prodhimi i PPE në rrjetin e O	1,067,625
3.2	Blere nga Prodhimi i PPE në rrjetin e O	1,372,884
3.3	Blere ne Treg të Liberalizuar nga FTL s	730,766
4	ENERGJI NE DALJE NGA FTL (OSHEE sha)	3,171,275
4.1	Energji nga FTL per FSHU	1,692,694
4.2	Energji nga FTL për humbjet OSSH	1,434,272
4.3	Energji e shitur nga FTL ne treg te liberalizuar	44,152
4.4	Eksport i FTL	-
4.5	Energji vetem per tu transmetuar tek klientet ne treg te liberalizuar (ne rrjetin e OSSH)	157
7	ENERGJI QE KALON NE RRJETIN E OSSH-se	7,578,286
7.1	Energji totale e transmetuar nga OST ne rrjetin e Shpërndarjes	6,491,776
7.2	Energji e transmetuar direkt ne rrjetin e Shpërndarjes nga impiantet e lidhur ne rrjetin	569,993
7.3	Energjia e ngitur ne rrjetin e transmetimit nga centralet e lidhura ne rrjetin e OSSH	516,517
8	Humbje totale ne rrjetin e OSSH-se (%)	18.93

Burimi: OSSH sha; FSHU sha; FTL sha;

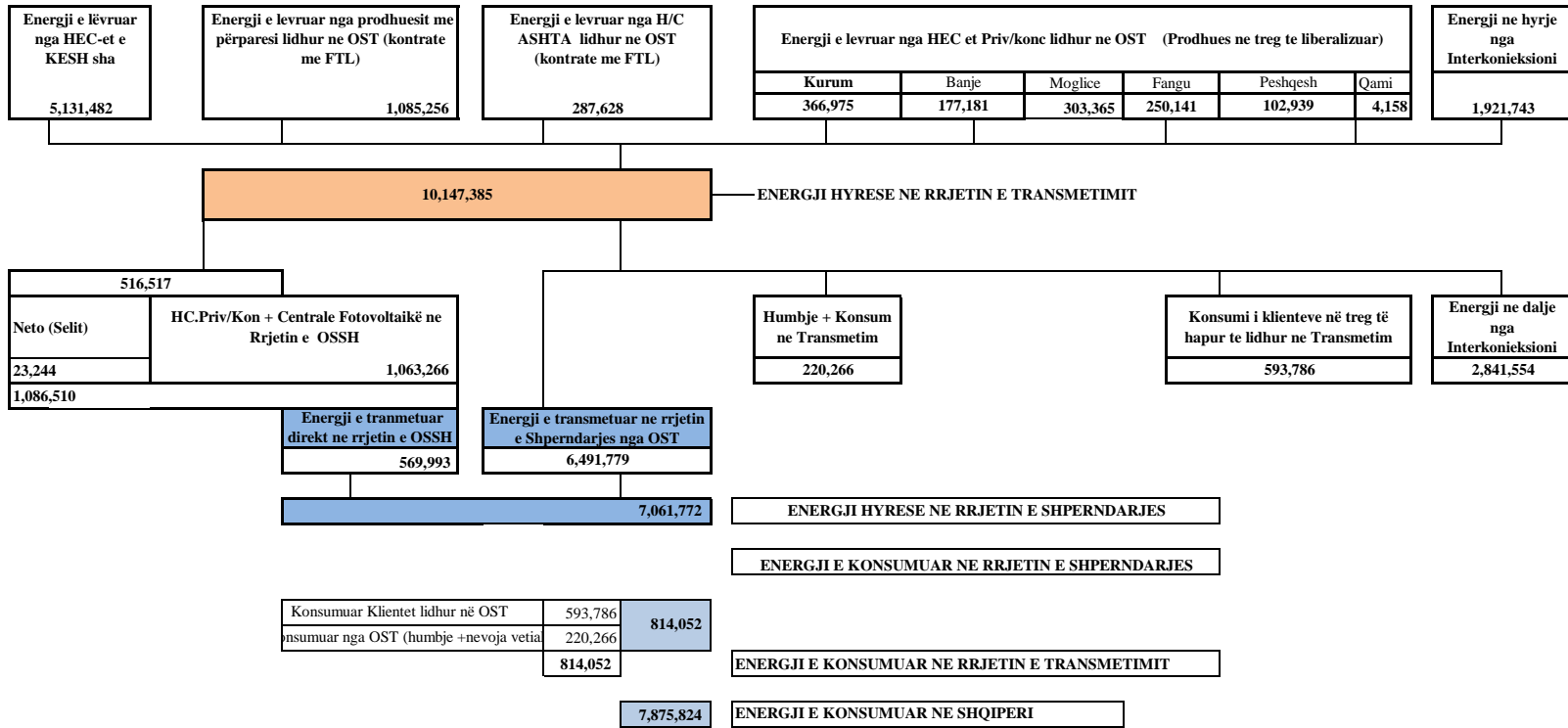
	Janar	Shkurt	Mars	Prill	Maj	Qershor	Korrik	Gusht	Shtator	Tetor	Nentor	Dhjetor	2023		
HYRIJE	Dhene nga H/C e KESH ne rrjetin e Transmetimit	665,048	599,427	350,763	318,558	488,334	381,563	405,103	455,548	377,610	283,354	302,755	503,420	5,131,482	10,147,383
	Dhene nga H/C e me perparesi ne rrjetin e Transme	129,234	69,919	138,215	127,256	133,255	100,979	41,042	12,983	9,130	16,838	157,349	153,214	1,089,413	
	Energji nga Hec-et Lokale levruar ne Rrjetin e Tra	59,687	29,705	75,556	68,977	67,556	54,066	14,241	4,573	3,325	3,956	67,266	67,607	516,516	
	Gjenerim KURUM (prodhues i pavarur)	44,271	41,090	36,363	34,900	45,761	26,674	26,849	13,613	12,370	12,028	31,130	41,927	366,975	
	HEC ASHTA (prodhues i pavarur Kontr.me OSHE	35,169	30,291	23,019	20,043	26,672	20,513	18,998	21,314	19,370	16,195	25,307	30,736	287,628	
	HEC BANJE (prodhues i pavarur)	19,006	17,988	18,262	12,703	7,780	20,938	10,916	7,489	5,847	9,330	20,521	26,401	177,181	
	HEC MOGLICE (prodhues i pavarur)	30,090	33,919	31,602	23,209	12,164	37,614	14,178	7,089	16,866	20,311	33,550	42,773	303,365	
	HEC PESHQESH-T1/637 (prodhues i pavarur)	13,532	6,558	13,089	12,741	9,140	5,257	2,507	1,463	1,281	2,232	18,131	17,008	102,939	
	HEC FANGU (prodhues i pavarur)	41,733	21,699	32,666	20,161	17,504	6,123	4,155	8,673	17,951	12,041	26,254	41,182	250,141	
Importi(Hyre) nga Linjat e Interkonjeksionit	51,364	63,212	131,284	135,881	106,085	113,475	235,733	250,341	268,859	288,745	150,269	126,494	1,921,743		
DALJE	Humbjet ne Transmetim	25,216	17,110	19,532	18,151	22,863	16,197	16,646	15,842	13,113	11,825	20,363	23,408	220,266	10,147,383
	Transmetuar ne Rrjetin e Shperndarjes	637,223	605,449	547,681	496,756	446,949	452,455	575,038	576,018	487,171	473,023	526,870	667,145	6,491,777	
	Klientene treg te hapur (TL)	38,979	25,586	32,684	59,843	80,042	76,540	57,032	48,438	47,465	43,669	41,029	42,481	593,786	
	Eksporti (Dale) nga Linjat e Interkonjeksionit	387,717	265,662	250,922	199,681	364,397	222,009	125,007	142,789	184,860	136,512	244,271	317,728	2,841,555	
Humbjet ne Transmetim	25,216	17,110	19,532	18,151	22,863	16,197	16,646	15,842	13,113	11,825	20,363	23,408	220,266		
Humbjet ne Transmetim ne %	2.32	1.87	2.30	2.34	2.50	2.11	2.15	2.02	1.79	1.78	2.45	2.23	2.14		

Burimi: OST sha

OST sha	Njësia e Matjes MWh	Janar	Shkurt	Mars	Prill	Maj	Qershor	Korrik	Gusht	Shtator	Tetor	Nëntor	Dhjetor	Shuma 2023 [MWh]
Prodhimi nga KESH_GEN në Rrjetin e Tra	1	665,048	599,427	350,763	318,558	488,334	381,563	405,103	455,548	377,610	283,354	302,754	503,420	5,131,482
Prodhimi nga HEC/HPP e vogla në Rrjetin	2	59,687	29,705	75,556	68,977	67,556	54,066	14,241	4,573	3,325	3,956	67,266	67,607	516,517
Prodhimi nga PPE/IPP e mëdha në Rrjetin e	3	129,234	69,919	138,215	127,256	133,255	100,979	41,042	12,984	9,130	16,838	157,348	153,214	1,089,413
Prodhimi nga HEC Peshqesh	4	13,532	6,558	13,089	12,741	9,140	5,257	2,507	1,463	1,281	2,232	18,131	17,008	102,939
Prodhimi nga HEC Banja	5	19,006	17,988	18,262	12,703	7,780	20,938	10,916	7,489	5,847	9,330	20,521	26,401	177,181
Prodhimi nga HEC FANG	6	41,733	21,699	32,666	20,161	17,504	6,123	4,155	8,673	17,951	12,041	26,254	41,182	250,141
Prodhimi nga HEC Moglicë	7	30,090	33,919	31,602	23,209	12,164	37,614	14,178	7,089	16,866	20,311	33,550	42,773	303,365
Prodhimi nga nga HEC Ashta	8	35,169	30,291	23,019	20,043	26,672	20,513	18,998	21,314	19,370	16,195	25,307	30,736	287,628
Prodhimi nga KURUM (Ulez-Shkopet&B	9	44,271	41,090	36,363	34,900	45,761	26,674	26,849	13,613	12,370	12,028	31,130	41,927	366,975
Eksporti (-) nga Linjat e Interkonjeksionit	D	387,717	265,662	250,922	199,681	364,397	222,009	125,007	142,789	184,860	136,512	244,271	317,728	2,841,554
Importi (+) nga Linjat e Interkonjeksionit	R	51,364	63,212	131,284	135,881	106,085	113,475	235,733	250,341	268,859	288,745	150,269	126,494	1,921,743
Balanca (Total Interkonjeksioni)	11=(R-D)	336,353	202,450	119,638	63,799	258,312	108,535	(110,726)	(107,553)	(83,999)	(152,233)	94,002	191,234	919,812
Energjia Totale në Marrje	3+4+5+6+7+8+	1,089,134	913,807	850,819	774,430	914,251	767,200	773,722	783,086	732,609	665,030	832,532	1,050,761	10,147,383
Humbjet në Rrjetin e Transmetimit (përfsh	13	25,216	17,110	19,532	18,151	22,863	16,197	16,646	15,842	13,113	11,825	20,363	23,408	220,266
Humbjet në Rrjetin e Transmetimit %	14=13/12	2.32	1.87	2.30	2	3	2	2	2.02	1.79	1.78	2.45	2.23	2
Energjia Totale në Dhënie	15=(12-13)	1,063,918	896,697	831,287	756,279	891,388	751,004	757,077	767,244	719,496	653,205	812,169	1,027,353	9,927,116
Transmetuar në Linjat e Interkonjeksionit	16=D	387,717	265,662	250,922	199,681	364,397	222,009	125,007	142,789	184,860	136,512	244,271	317,728	2,841,554
Transmetuar tek Klientët e Kualifikuar		38,979	25,586	32,684	59,843	80,042	76,540	57,032	48,438	47,465	43,669	41,029	42,481	593,786
EL220-L220KURUM/337		17,724	3,540	1,712	15,407	33,141	30,601	3,313	3,339	2,360	2,706	1,390	1,149	116,381
Titan T1,T2		9,331	4,543	7,006	10,642	11,097	10,636	11,282	10,350	5,451	7,616	11,042	10,889	109,885
FUSHE KRUIJE 220kV-T2/058		-	409	3,878	1,910	2,903	1,997	8,346	2,418	6,068	7,345	4,471	6,333	46,077
N/ST 220/6,3Colacent-T1/336		631	910	2,421	1,371	1,130	2,168	1,619	216	1,922	1,400	1,035	819	15,641
N/ST i GSA EL 110kV-T1/694		10,555	15,188	-	-	-	-	-	-	-	3,081	8,621	8,589	46,034
N/ST i GSA EL 110kV-T2/960		-	219	15,779	16,873	17,440	16,979	17,438	17,030	17,081	7,272	-	-	126,110
N/ST I CWI Albania T1/148		477	464	469	574.19	516	484	162	294	372	387	326	103	4,629
N/ST i AES EL 110kV-T1/690		30	48	-	-	1,491	6,969	7,274	7,290	3,460	4,578	7,583	7,608	46,332
N/ST I AES EL 110kV-T2/692		111	84	1,175	6,722	5,719	-	-	6	3,636	1,488	-	-	18,941
HEC Moglice T1,T2,T3		1	2	3	1	2.29	2	0.6	0.9	1	1	7	1	22
HEC Peshqesh-T1/633		7	20	4	3.52	6	20	31	32	30	27	2	1	186
Lajthiza T1/742		19	61	1	0.77	8	138	448	381	378	445	39	2	1,920
HEC Ashta1-T1,HEC Ashta2-T1,		0.13	-	-	0.00	-	-	-	-	-	0.08	-	-	0
HEC Banje T1,T2		14	14	18	15	25	18	21	18	20	18	14	11	206
HEC Fang-T1,T2.		10	27	19	36	34	48	52	47	23	21	15	9	340
Gjenerim KURUM		9.11	0	1	16.25	0.93	7	8	47	43	54	13	0	198
FERRO KROM-F1,F2,F3,F4		60	57	200	6,272	6,528	6,474	7,038	6,969	6,619	7,231	6,471	6,966	60,884
Transmetuar në rrjetin e Shpërndarjes		637,223	605,449	547,681	496,756	446,949	452,455	575,038	576,018	487,171	473,023	526,870	667,144	6,491,776
ansmetuar në rrjetin e Shpërndarjes 110 kV		557,157	527,056	480,865	437,248	395,459	400,674	507,076	509,662	427,735	412,241	462,556	582,677	5,700,407
ansmetuar në rrjetin e Shpërndarjes 35 kV		43,042	41,140	35,667	31,282	28,494	29,728	39,388	38,182	35,331	35,464	34,420	42,588	434,726
tuar në rrjetin e Shpërndarjes 6, 10, 20 kV		37,023	37,253	31,148	28,227	22,996	22,053	28,574	28,174	24,105	25,318	29,894	41,879	356,643

Burimi: OST sha

PARAQITJA SKEMATIKE E FLUKSEVE TE ENERJISE NE SISTEMIN ELEKTRO-ENERGJITIK SHQIPETAR VITI 2023 (MWh)



LEGJENDA	
FSHU	FURNIZUES I SHËRBIMIT UNIVERSAL
EMF	FURNIZUES I MUNDËSISË SË FUNDIT

Burimi: OST sha; KESH sha; OSSH sha; FSHU sha; FTL sha; (OSHEE Group sha)

PRODHIMI GJATE VITIT 2023 NGA CENTRALET E LIDHURA NE RRJETIN E TRANSMETIMIT (MWh)																
CENTRALI PRODHUES	MW	SUBJEKTI	LIDHJA	JANAR	SHKURT	MARS	PRILL	MAJ	QERSHOR	KORRIK	GUSHT	SHTATOR	TETOR	NENTOR	DHJETOR	2023
HEC "Fierze"	500.000	"KESH" sha	220 kV	665,048	599,427	350,763	318,558	488,334	381,563	405,103	455,548	377,610	283,354	302,754	503,240	5,131,482
HEC "Koman"	600.000		220 kV													
HEC "V. Dejes"	250.000		220 kV													
Tec Vlora	98.000	"KESH" sha	220 kV													
	1,448.000															5,131,482
HEC "Ulez"	25.200	"Kurum International" sh.a.	110 kV	44,271	41,090	36,363	34,900	45,761	26,674	26,849	13,613	12,370	12,028	31,130	41,927	366,977
HEC "Shkopet"	24.000		110 kV													
HEC "Bistrica 1"	22.500		110 kV													
HEC "Bistrica 2"	5.000		110 kV													
HEC "Peshqesh"	28.000	"Ayen As Energji" sha	220 kV	13,532	6,558	13,089	12,741	9,140	5,257	2,507	1,463	1,281	2,232	18,131	17,008	102,939
HEC "Fangu"	74.600		220 kV	41,733	21,699	32,666	20,161	17,504	6,123	4,155	8,673	17,951	12,041	26,254	41,182	250,142
HEC "Banje"	73.000	"Devoll Hydropower" sha	110 kV	19,006	17,988	18,262	12,703	7,780	20,938	10,916	7,489	5,847	9,330	20,521	26,401	177,181
HEC "Moglice"	184.000	"Devoll Hydropower" sha	111 kV	30,090	33,919	31,602	23,209	12,164	37,614	14,178	7,089	16,866	20,311	33,550	42,773	303,365
HEC Qami-1	1.730	"Lajthiza Invest" shpk		592	126	659	702	430	83	3	68	58	23	696	718	4,158
	438,030															1,204,762
HEC "Ashta"	48.200	"Energji Ashta" shpk	110 kV	35,169	30,291	23,019	20,043	26,672	20,513	18,998	21,314	19,370	16,195	25,307	30,736	287,627
																287,627
HEC "Bishnica 2"	2.500	"HEC Bishnica 1,2" shpk	110 kV	1,152	670	1,405	1,312	1,203	819	414	234	174	243	1,307	1,644	10,578
HEC "Dardhe"	5.800	"Wenerg" shpk	110 kV	2,658	941	2,284	2,731	1,626	1,138	129	(12)	12	147	2,557	2,762	16,972
HEC "Truen"	2.500	"TRUEN" shpk	110 kV													
HEC "Ternove"	8.385	"TEODORI 2003" shpk	110 kV	932	1,241	1,325	1,305	1,204	590	(14)	(13)	(13)	(14)	1,241	2,092	9,876
HEC "Gjorice"	29.610	"DITEKO" shpk	110 kV	15,292	11,680	16,101	14,594	12,802	9,566	6,046	3,571	3,475	4,388	14,964	18,487	130,966
HEC "Slabinje 2C"	3.400	"Hidropower Elektrik" shpk	110 kV	1,015	642	1,454	1,371	1,972	1,512	684	358	253	132	668	563	10,623
HEC "Slabinje 2D"	4.885		110kV	1,166	491	1,577	1,202	1,752	1,343	423	136	66	77	1,079	1,104	10,416
HEC "Slabinje 2E"	3.800		110 kV	1,573	613	2,003	1,653	2,103	1,557	366	170	70	84	1,493	1,862	13,547
HEC "Slabinje"	13.800	"Power-Elektrik-Slabinje" shpk	110 kV	4,219	2,169	5,452	4,523	4,974	3,719	1,580	899	527	583	4,097	5,161	37,902
HEC "Bele 1"	5.000	"Euron Energy" shpk	110 kV	15,244	10,142	17,429	19,483	20,210	19,184	10,197	3,090	1,287	1,438	15,026	20,116	152,846
HEC "Topojan 2"	5.800															
HEC "Bele 2"	11.000															
HEC "Topojan 1"	2.900															
HEC "Orgjost I RI"	4.800	"Energjal" shpk														
HEC "Cerruje-1"	2.300	"Energy partners AI" shpk	110 kV	1,460	641	2,173	2,546	2,939	1,897	365	(11)	18	178	3,901	2,695	18,801
HEC "Cerruje-2"	2.800															
HEC "Rrupe"	3.600															

HEC "Lozhan"	0.100	"Balkan Green Energy" shpk	10kV	44	26	59	63	55	27	0	0	0	0	20	21	315
HEC "Barmash"	0.830		10kV	138	209	233	137	117	118	62	0	0	0	33	66	1,113
HEC "Treske 2"	0.250		10kV	86	86	124	99	95	82	25	0	0	0	41	90	729
HEC "Nikolice"	0.700		10kV	159	112	202	222	255	198	135	70	60	42	153	196	1,804
HEC "Funares"	1.920		10kV	852	849	821	868	835	738	232	0	68	218	637	791	6,908
HEC "Lunik"	0.200		10kV	143	134	135	144	139	107	0	0	0	0	162	122	1,086
HEC "Kerpice"	0.420		6kV	70	47	59	57	64	72	66	73	70	60	52	0	690
HEC "Ujanik"	0.630		10kV	132	89	172	140	110	102	47	0	13	20	89	138	1,052
HEC "Borsh"	0.250		6kV	62	113	78	119	96	82	35	32	42	36	30	73	798
HEC "Leshnice"	0.380		10/6kv	104	121	115	83	69	41	24	4	0	0	23	44	627
HEC "Velcan"	1.200		10kV	413	286	619	463	743	511	175	64	1	0	275	419	3,969
HEC "Muhur"	0.250		6kV	76	75	84	72	66	24	0	0	39	45	52	72	605
HEC "Rajan"	1.020		10kV	276	371	494	321	246	179	96	0	0	0	87	182	2,252
HEC "Lure"	0.750		10kV	78	16	43	30	33	5	0	0	0	0	0	0	206
HEC "Gjanç "	3.700	"Spahiu Gjanç" sh.p.k.	35 kV	0	5	0	0	539	1,170	1,755	1,703	901	0	643	1,534	8,250
HEC "Bogove"	2.500	"Wonder power" sha	35 kV	993	689	1,330	813	965	1,194	297	48	0	6	1,001	1,004	8,339
HEC "Xhyre"	0.570	"Amal" sh.p.k	10kV	241	207	227	210	216	184	119	84	54	47	71	166	1,824
HEC "Stranik"	4.600	"Hidro Invest 1" shpk	35kV	1,875	1,060	2,117	1,829	1,364	841	215	0	0	70	1,615	2,170	13,155
HEC "Zall Tore"	3.000		35kV	1,468	885	1,666	1,580	1,171	792	446	214	0	173	1,271	1,794	11,458
HEC "Klos"	1.950	"Malido-Energji" shpk	6kV	568	313	512	406	329	201	65	0	0	0	420	735	3,549
HEC "Borje-Oreshke"	1.500	"HIDROALBANIA Energji" shpk	35kV	2,275	1,448	2,495	2,830	3,813	3,156	1,803	649	542	588	2,266	3,065	24,930
HEC "Cernaleve "	2.950		35kV	989	585	1,018	1,235	1,848	1,388	680	269	198	175	889	1,421	10,695
HEC "Cernaleve 1"	3.270		35kV	1,087	641	1,129	1,345	2,039	1,542	755	303	217	203	983	1,609	11,853
HEC "Murdhar 1"	2.680	"HydroEnergy" shpk	10kV	1,654	1,072	1,579	1,915	1,050	748	195	56	34	64	1,919	1,558	11,845
HEC "Murdhar 2"	1.000		10kV	964	621	906	1,141	624	373	90	27	17	35	1,086	937	6,822
HEC "Dishnice"	0.200	"Dishnica Energji" shpk	10kV	30	22	51	70	79	47	31	13	9	7	16	25	400
HEC "Lubonje"	0.300	"Elektro Lubonja" shpk	10kV	90	57	97	66	68	33	0	0	0	0	96	68	574
HEC "Peshk"	3.430	"Koka & Ergi Energy Peshk" shpk	35kV	1,564	924	2,143	1,952	1,435	1,429	377	0	87	287	1,919	1,714	13,830
HEC "Labinot -Mal"	0.250	"Ansara Koncension" shpk	6kV	42	43	42	44	44	30	18	5	0	0	28	42	337
HEC "Pobreg"	12.300	"Energy Plus" shpk	35kV	5,448	3,469	6,101	6,915	7,184	6,590	2,578	235	395	607	4,971	6,989	51,482
HEC "Vlushe"	14.200	"Hec Vlushe" shpk	35kV	5,707	2,602	5,944	4,223	5,330	4,042	708	0	55	405	5,886	4,098	38,999
HEC "Belesova 1"	0.150	"Korkis 2009" shpk	6kV	17	6	18	0	28	11	0	0	0	0	0	0	80

HEC "Faqekuq 1,2"	6.400	"HP OSTROVICA ENERGY" shpk	35kV	1,709	882	2,227	2,198	3,554	2,092	419	190	102	129	2,545	1,834	17,881
HEC "Shemri"	1.000	"Erald Energjistik" shpk	10	454	123	438	440	242	190	0	0	0	0	300	408	2,595
HEC "Mgulle"	0.280		10kV	247	163	297	293	230	160	2	0	0	8	238	314	1,951
HEC "Kryezi 1"	0.600	"Bekim Energjistik" shpk	10kV	545	212	516	555	298	68	0	0	0	32	748	605	3,577
HEC "Selishte"	2.000	"Selishte" shpk	35kV	795	474	1,131	1,022	810	499	187	124	42	36	799	1,136	7,055
HEC "Carshove"	1.500	"ERMA MP" shpk	10kV	408	404	460	307	304	299	64	0	6	25	266	351	2,895
HEC "Ura e Dashit"	1.200		10kV	1,411	1,059	1,609	1,015	946	1,150	190	17	36	62	1,133	1,243	9,869
HEC "Gizavesh"	0.500	"Dosku Energy" shpk	10kV	362	298	0	0	0	0	0	0	0	0	0	0	660
HEC "Koka 1"	3.200	"Snow Energy" shpk	35kV	573	312	1,015	1,095	666	680	230	120	1	1	1,318	877	6,891
HEC "Stravaj"	3.600	"Stravaj Energji" shpk	35kV	1,664	897	1,934	1,725	1,182	844	305	116	55	216	1,447	2,036	12,421
HEC "Picar 1"	0.200	"Peshku Picar 1" shpk	6kV	67	96	83	63	52	40	36	25	15	5	7	45	532
HEC "Vertop"	1.520	"Hydro Salillari Energy" shpk	35kV	297	190	270	244	50	149	70	0	0	0	0	202	1,473
HEC "Martanesh"	10.500	"Albanian Power" shpk	35kV	2,242	1,353	3,360	2,833	2,147	2,172	459	0	127	312	2,699	2,629	20,333
HEC "Verba 1,2"	5.000	"Hydro power Plant Of Korca" shpk	35kV	611	392	812	991	2,300	1,404	350	114	88	123	1,000	922	9,108
HEC "Fterra"	1.080	"HYDROBORSH" shpk	35kV	843	700	1,009	870	793	679	562	520	420	365	558	667	7,987
HEC "Ostren i Vogel"	0.320	"Lu & Co Eco Energy 2011" shpk	10kV	91	85	107	108	111	93	81	64	54	51	66	114	1,023
HEC "Kozel"	0.500	"E.T.H.H." shpk	10kV	101	48	72	133	157	134	0	0	0	0	74	121	841
HEC "Helmes 1"	0.800		10kV	209	118	253	352	341	213	16	0	0	0	262	319	2,082
HEC "Helmes 2"	0.500		10kV	103	71	132	157	186	160	18	0	0	0	156	207	1,189
HEC "Qafezeze"	0.400	"Caushi -Energji" shpk	10kV	396	282	459	420	422	400	67	32	56	46	422	506	3,506
HEC "Trebisht"	1.775	"SA-GLE Kompani" shpk	10kV	654	321	712	753	593	243	0	0	0	0	728	237	4,241
HEC "Mollaj"	0.600	"Energji Xhaci" shpk	10kV	0	0	76	59	161	163	0	0	68	0	100	174	802
HEC "Tucep"	0.400	"Tucep" shpk	10kV	272	268	299	296	300	270	255	215	218	228	257	301	3,178
HEC "Treska4"	3.600	"Hec-Treska" shpk	35kV	1,298	911	1,358	1,035	1,025	975	440	296	216	223	979	1,086	9,844
HEC "Treska3"	0.400		35kV	206	134	216	158	161	154	65	44	34	31	141	157	1,502
HEC "Treska 2T"	0.620		35kV	450	234	343	258	256	223	101	65	48	54	237	302	2,569
HEC "Sotire 1 & 2"	2.200	"Hydro Energy Sotira" shpk	35kV	714	312	606	507	634	913	505	95	7	6	443	592	5,335
HEC "Shutine"	2.400	"Shutine energji" shpk	10kV	427	239	584	549	261	113	0	0	0	139	716	542	3,570
HEC "Cekrez 1,2"	0.660	"Zall Herr Energji 2011" shpk	6kV	289	273	307	298	200	406	398	392	367	395	380	393	4,097
HEC "Qarr"	1.000	"Hec Qarr & Kaltanj" shpk	35kV	764	373	585	327	282	386	131	142	172	134	639	726	4,661
HEC "Bisak"	1.300	"Bardhgjana" shpk	6kV	645	436	595	423	333	209	149	0	0	0	523	861	4,175
HEC "Shales"	1.080	"Cista Konstruksion Energji" shpk	35kV	0	0	316	323	245	161	66	3	0	1	104	0	1,219

HEC"Strelce"	1.174	Gjona konstruksion -energj shpk	35kV	405	367	916	802	557	727	98	3	0	13	315	333	4,537
HEC "Shpelle "	0.400	"Sarolli" sh.p.k	10kV	117	75	179	214	111	127	44	6	13	13	113	174	1,187
HEC "Bicaj"	3.100	"En.Ku" sh.p.k	10kV	0	0	0	0	0	0	0	0	0	0	0	0	-
HEC "Leskovik 1"	1.072	"Maksi Elektrik" sh.p.k	10kV	41	43	49	46	42	39	24	0	0	0	30	40	354
HEC "Leskovik 2"	1.100		10kV	51	55	62	59	63	59	35	0	0	0	2	43	429
HEC "Orenjë"	0.875	"Juana" sh.p.k	10kV	250	201	191	193	163	109	0	0	0	0	124	206	1,437
HEC "Tamarë"	0.750	"WTS Energji" shpk	10kV	0	0	0	0	0	0	0	0	0	0	0	0	-
HEC "Benë"	1.000	"Marjakaj" shpk	6kV	163	124	162	163	155	50	0	0	0	11	164	156	1,149
HEC "Vithkuq" 2		"Favina 1" shpk		1,585	879	1,594	1,408	1,257	1,226	306	166	167	101	1,242	1,306	11,237
HEC "Vithkuq"1	2.715	"Favina 1" shpk	35/10kV	0	0	0	0	0	0	0	0	0	0	0	0	-
HEC "Selca"	1.600	"Selca Energji" shpk	10kV	615	506	575	788	1,149	882	270	218	104	329	950	1,224	7,611
HEC" Kumbull- Merkurth"	0.830	"DN & NAT Energy"shpk	6kV	171	54	230	207	346	100	0	0	0	42	379	277	1,806
HEC "Sasaj"	8.600	"Energo – Sas" shpk	35kV	2,757	2,333	3,041	2,471	2,355	1,711	924	920	767	925	2,215	2,357	22,775
HEC "Tervol"	10.600	"Hec i Tervolit" shpk	35kV	3,704	1,461	4,999	4,757	3,025	2,556	1,017	507	250	654	5,068	5,057	33,056
HEC "Radove"	2.500	"M.T.C. Energy" shpk	10kV	1,213	1,053	1,184	737	765	918	335	183	170	223	902	921	8,602
HEC" Gurshpat 1"	0.840	"Gurshpat Energy" shpk	10kV	721	511	496	653	491	341	176	70	30	100	524	748	4,857
HEC" Gurshpat 2"	0.830		10kV	817	563	617	575	542	375	144	63	54	138	360	850	5,100
HEC" Bistrica 3"	1.570	"Bistrica 3 Energy" shpk	6kv	477	42	0	13	605	658	559	418	564	565	555	814	5,272
HEC" Hurdhas 1"	1.710	Hydropowerplant Construction shpk	6kV	2,102	1,064	1,732	1,692	1,326	667	605	57	0	102	2,552	2,417	14,315
HEC" Perrollaj"	0.500	"Fatum" shpk	10kV	145	39	86	137	68	0	0	0	0	0	116	189	780
HEC" Koxheraj"	0.620	"Koxherri Energji" shpk	10kv	206	136	260	210	171	182	80	34	35	64	144	233	1,755
HEC" Kacni"	3.870	"Kisi-Bio-Energji" shpk	20kV	483	78	927	628	927	470	35	140	10	32	650	1,442	5,821
HEC" Lena 1"	1.950	"Gama Energy" shpk	35kv													
HEC" Lena 2"	2.300		35kv	950	444	1,354	1,284	868	849	99	0	27	28	1,212	847	7,962
HEC" Lena 2A "	0.250		35kv													
HEC "Driza"	3.408	"Mesopotam Energy" shpk	35kv	449	304	363	281	234	159	113	70	8	0	170	259	2,410
HEC Strelca 1,2,3	5.349	"Strelca Energy" shpk	35kv	786	697	1,537	1,749	2,563	1,758	529	261	150	252	1,307	1,449	13,038
HEC "Ujanik 2"	2.500	"HP Ujaniku Energy" shpk	35kv	815	431	904	526	414	554	61	0	0	34	755	628	5,122
HEC "Nishove"	1.360	"Nishova Energy" shpk	35kv	70	64	59	62	60	10	0	0	0	0	0	63	387
HEC "Shtika"	1.300	"Perparimi SK" shpk	10kv	476	391	397	255	159	93	0	0	0	1	135	250	2,157
HEC "Ballenje"	1.900	"Ballenja Power Martanesh" shpk	35kv	483	187	646	606	409	489	70	0	0	0	771	459	4,121
HEC "Gavran 1"	0.998	"Gavran Energy" shpk	35kv	444	171	431	413	283	200	58	0	0	13	332	471	2,816
HEC "Gavran 2"	1.215	"Gavran Energy" shpk	35kV	318	127	316	351	246	154	105	22	0	3	255	340	2,236
HEC "Kasollet e Selces 1"	4.000	"Xhengo Energji" shpk	35kV	851	543	1,327	1,044	1,409	1,018	389	238	187	215	836	904	8,958

GREEN ENERGY BILISHTI	2	GREEN ENERGY BILISHTI SHPK 35 kv	36 kv	0	0	-	0	567	467	589	537	432	391	258	201	3,442
Total				2,883	4,314	4,520	5,340	6,249	6,449	7,854	7,276	5,706	5,085	3,400	2,913	61,989
EZ-5 Solar Park	10	EZ-5 Solar Park	35 kv	364	564	698	970	965	1,046	1,223	1,021	757	584	425	434	9,051
EZ-5 Solar Park		EZ-5 Solar Park	35 kv	362	567	706	839	993	1,060	1,257	1,109	770	612	372	307	8,953
FV ALBSOLAR	2	"ALBSOLAR" SH.P.K.	35 kv	0	0	-	0	0	0	0	0	0	402	146	112	660
FV SUN ENERGY SOLUTIONS	2	"SUN ENERGY SOLUTIONS" SH.P.K.	35 kv	0	0	-	0	0	0	0	0	0	51	171	222	
Tot ne treg te lire				725	1,131	1,404	1,808	1,958	2,105	2,480	2,131	1,527	1,598	993	1,024	18,885

-48

3,609	5,445	5,924	7,149	8,207	8,554	10,334	9,407	7,233	6,682	4,393	3,937	80,874
												8,795,637

Kapaciteti Instaluar i gjithe prodhuesve	2,670 MW
--	-----------------

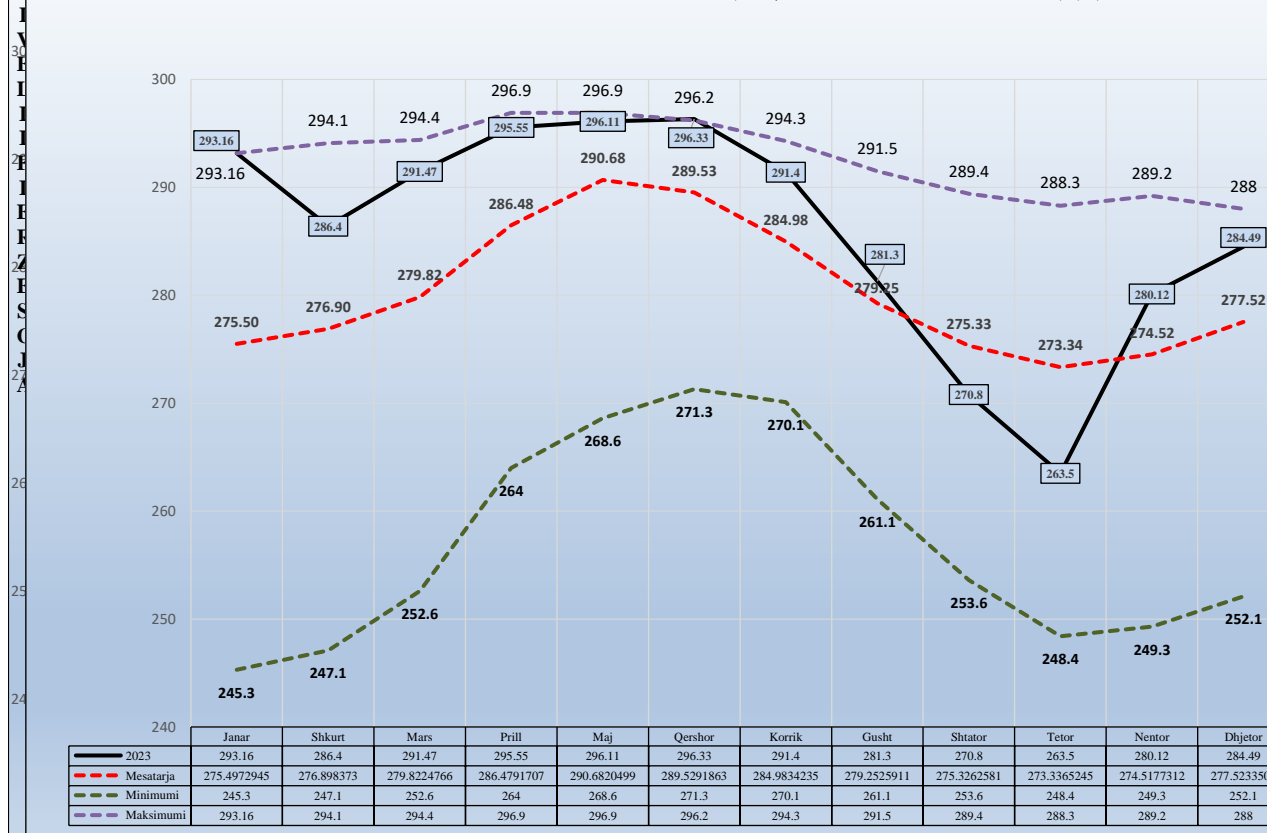
Burimi: OST sha; KESH sha; OSSH sha; FSHU sha; FTL sha; (OSHEE Group sha)

NIVELI I FIERZES 1991-2023

	Janar	Shkurt	Mars	Prill	Maj	Qershor	Korrik	Gusht	Shtator	Tetor	Nentor	Dhjetor
1991	254.4	260.8	268.6	279.9	293.4	296.1	294.0	291.5	289.4	288.3	288.8	285.1
1992	278.0	274.1	268.0	278.8	281.0	279.6	275.2	268.7	263.9	271.4	281.9	280.6
1993	275.2	265.3	264.7	278.5	280.5	277.3	271.0	261.1	253.6	249.9	255.6	270.2
1994	254.4	260.8	268.6	279.9	293.4	296.1	294.0	291.5	289.4	288.3	288.8	285.1
1995	253.8	260.3	262.5	275.3	289.0	288.7	284.5	282.2	288.2	283.8	279.9	287.5
1996	287.1	288.7	286.5	294.7	295.8	293.1	287.6	282.2	285.1	284.3	289.2	291.3
1997	289.4	284.5	281.7	285.2	294.1	292.0	287.0	280.0	272.9	272.4	270.8	277.2
1998	273.7	270.0	265.2	278.9	288.1	287.4	281.8	277.6	276.0	277.1	279.0	277.1
1999	272.7	275.6	281.5	290.5	295.9	293.3	288.3	279.5	271.0	257.6	263.6	276.9
2000	276.4	276.7	276.8	286.9	286.6	280.1	273.5	267.5	261.6	248.4	249.3	252.1
2001	253.6	258.2	275.1	282.9	287.6	283.8	273.7	271.1	269.2	263.6	263.2	252.1
2002	245.3	247.1	252.6	264.0	268.6	271.3	270.1	267.8	274.3	286.1	285.3	284.0
2003	291.1	289.5	286.3	287.0	292.3	290.3	285.9	280.8	276.0	282.6	285.6	283.3
2004	284.7	290.8	293.4	296.0	296.2	296.2	293.1	286.3	281.1	280.0	286.1	288.0
2005	281.2	281.5	293.3	296.1	295.6	294.1	286.7	277.2	266.5	256.9	253.6	279.0
2006	283.5	288.6	294.4	295.9	296.5	295.9	293.8	290.2	285.3	278.7	266.2	256.2
2007	256.1	263.7	272.0	276.8	276.8	274.8	268.5	263.6	261.8	261.1	275.8	282.1
2008	285.1	289.7	290.9	295.5	295.3	295.7	294.3	288.6	283.9	280.9	285.2	286.5
2009	283.6	281.8	283.4	292.5	293.7	292.4	288.0	281.2	276.2	271.6	266.3	280.1
2010	290.1	289.2	293.9	296.0	296.3	294.4	291.8	288.6	284.9	285.2	284.3	287.5
2011	281.6	274.1	275.0	276.6	281.0	286.1	284.7	279.0	273.9	268.2	261.6	264.5
2012	265.8	274.1	262.0	280.2	293.4	294.4	288.4	280.4	261.4	261.6	269.0	276.6
2013	278.3	274.1	294.8	296.9	296.9	294.2	289.7	283.6	280.8	281.4	282.5	276.1
2014	275.1	274.1	274.6	285.3	292.9	294.9	291.7	286.8	285.5	285.0	284.8	286.3
2015	288.7	274.1	292.2	296.3	296.1	293.3	287.5	280.1	272.1	275.4	278.9	275.9
2016	289.9	274.1	291.8	296.5	296.2	295.6	290.5	285.4	283.3	288.4	288.9	281.6
2017	271.5	274.1	280.9	278.7	281.6	272.4	270.2	268.0	271.0	264.6	269.6	289.9
2018	289.7	274.1	295.0	296.5	296.4	296.0	294.0	287.5	277.9	270.2	266.5	267.3
2019	267.3	274.1	272.7	279.9	289.9	292.7	287.6	278.5	274.2	268.6	273.2	275.6
2020	271.6	272.0	283.5	288.6	293.6	291.7	284.6	276.5	273.5	274.1	268.7	272.7
2021	291.7	294.1	292.6	294.3	296.7	291.7	282.7	274.3	271.3	267.7	267.8	275.1
2022	270.7	268.3	260.7	282.5	289.0	288.0	281.5	270.4	271.4	267.9	281.7	291.7
2023	293.2	286.4	291.5	295.6	296.1	296.3	291.4	281.3	270.8	263.5	280.1	284.5

	Janar	Shkurt	Mars	Prill	Maj	Qershor	Korrik	Gusht	Shtator	Tetor	Nentor	Dhjetor
2023	293.16	286.40	291.47	295.55	296.11	296.33	291.4	281.3	270.8	263.5	280.1	284.5
Mesatarja	275.50	276.90	279.82	286.48	290.68	289.53	284.98	279.25	275.33	273.34	274.52	277.52
Minimumi	245.3	247.1	252.6	264.0	268.6	271.3	270.1	261.1	253.6	248.4	249.3	252.1
Maksimumi	293.2	294.1	294.4	296.9	296.9	296.2	294.3	291.5	289.4	288.3	289.2	288.0

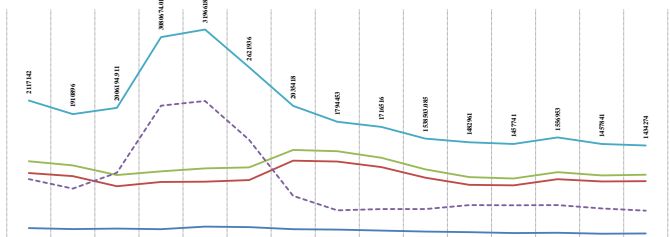
NIVELI I FIERZES GJATE 2023 KRAHESUAR ME (Min,Maks dhe Mesatren historike) (m)



HUMBJET NE RRJETIN E SHPERNDARJES 2009-2023(MWh)

	2009	2010	2011	2012	2013	2014	2015	2016	2017	2018	2019	2020	2021	2022	2023
HUMBJET TEKNIKE NE TL (NST)	175738	185246	176397	181831	207484	153288	162725	155429	141267	125974	117739	103729	107340	85331	76346
HUMBJET TEKNIKE NE ZONAT E ONSH	1492490	968215	814828	879416	884260	908416	1203793	1390897	944587	836261	828966	821330	886482	892334	892334
TOTALI HUMBJETE TEKNIKE ONSH	1674438	1153461	996225	1061247	1092744	1101704	1356518	1546261	1087854	962235	946105	930059	993822	977674	970680
HUMBJETE JETPORKNIKE ONSH	922814	778415	1028432	2409227	2418278	1258312	668899	447992	408302	407943	528041	528066	528281	477428	443274
TOTALI HUMBJETE ONSH	2177442	1931876	2064657	3080474	3311022	2360016	2014517	1794253	1496156	1370178	1474146	1458125	1471253	1454902	1413954

HUMBJET NE RRJETIN E SHPERNDARJES 2009-2023(MWh)



	2009	2010	2011	2012	2013	2014	2015	2016	2017	2018	2019	2020	2021	2022	2023
HUMBJETE TEKNIKE NE TL (NST)	175738	185246	176972109	181831	208483596	153288	162725	155429	141797	125973118	117739	103729	107340	85331	76346
HUMBJETE TEKNIKE NE ZONAT E ONSH	1492490	968215	814828104	879416	884260368	908416	1203793	1390897	944586501	836261	828966	821330	886482	892334	892334
TOTALI HUMBJETE TEKNIKE ONSH	1674438	1153461	1061247104	1061247	1092744368	1101704	1356518	1546261	1087854	962235116	946105	930059	993822	977674	970680
HUMBJETE JETPORKNIKE ONSH	922814	778415	1028432101	2409227	2418278105	1258312	668899	447992	408302	407943	528041	528066	528281	477428	443274
TOTALI HUMBJETE ONSH	2177442	1931876	2064657105	3080474	3311022110	2360016	2014517	1794253	1496156	1477741	1458125	1471253	1477861	1454902	1413954

Burimi: ONSH dhe / ONSH E Grupit dhe

Janar	73,370,006	6,508,770	16,409	5,696,013	5,712,421	6,492,362	796,349	0
Shkurt	73,517,039	6,106,516	4,215,767	1,743,716	5,959,484	1,890,749	147,033	0
Mars	73,916,688	5,129,481	4,299,341	430,490	4,729,831	830,140	399,650	0
Prill	73,467,701	5,029,219	5,202,266	275,941	5,478,206	173,047	448,988	0
Maj	73,234,253	4,885,187	4,856,458	262,176	5,118,635	28,729	233,447	0
Qershor	73,005,446	4,763,565	4,633,611	358,761	4,992,372	129,954	228,807	0
Korrik	73,865,820	5,588,061	4,444,694	282,993	4,727,687	1,143,367	866,374	0
Gusht	74,144,786	5,056,760	5,058,892	268,903	5,327,794	547,868	278,966	0
Shtator	74,000,809	5,327,559	5,096,602	374,935	5,471,536	230,957	143,977	0
Tetor	73,790,738	5,174,314	5,025,382	359,002	5,533,316	148,932	210,070	0
Nentor	74,671,974	5,615,129	4,483,130	250,764	4,733,894	1,132,000	881,235	0
Dhjetor	75,609,639	6,641,071	5,412,845	290,561	5,703,406	1,228,226	937,665	0
Total								

FATURIM-ARKETIMET DHE NDRYSHIMI I GJENDES DEBITORE GJTE VITIT 2021 (000/LEKE)

Viti 2021	Te arketeshme	Faturuar 2021	arketimi per faturat e 2021	Arketimi per faturat e 2007-2020	Arketimi total	Te Arketeshme per energjine e faturuar ne vitin 2021	Ndryshimi I gjendjes se Llogarive te arketeshme gjate vitit 2021	Shuarje Detyrimesh
	2	5	7	6=5-7	9=(2-5)			
Janar	75,609,639	2	5	7	6=5-7	9=(2-5)		
Janar	76,272,477	6,400,370	19,639	5,717,893	5,737,532	6,380,731	662,838	0
Shkurt	76,826,391	6,245,453	3,770,254	1,921,284	5,691,538	2,475,198	553,914	0
Mars	76,605,803	6,158,373	5,690,524	688,438	6,378,961	467,849	220,588	0
Prill	76,818,750	5,817,548	5,302,816	301,785	5,604,601	514,732	212,947	0
Maj	76,122,770	5,190,837	5,558,138	328,680	5,886,818	367,301	695,980	0
Qershor	75,924,651	5,548,298	5,417,458	328,959	5,746,417	130,840	198,119	0
Korrik	76,924,743	6,577,974	5,053,270	324,612	5,377,882	1,324,705	1,000,093	0
Gusht	77,478,064	6,554,952	5,648,400	353,231	6,001,630	906,552	553,321	0
Shtator	76,933,233	5,401,032	5,087,762	258,102	5,945,864	286,730	544,832	0
Tetor	76,284,525	5,544,032	5,239,826	452,913	6,192,739	195,794	648,707	0
Nentor	76,704,823	5,794,416	5,080,754	293,364	5,374,118	713,662	420,298	0
Dhjetor	78,394,397	7,572,744	5,583,186	299,984	5,883,170	1,989,557	1,689,574	0
Total								

FATURIM-ARKETIMET DHE NDRYSHIMI I GJENDES DEBITORE GJTE VITIT 2022 (000/LEKE)

Viti 2022	Te arketeshme	Faturuar 2022	arketimi per faturat e 2022	Arketimi per faturat e 2007-2022	Arketimi total	Te Arketeshme per energjine e faturuar ne vitin 2022	Ndryshimi I gjendjes se Llogarive te arketeshme gjate vitit 2022	Shuarje Detyrimesh
	2	5	7	6=5-7	9=(2-5)			
Janar	78,394,397	2	5	7	6=5-7	9=(2-5)		
Janar	79,437,476	7,902,272	4,793,436	2,065,757	6,859,193	3,108,836	1,043,079	0
Shkurt	80,288,829	7,515,728	4,609,541	2,094,835	6,664,376	2,946,187	851,353	0
Mars	80,426,273	7,857,071	6,691,413	1,028,214	7,719,627	1,165,658	137,444	0
Prill	79,617,380	6,186,945	6,531,117	464,721	6,995,838	344,172	808,893	0
Maj	79,499,359	6,188,303	5,969,488	336,836	6,306,324	218,815	118,021	0
Qershor	79,997,520	6,553,744	5,410,349	445,234	6,055,583	943,395	498,162	0
Korrik	80,005,681	6,553,744	6,230,846	314,737	6,545,583	322,898	8,161	0
Gusht	79,791,653	7,358,491	7,103,150	469,370	7,572,519	255,341	214,028	0
Shtator	78,554,734	6,162,925	7,005,112	394,733	7,399,844	842,187	1,236,919	0
Tetor	77,962,798	5,848,663	6,104,850	335,749	6,440,598	256,187	591,935	0
Nentor	78,481,014	6,502,315	798,011	5,186,087	5,984,099	5,704,303	518,216	0
Dhjetor	79,249,438	7,458,986	6,200,688	489,874	6,690,562	1,258,298	768,423	0
Total		82,089,187			81,234,146			

FATURIM-ARKETIMET DHE NDRYSHIMI I GJENDES DEBITORE GJTE VITIT 2023 (000/LEKE)

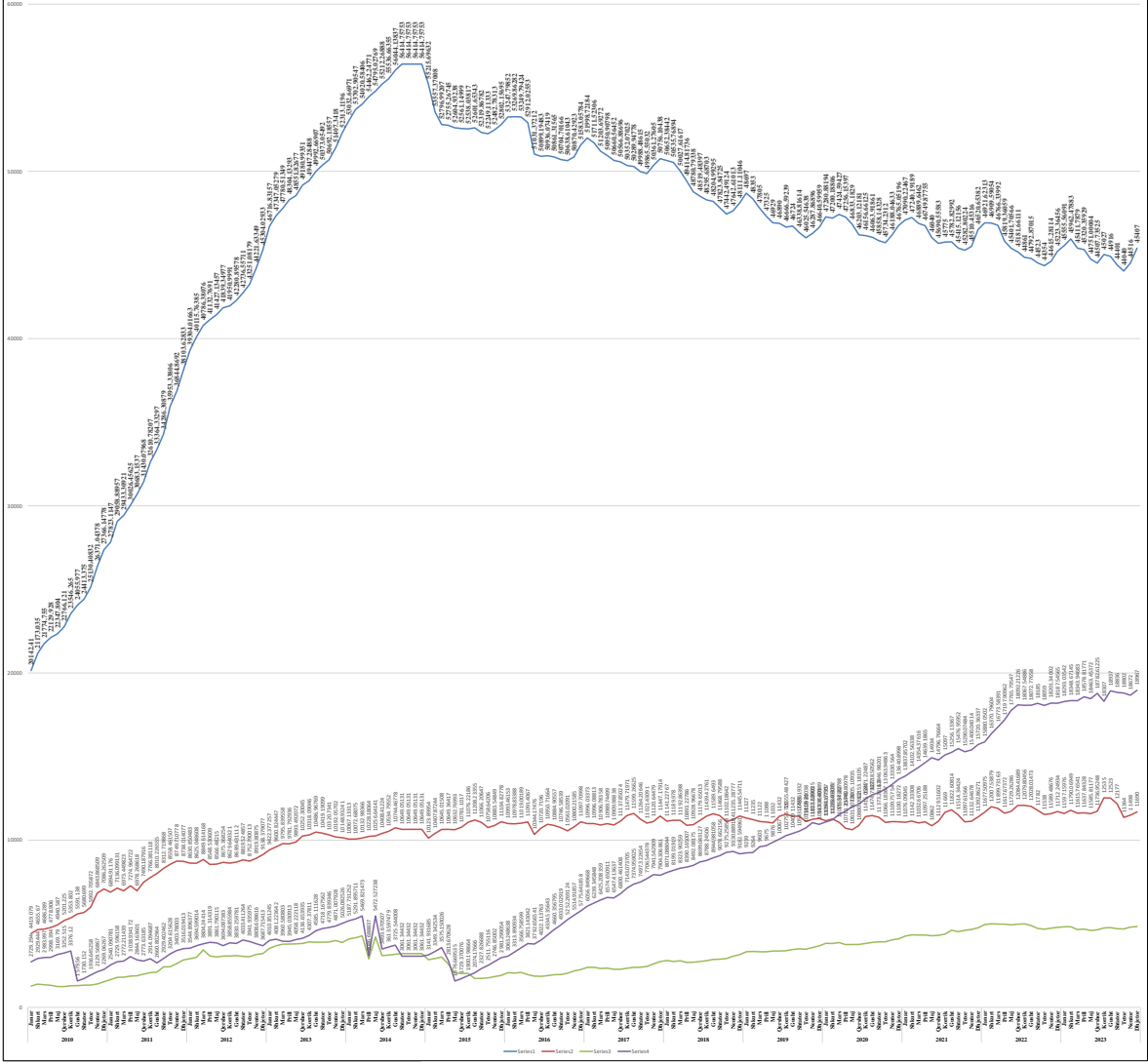
Viti 2023	Te arketeshme	Faturuar 2023	arketimi per faturat e 2023	Arketimi per faturat e 2007-2022	Arketimi total	Te Arketeshme per energjine e faturuar ne vitin 2023	Ndryshimi I gjendjes se Llogarive te arketeshme gjate vitit 2023	Shuarje Detyrimesh
	2	5	7	6=5-7	9=(2-5)			
Janar	79,910,252	2	5	7	6=5-7	9=(2-5)		
Janar	80,265,490	7,226,860	17,571	6,864,050	6,881,621	7,219,288	355,238	0
Shkurt	80,929,747	7,477,014	4,674,206	2,139,553	6,813,758	2,802,809	663,256	0
Mars	80,025,935	6,808,975	6,660,084	831,603	7,491,687	71,209	902,812	0
Prill	80,223,225	6,321,511	5,757,211	367,010	6,124,221	564,300	197,290	0
Maj	79,402,801	5,993,172	6,505,113	308,483	6,813,596	511,941	820,424	0
Qershor	79,665,073	6,074,125	5,550,743	261,110	5,811,853	523,382	262,272	0
Korrik	81,307,082	7,326,635	5,416,995	267,632	5,684,626	1,909,640	1,642,009	0
Gusht	81,148,340	7,281,460	6,976,104	464,097	7,440,201	305,356	158,741	0
Shtator	80,122,629	6,339,551	6,941,811	423,452	7,365,263	602,259	1,025,711	0
Tetor	78,896,288	5,987,458	6,799,334	414,465	7,213,799	5,572,992	1,226,341	0
Nentor	79,489,896	6,806,859	5,995,279	217,882	6,213,161	6,588,977	593,698	0
Dhjetor	80,898,725	7,990,009	6,461,676	119,594	6,581,270	7,870,415	1,408,739	0
Total		81,423,530			80,435,057			

Burimi : FSHU sha

ECURIA E GJENDJES DEBITORE NDAJ OPERATORIT TË SHPËRNDARJES SIPAS KATEGORIVE 2010-2023 (000 000 LËKË)

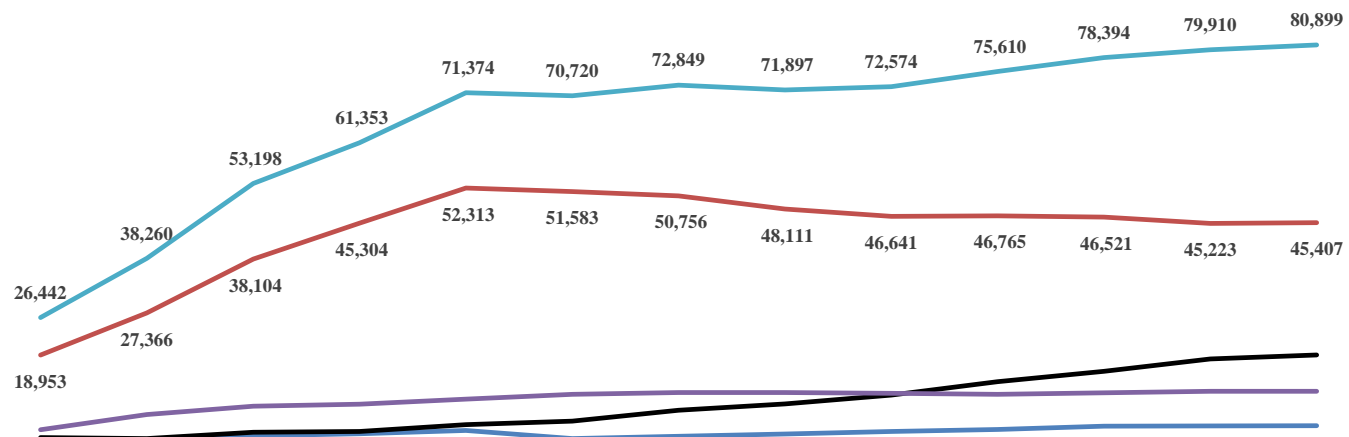
Vite	2010	2011	2012	2013	2014	2015	2016	2017	2018	2019	2020	2021	2022	2023
Shuma	141,411	171,279	211,212	251,145	301,078	351,011	400,944	450,877	500,810	550,743	600,676	650,609	700,542	750,475
Operatori	100,000	120,000	140,000	160,000	180,000	200,000	220,000	240,000	260,000	280,000	300,000	320,000	340,000	360,000
Shërbimet	20,000	25,000	30,000	35,000	40,000	45,000	50,000	55,000	60,000	65,000	70,000	75,000	80,000	85,000
Materiali	10,000	12,000	14,000	16,000	18,000	20,000	22,000	24,000	26,000	28,000	30,000	32,000	34,000	36,000
Investimet	10,000	12,000	14,000	16,000	18,000	20,000	22,000	24,000	26,000	28,000	30,000	32,000	34,000	36,000
Financimi	11,411	14,279	17,212	20,145	23,078	26,011	28,944	31,877	34,810	37,743	40,676	43,609	46,542	49,475

ECURIA E GJENDJES DEBITORE NDAJ OPERATORIT TË SHPËRNDARJES SIPAS KATEGORIVE 2010-2023 (000 000 LËKË)



	31.12.2009	31.12.2010	31.12.2011	31.12.2012	31.12.2013	31.12.2016	31.12.2017	31.12.2018	31.12.2019	31.12.2020	31.12.2021	31.12.2022	31.12.2023
Buxhetore	988	1,538	2,841	3,223	3,886	2,264	2,741	3,157	3,681	4,104	4,761	4,787	4,835
Familjare	18,953	27,366	38,104	45,304	52,313	51,583	50,756	48,111	46,641	46,765	46,521	45,223	45,407
JoBuxhetore	2,468	2,269	3,516	3,688	5,026	5,776	7,904	9,183	10,947	13,641	15,720	18,188	18,967
Privat	4,033	7,086	8,738	9,138	10,149	11,098	11,447	11,446	11,304	11,100	11,393	11,712	11,690
Total	26,442	38,260	53,198	61,353	71,374	70,720	72,849	71,897	72,574	75,610	78,394	79,910	80,899

**ECURIA E GJENDJES DEBITORE NDAJ OPERATORIT TE SHPERNDARJES
31 DHJETOR 2009 - 31 DHJETOR 2023 SIPAS KLIENTËVE
(000 000 LEKË)**

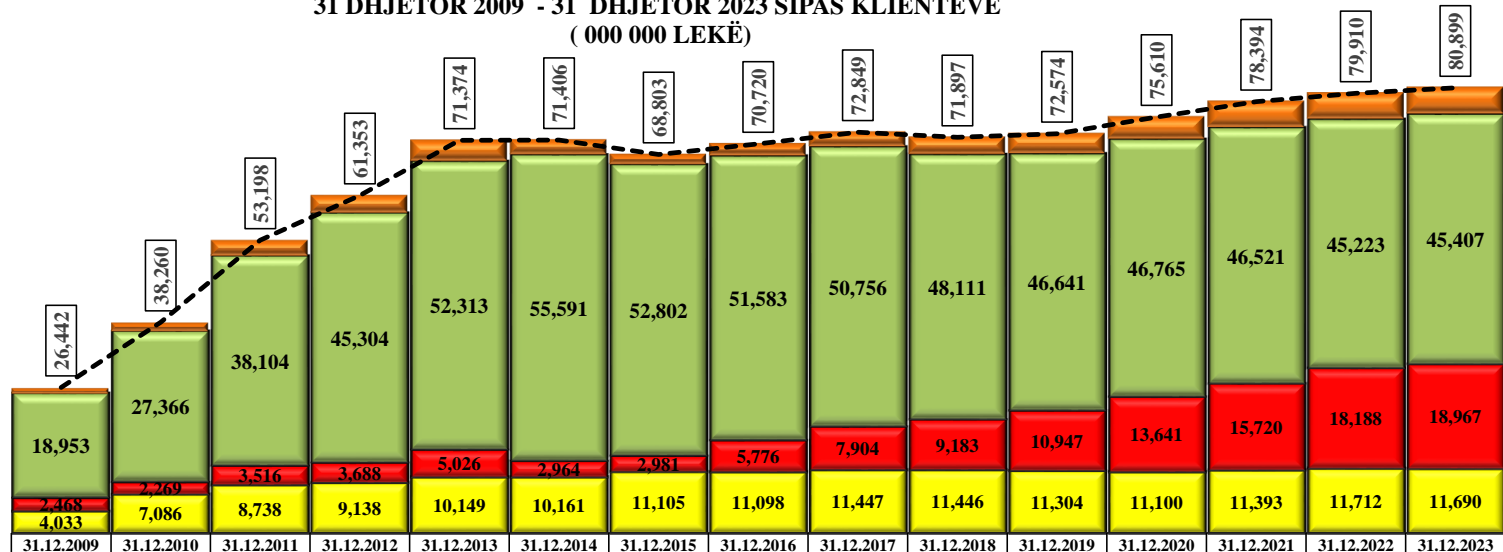


	31.12.2009	31.12.2010	31.12.2011	31.12.2012	31.12.2013	31.12.2016	31.12.2017	31.12.2018	31.12.2019	31.12.2020	31.12.2021	31.12.2022	31.12.2023
Buxhetore	988	1,538	2,841	3,223	3,886	2,264	2,741	3,157	3,681	4,104	4,761	4,787	4,835
Familjare	18,953	27,366	38,104	45,304	52,313	51,583	50,756	48,111	46,641	46,765	46,521	45,223	45,407
JoBuxhetore	2,468	2,269	3,516	3,688	5,026	5,776	7,904	9,183	10,947	13,641	15,720	18,188	18,967
Privat	4,033	7,086	8,738	9,138	10,149	11,098	11,447	11,446	11,304	11,100	11,393	11,712	11,690
Total	26,442	38,260	53,198	61,353	71,374	70,720	72,849	71,897	72,574	75,610	78,394	79,910	80,899

Buxhetor	4,835
Familjar	45,407
Jo Buxhetor	18,967
Privat	11,690

	31.12.2009	31.12.2010	31.12.2011	31.12.2012	31.12.2013	31.12.2014	31.12.2015	31.12.2016	31.12.2017	31.12.2018	31.12.2019	31.12.2020	31.12.2021	31.12.2022	31.12.2023
Privat	4,033	7,086	8,738	9,138	10,149	10,161	11,105	11,098	11,447	11,446	11,304	11,100	11,393	11,712	11,690
JoBuxhetore	2,468	2,269	3,516	3,688	5,026	2,964	2,981	5,776	7,904	9,183	10,947	13,641	15,720	18,188	18,967
Familjare	18,953	27,366	38,104	45,304	52,313	55,591	52,802	51,583	50,756	48,111	46,641	46,765	46,521	45,223	45,407
Buxhetore	988	1,538	2,841	3,223	3,886	2,691	1,915	2,264	2,741	3,157	3,681	4,104	4,761	4,787	4,835
Total	26,442	38,260	53,198	61,353	71,374	71,406	68,803	70,720	72,849	71,897	72,574	75,610	78,394	79,910	80,899

**ECURIA E GJENDJES DEBITORE NDAJ OPERATORIT TE SHPERNDARJES
31 DHJETOR 2009 - 31 DHJETOR 2023 SIPAS KLIENTËVE
(000 000 LEKË)**

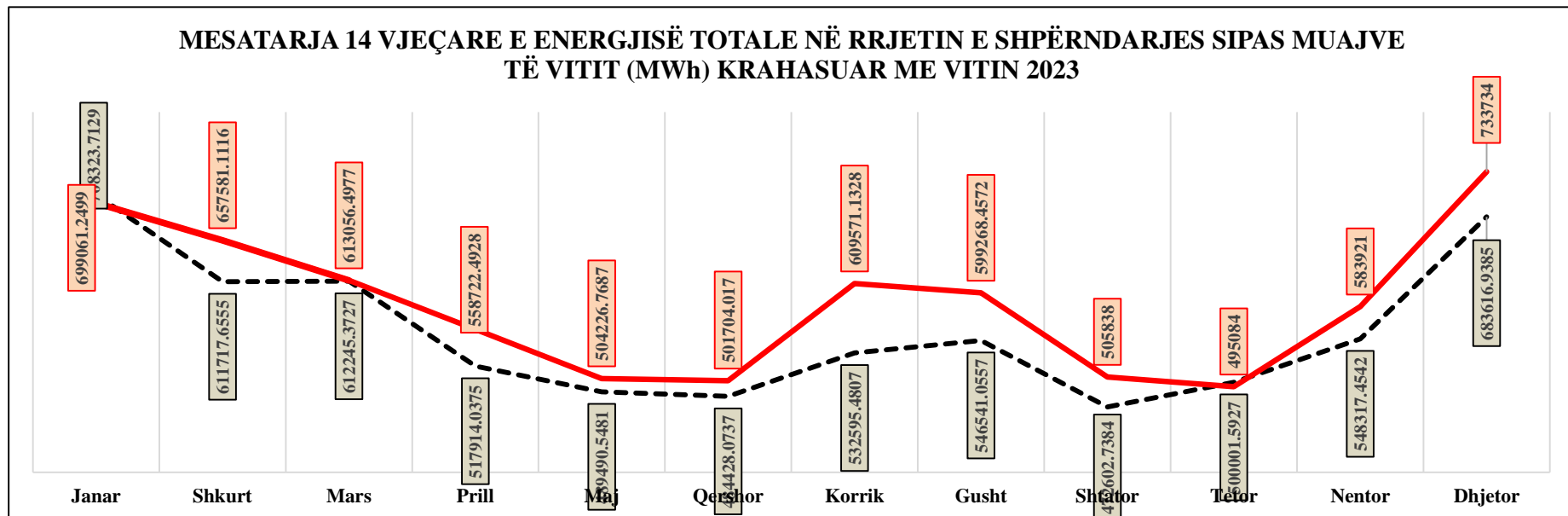


Buxhetore	988	1,538	2,841	3,223	3,886	2,691	1,915	2,264	2,741	3,157	3,681	4,104	4,761	4,787	4,835
Familjare	18,953	27,366	38,104	45,304	52,313	55,591	52,802	51,583	50,756	48,111	46,641	46,765	46,521	45,223	45,407
JoBuxhetore	2,468	2,269	3,516	3,688	5,026	2,964	2,981	5,776	7,904	9,183	10,947	13,641	15,720	18,188	18,967
Privat	4,033	7,086	8,738	9,138	10,149	10,161	11,105	11,098	11,447	11,446	11,304	11,100	11,393	11,712	11,690
Total	26,442	38,260	53,198	61,353	71,374	71,406	68,803	70,720	72,849	71,897	72,574	75,610	78,394	79,910	80,899

Burimi: FSHU sha / (OSHEE Group sha)

	Janar	Shkurt	Mars	Prill	Maj	Qershor	Korrik	Gusht	Shtator	Tetor	Nentor	Dhjetor	VITI
2009	644,987	568,719	589,279	462,709	448,118	427,694	467,863	493,772	439,604	489,635	557,554	639,797	6,229,731
2010	675,343	608,940	610,583	506,275	476,500	464,120	499,241	512,024	460,893	509,793	532,126	660,665	6,516,503
2011	708,264	623,208	634,087	536,286	533,564	495,139	545,315	567,282	512,979	551,132	619,655	710,870	7,037,781
2012	733,973	680,054	596,982	537,950	483,891	489,723	536,891	540,566	469,527	484,706	548,289	749,398	6,851,949
2013	743,846	665,392	673,578	545,600	502,945	511,390	546,696	565,789	493,056	532,555	589,808	774,403	7,145,060
2014	733,468	631,678	645,837	578,948	541,016	501,088	530,554	556,098	492,427	537,280	546,419	640,431	6,935,244
2015	686,041	591,978	594,775	514,282	472,405	465,730	536,160	529,208	459,012	476,969	519,281	649,026	6,494,867
2016	671,884	559,772	573,419	469,803	477,468	463,248	509,916	514,034	451,153	480,236	540,024	688,760	6,399,717
2017	715,886	562,270	545,214	493,731	475,055	485,386	529,805	543,145	451,103	482,629	546,256	667,841	6,498,322
2018	659,778	590,823	597,595	468,417	467,468	468,885	508,892	539,134	465,468	471,407	517,882	681,162	6,436,911
2019	735,813	586,992	559,331	500,485	501,061	500,729	533,842	565,788	471,684	472,833	507,920	639,953	6,576,432
2020	708,611	607,803	589,581	489,236	464,183	463,789	527,801	533,336	482,358	506,280	562,127	669,977	6,605,082
2021	724,554	629,962	662,183	590,810	504,970	519,563	591,485	603,872	485,288	523,606	552,840	747,790	7,136,936
2022	774,084	656,456	698,991	556,264	504,224	525,509	591,875	587,527	481,886	480,961	536,263	650,564	7,044,604
2023	699,061	657,581	613,056	558,722	504,227	501,704	609,571	599,268	505,838	495,084	583,921	733,734	7,061,769

	Janar	Shkurt	Mars	Prill	Maj	Qershor	Korrik	Gusht	Shtator	Tetor	Nentor	Dhjetor
Mesatarja	708,324	611,718	612,245	517,914	489,491	484,428	532,595	546,541	472,603	500,002	548,317	683,617
2023	699,061	657,581	613,056	558,722	504,227	501,704	609,571	599,268	505,838	495,084	583,921	733,734



Burimi: OSHEE Group sha

NIVELI I HUMBJEVE (%) 2009-2023												
	Janar	Shkurt	Mars	Prill	Maj	Qershor	Korrik	Gusht	Shtator	Tetor	Nentor	Dhjetor
2009	40.75	37.05	38.05	32.93	33.44	30.75	32.60	30.20	25.34	30.67	33.44	36.89
2010	38.62	35.41	36.90	31.37	35.17	31.45	26.94	29.69	21.47	20.61	22.16	29.05
2011	55.55	38.00	36.95	23.11	24.85	21.29	21.88	19.41	22.95	25.15	32.20	35.70
2012	35.72	59.16	55.23	45.41	38.87	39.77	45.51	45.51	42.09	35.53	41.89	49.32
2013	51.12	48.71	48.29	39.66	39.52	40.33	43.33	38.50	35.08	45.98	48.08	53.04
2014	47.00	42.14	42.78	35.69	36.85	34.10	36.59	36.36	31.67	34.52	32.88	37.54
2015	36.68	31.82	32.88	30.54	31.24	28.60	30.62	29.29	25.30	29.92	30.82	34.50
2016	34.69	29.00	29.93	26.07	26.97	24.35	25.97	25.15	22.12	27.11	29.30	30.99
2017	33.50	27.63	28.66	25.81	25.88	28.31	24.69	23.29	19.79	23.76	23.55	27.90
2018	30.65	24.91	27.22	23.33	23.03	20.76	21.46	20.77	19.32	21.53	22.73	26.70
2019	29.25	23.21	26.5	21.36	22.10	19.92	20.42	19.81	17.54	20.40	21.58	24.76
2020	28.22	21.61	28.36	17.39	19.10	18.65	19.69	18.87	16.80	21.21	22.79	20.49
2021	27.87	20.1	25.92	21.08	17.92	18.34	18.75	17.93	16.22	18.56	19.88	20.25
2022	28.42	19.66	23.68	18.24	17.08	17.30	18.42	16.81	14.94	18.36	18.38	19.76
2023	25.79	19.06	21.05	18.65	16.68	16.04	17.48	16.17	14.80	17.62	18.20	21.52

Niveli i Arketimeve (%) 2009-2023												
	Janar	Shkurt	Mars	Prill	Maj	Qershor	Korrik	Gusht	Shtator	Tetor	Nentor	Dhjetor
2009	69.32	85.95	74.38	86.58	86.31	76.37	75.40	72.46	83.20	80.82	61.77	70.01
2010	55.37	66.28	86.63	89.46	86.70	79.42	74.84	124.98	84.20	70.81	56.15	66.48
2011	67.26	57.61	87.66	71.61	96.73	73.00	65.00	81.00	66.00	63.86	51.47	87.30
2012	59.80	79.20	78.50	78.00	94.70	83.50	91.60	102.90	74.00	98.00	72.60	78.00
2013	61.40	63.70	86.20	80.70	79.10	69.60	87.90	90.10	78.50	84.30	89.00	102.00
2014	84.90	77.10	85.90	85.50	81.90	80.20	86.70	83.60	102.60	101.00	101.90	141.00
2015	112.70	120.50	103.70	86.60	95.70	97.10	98.40	104.70	95.30	100.30	92.20	100.70
2016	92.10	87.00	95.60	90.10	99.10	92.00	94.20	96.70	91.50	96.70	90.30	96.70
2017	85.20	87.60	105.70	94.50	105.70	91.80	104.80	97.40	94.60	103.80	92.70	100.10
2018	96.39	95.69	105.82	98.92	111.64	100.16	105.00	102.12	93.03	108.76	96.24	108.94
2019	90.7	92.6	99.8	102.4	102.50	94.00	104.40	99.30	93.90	104.70	89.60	110.70
2020	91.4	91.6	77.5	106.8	101.80	102.20	96.80	95.30	96.60	101.10	91.50	101.80
2021	86.4	88.9	102.1	91	101.20	110.70	96.90	94.10	90.70	114.70	96.90	101.50
2022	90.6	84.3	102.7	90.5	98.00	97.90	99.90	105.00	100.60	104.50	102.30	102.90
2023	92.3	94.2	100.2	92.9	113.7	95.70	93.60	101.60	101.20	113.80	103.80	96.70

Efektiviteti i shitjeve (%) 2009-2022												
	Janar	Shkurt	Mars	Prill	Maj	Qershor	Korrik	Gusht	Shtator	Tetor	Nentor	Dhjetor
2009	41.1%	46.8%	53.6%	57.9%	50.8%	52.2%	48.8%	50.6%	62.1%	56.0%	41.1%	44.2%
2010	34.0%	56.0%	56.4%	59.5%	51.5%	51.3%	91.3%	87.9%	66.1%	56.2%	43.7%	47.2%
2011	29.9%	54.3%	45.2%	74.4%	54.9%	51.2%	63.3%	65.3%	50.9%	47.8%	34.9%	56.1%
2012	38.4%	32.1%	34.9%	51.7%	51.0%	55.2%	56.1%	56.1%	42.9%	63.2%	42.2%	39.5%
2013	30.0%	44.2%	41.7%	47.7%	42.1%	52.4%	51.1%	55.4%	51.0%	45.5%	46.2%	47.9%
2014	45.0%	49.7%	48.9%	52.7%	50.6%	57.1%	53.0%	53.2%	70.1%	66.1%	68.4%	88.1%
2015	71.4%	69.6%	60.2%	65.8%	69.3%	68.3%	72.6%	74.0%	71.2%	70.3%	63.8%	66.0%
2016	60.2%	67.0%	66.6%	72.4%	69.6%	69.7%	71.6%	72.4%	71.3%	70.5%	63.8%	66.7%
2017	56.7%	75.4%	70.1%	78.3%	65.8%	78.9%	73.4%	74.7%	75.9%	79.1%	70.9%	72.2%
2018	66.8%	77.0%	75.8%	85.9%	79.4%	82.5%	80.2%	80.9%	75.1%	85.3%	74.4%	79.9%
2019	64.2%	73.4%	80.5%	79.8%	75.3%	83.1%	79.0%	79.6%	77.4%	83.3%	70.3%	83.3%
2020	65.6%	55.5%	88.2%	82.4%	83.1%	77.7%	76.5%	77.3%	80.4%	79.7%	70.6%	80.9%
2021	62.3%	75.6%	71.8%	83.1%	90.4%	78.7%	76.5%	77.2%	76.0%	93.4%	77.6%	80.9%
2022	64.9%	78.4%	74.0%	81.3%	81.0%	81.5%	85.7%	87.3%	85.6%	85.3%	83.5%	82.6%
2023	68.5%	76.2%	79.1%	75.6%	94.7%	80.3%	77.2%	85.2%	86.2%	93.7%	84.9%	75.9%

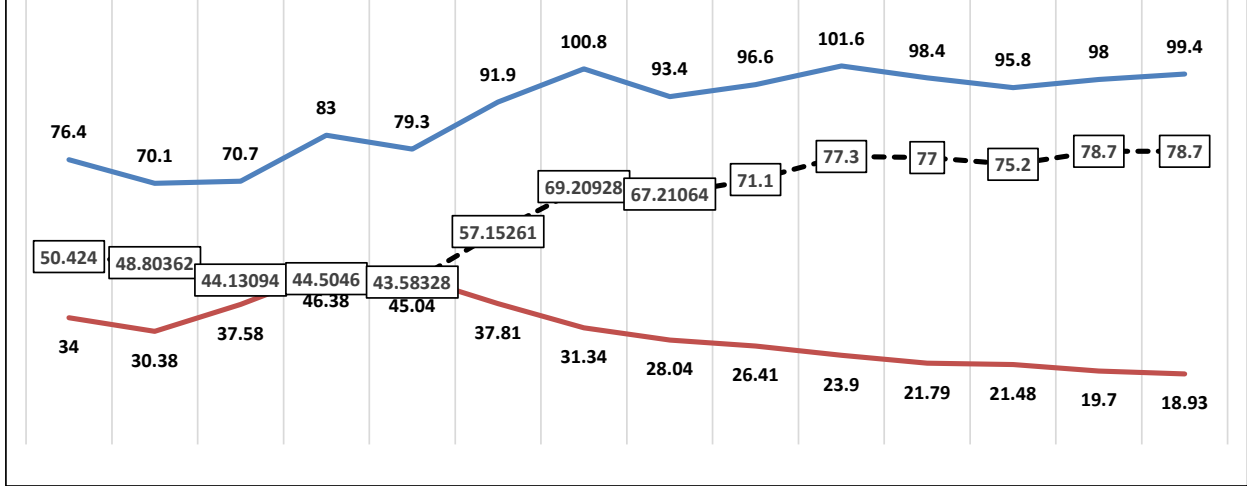
2009	2010	2011	2012	2013	2014	2015	2016	2017	2018	2019	2020	2022	2023
------	------	------	------	------	------	------	------	------	------	------	------	------	------

Arketimi	76.4	70.1	70.7	83.0	79.3	91.9	100.8	93.4	96.6	101.6	98.4	95.8	98.0	99.4
Humbja	34.0	30.4	37.6	46.4	45.0	37.8	31.3	28.0	26.4	23.9	21.8	21.5	19.7	18.9
Efektiviteti	50.4	48.8	44.1	44.5	43.6	57.2	69.2	67.2	71.1	77.3	77.0	75.2	78.7	78.7

Efektiviteti i shitjeve ne Sistemin e Shperndarjes (%)

2009-2023

Arketimi Humbja



Burimi FSHU (OSHEE Group sha)

Alokimi i Kapaciteteve në interkoniksion 2023

Ankandi	Periudha	Shqiperi - Mali Zi						Shqiperi - Greqi						Shqiperi - Kosove																	
		ATC e ofruar ne Ankand		ATC e shitur ne Ankand		Cmimi Ankandit		ATC e ofruar ne Ankand		ATC e shitur ne Ankand		Cmimi Ankandit		ATC e ofruar ne Ankand		ATC e shitur ne Ankand		Cmimi Ankandit													
		Export	Import	Export	Import	Export	Import	Export	Import	Export	Import	Export	Import	Export	Import	Export	Import	Export	Import												
		[MW]	[MW]	[MW]	[MW]	[Euro/MWh]	[Euro/MWh]	[MW]	[MW]	[MW]	[MW]	[Euro/MWh]	[Euro/MWh]	[MW]	[MW]	[MW]	[MW]	[Euro/MWh]	[Euro/MWh]												
Janar	01.01.2023-31.01.2023	150	100	150	100	3.14	1.62	200	150	200	150	3.05	3.55	200	200	200	200	1.28	0.92												
Shkurt	01.02.2023-28.02.2023	100	100	100	100	4.5	3.58	200	100	200	100	10.33	3.5	200	200	200	200	2.1	1.21												
Mars	01.03.2023-05.03.2023	100	100	100	100	2.77	2.21	200	200	200	200	8.22	0.63	200	200	200	200	1.44	0.88												
	06.03.2023-10.03.2023	50	50	50	50	4.44	3.88	100	100	98	97	8.22	0.63																		
	11.03.2023-31.03.2023	100	100	100	100	2.77	2.21	200	200	200	200	8.22	0.63																		
Prill	01.04.2023-02.04.2023	100	100	100	100	2.91	1.2	200	200	200	200	6.98	1.24	200	200	200	200	1.21	0.91												
	02.04.2023-03.04.2023							50	50	48	47	1.21	0.91																		
	03.04.2023-04.04.2023																														
	04.04.2023-04.04.2023																														
	05.04.2023-11.04.2023																														
	12.04.2023-17.04.2023																														
	18.04.2023-18.04.2023																			50	50	49	49	2.91	1.2	50	200	45	200	6.98	1.24
	19.04.2023-19.04.2023																			200	200	200	200	6.98							
	20.04.2023-28.04.2023																			100	100	100	100	2.91	1.2	50	200	45	200	6.98	1.24
29.04.2023-30.04.2023	50	50	49	49	2.91	1.2	50	200	45	200	6.98																				
Maj	01.05.2023-01.05.2023	100	100	100	100	1.55	0.9	50	200	46	200	7.50	0.58	200	200	200	199	0.14	0.08												
	02.05.2023-06.05.2023							0	0	0	0																				
	07.05.2023-21.05.2023							50	200	46	200																				
	22.05.2023-31.05.2023							200	200	200	200																				
Qershor	01.06.2023-30.06.2023	100	100	100	100	2.31	1.75	200	200	200	200	10.00	0.66	200	200	200	200	0.88	0.64												
Korrik	01.07.2023-31.07.2023	100	100	100	100	0.88	1.5	200	200	200	200	5.77	0.6	200	200	200	200	0.24	0.55												
Gusht	01.08.2023-22.08.2023	100	100	100	99	0.66	1.5	200	200	200	200	4.7	0.88	200	200	200	200	0.19	0.98												
	23.08.2023-24.08.2023													50	50	47	46	0.19	0.98												
	25.08.2023-31.08.2023													200	200	200	200	0.19	0.98												
Shtator	01.09.2023-25.09.2023	100	100	100	99	0.81	2.33	200	200	200	200	3.5	0.69	200	200	200	200	0.26	1.47												
	26.09.2023-30.09.2023							150	150	143	146	3.5	0.69																		
Tetor	01.10.2023-08.10.2023	100	100	100	100	1.5	2.17	200	200	200	199	3.5	0.9	200	200	200	200	0.33	0.91												
	09.10.2023-20.10.2023							100		99		3.5																			
	21.10.2023-31.10.2023							200		200		3.5																			
Nëntor	01.11.2023-30.11.2023	100	100	100	100	1.46	1.5	200	2	200	2	2.33	8.88	200	200	200	200	0.51	1.11												
Dhjetor	01.12.2022-31.12.2022	100	100	100	100	2.31	1.7	200	50	200	50	6.54	1.01	200	200	200	200	0.91	1.51												

Burimi: OST sha

Disbalancat mujore [MWh] 2023 (12-MUJORI)

Pala Përgjegjëse Balancuese	JANAR		SHKURT		MARS		PRILL		MAJ		QERSHOR		KORRIK		GUSHT		SHTATOR		TETOR		NETOR		DHJETOR		TOTALI 2023							
	D.L. Negativë [MWh]	D.L. Pozitivë [MWh]	D.L. Negativë [MWh]	D.L. Pozitivë [MWh]	D.L. Negativë [MWh]	D.L. Pozitivë [MWh]	D.L. Negativë [MWh]	D.L. Pozitivë [MWh]	D.L. Negativë [MWh]	D.L. Pozitivë [MWh]	D.L. Negativë [MWh]	D.L. Pozitivë [MWh]	D.L. Negativë [MWh]	D.L. Pozitivë [MWh]	D.L. Negativë [MWh]	D.L. Pozitivë [MWh]	D.L. Negativë [MWh]	D.L. Pozitivë [MWh]	D.L. Negativë [MWh]	D.L. Pozitivë [MWh]	D.L. Negativë [MWh]	D.L. Pozitivë [MWh]	D.L. Negativë [MWh]	D.L. Pozitivë [MWh]	D.L. Negativë [MWh]	D.L. Pozitivë [MWh]	D.L. Negativë [MWh]	D.L. Pozitivë [MWh]				
KURUM INTERNATIONAL	923	304	257	22	210	26	535	270	1,338	250	988	296	216	71	193	182	176	92	93	138	426	213	700	24	6,056	1,906						
DEVOLI HP	14	45	31		43	17	65	23	53	24	62	26	53	46	14	25	28	39	17	37	19	49	41	47	32	651						
DRAGOBIA ENERGY	2	64	1		60	3	89	3	105	75	137	8	161	7	95	1	59	3	36	64	20	251	9	128	134	1,250						
GEN 1								31	43					2												45	31					
ENER TRADE	970	225	542	182	761	554	1,132	218	1,255	281	955	516	1,094	465	1,168	331	691	327	916	914	1,052	335	1,302	237	11,918	4,525						
ENERGY 24	121	215	118	150	132	270	177	339																			548	974				
NOA	107	2	63	20	196	116	393	480	279	636	209	446	417	241	345	216	296	260	516	478						2,820	2,895					
DANSKE COMMODITIES																											3	34	46			
AYEN AS ENERJII	306	125	344	75	140	115	85	80	132	69	88	74	82	115	82	28	75	35	112	28	93	127	188	130	1,525	1,004						
GSA	125	1,641	760	151	1,681	490	1,489	30	1,871	173	1,945	94	4,465	24	2,971	257	2,449	1,05	1,568	160	560	474	660	634	20,554	4,294						
Furnituesit i Tregut te LP e FTL (OSHEE Grup)	5,671	27,980	3,452	26,029	6,623	24,823	6,634	24,902	6,236	11,822	3,977	15,316	4,815	15,569	2,879	14,061	1,600	14,207	2,970	12,773	6,277	30,406	5,791	25,293	56,921	243,182						
KESH (Pala Përgjegjëse Balancuese)	3,574	2,150	761	1,797	349	3,128	702	2,801	756	1,936	2,740	1,822	580	1,512	1,049	1,211	443	1,691	616	2,280	1,175	1,928	7,789	1,449	20,534	23,704						
EE-S ENERGY	186	326	178	45	288	110	221	135	291	224	344	139	268	42	238	50	225	95	112	97	85	94	78	77	7	2,652	1,279					
FUTURE ENERGY TRADING AND EXCHANGE DYNAMICS																											535	233	604	319	1,141	555
KOSTY	12,947	2,032	10,885	2,448	9,005	4,090	8,371	4,996	5,256	6,941	2,938	7,811	6,288	5,525	6,940	4,124	6,733	3,467	12,449	1,880	10,534	2,468	11,821	2,694	104,167	48,176						
KOSTY	1,322	2,661	332	2,987	1,975	1,457	1,117	1,616	1,781	1,933	1,285	863	2,326	655	1,689	1,314	1,201	1,328	1,362	901	4,446	1,043	2,222	1,064	21,048	17,822						
Ofruesi i Shërbimit te Balancimit	Ujër Gjenerim [MWh]	Rizik Gjenerim [MWh]	Ujër Gjenerim [MWh]	Rizik Gjenerim [MWh]	Ujër Gjenerim [MWh]	Rizik Gjenerim [MWh]	Ujër Gjenerim [MWh]	Rizik Gjenerim [MWh]	Ujër Gjenerim [MWh]	Rizik Gjenerim [MWh]	Ujër Gjenerim [MWh]	Rizik Gjenerim [MWh]	Ujër Gjenerim [MWh]	Rizik Gjenerim [MWh]	Ujër Gjenerim [MWh]	Rizik Gjenerim [MWh]	Ujër Gjenerim [MWh]	Rizik Gjenerim [MWh]	Ujër Gjenerim [MWh]	Rizik Gjenerim [MWh]	Ujër Gjenerim [MWh]	Rizik Gjenerim [MWh]	Ujër Gjenerim [MWh]	Rizik Gjenerim [MWh]	Ujër Gjenerim [MWh]	Rizik Gjenerim [MWh]	Ujër Gjenerim [MWh]	Rizik Gjenerim [MWh]	Ujër Gjenerim [MWh]	Rizik Gjenerim [MWh]		
Devoli HP Energjia Akt								2					6	42				2	103		331	55	1	98		162	479					
Devoli HP Energjia Shtese Akt														3												0	3					
KURUM INTERNATIONAL Energjia Akt									15	5																15	5					
Ayen AS Energjia Akt			170		319		84		197								258				344		134				1,506	0				
Ayen AS Energjia Shtese Akt																										0	0					
KESH Sh.a. Energjia Akt	10,369	4,843	11,233	3,901	9,882	7,363	10,554	5,985	7,702	5,204	9,165	2,640	8,014	6,865	7,242	6,156	7,228	1,691	3,836	4,773	7,500	4,225	9,947	2,153	102,643	59,900						
KESH Sh.a. Energjia Shtese Akt	9,453	3,510	8,201	3,047	7,997	2,608	7,992	2,857	3,209	1,629	3,904	798	2,114	1,598	2,274	350	3,279	3,928	866	1,377	4,080	3,151	5,492	3,264	58,460	28,101						
TOTALI	46,000	46,023	37,129	40,957	39,177	45,304	39,520	44,951	30,501	31,310	28,612	31,030	30,760	32,892	27,076	28,367	24,687	27,465	25,434	25,931	37,204	45,021	46,880	37,530	412,979.65	436,781.10						
Disbalancat mujore [MWh]	23			1,828		6,127		5,431		809		2,418		2,133		1,291		2,778		498		7,817				(9,350)		23,801				

Burimi: OST sha

KLIENDET NE TL	KLIENDET E "KUALIFIKUAR" PER VITIN 2023												
	Energjia e faturuar ne [MWh]												
	Janar	Shkurt	Mars	Prill	Maj	Qershor	Korrik	Gusht	Shtator	Tetor	Nentor	Dhjetor	2023
EL220-L220KURUM/337	17,724	3,540	1,712	15,407	33,141	30,601	3,313	3,339	2,360	2706	1390	1149	116,381
Titan T1,T2	9,331	4,543	7,006	10,642	11,097	10,636	11,282	10,350	5,451	7616	11042	10889	109,885
FUSHE KRUIJE 220kV-T2/058	-	409	3,878	1,910	2,903	1,997	8,346	2,418	6,068	7345	4471	6333	46,077
N/ST 220/6,3Colacent-T1/336	631	910	2,421	1,371	1,130	2,168	1,619	216	1,922	1400	1035	819	15,641
N/ST i GSA EL 110kV-T1/694	10,555	15,188	-	-	-	-	-	-	0	3081	8621	8589	46,033
N/ST i GSA EL 110kV-T2/960	-	219	15,779	16,873	17,440	16,979	17,438	17,030	17,081	7272	0	0	126,111
N/ST I CWI Albania T1/148	477	464	469	574.19	516	484	162	294	372	387	326	103	4,628
N/ST i AES EL 110kV-T1/690	30	48	-	-	1,491	6,969	7,274	7,290	3,460	4578	7583	7608	46,332
N/ST I AES EL 110kV-T2/692	111	84	1,175	6,722	5,719	-	-	6	3,636	1488	0	0	18,941
HEC Moglice T1,T2,T3	1	2	3	1	2.29	2	0.6	0.9	1	1	7	1	23
HEC Peshqesh-T1/633	7	20	4	3.52	6	20	31	32	30	27	2	1	185
Lajthiza T1/742	19	61	1	0.77	8	138	448	381	378	445	39	2	1,920
HEC Ashta1-T1,HEC Ashta2-T1,	0.13	-	-	0.00	-	-	-	0.00	0	0.08	0	0	0
HEC Banje T1,T2	14	14	18	15	25	18	21	18	20	18	14	11	206
HEC Fang-T1,T2.	10	27	19	36	34	48	52	47	23	21	15	9	340
Gjenerim KURUM	9.11	0	1	16.25	0.93	7	8	47	43	54	13	0	199
FERRO KROM-F1,F2,F3,F4	60	57	200	6,272	6,528	6,474	7,038	6,969	6,619	7231	6471	6966	60,884
TOTAL	38,979	25,586	32,684	59,843	80,042	76,540	57,032	48,438	47,464	43,670	41,029	42,480	593,786

Burimi: OST sha

Devijimet nga programi interkoneksionit 2023 (12-mujori)

Data	Minus = Hyrje		Plus = Dalje											2023
	Janar	Shkurt	Mars	Prill	Maj	Qershor	Korrik	Gusht	Shtator	Tetor	Nentor	Dhjetor		
1	94	-18	44	54	165	120	67	-61	13	223	157	536	1,395	
2	156	93	189	297	37	166	1728	28	75	141	142	1082	4,134	
3	-25	202	54	105	168	108	-79	-40	158	-54	-123	662	1,136	
4	0	92	-47	-74	77	200	-23	-51	312	13	640	192	1,332	
5	126	57	-57	65	251	303	198	554	74	-51	1170	-163	2,527	
6	69	10	85	-33	73	199	120	1141	31	-71	1435	-494	2,564	
7	-18	-185	256	49	271	28	20	223	57	-69	193	-699	124	
8	8	31	213	114	200	203	168	101	144	282	-121	-1588	-247	
9	7	147	52	-20	-9	108	165	-20	33	-54	-4	-2064	-1,660	
10	482	268	400	-64	76	10	-101	-254	88	-43	-467	-3753	-3,358	
11	-26	8	997	206	7	122	63	-33	217	-73	367	-98	1,757	
12	131	-3	410	192	63	36	189	-115	-174	-91	-135	86	591	
13	128	200	267	214	-82	233	147	3	-45	-154	982	572	2,465	
14	-1,084	805	67	465	-91	337	15	24	131	-31	42	508	1,188	
15	-41	143	-621	221	477	123	-126	-84	-192	-125	-134	398	39	
16	-1,634	194	40	142	363	440	26	-34	-892	45	511	33	-766	
17	738	280	13	-16	131	646	-324	14	-184	-536	93	80	936	
18	213	166	182	326	150	527	-145	234	26	91	561	-86	2,245	
19	682	337	157	360	3	323	48	11	-39	-190	430	-83	2,038	
20	787	155	199	155	25	-8	-30	240	52	27	-55	-74	1,474	
21	259	4	243	591	18	-196	-35	125	9	139	218	-166	1,210	
22	138	-292	164	303	103	-694	-27	49	107	155	6	162	175	
23	234	74	252	357	194	-1,971	346	-10	9	168	982	386	1,021	
24	587	189	102	280	-15	54	-80	129	163	34	889	141	2,474	
25	-134	142	222	567	256	267	-303	460	824	184	397	139	3,020	
26	-30	459	202	477	121	-37	-129	-20	461	1065	235	-21	2,784	
27	139	873	302	392	141	90	385	115	-143	-346	-25	57	1,981	
28	25	134	493	289	384	576	421	49	188	316	-67	-356	2,453	
29	-246	0	27	79	136	225	-48	208	101	268	115	-248	618	
30	98	0	223	406	158	212	-52	43	134	-19	662	-125	1,742	
31	118	0	396	0	51	0	-39	-10	0	-134	0	-294	89	
Total	1,983	4,564	5,524	6,498	3,904	2,747	2568	3020	1736	1113	9100	-5,276	37,480	

Burimi OST sha

Blerje KESH sips VKM 757							
Shoqëria	Periudha	Statusi	Sasia	Çmimi	Vlera	TVSH	Vlera me TVSH
			MWh	Euro/MWh	Euro	Euro	Euro
Janar	01-31.01.2023	Blerje	-	-	-	-	-
Shkurt	01-28.02.2023	Blerje	-	-	-	-	-
Mars	01-31.03.2023	Blerje	-	-	-	-	-
Prill	01-30.04.2023	Blerje	-	-	-	-	-
Maj	01-31.05.2023	Blerje	-	-	-	-	-
Qershor	01-30.06.2023	Blerje	-	-	-	-	-
Korrik	01-31.07.2023	Blerje	108,125.00	112.64	12,179,724.08	1,341,357.68	13,521,081.76
Gusht	01-31.08.2023	Blerje	107,700.00	107.60	11,588,616.00	420,374.40	12,008,990.40
Shtator	01-30.09.2023	Blerje	89,772.00	104.85	9,412,439.28	979,228.20	10,391,667.48
Tetor	01-31.10.2023	Blerje	161,710.00	107.84	17,438,810.72	2,023,433.68	19,462,243.92
Nentor	01-30.11.2023	Blerje	89,000.00	121.47	10,811,086.00	885,914.00	11,697,000.00
Dhjetor	01-31.12.2023	Blerje	5,120.00	120.86	618,812.00	123,762.40	742,574.40
TOTALE		Blerje	561,427	110	62,049,488	5,774,070	67,823,558

TOTALI I SHITJEVE PER OPTIMIZIM TE PORTOFOLIT EKONOMIK TE SHOQERISE KESH SH.A.						
Statusi		Sasia	Çmimi	Vlera	TVSH	Vlera me TVSH
		MWh	Eur/MWh	Eur	Eur	Eur
Shitje energji elektrike me procedura bazuar në rregulloren e Tregtimit Janar-Dhjetor 2023		6,000.00	86.71	520,287.60	104,057.52	624,345.12
Shitje energji elektrike për humbjet KOST Janar- Dhjetor 2023		-	-	-	-	-
Shitje energji elektrike për ofrim shërbime ndihmëse KOST Janar- Dhjetor 2023		23,052.99	-	4,257,113.14	-	4,257,113.14
Shitje energji elektrike për ofrim shërbime ndihmëse OST Janar- Dhjetor 2023		82,658.44	158.79	13,124,994.27	2,624,998.85	15,749,992.74
Shitje energji elektrike TEC Vlora-Renco spa-Karavasta për furnizim Janar-Dhjetor 2023		907.97	147.84	62,039.03	12,407.81	74,446.83
TOTALI		112,619.40	159.51	17,964,434.04	2,741,464.18	20,705,897.84

PORTOFOLIT EKONOMIK TE SHOQERISE KESH SH.A.

Statusi
Blerje energji elektrike me procedura bazuar ne rregullore e rregullimit Janar- Dhjetor 2023
Blerje energji elektrike per otrim sherbime ndihmese KOST Janar- Dhjetor 2023
Blerje energji elektrike per otrim sherbime ndihmese OST Janar- Dhjetor 2023
Blerje energji elektrike nga HEC ASHTA, bazuar ne kontratën
Blerje energji elektrike Kenco spa-Karavasta per furnizim Janar-Dhjetor 2023
TOTALI

Sasia	Çmimi	Vlera	TVSH	Vlera me TVSH
MWh	Eur/MWh	Eur	Eur	Eur
-	-	-	-	-
-	-	-	-	-
(161,288.00)	9.20	(1,483,411.58)	(296,682.31)	(1,780,535.93)
-	-	-	-	-
1,360.90	21.02	28,603.87	5,573.51	33,441.09
(161,288.00)	9.20	(1,483,411.58)	(296,682.31)	(1,780,535.93)

EFEKTI FINANCIAR NGA OTRIMIZIMI SHITJES DHE BLERJES

(48,668.60)	150.32	16,481,022.46	2,444,781.86	18,925,361.90
--------------------	---------------	----------------------	---------------------	----------------------

Shitje ne kushtet e prurjeve te medha

Shoqëria	Periudha	Statusi	Sasia	Çmimi	Vlera
			MWh	Euro/MWh	Euro
Janar	01-31.01.2023	Shitje	135,690.00	109.01	14,792,103.12
Shkurt	01-28.02.2023	Shitje	40,686.00	95.79	3,897,117.32
Mars	01-31.03.2023	Shitje	-	-	-
Prill	01-30.04.2023	Shitje	-	-	-
Maj	01-31.05.2023	Shitje	215,137.00	62.80	13,509,555.03
Qershor	01-30.06.2023	Shitje	96,024.00	85.68	8,227,773.12
Korrik	01-31.07.2023	Shitje	-	-	-
Gusht	01-31.08.2023	Shitje	-	-	-
Shtator	01-30.09.2023	Shitje	-	-	-
Tetor	01-31.10.2023	Shitje	-	-	-
Nentor	01-30.11.2023	Shitje	80,600.00	102.99	8,301,300.76
Dhjetor	01.31.12.2023	Shitje	71,400.00	101.72	7,262,752.44
TOTALE		Shitje	639,537.00	87.55	55,990,601.79

E DETAJUAR SIPAS SHOQERIVE

Shoqëritë	Sasia (MWh)	EUR/MWh	Vlera	TVSH	Vlera me TVSH
ReNRGY Trading Group	627	58.58	36,729.66	7,345.93	44,075.59
AYEN Energy Trading	1,023	41.99	42,955.77	8,591.15	51,546.92

Janar 2023	GSA	57,381	131.18	7,527,516.29	1,505,503.26	9,033,019.55
	Tirana International Development	27,458	82.26	2,258,698.00	451,739.60	2,710,437.60
	Danske Commodities Albania	3,600	112.35	404,460.00	80,892.00	485,352.00
	GEN-I Tirana	13,199	121.38	1,602,095.50	320,419.10	1,922,514.60
	EFT AG	29,700	91.54	2,718,804.00	-	2,718,804.00
	Fuente	432	82.35	35,573.60	-	35,573.60
	ReNRGY Trading Group SR Beograd	2,270	72.81	165,270.30	-	165,270.30
	TOTALE	135,690.00	109.01	14,792,103.12	2,374,491.04	17,166,594.16
Shkurt 2023	Shoqëritë	Sasia (MWh)	EUR/MWh	Vlera	TVSH	Vlera me TVSH
	ReNRGY Trading Group	696	35.35	24,603.60	4,920.72	29,524.32
	EZ-5 Energy shpk	1,800	41.62	74,916.00	14,983.20	89,899.20
	GSA	2,636	45.90	120,990.96	24,198.19	145,189.15
	Tirana International Development	3,600	41.00	147,600.00	29,520.00	177,120.00
	Danske Commodities Albania	8,250	93.15	768,487.50	153,697.50	922,185.00
	GEN-I Tirana	6,030	119.54	720,825.30	144,165.06	864,990.36
	EFT AG	17,590	115.71	2,035,298.00	-	2,035,298.00
	Fuente	84	52.33	4,395.96	-	4,395.96
TOTALE	40,686.00	95.79	3,897,117.32	371,484.67	4,268,601.99	
Mars 2023	Shoqëritë	Sasia (MWh)	EUR/MWh	Vlera	TVSH	Vlera me TVSH
	TOTALE	-	-	-	-	-
023	Shoqëritë	Sasia (MWh)	EUR/MWh	Vlera	TVSH	Vlera me TVSH

Prill 21						
	TOTALE	-	-	-	-	-

Maj 2023	Shoqëritë	Sasia (MWh)	EUR/MWh	Vlera	TVSH	Vlera me TVSH
	Duferco Hellas S.A	2,640	79.40	209,616.00		209,616.00
	NOA Energy Trade sh.p.k	10,740	75.24	808,110.00	161,622.00	969,732.00
	Future Energy Trading&Exchange Dyt	1,143	63.18	72,219.97	-	72,221.57
	EFT(AG)	69,966	56.79	3,973,381.42		3,973,381.42
	Info-Telecom sh.p.k	25,600	64.67	1,655,476.00	331,095.20	1,986,571.20
	Ayen Energy Trading sh.a	4,860	68.02	330,565.80	66,113.16	396,678.96
	GSA Shpk	21,000	61.60	1,293,600.00	258,720.00	1,552,320.00
	EZ-5 ENERGY sh.p.k	672	70.41	47,315.52	9,463.10	56,778.62
	ReNRGY Trading Group SR d.o.o Beog	2856	71.77	204,975.12	-	204,975.12
	Danske Commodities Albania	43,680	67.13	2,932,423.20	586,484.64	3,518,907.84
	Tirana International Development	31,500	62.00	1,953,000.00	390,600.00	2,343,600.00
	Gen-I Tirana	480	60.15	28,872.00	5,774.40	34,646.40
TOTALE	215,137.00	-	13,509,555.03	1,809,872.50	15,319,427.53	

Qershor 2023	Shoqëritë	Sasia (MWh)	EUR/MWh	Value	TVSH	Vlera me TVSH
	Duferco Hellas s.a.	960	90.00	86,400.00	-	86,400.00
	EFT AG	49,440	74.85	3,700,550.40	-	3,700,550.40
	EZ-5 Energy sh.p.k.	336	101.57	34,127.52	6,825.50	40,953.02
	GEN-I Tirana sh.p.k.	8,424	76.67	645,864.00	129,172.80	775,036.80
	GSA shpk	26,640	105.44	2,808,799.20	561,759.84	3,370,559.04
	Info Telecom sh.p.k.	10,224	93.12	952,032.00	190,406.40	1,142,438.40
TOTALE	96,024.00	85.68	8,227,773.12	888,164.54	9,115,937.66	

23	Shoqëritë	Sasia (MWh)	EUR/MWh	Vlera	TVSH	Vlera me TVSH
	EFT AG	60,246	99.12	5,971,527.50	-	5,971,527.50
	GEN-I Tirana sh.p.k.	13,300	113.14	1,504,804.00	300,960.80	1,805,764.80

Nentor 21	GSA sh.p.k.	900	130.66	117,594.00	23,518.80	141,112.80
	Fuente Dynamics sh.p.k. /Kosove	154	113.71	17,511.26	-	17,511.26
	Danske Commodities Albania sh.p.k.	3,400	121.30	412,404.00	82,480.80	494,884.80
	HSE d.oo	2,600	106.72	277,460.00		277,460.00
	TOTALE	80,600.00	102.99	8,301,300.76	406,960.40	8,708,261.16
Dhjetor 2023	Shoqëritë	Sasia (MWh)	EUR/MWh	Vlera	TVSH	Vlera me TVSH
	NOA Energy Trade sh.p.k.	3,600	102.70	369,720	73,944	443,664
	EFT AG	30,672	101.60	3,116,305.44	-	3,116,305.44
	GEN-I Tirana sh.p.k.	7,200	117.77	847,944	169,588.80	1,017,532.80
	Renrgy Trading Group sh.p.k.	1,980	90.69	179,566.20	35,913.24	215,479.44
	GSA sh.p.k.	8,640	104.50	902,880	180,576.00	1,083,456.00
	Fuente Dynamics sh.p.k. /Kosove	288	101.10	29,116.80	-	29,116.80
	Ener Trade sh.p.k	19,020	95.54	1,817,220	363,444.00	2,180,664.00
	TOTALE	71,400.00	101.72	7,262,752.44	823,466.04	8,086,218.48

E DETAJUAR SIPAS SHOQERIVE

Viti 2023	SHITJE ENERGJI ELEKTRIKE NE KUSHTET E PRURJEVE TE MEDHA					
Korrik 2023	Shoqëritë	Sasia (MWh)	EUR/MWh	Vlera	TVSH	Vlera me TVSH
	Ayen Energy Trading sh.a.	100	73.00	7,300.00	1,460.00	8,760.00
	Danske Commodities Albania sh.p.k.	13,940	112.45	1,567,570.20	313,514.04	1,881,084.24
	Duferco Hellas s.a.	1,440	91.25	131,400.00	-	131,400.00
	EFT AG	45,360	117.07	5,310,445.20	-	5,310,445.20
	Fuente Dynamics	245	126.90	31,090.50	-	31,090.50
	GEN-I Tirana sh.p.k.	2,400	113.84	273,204.00	54,640.80	327,844.80
	GSA shpk	9,160	91.77	840,601.00	168,120.20	1,008,721.20
	NOA Energy Trade sh.p.k.	3,984	96.44	384,216.00	76,843.20	461,059.20

	Renrgy Trading Group sh.p.k.	1,406	98.69	138,761.18	27,752.24	166,513.42
	TID sh.p.k	30,090	116.16	3,495,136.00	699,027.20	4,194,163.20
	Totale	108,125	112.64	12,179,724.08	1,341,357.68	13,521,081.76

Gusht 2023	Shoqëritë	Sasia (MWh)	EUR/MWh	Value	TVSH	Vlera me TVSH
	EFT AG	87,360	108.59	9,486,744.00	-	9,486,744.00
	GEN-I Tirana sh.p.k.	7,200	104.67	753,624.00	150,724.80	904,348.80
	GSA shpk	3,000	90.36	271,080.00	54,216.00	325,296.00
	NOA Energy Trade sh.p.k.	4,320	107.70	465,264.00	93,052.80	558,316.80
	TID sh.p.k.	5,820	105.14	611,904.00	122,380.80	734,284.80
	TOTALE	107,700	107.60	11,588,616.00	420,374.40	12,008,990.40

Shtator 2023	Shoqëritë	Sasia (MWh)	EUR/MWh	Value	TVSH	Vlera me TVSH
	Ayen Energy Trading sh.a.	972	109.00	105,948.00	21,189.60	127,137.60
	Danske Commodities Albania sh.p.k.	6,840	102.91	703,929.60	140,785.92	844,715.52
	EFT AG	42,480	105.66	4,488,631.20	-	4,488,631.20
	Ener Trade sh.p.k.	13,680	110.13	1,506,564.00	301,312.80	1,807,876.80
	EZ-5 Energy sh.p.k.	900	107.85	97,065.00	19,413.00	116,478.00
	Fuente Dynamics	252	109.79	27,667.08	-	27,667.08
	GEN-I Tirana sh.p.k.	1,800	80.90	145,620.00	29,124.00	174,744.00
	GSA shpk	16,800	98.50	1,654,800.00	330,960.00	1,985,760.00
	NOA Energy Trade sh.p.k.	5,760	112.70	649,152.00	129,830.40	778,982.40
	Proinfinit Consulting sh.p.k.	288	114.80	33,062.40	6,612.48	39,674.88
TOTALE	89,772	104.85	9,412,439.28	979,228.20	10,391,667.48	

	Shoqëritë	Sasia (MWh)	EUR/MWh	Value	TVSH	Vlera me TVSH
	NOA Energy Trade sh.p.k.	960	112.70	108,192.00	21,638.40	129,830.40
	EFT AG	66,210	107.84	7,139,755.60	-	7,139,755.60
	GEN-I Tirana sh.p.k.	18,950	105.78	2,004,448.40	400,889.68	2,405,338.08

Tetor 2023	Renrgy Trading Group sh.p.k.	3,654	98.65	360,451.98	72,090.40	432,542.38
	Danske Commodities Albania sh.p.k.	10,340	111.13	1,149,037.60	229,808.00	1,378,845.12
	GSA sh.p.k.	12,900	98.52	1,270,845.80	254,169.16	1,525,014.96
	Ayen Energy Trading sh.a.	162	109.00	17,658.00	3,531.60	21,189.60
	Fuente Dynamics sh.p.k. /Kosove	462	100.67	46,510.38	-	46,510.38
	Proinfinit Consulting sh.p.k	216	110.15	23,792.16	4,758.43	28,550.59
	Ener Trade sh.p.k	31,726	113.96	3,615,638.00	723,127.60	4,338,765.60
	EZ-5 ENERGY sh.p.k	1,025	108.93	111,648.75	22,329.75	133,978.50
	AlbEsp Trading&Consulting	13,860	105.01	1,455,453.30	291,090.66	1,746,543.96
	Axpo d.o.o Beograd	525	109.75	57,618.75	-	57,618.75
	HSE d.oo	720	108.00	77,760.00	-	77,760.00
	TOTALE	161,710	107.8400267	17,438,810.72	2,023,433.68	19,462,243.92
Nëntor 2023	Shoqëritë	Sasia (MWh)	EUR/MWh	Value	TVSH	Vlera me TVSH
	EFT AG	50,200	123.25	6,187,116	-	6,187,116.00
	TID (Tirana International Development) s	21,600	122	2,635,200	527,040	3,162,240.00
	GSA sh.p.k.	2,500	112	280,000	56,000	336,000.00
	Ener Trade sh.p.k	12,900	117.39	1,514,370	302,874	1,817,244.00
	HSE d.oo	1,800	108	194,400	0	194,400.00
	TOTALE	89,000	121.47	10,811,086	885,914	11,697,000
Dhjetor 2023	Shoqëritë	Sasia (MWh)	EUR/MWh	Value	TVSH	Vlera me TVSH
	Ayen Energy Trading sh.a.	800	95.81	76,648	15,329.60	91,977.60
	GSA	3,680	125.59	462,160	92,432	554,592.00
	GEN-I Tirana sh.p.k.	400	123.21	49,284	9,857	59,140.80
	Ener Trade sh.p.k	240	128.00	30,720	6,144	36,864.00
	TOTALE	5,120	120.86	618,812	123,762	742,574

Burimi KESH sha
