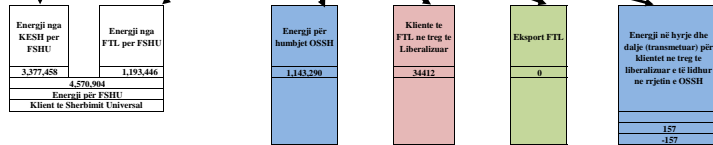


BILANCI ENERGETIK 10-MUJOR 2023 (MWh)

Prodhimi neto publik		Prodhuar nga PPE në rrjetin e OSSH			Prodhuar nga PPE në rrjetin e OST		Prodhues të pavarur						Prodhimi neto vendas	
Prodhimi Neto KESH sht		Shtet	H/C Priv/Kom në Rrjetin e OSSH për FTL	FOTOVOLTAIK (kom FTL)	H/C Priv/Kom në Rrjetin e OST për FTL	Neto Asha	Neto Bimaj	Neto Murgjet	Neto KURUM	H/C Dëshgab	H/C Murgu	Hec Qum	Produktet (në treg të lirë)	
4,325,307		19,008	736,442	55,678	776,109	231,584	130,259	227,041	293,918	67,800	182,705	2,744	16,868	7,065,463
Blerje KESH në treg të liberalizuar	467,307													
Prodhim-Blerje	4,792,614													
Shtetshëmbime (hryrje) - KEK														
Shtetshëmbime (dajçe) - KEK	1,415,156													
Energji shërbime ndihmëse - vllshul														
Energji për FSHU nga KESH sht	3,377,458													

Energji e siguruar nga FTL					
Blerje Neto (Sht)	Blerje HC Priv/Kom në Rrjetin e OSSH për FTL	Blerje FOTOVOLTAIK	Blerje HC Priv/Kom në Rrjetin e OST për FTL	Blerje Neto Asha	Blerje në Treg të Liberalizuar nga FTL
19,008	736,442	55,678	776,109	231,584	552,484
					3,371,305

Balanca në interkonexione (dhe me)
634,576



KONSUMI ENERGETIK NE SHQIPERI	6,430,925
-------------------------------	-----------

6,430,887

Burimi: OST sht; KESH sht; OSSH sht; FSHU sht; FTL sht; OSHEE Group sht

TABELA ME TE DHENA PERIODIKE (MUJORE) TE OSHEE Sh.a 2022			Janar	Shkurt	Mars	Prill	Maj	Qershor	Korrik	Gusht	Shtator	Tetor	Progressive
A	Energji Totale e Hyrë në OSHEE Sh.a (MWh)	A=A.1+A.3-A1.7	699,061	657,581	613,056	558,722	504,227	501,704	609,571	599,268	505,838	495,084	5,765,020
A.1	Energji e transmetuar nepermjet OST per logari te OSHEE Sh.a	A.1=Sum(A.1.1,A.1.6)	579,063	578,104	474,777	430,748	381,351	400,494	563,277	573,575	485,373	470,263	4,937,024
A.1.1	Nga KESH -Gen nepermjet OST		411,308	474,700	310,547	226,897	129,492	178,720	422,634	477,585	398,134	347,440	3,377,458
A.1.2	Nga OST si import i OSHEE Sh.a		3,984	3,360	3,715	57,327	92,381	100,499	80,695	61,820	58,831	89,873	552,484
A.1.3	Energji e transmetuar per klientet 35KV (te dal ne treg te pa)		21	19	26	30	43	19	-	-	-	-	157
A.1.4	Nga OST per logari te klienteve te OSHEE Sh.a prodhuar nga		163,750	100,025	160,488	146,495	159,435	121,256	59,948	34,171	28,408	32,950	1,006,925
A.1.5	Nga TEC VLORA nepermjet OST		n/a	n/a	n/a	n/a	n/a	n/a	n/a	n/a	n/a	n/a	n/a
A.1.6	Nga Bistrice 1,2 nepermjet OST		n/a	n/a	n/a	n/a	n/a	n/a	n/a	n/a	n/a	n/a	n/a
A.1.7	Export OSHEE Group Sh.a		-	-	-	-	-	-	-	-	-	-	-
A.2	Energji elektrike e injektuar ne OST nga Hec-et Lokale	A.2	59,687	29,705	75,556	68,977	67,556	54,066	14,241	4,573	3,325	3,956	381,644
A.3	Energji e transmetuar direkt ne rrjetin e OSHEE Sh.a	A.3 = Sum(A.3.1, A.3.3)	119,998	79,477	138,280	127,974	122,876	101,210	46,294	25,693	20,465	24,822	827,996
A.3.1	HEC Ulez,Lanabregas		1,990	1,984	2,352	2,231	2,259	1,955	1,859	1,819	1,435	1,126	19,008
A.3.2	Impjantet Private/me Koncesion		115,928	74,408	132,656	121,556	114,368	92,807	36,581	16,598	13,324	18,209	736,443
A.3.3	Burimet e Rinovueshme Fotovoltaik (BRE)		2,081	3,086	3,272	4,179	6,249	6,449	7,854	7,276	5,706	5,487	51,638
A.3.4	Prodhimi i injektuar ne OSSH nga BREE-t ne Treg te Parregulluar		1,528	2,360	2,652	2,969	1,958	2,105	2,480	2,131	1,527	1,196	20,906
B	Energji Totale ne Rrjetin e Shperndarjes (MWh)	B=A+ A.1.3+A.2	758,748	687,286	688,613	627,700	571,783	555,770	623,813	603,841	509,163	499,041	6,125,758
C	Humbjet Totale ne Rrjetin e Shperndarjes (MWh)	C=C.1+C.2+C.3	195,699	131,027	144,936	117,090	95,359	89,146	109,054	97,670	75,381	87,928	1,143,290
C.1	Humbje Teknikke njesite e TL (MWh)		9,646	8,281	8,784	6,506	8,231	8,106	9,590	8,151	6,124	7,168	80,586
C.2	Humbje Teknikke ne Zona (MWh)		114,969	83,263	87,857	72,373	57,936	55,846	71,582	66,209	48,509	49,986	708,529
C.3	Humbje JoTeknike ne Zona (MWh)		71,085	39,483	48,295	38,211	29,193	25,194	27,883	23,309	20,748	30,773	354,175
C.1	Humbjet Totale ne OSHEE Sh.a (%)	C.1= C/B	25.79%	19.06%	21.05%	18.65%	16.68%	16.04%	17.48%	16.17%	14.80%	17.62%	18.66%
C.1.1	Humbje Teknikke njesite e TL (%)		1.27%	1.20%	1.28%	1.04%	1.44%	1.46%	1.54%	1.35%	1.20%	1.44%	1.32%
C.2.1	Humbje Teknikke ne Zona (%)		15.36%	12.27%	12.93%	11.66%	10.29%	10.20%	11.66%	11.12%	9.65%	10.17%	11.73%
C.3.1	Humbje JoTeknike ne Zona (%)		9.37%	5.74%	7.01%	6.09%	5.11%	4.53%	4.47%	3.86%	4.07%	6.17%	5.78%
D	Energjia e perdorur ne Rrjetin e Shperndarjes	D=Sum(D.1:D.7)	560,438	553,736	540,611	507,624	473,583	462,399	507,247	498,418	428,372	405,577	4,938,004
D.1	Shitur Klienteve FMF (MWh)	D.1=D.1.1+D.1.2	87,526	86,617	92,750	82,632	87,681	85,890	99,601	96,563	88,715	88,854	896,828
D.1.1	Shitur Klienteve FMF Privat (MWh)		38	29	1,747	80	119	229	50	118	76	475	2,961
D.1.2	Shitur Klienteve FMF JoBuxhetore(MWh)		1,963	1,497	(1,426)	1,484	1,604	1,842	1,813	1,984	1,637	1,756	14,153
D.1.3	Shitur Klienteve FMF 20/10/6 (MWh)		85,525	85,091	92,429	81,068	85,958	83,819	97,738	94,461	87,001	86,624	879,714
D.2	Shitur Klienteve Private (MWh)	D.2= D.2.1+D.2.2+D.2.3	90,903	96,966	87,186	84,353	84,530	94,649	125,236	125,931	104,009	88,917	982,681
D.2.1	Shitur nga rrjeti i Transmetimit per logari te OSHEE Sh.a		-	-	-	-	-	-	-	-	-	-	-
D.2.2	Shitur per nevoja te veta te OSHEE Sh.a		645	658	693	562	421	319	436	457	328	391	4,909
D.2.3	Shitur Klienteve Private (pa ate per		90,258	96,308	86,494	83,791	84,109	94,330	124,800	125,474	103,682	88,526	977,772
D.3	Shitur Klienteve JoBuxhetore (MWh)		3,171	3,283	3,066	2,842	2,865	2,626	3,277	3,242	2,772	2,686	29,832
D.4	Shitur Klienteve Buxhetore (MWh)		14,725	15,636	13,342	12,204	10,127	9,131	10,390	10,239	10,643	10,999	117,437
D.5	Shitur Klienteve Familjare (MWh)	D.5=D.5.1+D.5.2	304,405	321,511	268,684	256,586	220,781	216,017	254,501	257,870	218,908	210,164	2,529,426
D.5.1	Shitur Klienteve Familjare (MWh)		296,730	314,046	260,733	249,296	213,201	206,933	246,502	249,893	210,912	202,352	2,450,597
D.5.2	Shitur Klienteve Familjare per Ambjentet e Perbashketa		7,675	7,464	7,951	7,290	7,580	9,083	8,000	7,977	7,997	7,812	78,829
D.6	Energji elektrike e injektuar ne OST nga Hec-et Lokale	D.6=A.2	59,687	29,705	75,556	68,977	67,556	54,066	14,241	4,573	3,325	3,956	381,644
D.7	Energji elektrike e perdorur nga klientet ne treg te parregulluar	D.7	21	19	26	30	43	19	-	-	-	-	157
E	Faturuar muaji Parardhes (000/leke)		7,458,986	7,236,860	7,477,014	6,588,875	6,321,511	5,993,172	6,074,125	7,326,635	7,281,460	6,339,551	68,098,190
F	Arketimet e muajit aktual (000/leke)	G=F.1+F.2+F.3+F.4	6,881,621	6,813,758	7,491,687	6,124,229	6,813,596	5,811,853	5,684,626	7,440,201	7,365,263	7,213,799	67,640,634
F.1	Arketuar per faturat korrente te vitit aktual		17,571	4,658,797	5,070,755	3,091,044	4,170,066	3,615,891	3,310,557	4,414,029	4,472,047	4,133,051	36,953,808
F.3	Arketuar per faturat e tjera te vitit aktual		-	-	1,589,330	2,666,176	2,335,047	1,934,852	2,106,438	2,562,075	2,469,763	2,666,282	18,329,964
F.4	Arketuar per faturat e tjera te viteve te kaluara		6,864,050	2,154,961	831,603	367,010	308,483	261,110	267,632	464,097	423,452	414,465	12,356,863
F.1	Arketimet e muajit aktual (%)	F.1=F/E	92.3%	94.2%	100.2%	92.9%	107.8%	97.0%	93.6%	101.6%	101.2%	113.8%	99.3%
F.1.1	Arketuar per faturat korrente te vitit aktual	F.1.1=F.1/E	0.2%	64.4%	67.8%	46.9%	66.0%	60.3%	54.5%	60.2%	61.4%	65.2%	54.3%
F.1.3	Arketuar per faturat e tjera te vitit aktual (%)	F.1.3=F.3/E	0.0%	0.0%	21.3%	40.5%	36.9%	32.3%	34.7%	35.0%	33.9%	42.1%	26.9%
F.1.4	Arketuar per faturat e tjera te viteve te kaluara (%)	F.1.4=F.4/E	92.0%	29.8%	11.1%	5.6%	4.9%	4.4%	4.4%	6.3%	5.8%	6.5%	18.1%
G	Faturuar muaji Raportues (000/leke)		7,236,860	7,477,014	6,588,875	6,321,511	5,993,172	6,074,125	7,326,635	7,281,460	6,339,551	5,987,458	66,626,662
1	Nr. Konsumatoreve gjithsej (Nr.)		1,303,679	1,305,432	1,308,515	1,308,397	1,148,821	1,312,353	1,313,477	1,316,039	1,317,798	1,319,413	1,313,477
2	Fatura te emetuara me lexim konsumi (Nr.)		1,002,695	1,004,350	1,016,651	1,018,757	1,014,495	1,027,799	1,041,646	1,050,675	1,049,321	1,048,276	10,274,665
3	Sasia e energjise se faturuar me lexim konsumi (MWh)		-	-	-	-	-	-	-	-	-	-	-
4	Fatura te emetuara me lexim "Q" (Nr.)		303,472	304,589	295,744	297,428	140,844	296,170	275,928	269,684	277,861	281,533	2,743,253
5	Nr.Faturave te emetuara pa lexim (energjia e pamatur) (Nr.)		-	-	-	-	-	-	-	-	-	-	-
6	Sasia e energjise se faturuar si energji e pamatur (MWh)		-	-	-	-	-	-	-	-	-	-	-
7	Nr.Faturave te emetuara pa lexim (dem ekonomik) (Nr.)		35	37	149	8	78	26	61	30	52	78	554
8	Sasia e faturuar si dem ekonomik (MWh)		535	696	702	45	230	78	3,379	2,977	433	1,017	10,993
9	Nr.Faturave per te cilat eshte arketuar kamat vonese (Nr.)		331,668	313,298	9,807	329,612	-	-	-	-	458,408	443,979	1,886,772
10	Vlera e Kamat vonesave te arketuara (000/leke)		132,185	119,494	78,782	72,486	83,076	90,849	80,794	158,719	130,732	183,502	1,130,619

BILANCI OSSH, FSHU,FTL sha 2023 (10-mujori)

1	ENERGJI TOTALE E HYRE NE RRJETIN E OSSH-se		3,547,925
2	Energji e shitur nga KESH sha per FSHU sha		3,377,458
3	ENERGJI NE HYRJE E BLERE NGA FTL (OSHEE sha)		2,371,306
3.1	Blere nga Prodhimi i PPE në rrjetin e OSSH		811,129
3.2	Blere nga Prodhimi i PPE në rrjetin e OST		1,007,693
3.3	Blere ne Treg të Liberalizuar nga FTL sha		552,484
4	ENERGJI NE DALJE NGA FTL (OSHEE sha)		2,371,305
4.1	Energji nga FTL per FSHU		1,193,446
4.2	Energji nga FTL për humbjet OSSH		1,143,290
4.3	Energji e shitur nga FTL ne treg te liberalizuar		34,412
4.4	Eksport i FTL		-
4.5	Energji vetem per tu transmetuar tek klientet ne treg te liberalizuar (ne rrjetin e OSSH)		157
7	ENERGJI QE KALON NE RRJETIN E OSSH-se		6,125,758
7.1	Energji totale e transmetuar nga OST ne rrjetin e Shpërndarjes		5,297,762
7.2	Energji e transmetuar direkt ne rrjetin e Shpërndarjes nga impiantet e lidhur ne rrjetin e Shpërndarjes		429,484
7.3	Energjia e ngitur ne rrjetin e transmetimit nga centralet e lidhura ne rrjetin e OSSH		381,644
8	Humbje totale ne rrjetin e OSSH-se (%)	7.1 x 100 / 7	18.66

Burimi: OSSH sha; FSHU sha; FTL sha; OSHEE Group sha

Bilanci i Energjisë Elektrike për vitin 2023

OST sha	Njësia e Matjes	Janar	Shkurt	Mars	Prill	Maj	Qershor	Korrik	Gusht	Shtator	Tetor	Shuma 2023 [MWh]
	MWh											
Prodhimi nga KESH_GEN në Rrjetin e Transmetimit	1	665,048	599,427	350,763	318,558	488,334	381,563	405,103	455,548	377,610	283,354	4,325,307
Prodhimi nga HEC/HPP e vogla në Rrjetin e Transmetimit	2	59,687	29,705	75,556	68,977	67,556	54,066	14,241	4,573	3,325	3,956	381,644
Prodhimi nga PPE/IPP e mëdha në Rrjetin e Transmetimit	3	129,234	69,919	138,215	127,256	133,255	100,979	41,042	12,984	9,130	16,838	778,851
Prodhimi nga HEC Peshqesh	4	13,532	6,558	13,089	12,741	9,140	5,257	2,507	1,463	1,281	2,232	67,800
Prodhimi nga HEC Banja	5	19,006	17,988	18,262	12,703	7,780	20,938	10,916	7,489	5,847	9,330	130,259
Prodhimi nga HEC FANG	6	41,733	21,699	32,666	20,161	17,504	6,123	4,155	8,673	17,951	12,041	182,705
Prodhimi nga HEC Moglicë	7	30,090	33,919	31,602	23,209	12,164	37,614	14,178	7,089	16,866	20,311	227,041
Prodhimi nga HEC Ashta	8	35,169	30,291	23,019	20,043	26,672	20,513	18,998	21,314	19,370	16,195	231,584
Prodhimi nga KURUM (Ulez-Shkopet&Bistrica1,2)	9	44,271	41,090	36,363	34,900	45,761	26,674	26,849	13,613	12,370	12,028	293,918
Eksporti (-) nga Linjat e Interkonjeksionit	D	387,717	265,662	250,922	199,681	364,397	222,009	125,007	142,789	184,860	136,512	2,279,556
Importi (+) nga Linjat e Interkonjeksionit	R	51,364	63,212	131,284	135,881	106,085	113,475	235,733	250,341	268,859	288,745	1,644,980
Balanca (Total Interkonjeksioni)	11=(R-D)	336,353	202,450	119,638	63,799	258,312	108,535	(110,726)	(107,553)	(83,999)	(152,233)	634,576
Energjia Totale në Marrje	+3+4+5+6+7+8+9	#####	913,807	850,819	774,430	914,251	767,200	773,722	783,086	732,609	665,030	8,264,089
Humbjet në Rrjetin e Transmetimit (përfshirë Nevojat)	13	25,216	17,110	19,532	18,151	22,863	16,197	16,646	15,842	13,113	11,825	176,495
Humbjet në Rrjetin e Transmetimit %	14=13/12	2.32	1.87	2.30	2	3	2	2	2.02	1.79	1.78	2.14
Energjia Totale në Dhënie	15=(12-13)	#####	896,697	831,287	756,279	891,388	751,004	757,077	767,244	719,496	653,205	8,087,594
<i>Transmetuar në Linjat e Interkonjeksionit</i>	16=D	387,717	265,662	250,922	199,681	364,397	222,009	125,007	142,789	184,860	136,512	2,279,556
<i>Transmetuar tek Klientët e Kualifikuar</i>		38,979	25,586	32,684	59,843	80,042	76,540	57,032	48,438	47,465	43,669	510,276
<i>EL220-L220KURUM/337</i>		17,724	3,540	1,712	15,407	33,141	30,601	3,313	3,339	2,360	2,706	113,842
<i>Titan T1,T2</i>		9,331	4,543	7,006	10,642	11,097	10,636	11,282	10,350	5,451	7,616	87,954
<i>FUSHE KRUIJE 220kV-T2/058</i>		-	409	3,878	1,910	2,903	1,997	8,346	2,418	6,068	7,345	35,273
<i>N/ST 220/6,3Colacent-T1/336</i>		631	910	2,421	1,371	1,130	2,168	1,619	216	1,922	1,400	13,787
<i>N/ST i GSA EL 110kV-T1/694</i>		10,555	15,188	-	-	-	-	-	-	-	3,081	28,823
<i>N/ST i GSA EL 110kV-T2/960</i>		-	219	15,779	16,873	17,440	16,979	17,438	17,030	17,081	7,272	126,110
<i>N/ST I CWI Albania T1/148</i>		477	464	469	574.19	516	484	162	294	372	387	4,199
<i>N/ST i AES EL 110kV-T1/690</i>		30	48	-	-	1,491	6,969	7,274	7,290	3,460	4,578	31,141
<i>N/ST I AES EL 110kV-T2/692</i>		111	84	1,175	6,722	5,719	-	-	6	3,636	1,488	18,941
<i>HEC Moglice T1,T2,T3</i>		1	2	3	1	2.29	2	0.6	0.9	1	1	14
<i>HEC Peshqesh-T1/633</i>		7	20	4	3.52	6	20	31	32	30	27	182
<i>Lajthiza T1/742</i>		19	61	1	0.77	8	138	448	381	378	445	1,879
<i>HEC Ashta1-T1,HEC Ashta2-T1,</i>		0.13	-	-	0.00	-	-	-	-	-	0.08	0
<i>HEC Banje T1,T2</i>		14	14	18	15	25	18	21	18	20	18	181
<i>HEC Fang-T1,T2.</i>		10	27	19	36	34	48	52	47	23	21	317
<i>Gjenerim KURUM</i>		9.11	0	1	16.25	0.93	7	8	47	43	54	185
<i>FERRO KROM-F1,F2,F3,F4</i>		60	57	200	6,272	6,528	6,474	7,038	6,969	6,619	7,231	47,447
<i>Transmetuar në rrjetin e Shpërndarjes</i>		637,223	605,449	547,681	496,756	446,949	452,455	575,038	576,018	487,171	473,023	5,297,762
<i>Transmetuar në rrjetin e Shpërndarjes 110 kV</i>		557,157	527,056	480,865	437,248	395,459	400,674	507,076	509,662	427,735	412,241	4,655,174
<i>Transmetuar në rrjetin e Shpërndarjes 35 kV</i>		43,042	41,140	35,667	31,282	28,494	29,728	39,388	38,182	35,331	35,464	357,718
<i>Transmetuar në rrjetin e Shpërndarjes 6, 10, 20 kV</i>		37,023	37,253	31,148	28,227	22,996	22,053	28,574	28,174	24,105	25,318	284,870

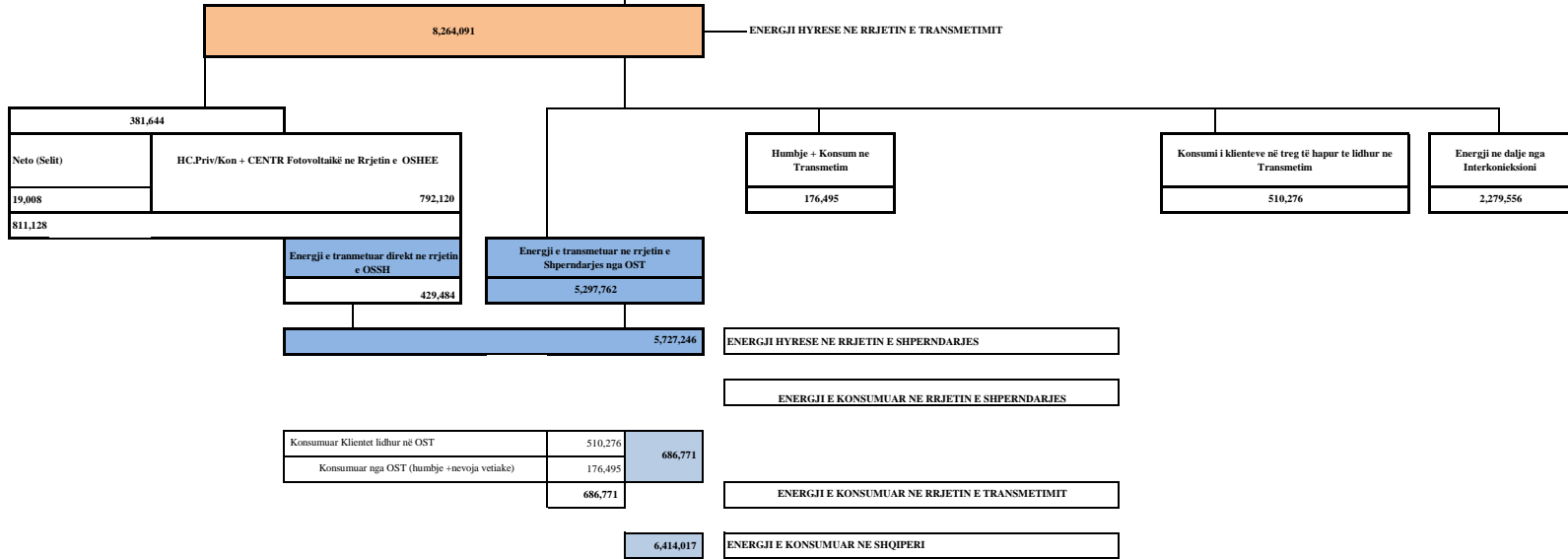
Burimi: OST sha

	Janar	Shkurt	Mars	Prill	Maj	Qershor	Korrik	Gusht	Shtator	Tetor	2023		
HYRJE	Dhene nga H/C e KESH ne rrjetin e Transmetimit	665,048	599,427	350,763	318,558	488,334	381,563	405,103	455,548	377,610	283,354	4,325,307	8,264,089
	Dhene nga H/C e me perparesi ne rrjetin e Transmetimit (+Qami)	129,234	69,919	138,215	127,256	133,255	100,979	41,042	12,983	9,130	16,838	778,850	
	Energji nga Hec-et Lokale levruar ne Rrjetin e Transmetimit (me ngritje)	59,687	29,705	75,556	68,977	67,556	54,066	14,241	4,573	3,325	3,956	381,643	
	Gjenerim KURUM (prodhues i pavarur)	44,271	41,090	36,363	34,900	45,761	26,674	26,849	13,613	12,370	12,028	293,918	
	HEC ASHTA (prodhues i pavarur Kontr.me OSHEE)	35,169	30,291	23,019	20,043	26,672	20,513	18,998	21,314	19,370	16,195	231,585	
	HEC BANJE (prodhues i pavarur)	19,006	17,988	18,262	12,703	7,780	20,938	10,916	7,489	5,847	9,330	130,259	
	HEC MOGLICE (prodhues i pavarur)	30,090	33,919	31,602	23,209	12,164	37,614	14,178	7,089	16,866	20,311	227,042	
	HEC PESHQESH-TI/637 (prodhues i pavarur)	13,532	6,558	13,089	12,741	9,140	5,257	2,507	1,463	1,281	2,232	67,800	
	HEC FANGU (prodhues i pavarur)	41,733	21,699	32,666	20,161	17,504	6,123	4,155	8,673	17,951	12,041	182,705	
Importi(Hyre) nga Linjat e Interkonjeksionit	51,364	63,212	131,284	135,881	106,085	113,475	235,733	250,341	268,859	288,745	1,644,980		
DALJE	Humbjet ne Transmetim	25,216	17,110	19,532	18,151	22,863	16,197	16,646	15,842	13,113	11,825	176,495	8,264,088
	Transmetuar ne Rrjetin e Shperndarjes	637,223	605,449	547,681	496,756	446,949	452,455	575,038	576,018	487,171	473,023	5,297,762	
	Klientene treg te hapur (TL)	38,979	25,586	32,684	59,843	80,042	76,540	57,032	48,438	47,465	43,669	510,276	
	Eksporti (Dale) nga Linjat e Interkonjeksionit	387,717	265,662	250,922	199,681	364,397	222,009	125,007	142,789	184,860	136,512	2,279,556	
Humbjet ne Transmetim	25,216	17,110	19,532	18,151	22,863	16,197	16,646	15,842	13,113	11,825	176,495		
Humbjet ne Transmetim ne %	2.32	1.87	2.30	2.34	2.50	2.11	2.15	2.02	1.79	1.78	2.14		

Burimi: OST sha

PARAQITJA SKEMATIKE E FLUKSEVE TE ENERGJISE NE SISTEMIN ELEKTRO-ENERGJITIK SHQIPETAR VITI 2023 (MWh) (10-mujori)

Energji e levruar nga H/C-et e KESH sha	Energji e levruar nga prodhuesit me përparesi lidhur ne TL (kontrate me OSHEE)	Energji e levruar nga H/C ASHTA lidhur ne TL (kontrate me OSHEE)	Energji e levruar nga H/C et Priv/konc lidhur ne TL (Prodhuar ne treg te hapur)						Energji ne hyrje nga Interkoneksioni
4,325,307	776,109	231,584	Kurum	Banje	Moglice	Fanga	Peshqesh	Qami	1,644,980
			293,918	130,259	227,041	182,705	67,800	2,744	



LEGJENDA	
FSHU	FURNIZUES I SHËRBIMIT UNIVERSAL
FMF	FURNIZUES I MUNDËSISË SË FUNDIT

Burimi OST sha

PRODHIMI GJATE VITI 2023 NGA CENTRALET E LIDHURA NE RRJETIN E TRANSMETIMIT (MWh)														
HECET DHE KAPACITETI	MW	SUBJEKTI	LIDHJA	JANAR	SHKURT	MARS	PRILL	MAJ	QERSHOR	KORRIK	GUSHT	SHTATOR	TETOR	10-M 2023
Hec "Fishe"	500.000	"KESH" sha	220 kV											
Hec "Koman"	600.000		220 kV	665,048	599,427	350,763	318,558	488,334	381,563	405,103	455,548	377,610	283,354	4,325,307
Hec "V. Dejes"	250.000		220 kV											
Hec Vloza	98.000		220 kV											
4,325,307														
Hec "Ulez"	25,200	"Kurum International" sha.	110 kV											
Hec "Shkopet"	24,000		110 kV											
Hec "Bistrica 1"	22,500		110 kV	44,271	41,090	36,363	34,900	45,761	26,674	26,849	13,613	12,370	12,028	293,920
Hec "Bistrica 2"	5,000		110 kV											
Hec "Peshqesh"	27,540		220 kV	13,532	6,558	13,089	12,741	9,140	5,257	2,507	1,463	1,281	2,232	67,800
Hec "Fanga"	74,600	220 kV	41,733	21,699	32,666	20,161	17,504	6,123	4,155	8,673	17,951	12,041	182,706	
Hec "Bajze"	73,000	110 kV	19,006	17,988	18,262	12,703	7,780	20,938	10,916	7,489	5,847	9,330	130,259	
Hec "Moglice"	184,000	111 kV	30,090	33,919	31,602	23,209	12,164	37,614	14,178	7,089	16,866	20,311	227,042	
Hec Qam-1	1,730	"Lajthia Invest" shpk	110 kV	592	126	659	702	430	83	3	68	58	23	2,744
904,471														
Hec "Ashta"	48,200	"Energi Ashta" shpk	110 kV	35,169	30,291	23,019	20,043	26,672	20,513	18,998	21,314	19,370	16,195	231,584
231,584														
Hec "Bishnica 2"	2,500	"HEC Bishnica 1.2" shpk	110 kV	1,152	670	1,405	1,312	1,203	819	414	234	174	243	7,627
Hec "Dardhe"	5,900	"Wenerg" shpk	110 kV						1,138	129	(12)			11,654
Hec "Truen"	2,500	"TRUEN" shpk	110 kV	2,658	941	2,284	2,731	1,626				12	147	
Hec "Ternove"	0,921	"TEODORI 2003" shpk	110 kV	932	1,241	1,325	1,305	1,204	590	(14)	(13)	(14)	(14)	6,542
Hec "Gjoric"	29,610	"DITEKO" shpk	110 kV	15,292	11,680	16,101	14,594	12,802	9,566	6,046	3,571	3,475	4,388	97,515
Hec "Slabinje"	13,800	"Power Elektrik Slabinje" shpk	110 kV	7,972	3,915	10,486	8,748	10,801	8,130	3,053	1,562	917	877	56,462
Hec "Bele 1"	5,000	"Euron Energy" shpk												
Hec "Topojan 2"	5,800	"Alb-Energy" shpk	110 kV	15,244	10,142	17,429	19,483	20,210	19,184	10,197	3,090	1,287	1,438	117,704
Hec "Bele 2"	11,000		110 kV											
Hec "Topojan 1"	2,900	"Energy" shpk	110 kV											
Hec "Orgjost 1 R"	4,800		110 kV											
Hec "Cernaleve 1"	2,300	"Energy partners Al" shpk	110 kV	1,460	641	2,173	2,546	2,939	1,897	365	(11)			12,205
Hec "Cernaleve 2"	2,800		110 kV											
Hec "Brape"	3,600	"C & S Construction Energy" shpk	110 kV	4,322	2,421	4,512	4,922	5,578	4,386	1,698	49	210	948	29,047
Hec "Rapani 1.2"	8,100		110 kV											
Hec "Rapani 3.4"	8,850	"C & S Energy" shpk	110 kV	4,572	2,559	4,428	4,241	3,756	2,931	1,109	380	42	529	24,547
Hec "Lypaz"	13,620	"Geo Spa.POWER" shpk	110 kV	4,658	2,372	5,536	6,303	9,142	5,906	2,374	831	518	734	38,374
Hec "Lengarice"	8,940	"Lengarica & Energy" shpk	110 kV	4,024	3,108	4,350	2,666	2,495	3,104	882	118	262	262	21,270
Hec "Lura 1"	6,540	"Erdat Lura" shpk	110 kV											
Hec "Lura 2"	4,020		110 kV	5,715	2,381	6,188	4,763	3,782	1,848	516	149			25,930
Hec "Lura 3"	5,660		110 kV									126	461	
Hec "Malla"	5,455	"Gjire Rec" shpk	110 kV	1,948	1,004	1,993	1,549	1,259	718	277	(15)	(7)	140	8,865
Hec "Prelle"	14,970	"Prelle Energy" shpk	110 kV	5,038	2,239	5,919	4,670	4,597	3,322	928	3	9	768	27,494
HEC Cemerica 1	0,488	"REJ ENERGV" shpk	110 kV											
HEC Cemerica 2	1,085		110 kV	2,005	1,277	2,343	1,691	1,956	1,795	302	(15)	(14)	(16)	11,323
HEC Cemerica 3	2,1		110 kV											
HEC TLK	4,47	"MC Inerte Lumzi"	110 kV	5,034	1,187	3,753	3,494	2,013	1,012	603	(19)	548	293	17,918
HEC Lumzi	11		110 kV											
Hec Dens	14,5	"Dens Power" shpk	110 kV	5,364	2,929	5,552	3,784	4,142	4,502	976	410	281	292	28,232
Llenga 1	1,73	"HEC LLËNGE" sh.p.k	110 kV											
Llenga 2	0,3		110 kV	918	460	1,476	1,581	1,712	1,347	428	(5)			7,978
Llenga 3	1,5		110 kV									7	54	
HEC Shpella Poste	2,3	"Liria Energi" shpk	110 kV	966	516	1,466	1,344	1,020	774	340	218	116	161	6,921
HEC Germani 1	4,8	"SAGA-MAT" shpk	110 kV	1,832	551	1,764	1,423	913	1,334	622	17			8,602
HEC Germani 2	1,5		110 kV									5	141	
HEC Lashkiza 1	4,074	"HEC Lashkiza" shpk	110 kV	1,390	597	1,116	695	589	195	21	(6)	(6)	(3)	4,587
HEC Lashkiza 2	0,882		110 kV											
Hec Seta 1-2	7,454	"Hydro Seta" sh.p.k	110 kV											
Hec Seta 3	2,722		110 kV	5,190	2,577	5,540	4,838	4,150	2,090	392	(4)			25,070
Hec Seta 4	4,724		110 kV									(11)	308	
HEC Darsi 1,2,3	12,7	"Hetz Energy" shpk	110 kV	4,417	1,634	3,835	3,285	2,181	1,636	1,347	21	133	656	19,145
HEC Egnatia	5,1	"REMI" shpk	110 kV	1,862	715	1,453	1,566	1,340	915	519	286	109	108	8,873
HEC Saka & Zais/684	14,96	"SEKA Hydropower" shpk	110 kV	7,858	4,206	10,123	8,762	8,786	6,198	2,387	612	411	1,583	50,928
HEC ARSTI	3,13	"Hec Arsti" shpk	110 kV	2,088	1,158	1,885	1,844	1,322	845	129	(4)	62	288	9,617
HEC KASKADA GJADER T1/344	24,9	"S.P.E. Gjader" shpk	110 kV	3,766	1,252	3,542	3,193	1,414	412	62	69	101	998	14,810
HEC-n Dragobia&Cerezi/686	21,9	"Dragobia Energy" shpk	110 kV	8,543	4,249	7,670	7,383	14,533	8,961	3,504	1,411	258	573	57,091
HEC Veleçina 1,2	13,9	"Kalisi Hydropower" shpk	110 kV	2,425	1,168	1,899	1,840	5,361	5,342	1,433	(12)	45	279	19,780
				128,643	69,793	137,555	126,555	132,825	100,896	41,039	12,915	9,074	16,615	776,109

PRODHIMI GJATE VITI 2023 NGA CENTRALET E LIDHURA NE RRJETIN E SHPËRNDARJES (MWh)														
HECET DHE KAPACITETI	MW	SUBJEKTI	LIDHJA	JANAR	SHKURT	MARS	PRILL	MAJ	QERSHOR	KORRIK	GUSHT	SHTATOR	TETOR	10-M 2023
Hec "Lanabregas"	5,000	"Hec Lanabregas" sha	35 kV	1,990	1,984	2,352	2,231	2,259	1,955	1,859	1,819	1,435	1,126	19,008
Hec "Lentis"	0,400	"EMIKEL 2003" sh.p.k	10kV	270	216	282	276	281	274	206	125	62	100	2,093
Hec "Cerezi/686"	0,200		10kV	88	87	108	100	101	86	22	-	0	0	592
Hec "Smokthine"	9,200	"Albania Green Energy" sh.p.k	35 kV	4,172	4,461	5,923	3,327	3,147	2,999	2,509	2,078	1,734	1,746	30,096
Hec "Bulqize"	0,600		10kV	124	93	158	153	166	130	98	72	61	60	1,114
Hec "Homesh"	0,395	"Hec Arsti" shpk	10kV	68	46	57	52	55	53	17	-	0	0	346
Hec "Zerqan"	0,625		6kV	104	131	174	174	165	128	114	98	90	99	1,278
Hec "Arras"	4,800	"Hec Arsti" shpk	20kV	2,205	2,202	2,730	2,354	2,232	1,174	221	-	57	320	13,494
Hec "Orgjost"	1,200		10kV	700	625	724	753	671	613	413	134	6	61	4,700
Hec "Lekbibaj"	1,400	"Hec Arsti" shpk	10kV	686	651	855	774	767	715	679	331	170	227	5,855
Hec "Dukagjin"	0,640		10kV	129	131	143	136	135	80	282	270	197	243	1,745
Hec "Marjan"	0,200	"Hec Arsti" shpk	10kV	-	-	-	-	-	-	-	-	-	0	-
Hec "Lozhan"	0,100		10kV	44	26	59	63	55	27	-	-	-	0	274
Hec "Barmash"	0,830	"Balkan Green Energy" shpk	10kV	138	209	233	137	117	118	62	-	0	0	1,014
Hec "Treske 2"	0,250		10kV	86	86	124	99	95	83	25	-	0	0	598
Hec "Nikolice"	0,700	"Balkan Green Energy" shpk	10kV	159	112	202	222	255	198	135	70	60	42	1,455
Hec "Funares"	1,920		10kV	852	849	821	868	835	738	232	-	68	218	5,480
Hec "Lumk"	0,200	"Hec Arsti" shpk	10kV	143	134	135	144	139	107	-	-	0	0	802
Hec "Kerpice"	0,420		6kV	70	47	59	57	64	72	66	73	70	60	638
Hec "Ujanik"	0,630	"Hec Arsti" shpk	10kV	132	89	172	140	110	102	47	0	13	20	825
Hec "Borsh"	0,250		6kV	62	113	78								

Hec'Shemri	1.000	"Erald Energjitik" shpk	10	454	123	438	440	242	190	-	-	0	0	1.887
Hec'Maqulle	0.280		10kV	247	163	297	293	230	160	2	-	0	8	1.399
Hec'Kryezi 1"	0.600	"Bekim Energjitik" shpk	10kV	545	212	516	555	298	68	-	-	0	32	2.225
Hec'Selidite	2.000	"Selidite" shpk	35kV	795	474	1.131	1.022	810	499	187	124	42	36	5.119
Hec'Carshove	1.500		10kV	408	404	460	307	304	299	64	0	6	25	2.278
Hec'Ura e Dautit	1.200	"ERMA MP" shpk	10kV	1.411	1.059	1.609	1.015	946	1.150	190	17	36	62	7.493
Hec'Gzavesh	0.500	"Doshu Energy" shpk	10kV	562	298	-	-	-	-	-	-	0	0	660
Hec'Koka 1"	3.200	"Snow Energy" shpk	35kV	573	312	1.015	1.095	666	680	230	120	1	1	4.696
Hec'Stravaj	3.600	"Stravaj Energy" shpk	35kV	1.664	897	1.934	1.725	1.182	844	305	116	55	216	8.938
Hec'Picar 1"	0.200	"Peshku Picar 1" shpk	6kV	67	96	83	63	52	40	36	25	15	5	481
Hec'Verop	1.520	"Hydro Salilari Energy" shpk	35kV	297	190	270	244	50	149	70	-	0	0	1.271
Hec'Martanesh	10.500	"Albanian Power" shpk	35kV	2.242	1.353	3.360	2.833	2.147	2.172	459	-	127	312	15.005
Hec'Verba 1,2"	5.000	"Hydro power Plant Of Korea" shpk	35kV	611	392	812	991	2.300	1.404	350	114	88	123	7.185
Hec'Fierra	1.680	"Hydro Borshi" shpk	35kV	843	700	1.009	870	793	679	562	520	420	365	6.762
Hec'Ostren i Vogel"	0.320	"Lu & Co Eco Energy" shpk	10kV	91	85	107	108	111	93	81	64	54	51	844
Hec'Kozel	0.500		10kV	101	48	72	133	157	134	-	-	0	0	646
Hec'Helmas 1"	0.800	"E.T.H.H." shpk	10kV	209	118	253	352	341	213	16	-	0	0	1.502
Hec'Helmas 2"	0.500		10kV	103	71	132	157	186	160	18	-	0	0	826
Hec'Qafzeze"	0.400	"Caushi Energy" shpk	10kV	396	282	459	420	422	400	67	32	56	46	2.579
Hec'Trebata	1.775	"S.A.G.L.E.Kompani" shpk	10kV	654	321	712	753	593	243	-	-	0	0	3.276
Hec'Mollaj	0.600	"Energi Xhuci" shpk	10kV	-	-	76	59	161	163	-	-	68	0	527
Hec'Tucsp	0.400	"Tucsp" shpk	10kV	272	268	299	3	300	270	255	215	218	238	2.327
Hec'Treska4"	3.600		35kV	1.298	911	1.358	1.035	1.025	975	440	296	216	223	7.779
Hec'Treska3"	0.300	"Hec-Treske" shpk	35kV	206	134	216	158	161	154	65	44	34	31	1.204
Hec'Treska 2T"	0.620		35kV	450	234	343	258	256	223	101	65	48	54	2.030
Hec'Sotire1 & 2"	2.200	"Hydro Energy Sotire" shpk	35kV	714	312	606	507	634	913	505	95	7	6	4.300
Hec'Shutine	2.400	"Shutina energi" shpk	10kV	427	239	584	549	261	113	-	-	0	139	2.312
Hec'Çkrez 1,2"	0.660	"Zall Herri Energy 2011" shpk	6kV	289	273	307	298	200	406	398	392	367	395	3.324
Hec'Qarr	1.000	"Hec Qarr & Kaltaj" shpk	35kV	764	373	585	327	282	286	131	142	172	134	3.296
Hec'Blisak	1.300	"Bardhagjani" shpk	6kV	645	436	595	423	333	209	149	-	0	0	2.791
Hec'Shales	1.080	"Gjoka Konstruksion Energi" shpk	25kV	-	-	316	323	245	161	66	3	0	1	1.116
Hec'Strelec	1.174		35kV	405	367	916	802	557	727	98	3	0	13	3.888
Hec'Shpile Postate	0.400	"Sarrolli" sh.p.k	10kV	117	75	179	214	111	127	44	6	13	13	900
Hec'Bicaj	3.100	"EN-KU" sh.p.k	10kV	-	-	-	-	-	-	-	-	0	0	-
Hec'Leskovik 1"	1.072		10kV	41	43	49	46	42	39	24	-	0	0	284
Hec'Leskovik 2"	1.100	"Maksi Elektrik" sh.p.k	10kV	51	55	62	59	63	59	35	-	0	0	384
Hec'Orenje	0.875	"Juma" sh.p.k	10kV	250	201	191	193	163	109	-	-	0	0	1.106
Hec'Tamare	0.750	"WTS Energy" shpk	10kV	-	-	-	-	-	-	-	-	0	0	-
Hec'Benë	1.000	"Marjaka" shpk	6kV	163	124	162	163	155	50	-	-	0	11	829
Hec'Vithkuq 2				-	879	-	-	-	1.226	306	166	167	101	2.845
Hec'Vithkuq1	2.715	"Favina 1" shpk	35/10kV	1.585	-	-	1.408	1.257	-	-	-	-	-	4.250
Hec'Seles	1.400	"Selca Energy" shpk	10kV	615	506	575	788	1.149	882	270	218	104	329	5.437
Hec'Kumbull-Merkurli	0.830	"DN & NAT Energy" shpk	6kV	171	54	230	207	346	100	-	-	0	42	1.150
Hec'Sasaj	8.600	"Enego - Sas" shpk	35kV	2.757	2.333	3.041	2.471	2.355	1.711	924	920	767	925	18.203
Hec'Tervol	10.600	"Hec i Tervolli" shpk	35kV	3.704	1.461	4.999	4.757	3.025	2.556	1.017	507	250	654	22.930
Hec'Radove	2.500	"MTC Energy" shpk	10kV	1.213	1.053	1.184	737	765	918	335	183	170	223	6.780
Hec'Gushpat 1"	0.840	"Gushpat Energy" shpk	10kV	721	511	496	575	491	341	176	70	30	100	3.509
Hec'Gushpat 2"	0.830		10kV	817	563	617	653	542	375	144	63	54	138	3.967
Hec'Bistrica 3"	1.570	"Bistrica 3 Energy" shpk	6kV	477	42	-	13	605	658	559	418	564	565	3.902
Hec'Hardhas 1"	1.710	"Komp Energy" shpk	6kV	2.102	1.064	1.732	1.692	1.326	667	605	57	0	102	9.345
Hec'Perrollaj	0.500	"Fatumi" shpk	10kV	145	39	86	137	68	-	-	-	0	0	474
Hec'Kosheraj	0.620	"Koshetri Energy" shpk	10kV	296	136	260	210	171	182	80	34	35	64	1.377
Hec'Kacaj	3.870	"Kis-Bio-Energi" shpk	20kV	483	78	927	628	927	470	35	140	10	32	3.729
Hec'Lena 1"	1.950		35kV	-	-	-	-	-	-	-	-	-	-	-
Hec'Lena 2"	2.300	"Gama Energy" shpk	35kV	950	444	1.354	1.284	868	849	99	-	27	-	5.904
Hec'Lena 2A"	0.250		35kV	-	-	-	-	-	-	-	-	-	-	-
Hec'Driza	3.408	"Mesopotam Energy" shpk	35kV	449	304	363	281	234	159	113	70	8	0	1.983
Hec'Strelea 1,2,3	5.349	"Strelca Energy" shpk	35kV	786	697	1.537	1.749	2.563	1.758	529	261	150	252	10.282
Hec'Ujanik 2"	2.500	"HP Ujaniko Energy" shpk	35kV	815	431	904	526	414	554	61	-	0	34	3.739
Hec'Nishove	1.360	"Nishova Energy" shpk	35kV	70	64	59	62	60	10	-	-	0	0	324
Hec'Shinka	1.300	"Peparimi SK" shpk	10kV	476	391	397	255	159	93	-	-	0	1	1.772
Hec'Ballenje	1.900	"Ballenje Power Martanesh" shpk	35kV	483	187	646	606	409	489	70	-	0	0	2.890
Hec'Gavran 1"	0.998	"Gavran Energy" shpk	35kV	444	171	431	413	283	200	58	-	0	13	2.013
Hec'Gavran 2"	1.215	"Gavran Energy" shpk	35kV	318	127	316	351	246	154	105	22	0	3	1.642
Hec'Kasollet e Selces 1"	4.000	"Xhango Energy" shpk	35kV	851	543	1.327	1.044	1.409	1.018	389	238	187	215	7.219
Hec'Holta Kabash	2.200		25kV	-	-	-	-	-	-	-	-	-	-	-
Hec'Holta Porocan	3.300	"HEC Kabash Porocan" shpk	35kV	1.324	694	1.762	1.414	1.183	974	515	214	122	245	8.448
Hec'Lasen 1"	0.315		35kV	93	59	89	67	34	-	-	21	0	0	363
Hec'Ura e Fanit	1.000	"Aven As Eneraji" shpk	35kV	563	510	577	547	538	532	538	532	466	305	5.109
Hec'Gorice	1.747	"THE BLUE STAR" sh.p.k	35kV	684	423	1.117	966	671	721	113	-	0	0	4.695
Hec'Kabash 1&2"	5.800	"Univers Eneraji" shpk	35kV	1.078	264	1.017	993	409	5	-	-	0	88	3.854
Hec'Tucez 2"	1.7	"DUKA T2" shpk	35kV	343	348	405	689	398	324	250	203	230	262	3.453
Hec'Dobrenje Tomorrice	2.4	"DAAB Energy Group" shpk	35kV	346	242	336	266	228	232	104	25	65	150	1.995
Hec'Radzoll	0.765	"Hydro Vizion shpk (I pa licenc nga ERE)"	35kV	144	116	287	357	409	253	56	17	20	16	1.756
Hec'Dragostenje	3.1	"HEC4 Dragostenje" shpk	35kV	2.328	867	3.054	3.107	3.125	2.298	389	-	64	338	15.571
Hec'Stebleve	3.4	"PURE ENERGY STEBLEVA" shpk	35kV	283	107	451	480	411	234	18	-	0	0	1.984
Hec'Zerze 1"	0.55		35kV	750	477	917	821	527	630	185	82	50	62	4.500
Hec'Zerze 2"	1.315	"EnRel Hydro" shpk	35kV	-	-	-	-	-	-	-	-	-	-	-
Hec'Shëngjon 1"	0.651		35kV	411	237	393	336	276	158	49	-	9	0	1.869
Hec'Shëngjon 2"	0.356	"EDIANI" sh.p.k.	35kV	-	-	-	-	-	-	-	-	-	-	-
Hec'Blac	1.3	"BLAC ENERGY" sh.p.k	25kV	46	13	56	93	386	93	-	-	0	0	686
Hec'Qarrishit	0.3	"IDI-2005" SHPK	35kV	148	50	166	195	225	177	59	-	0	0	1.019
Hec'Vendresh	0.456	"HP VENDRESH ENERGY" SHPK	35kV	-	-	-	6	18	23	3	-	0	0	49
Hec'Antena	1.105	"DERBI-E" shpk	35kV	308	50	402	305	178	94	121	-	0	0	1.457
Hec'Kamenica	0.973	"HP Kamenica shpk"	10	374	186	370	370	397	382	118	24	69	58	2.348
Hec'Oytze	0.9	Mus hec Oytze	10	223	155	275	288	384	310	137	55	45	36	1.907
Hec'Marjan Gura e Vesheve	0.63	Marinda Shpk	10	193	71	135	159	278	246	98	28	3	1	1.212
Hec'Skatine	2.677	Skatina Hec Shpk	10	750	252	646	960	422	254	68	5	10	23	3.389
Hec'Kavariet	0.2	ABV Konstruksion Shpk	10	54	59	64	64	59	47	37	31	29	14	459
Hec'Letaj	0.54	As-Tre Shpk	10	136	69	138	131	86	106	25	-	18	36	744
Hec'Nise	2.133	MP-HEC Shpk	35	131	91	379	231	242	196	52	28	36	48	1.434
Hec'Meshurdhe	1.8	SIMA-Com Shpk	10	998	523	1.035	924	568	252	3	8	20	192	4.523
Hec'Thanez	1.95	AFRIMI K Shpk	35	896	345	1.099	1.138	501	586	75	-	0	89	4.729
Hec'OSOIE	1.9	OSOJA HPP shpk	35	1.365	779	1.206	771	706	1.001	278	176	257	78	6.616
Hec'Voskopje	1.9	FAVINA 1 shpk	35	995	491	875	622	569	718	213	108	112	110	4.813
Hec'Nderfishus"	1.34	SGD Energy shpk	35	248	102	347	321	231	266	47	-	0	0	1.562
Hec'Rreshen	0.38	Nikoli Energy shpk	10	132	101	143	137	111						

Hec "Sheqani"	2.000	Irrarba Energji shpk	10	329	246	310	321	286	224	140	-	0	131	1.988
Hec "Dobrunje"	0.840	W.T.S. Energy shpk	10	261	250	319	319	466	220	63	46	0	102	2.046
Hec "Muras"	2	Matook Co shpk	10	1.004	620	1.432	1.304	1.336	436	116	56	0	256	6.560
Hec "Trojet"	0.9	Trojet Energji shpk	10	325	267	572	536	460	258	30	-	22	6	2.476
Hec "Dren"	0.85	AST TRF shpk	35	270	93	313	259	147	124	28	-	2	15	1.261
Hec "Kamcan"	1.86	IGI 2005 shpk	35	970	349	996	991	729	464	206	-	0	68	4.773
Hec "Vardar"	1.97	Gerri shpk	35	1.564	1.262	1.622	1.566	1.638	1.581	620	-	0	0	9.653
Hec "Staves"	6.5	Kola Eriti Staves shpk	35	4.281	2.445	4.872	4.223	3.054	2.599	1.041	243	107	489	23.353
Hec "Kalis"	2.13	ERDY Energy shpk	35	1.234	954	1.346	1.264	1.061	689	300	142	71	203	7.262
Hec "Gjinar"	0.83	Erdi Gas shpk	10	151	90	170	202	125	138	80	33	19	32	1.039
Hec "Backa 1"	3.36	Kroi Mbret shpk	35	2.147	1.322	2.587	1.781	1.711	1.722	223	-	0	0	11.493
Hec "Drenj"	2.28	Dani Ties shpk	35	283	132	371	443	299	268	85	17	16	34	3.940
Hec "Zall Xhusho"	4.7	Hec Zall Xhusho	35	892	376	883	749	637	-	-	-	0	28	3.565
Hec "Pisha"	1.9	Green TECH energy systems	35	159	119	251	340	115	11	44	-	0	0	1.040
Hec "Lingjancat & 2"	2.2	"Re-Energji" shpk	35	643	386	768	574	416	296	109	44	61	285	3.582
Hec "Gari i Zi"	1.7	"Aris Albania" shpk	35	370	143	442	324	270	226	58	-	0	44	1.877
Hec "Drita"	1.98	"Brecani R.O.S.P." shpk	20	1.139	824	1.249	1.112	1.411	1.206	418	129	137	190	7.815
Hec "EME"	0.45	Hec EME shpk		205	109	208	161	115	46	5	-	0	0	849
Hec "Terfort"	1.98	"Hec TERFOJA" sh.p.k		810	619	698	917	898	747	344	132	118	181	5.465
Hec "Borje Lura 1"	1.3	"AGETA" sh.p.k		202	77	340	400	564	228	48	-	0	14	1.893
Hec "Mali"	1.49	"TRANA ENERGIJI" sh.p.k		1.107	943	1.331	1.303	1.267	898	953	883	953	862	10.501
Hec "Shelli"	1.518	"ARIS ALBANIA" SHPK		-	526	554	199	171	96	-	-	0	0	1.547
Hec "Duziane"	1.518	"ARIS ALBANIA" SHPK		-	326	404	550	539	476	115	-	0	74	2.485
Hec "Vokopola"				-	-	-	21	37	7	4	6	0	0	75
Hec KRONZ				-	-	-	-	-	325	51	8	3	73	461
				-	-	-	-	-	-	57	83	0	50	170
				117.917	76.392	135.008	123.795	116.647	94.762	38.440	18.417	14.758	19.335	75.451
										36.581	35	16.597	80	

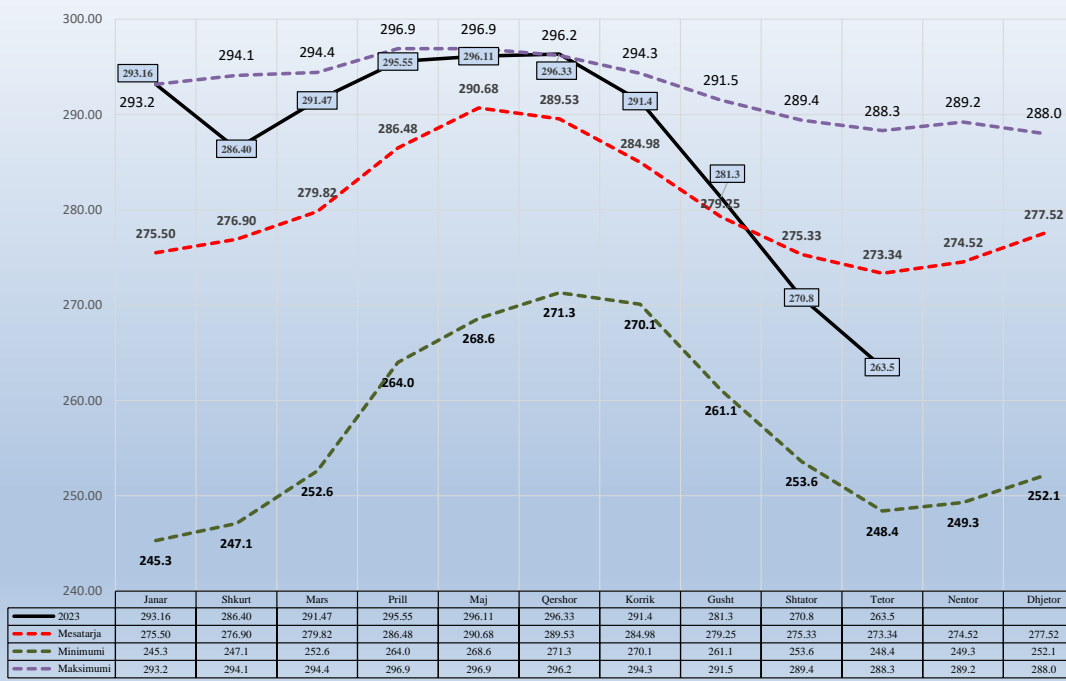
PRODHIMI GJATE VITIT 2023 NGA CENTRALET FOTOVOLTAIKE TE LIDHURANE RRJETIN E SHPERNDARIES (MW)														
CENTRAL FOTOVOLTAIK		MW	SHIFRETI	JANAR	SHKURT	MARS	PRILL	MAY	QERSHOR	KORRIK	GUSHT	SHTATOR	TEZOR	10-NI 2023
Semur 2	2	"SEMANTSHIN" sh.p.k	35 kV	190	288	283	394	402	398	458	416	317	253	3.400
Topojë 1	2	"SONNE" sh.p.k	35 kV	189	286	282	393	400	393	457	419	316	253	3.387
Topojë 2	2	"AED SOLAR" sh.p.k	35 kV	192	283	281	393	399	391	455	417	315	256	3.382
Topojë (Sheq Marinas)	2	"AGE SUNPOWER" sh.p.k	35 kV	187	285	281	392	399	392	457	419	317	253	3.382
Topojë (Sheq Marinas) 2	2	"SEMAN SUNPOWER" sh.p.k	35 kV	199	289	287	407	411	397	462	423	320	255	3.450
Semur lodur	2	"SEMANTISOLAR" sh.p.k	35 kV	201	293	292	391	385	372	438	411	315	281	3.379
ES 2019 sh.p.k	2	ES 2019 sh.p.k	35 kV	221	319	352	431	428	413	487	461	360	300	3.772
SMART WATT sh.p.k	2	SMART WATT sh.p.k	35 kV	221	323	349	434	425	411	488	462	369	299	3.781
Tren Bilisht	2	"RTS" sh.p.k	35 kV	215	303	315	290	293	349	472	387	319	305	3.248
STATKRAFT Renewbles alban PV Lundruas barje	2	"STATKRAFT"	35 kV	77	126	167	197	178	181	259	295	221	157	1.858
Pv-Flina	2	"AIE" sh.p.k	10 kV	187	291	383	459	480	464	534	471	361	333	3.964
Kruca Photovoltaic Park Shpk/920	2	Kruca Photovoltaic Park Shpk	35 kV	195	306	316	291	258	365	461	423	343	337	3.280
NTSP Shpk/944	2	NTSP Shpk	35 kV	204	304	300	288	255	361	453	418	331	337	3.251
Sun Beat System Shpk/921	2	Sun Beat System Shpk	35 kV	199	307	312	293	257	359	461	423	342	335	3.288
Tren Sun System Shpk/919	2	Tren Sun System Shpk	35 kV	204	312	319	290	258	359	440	426	344	338	3.290
ERENI SOLAR		ERENI SOLAR shpk 35 kv	35 kV	-	-	-	-	456	377	482	469	383	403	2.569
GREEN ENERGY BILISHTI		GREEN ENERGY BILISHTI SHPK 35 kv	36 kV	-	-	-	-	567	467	589	537	432	391	2.983
Total				2.883	4.314	4.520	5.340	6.249	6.449	7.854	7.276	5.706	5.086	55.678
EZ-5 Solar Park	10	EZ-5 Solar Park	35 kV	364	564	698	970	965	1.046	1.223	1.021	757	584	8.192
EZ-5 Solar Park		EZ-5 Solar Park	35 kV	362	567	706	839	993	1.060	1.257	1.109	770	612	8.274
ALBSOLAR Shpk													402	402
Tot ne treg te lire				725	1.131	1.404	1.808	1.958	2.105	2.480	2.131	1.537	1.598	16.868
														56.080
														72.546
														7.049.002
Kapaciteti Instaluar i gjithe prodhuesve				3.609	5.445	5.924	7.149	8.207	8.554	10.334	9.407	7.233	6.684	72.546

NIVELI FIERZES 1991-2023

	Janar	Shkurt	Mars	Prill	Maj	Qershor	Korrik	Gusht	Shtator	Tetor	Nentor	Dhjetor
1991	254.4	260.8	268.6	279.9	293.4	296.1	294.0	291.5	289.4	288.3	288.8	285.1
1992	278.0	274.1	268.0	278.8	281.0	279.6	275.2	268.7	263.9	271.4	281.9	280.6
1993	275.2	265.3	264.7	278.5	280.5	277.3	271.0	261.1	253.6	249.9	255.6	270.2
1994	254.4	260.8	268.6	279.9	293.4	296.1	294.0	291.5	289.4	288.3	288.8	285.1
1995	253.8	260.3	262.5	275.3	289.0	288.7	284.5	282.2	288.2	283.8	279.9	287.5
1996	287.1	288.7	286.5	294.7	295.8	293.1	287.6	282.2	285.1	284.3	289.2	291.3
1997	289.4	284.5	281.7	285.2	294.1	292.0	287.0	280.0	272.9	272.4	270.8	277.2
1998	273.7	270.0	265.2	278.9	288.1	287.4	281.8	277.6	276.0	277.1	279.0	277.1
1999	272.7	275.6	281.5	290.5	295.9	293.3	288.3	279.5	271.0	257.6	263.6	276.9
2000	276.4	276.7	276.8	286.9	286.6	280.1	273.5	267.5	261.6	248.4	249.3	252.1
2001	253.6	258.2	275.1	282.9	287.6	283.8	273.7	271.1	269.2	263.6	263.2	252.1
2002	245.3	247.1	252.6	264.0	268.6	271.3	270.1	267.8	274.3	286.1	285.3	284.0
2003	291.1	289.5	286.3	287.0	292.3	290.3	285.9	280.8	276.0	282.6	285.6	283.3
2004	284.7	290.8	293.4	296.0	296.2	296.2	293.1	286.3	281.1	280.0	286.1	288.0
2005	281.2	281.5	293.3	296.1	295.6	294.1	286.7	277.2	266.5	256.9	253.6	279.0
2006	283.5	288.6	294.4	295.9	296.5	295.9	293.8	290.2	285.3	278.7	266.2	256.2
2007	256.1	263.7	272.0	276.8	276.8	274.8	268.5	263.6	261.8	261.1	275.8	282.1
2008	285.1	289.7	290.9	295.5	295.3	295.7	294.3	288.6	283.9	280.9	285.2	286.5
2009	283.6	281.8	283.4	292.5	293.7	292.4	288.0	281.2	276.2	271.6	266.3	280.1
2010	290.1	289.2	293.9	296.0	296.3	294.4	291.8	288.6	284.9	285.2	284.3	287.5
2011	281.6	274.1	275.0	276.6	281.0	286.1	284.7	279.0	273.9	268.2	261.6	264.5
2012	265.8	274.1	262.0	280.2	293.4	294.4	288.4	280.4	261.4	261.6	269.0	276.6
2013	278.3	274.1	294.8	296.9	296.9	294.2	289.7	283.6	280.8	281.4	282.5	276.1
2014	275.1	274.1	274.6	285.3	292.9	294.9	291.7	286.8	285.5	285.0	284.8	286.3
2015	288.7	274.1	292.2	296.3	296.1	293.3	287.5	280.1	272.1	275.4	278.9	275.9
2016	289.9	274.1	291.8	296.5	296.2	295.6	290.5	285.4	283.3	288.4	288.9	281.6
2017	271.5	274.1	280.9	278.7	281.6	272.4	270.2	268.0	271.0	264.6	269.6	289.9
2018	289.7	274.1	295.0	296.5	296.4	296.0	294.0	287.5	277.9	270.2	266.5	267.3
2019	267.3	274.1	272.7	279.9	289.9	292.7	287.6	278.5	274.2	268.6	273.2	275.6
2020	271.6	272.0	283.5	288.6	293.6	291.7	284.6	276.5	273.5	274.1	268.7	272.7
2021	291.7	294.1	292.6	294.3	296.7	291.7	282.7	274.3	271.3	267.7	267.8	275.1
2022	270.7	268.3	260.7	282.5	289.0	288.0	281.5	270.4	271.4	267.9	281.7	291.7
2023	293.2	286.4	291.5	295.6	296.1	296.3	291.4	281.3	270.8	263.5		

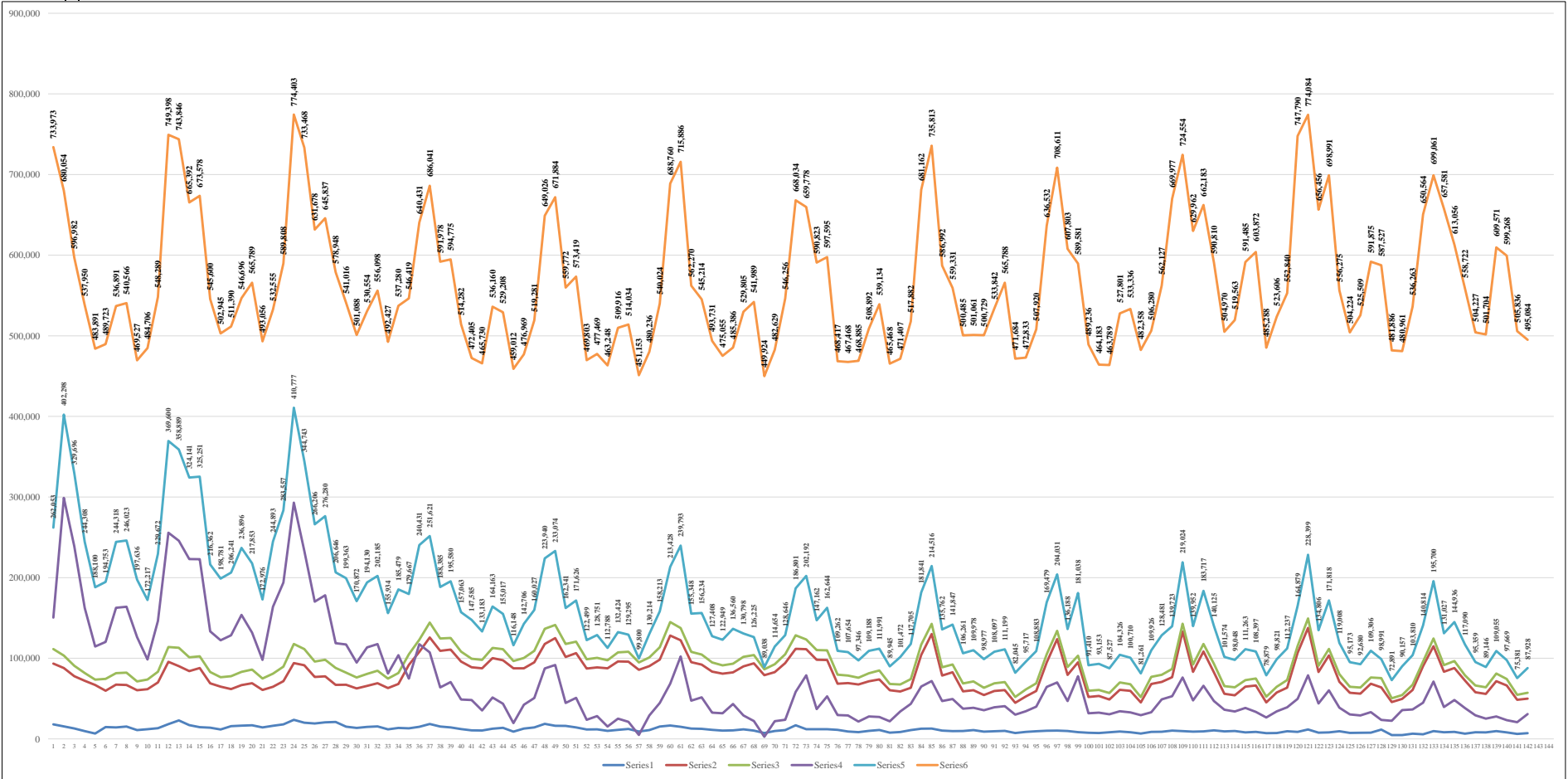
	Janar	Shkurt	Mars	Prill	Maj	Qershor	Korrik	Gusht	Shtator	Tetor	Nentor	Dhjetor
2023	293.16	286.40	291.47	295.55	296.11	296.33	291.4	281.3	270.8	263.5		
Mesatarja	275.50	276.90	279.82	286.48	290.68	289.53	284.98	279.25	275.33	273.34	274.52	277.52
Minimumi	245.3	247.1	252.6	264.0	268.6	271.3	270.1	261.1	253.6	248.4	249.3	252.1
Maksimumi	293.2	294.1	294.4	296.9	296.9	296.2	294.3	291.5	289.4	288.3	289.2	288.0

NIVELI FIERZES GJATE 2023 KRAHESUAR ME (Min,Maks dhe Mesataren historike) (m)



Burimi: OST sha

	2011	2012	2013	2014	2015	2016	2017	2018	2019	2020	2021	2022	2023
Humbjet teknike ne nenshtacionet e TL	18.074	18.494	19.441	19.441	19.441	19.441	19.441	19.441	19.441	19.441	19.441	19.441	19.441
Humbjet teknike në zonat e shpërndarjes	87.874	87.874	87.874	87.874	87.874	87.874	87.874	87.874	87.874	87.874	87.874	87.874	87.874
Humbjet teknike Totale	105.948	106.368	107.315	107.315	107.315	107.315	107.315	107.315	107.315	107.315	107.315	107.315	107.315
Humbjet jo-teknike Totale	50.538	50.538	50.538	50.538	50.538	50.538	50.538	50.538	50.538	50.538	50.538	50.538	50.538
Humbjet Totale	156.486	156.906	157.853	157.853	157.853	157.853	157.853	157.853	157.853	157.853	157.853	157.853	157.853
ENERGJI TOTAL NË OSSH	333.973	313.515	313.515	313.515	313.515	313.515	313.515	313.515	313.515	313.515	313.515	313.515	313.515

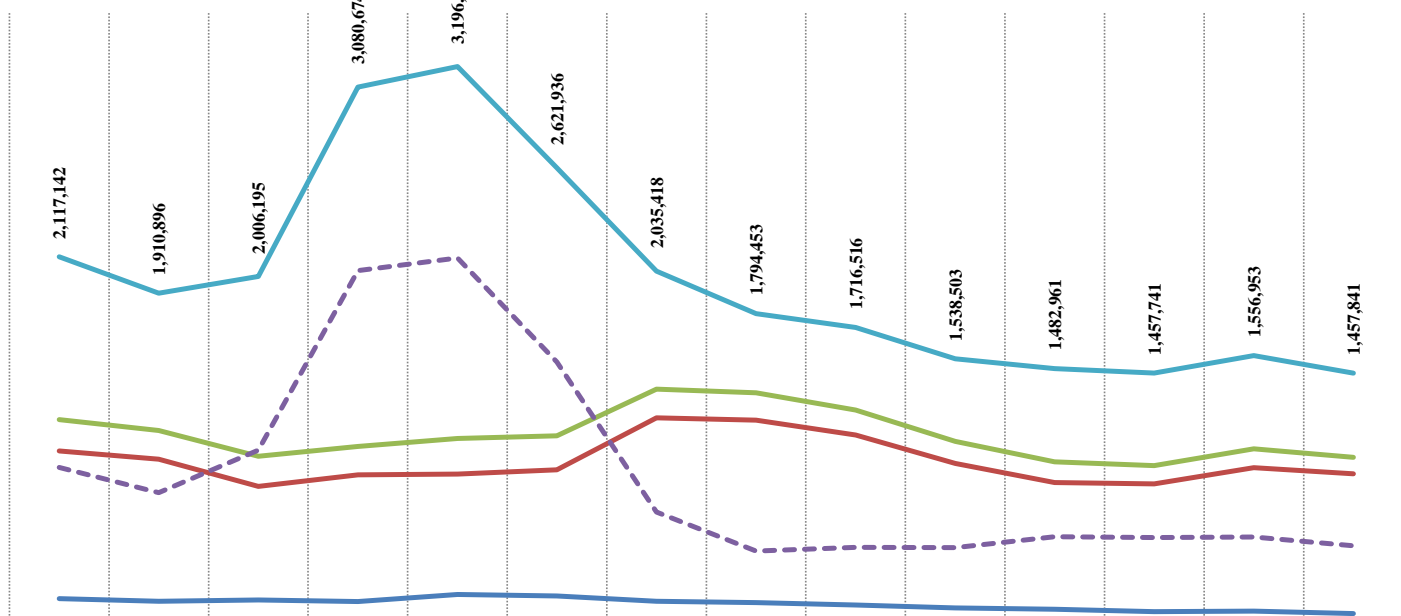


Burimi: OSSH sh / (OSHEE Group sha)

HUMBJET NE RRJETIN E SHPERNDARJES 2009-2023(MWh)

	2009	2010	2011	2012	2013	2014	2015	2016	2017	2018	2019	2020	2021	2022	2023 (10-M)
HUMBJE TEKNIKE NE TL (N/ST)	178,738	163,546	170,937	161,831	201,684	193,208	162,725	155,629	141,707	125,974	117,739	103,729	107,340	93,331	80,586
HUMBJE TEKNIKE NE ZONAT E OSSH	1,015,450	968,535	814,826	879,616	884,360	908,416	1,203,793	1,190,872	1,106,007	944,587	836,561	828,906	921,330	886,682	708,529
TOTALI I HUMBJEVE TEKNIKE OSSH	1,194,188	1,132,081	985,763	1,041,447	1,086,044	1,101,624	1,366,518	1,346,501	1,247,714	1,070,560	954,300	932,635	1,028,670	980,013	789,115
HUMBJE JOTOKNIKE OSSH	922,954	778,815	1,020,432	2,039,227	2,110,575	1,520,312	668,900	447,952	468,802	467,943	528,661	525,106	528,283	477,828	354,175
TOTALI I HUMBJEVE OSSH	2,117,142	1,910,896	2,006,195	3,080,674	3,196,618	2,621,936	2,035,418	1,794,453	1,716,516	1,538,503	1,482,961	1,457,741	1,556,953	1,457,841	1,143,290

HUMBJET NE RRJETIN E SHPERNDARJES 2009-2022(MWh)



	2009	2010	2011	2012	2013	2014	2015	2016	2017	2018	2019	2020	2021	2022
HUMBJE TEKNIKE NE TL (N/ST)	178,738	163,546	170,937	161,831	201,684	193,208	162,725	155,629	141,707	125,974	117,739	103,729	107,340	93,331
HUMBJE TEKNIKE NE ZONAT E OSSH	1,015,450	968,535	814,826	879,616	884,360	908,416	1,203,793	1,190,872	1,106,007	944,587	836,561	828,906	921,330	886,682
TOTALI I HUMBJEVE TEKNIKE OSSH	1,194,188	1,132,081	985,763	1,041,447	1,086,044	1,101,624	1,366,518	1,346,501	1,247,714	1,070,560	954,300	932,635	1,028,670	980,013
HUMBJE JOTOKNIKE OSSH	922,954	778,815	1,020,432	2,039,227	2,110,575	1,520,312	668,900	447,952	468,802	467,943	528,661	525,106	528,283	477,828
TOTALI I HUMBJEVE OSSH	2,117,142	1,910,896	2,006,195	3,080,674	3,196,618	2,621,936	2,035,418	1,794,453	1,716,516	1,538,503	1,482,961	1,457,741	1,556,953	1,457,841

Burimi: OSSH sha / (OSHEE Group sha)

Viti 2014	Te arketueshme	Faturuar 2014	arketimi per faturat e 2014		Arketimi per faturat e 2007-2013		Arketimi total	Te Arketueshme per energjine e faturuar ne vitin 2014	Ndryshimi i gjendjes se Llogarive te arketueshme gjate vitit 2014	Shuarje Detyrimesh me VKM nr 198, dt 03.04.2014
			5	7	6=5+7	9=(2-5)				
	71,374,447									
		2		5		7	6=5+7		9=(2-5)	10=(2-5-7-a)
Janar	72,385,326	4,899,949	3,593,288	295,782	3,889,070	1,306,661	1,010,880	0		
Shkurt	73,231,148	4,623,941	1,224,858	2,553,261	3,778,119	3,399,083	845,821	0		
Mars	73,905,562	4,645,564	3,226,836	744,315	3,971,150	1,418,729	674,414	0		
Prill	70,676,446	4,538,921	3,291,530	680,634	3,972,164	1,247,911	3,229,116	3,795,873		
Maj	71,544,530	4,190,118	3,345,044	374,413	3,719,457	845,074	868,084	(397,423)		
Qershor	72,209,337	4,025,464	3,065,523	295,134	3,360,657	959,941	664,807			
Korrik	72,816,893	4,097,547	3,184,902	305,088	3,489,991	912,644	607,556			
Gusht	73,694,774	4,299,885	3,115,141	311,467	3,426,607	1,184,744	877,881	(4,604)		
Shtator	72,527,145	4,065,705	3,343,188	1,069,912	4,413,100	722,518	1,167,630	820,235		
Tetor	72,630,240	4,280,796	3,647,110	457,224	4,104,334	633,686	103,095	73,367		
Nentor	72,771,144	4,504,528	3,459,192	904,432	4,363,624	1,045,336	140,904			
Dhjetor	71,406,047	4,985,556	4,273,473	2,077,180	6,350,653	712,083	1,365,097			
Total		53,157,974	38,770,084	10,068,842	48,838,927	14,387,890		4,287,448		

FATURIM-ARKETIMET DHE NDRYSHIMI I GJENDJES DEBITORE GJTE VITIT 2015 (000/LEKE)

Viti 2015	Te arketueshme	Faturuar 2015	arketimi per faturat e 2015		Arketimi per faturat e 2007-2014		Arketimi total	Te Arketueshme per energjine e faturuar ne vitin 2015	Ndryshimi i gjendjes se Llogarive te arketueshme gjate vitit 2015	Shuarje Detyrimesh
			5	7	6=5+7	9=(2-5)				
	71,406,047	2		5		7	6=5+7		9=(2-5)	10=(2-5-7-a)
Janar	65,787,460	2	58,385	5,560,203	5,618,588	(58,383)	5,618,586	0		
Shkurt	59,101,173	2	4,241,484	2,444,805	6,686,289	(4,241,482)	6,686,287	0		
Mars	53,303,725	2	4,663,802	1,133,648	5,797,450	(4,663,800)	5,797,448	0		
Prill	47,129,425	2	4,470,298	366,900	4,837,198	(4,470,296)	6,174,301	1,337,105		
Maj	40,663,646	2	4,234,873	504,756	4,739,629	(4,234,871)	6,465,778	1,726,151		
Qershor	36,200,965	2	4,081,633	309,420	4,391,053	(4,081,631)	4,462,681	71,630		
Korrik	31,391,091	2	4,246,167	372,576	4,618,743	(4,246,165)	4,809,874	191,133		
Gusht	26,213,833	2	4,481,964	354,383	4,836,347	(4,481,962)	5,177,258	340,913		
Shtator	21,220,540	2	4,700,033	293,262	4,993,295	(4,700,031)	4,993,293	0		
Tetor	21,053,851	4,683,924	4,541,794	308,818	4,850,612	142,130	166,689	0		
Nentor	21,726,696	4,991,543	4,020,208	298,490	4,318,698	971,335	672,845	0		
Dhjetor	22,570,251	5,872,243	4,750,948	277,740	5,028,688	1,121,295	843,555	0		
Total		15,547,727	48,491,589	12,225,002	60,716,591	32,943,862		3,666,932		

FATURIM-ARKETIMET DHE NDRYSHIMI I GJENDJES DEBITORE GJTE VITIT 2016 (000/LEKE)

Viti 2016	Te arketueshme	Faturuar 2016	arketimi per faturat e 2016		Arketimi per faturat e 2007-2015		Arketimi total	Te Arketueshme per energjine e faturuar ne vitin 2016	Ndryshimi i gjendjes se Llogarive te arketueshme gjate vitit 2016	Shuarje Detyrimesh
			5	7	6=5+7	9=(2-5)				
	68,803,189	2		5		7	6=5+7		9=(2-5)	10=(2-5-7-a)
Janar	69,383,532	5,987,971	11,010	5,396,619	5,407,628	5,976,962	580,343	0		
Shkurt	69,618,271	5,445,503	3,744,680	1,455,075	5,199,755	1,700,824	234,739	0		
Mars	69,927,158	5,513,517	4,673,435	531,195	5,204,630	840,082	308,887	0		
Prill	69,788,727	4,826,977	4,641,557	323,851	4,965,408	185,420	138,431	0		
Maj	67,042,795	4,835,733	4,504,256	276,918	4,781,174	331,477	2,745,932	2,800,490		
Qershor	67,501,589	4,525,728	4,203,847	245,816	4,449,663	321,881	458,794	0		
Korrik	68,121,673	5,241,459	4,390,083	231,293	4,621,375	851,376	620,084	0		
Gusht	68,364,412	5,309,834	4,799,986	267,109	5,067,095	509,848	242,739	0		
Shtator	68,350,354	4,844,483	4,650,851	207,690	4,858,541	193,633	14,058	0		
Tetor	68,499,705	4,834,638	4,480,371	204,001	4,684,378	354,383	149,357	0		
Nentor	69,372,496	5,235,378	4,175,054	188,533	4,363,587	1,061,324	872,791	0		
Dhjetor	70,720,061	6,410,681	4,854,705	208,411	5,063,116	1,555,976	1,347,565	0		
Total		63,012,893	49,129,839	9,537,411	58,667,251	13,883,054		2,800,490		

FATURIM-ARKETIMET DHE NDRYSHIMI I GJENDJES DEBITORE GJTE VITIT 2017 (000/LEKE)

Viti 2017	Te arketueshme	Faturuar 2017	arketimi per faturat e 2017		Arketimi per faturat e 2007-2016		Arketimi total	Te Arketueshme per energjine e faturuar ne vitin 2017	Ndryshimi i gjendjes se Llogarive te arketueshme gjate vitit 2017	Shuarje Detyrimesh
			5	7	6=5+7	9=(2-5)				
	70,720,061	2		5		7	6=5+7		9=(2-5)	10=(2-5-7-a)
Janar	71,449,571	6,192,711	2,680	5,460,521	5,463,201	6,190,031	729,510	0		
Shkurt	71,348,179	5,323,527	3,823,606	1,601,313	5,424,919	1,499,921	101,392	0		
Mars	70,863,923	5,141,318	4,963,971	664,534	5,628,505	177,347	484,187	0		
Prill	70,863,942	4,857,464	4,525,615	331,899	4,857,514	331,849	50	0		
Maj	70,398,535	4,667,810	4,599,520	533,697	5,133,217	68,290	465,407	0		
Qershor	70,787,603	4,675,924	4,055,720	231,137	4,286,856	620,204	389,068	0		
Korrik	71,320,868	5,435,009	4,599,634	302,110	4,901,744	835,375	533,265	0		
Gusht	71,661,546	5,635,939	4,996,203	299,058	5,295,261	639,736	340,678	0		
Shtator	71,152,686	4,824,463	5,046,489	286,834	5,333,323	222,026	508,860	0		
Tetor	71,047,597	4,902,445	4,759,610	247,923	5,007,534	142,834	105,089	0		
Nentor	72,031,524	5,527,306	4,313,657	229,722	4,543,379	1,213,649	983,927	0		
Dhjetor	72,848,682	6,347,229	5,153,618	376,452	5,530,070	1,193,611	817,158	0		
Total										

FATURIM-ARKETIMET DHE NDRYSHIMI I GJENDJES DEBITORE GJTE VITIT 2018 (000/LEKE)

Viti 2018	Te arketueshme	Faturuar 2018	arketimi per faturat e 2018		Arketimi per faturat e 2007-2017		Arketimi total	Te Arketueshme per energjine e faturuar ne vitin 2018	Ndryshimi i gjendjes se Llogarive te arketueshme gjate vitit 2018	Shuarje Detyrimesh
			5	7	6=5+7	9=(2-5)				
	72,848,682	2		5		7	6=5+7		9=(2-5)	10=(2-5-7-a)
Janar	72,669,803	5,939,299	62,280	6,055,898	6,118,178	5,877,019	178,879	0		
Shkurt	72,671,709	5,685,334	3,857,605	1,825,823	5,683,429	1,827,729	1,905	0		
Mars	72,336,005	5,680,352	5,325,171	690,885	6,016,056	355,181	335,704	0		
Prill	71,388,405	4,671,224	5,191,294	427,530	5,618,824	520,070	947,600	0		
Maj	70,904,609	4,731,173	4,839,352	375,617	5,214,970	108,179	483,797	0		
Qershor	71,142,033	4,976,161	4,395,221	343,516	4,738,737	580,940	237,425	0		
Korrik	71,320,917	5,403,874	4,895,796	329,195	5,224,991	508,078	178,883	0		
Gusht	71,608,055	5,805,751	5,141,751	376,861	5,518,612	664,000	287,139	0		
Shtator	71,254,995	5,047,859	5,088,650	312,269	5,400,919	40,791	353,061	0		
Tetor	70,741,012	4,975,893	5,162,026	327,849	5,489,875	186,133	513,982	0		
Nentor	71,270,659	5,318,350	4,317,124	471,580	4,788,703	1,001,226	529,647	0		
Dhjetor	71,896,707	6,625,289	5,579,121	420,120	5,999,241	1,046,168	626,048	0		
Total										

FATURIM-ARKETIMET DHE NDRYSHIMI I GJENDJES DEBITORE GJTE VITIT 2019 (000/LEKE)

Viti 2019	Te arketueshme	Faturuar 2019	arketimi per faturat e 2019		Arketimi per faturat e 2007-2018		Arketimi total	Te Arketueshme per energjine e faturuar ne vitin 2019	Ndryshimi i gjendjes se Llogarive te arketueshme gjate vitit 2019	Shuarje Detyrimesh
			5	7	6=5+7	9=(2-5)				
	71,896,707	2		5		7	6=5+7		9=(2-5)	10=(2-5-7-a)
Janar	72,594,758	6,710,114	11,908	6,000,155	6,012,063	6,698,206	698,051	0		
Shkurt	72,200,340	5,819,929	4,371,736	1,842,611	6,214,348	1,448,193	394,418	0		
Mars	71,887,840	5,496,920	5,066,376	743,045	5,809,420	430,545	312,500	0		
Prill	71,416,559	5,155,722	5,183,086	443,917	5,627,003	27,364	471,281	0		
Maj	71,210,144	5,075,626	4,909,283	372,758	5,282,041	166,343	206,415	0		
Qershor	71,763,430	5,324,553	4,464,984	306,283	4,771,267	859,569	553,286	0		
Korrik	71,886,698	5,684,531	5,061,596	499,667	5,561,263	622,935	123,268	0		
Gusht</										

FATURIM-ARKETIMET DHE NDRYSHIMI I GJENDJES DEBITORE GJTE VITIT 2020 (000/LEKE)									
Viti 2020	Te arketueshme	Faturuar 2020	arketimi per faturat e 2020	Arketimi per faturat e 2007-2019	Arketimi total	Te Arketueshme per energjine e faturuar ne vitin 2020	Ndryshimi I gjendjes se Llogarive te arketueshme gjate vitit 2020	Shuarje Detyrimesh	
	72,573,657	2	5	7	6=5+7	9=(2-5)			
Janar	73,370,006	6,508,770	16,409	5,696,013	5,712,421	6,492,362	796,349	0	
Shkurt	73,517,039	6,106,516	4,215,767	1,743,716	5,959,484	1,890,749	147,033	0	
Mars	73,916,688	5,129,481	4,299,341	430,490	4,729,831	830,140	399,650	0	
Prill	73,467,701	5,029,219	5,202,266	275,941	5,478,206	173,047	448,988	0	
Maj	73,234,253	4,885,187	4,856,458	262,176	5,118,635	28,729	233,447	0	
Qershor	73,005,446	4,763,565	4,633,611	358,761	4,992,372	129,954	228,807	0	
Korrik	73,865,820	5,588,061	4,444,694	282,993	4,727,687	1,143,367	860,374	0	
Gusht	74,144,786	5,606,760	5,058,892	268,903	5,327,794	547,868	278,966	0	
Shtator	74,000,809	5,327,559	5,096,602	374,935	5,471,536	230,957	143,977	0	
Tetor	73,790,738	5,174,314	5,025,382	359,002	5,533,316	148,932	210,070	0	
Nentor	74,671,974	5,615,129	4,483,130	250,764	4,733,894	1,132,000	881,235	0	
Dhjetor	75,609,639	6,641,071	5,412,845	290,561	5,703,406	1,228,226	937,665	0	
Total									

FATURIM-ARKETIMET DHE NDRYSHIMI I GJENDJES DEBITORE GJTE VITIT 2021 (000/LEKE)									
Viti 2021	Te arketueshme	Faturuar 2021	arketimi per faturat e 2021	Arketimi per faturat e 2007-2020	Arketimi total	Te Arketueshme per energjine e faturuar ne vitin 2021	Ndryshimi I gjendjes se Llogarive te arketueshme gjate vitit 2021	Shuarje Detyrimesh	
	75,609,639	2	5	7	6=5+7	9=(2-5)			
Janar	76,272,477	6,400,370	19,639	5,717,893	5,737,532	6,380,731	662,838	0	
Shkurt	76,826,391	6,245,453	3,770,254	1,921,284	5,691,538	2,475,198	553,914	0	
Mars	76,605,803	6,158,373	5,690,524	688,438	6,378,961	467,849	220,588	0	
Prill	76,818,750	5,817,548	5,302,816	301,785	5,604,601	514,732	212,947	0	
Maj	76,122,770	5,190,837	5,558,138	328,680	5,886,818	367,301	695,980	0	
Qershor	75,924,651	5,548,298	5,417,458	328,959	5,746,417	130,840	198,119	0	
Korrik	76,924,743	6,377,974	5,053,270	324,612	5,377,882	1,324,705	1,000,093	0	
Gusht	77,478,064	6,554,952	5,648,400	353,231	6,001,630	906,552	553,321	0	
Shtator	76,933,233	5,401,032	5,687,762	258,102	5,945,864	286,730	544,832	0	
Tetor	76,284,525	5,544,032	5,739,826	452,913	6,192,739	195,794	648,707	0	
Nentor	76,704,823	5,794,416	5,080,754	293,364	5,374,118	713,662	420,298	0	
Dhjetor	78,394,397	7,572,744	5,583,186	299,984	5,883,170	1,989,557	1,689,574	0	
Total									

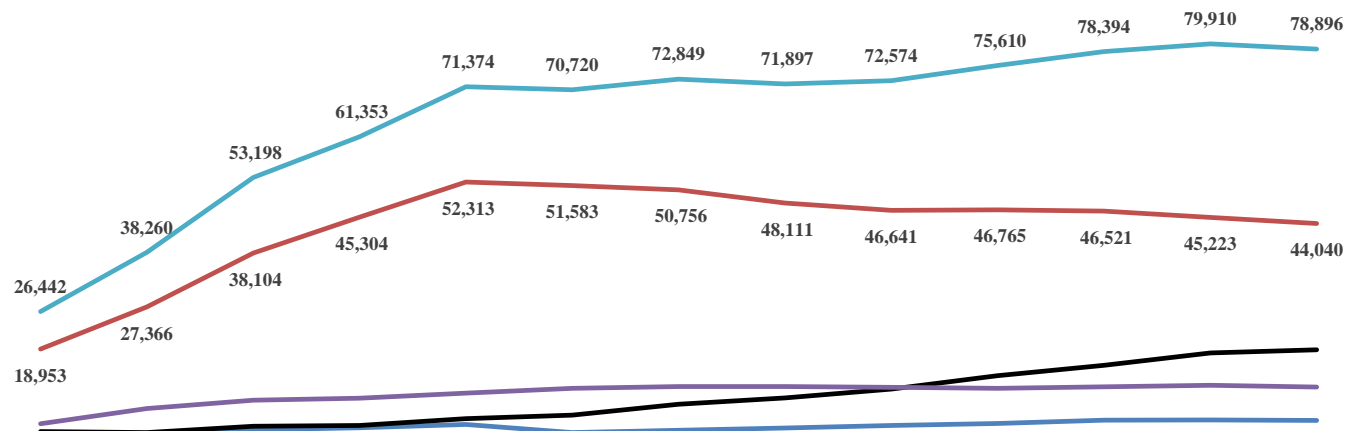
FATURIM-ARKETIMET DHE NDRYSHIMI I GJENDJES DEBITORE GJTE VITIT 2022 (000/LEKE)									
Viti 2022	Te arketueshme	Faturuar 2022	arketimi per faturat e 2022	Arketimi per faturat e 2007-2022	Arketimi total	Te Arketueshme per energjine e faturuar ne vitin 2022	Ndryshimi I gjendjes se Llogarive te arketueshme gjate vitit 2022	Shuarje Detyrimesh	
	78,394,397	2	5	7	6=5+7	9=(2-5)			
Janar	79,437,476	7,902,272	4,793,436	2,065,757	6,859,193	3,108,836	1,043,079	0	
Shkurt	80,288,829	7,515,728	4,569,541	2,094,835	6,664,376	2,946,187	851,353	0	
Mars	80,426,273	7,857,071	6,691,413	1,028,214	7,719,627	1,165,658	137,444	0	
Prill	79,617,380	6,186,945	6,531,117	464,721	6,995,838	344,172	808,893	0	
Maj	79,499,359	6,188,303	5,969,488	336,836	6,306,324	218,815	118,021	0	
Qershor	79,997,520	6,553,744	5,610,349	445,234	6,055,583	943,395	498,162	0	
Korrik	80,005,681	6,553,744	6,230,846	314,737	6,545,583	322,898	8,161	0	
Gusht	79,791,653	7,358,491	7,103,150	469,370	7,572,519	255,341	214,028	0	
Shtator	78,554,734	6,162,925	7,005,112	394,733	7,399,844	842,187	1,236,919	0	
Tetor	77,962,798	5,848,663	6,104,850	335,749	6,440,598	256,187	591,935	0	
Nentor	78,481,014	6,502,315	798,011	5,186,087	5,984,099	5,704,303	518,216	0	
Dhjetor	79,249,438	7,458,986	6,200,688	489,874	6,690,562	1,258,298	768,423	0	
Total		82,089,187			81,234,146				

FATURIM-ARKETIMET DHE NDRYSHIMI I GJENDJES DEBITORE GJTE VITIT 2023 (000/LEKE)									
Viti 2023	Te arketueshme	Faturuar 2023	arketimi per faturat e 2023	Arketimi per faturat e 2007-2022	Arketimi total	Te Arketueshme per energjine e faturuar ne vitin 2023	Ndryshimi I gjendjes se Llogarive te arketueshme gjate vitit 2023	Shuarje Detyrimesh	
	79,910,252	2	5	7	6=5+7	9=(2-5)			
Janar	80,265,490	7,236,860	17,571	6,864,050	6,881,621	7,219,288	355,238	0	
Shkurt	80,928,747	7,477,014	4,674,206	2,139,553	6,813,758	2,802,809	663,256	0	
Mars	80,025,935	6,588,875	6,660,084	831,603	7,491,687	71,209	902,812	0	
Prill	80,223,225	6,321,511	5,757,211	367,010	6,124,221	564,300	197,290	0	
Maj	79,402,801	5,993,172	6,505,113	308,483	6,813,596	511,941	820,424	0	
Qershor	79,665,073	6,074,125	5,550,743	261,110	5,811,853	523,382	262,272	0	
Korrik	81,307,082	7,326,635	5,416,995	267,632	5,684,626	1,909,640	1,642,009	0	
Gusht	81,148,340	7,281,460	6,976,104	464,097	7,440,201	305,356	158,741	0	
Shtator	80,122,629	6,339,551	6,941,811	423,452	7,365,263	602,259	1,025,711	0	
Tetor	78,896,288	5,987,458	6,799,334	414,465	7,213,799	5,572,992	1,226,341	0	
Nentor									
Dhjetor									
Total									

Burimi : OSHEE Group sha

	31.12.2009	31.12.2010	31.12.2011	31.12.2012	31.12.2013	31.12.2016	31.12.2017	31.12.2018	31.12.2019	31.12.2020	31.12.2021	31.12.2022	31.10.2023
Buxhetore	988	1,538	2,841	3,223	3,886	2,264	2,741	3,157	3,681	4,104	4,761	4,787	4,691
Familjare	18,953	27,366	38,104	45,304	52,313	51,583	50,756	48,111	46,641	46,765	46,521	45,223	44,040
JoBuxhetore	2,468	2,269	3,516	3,688	5,026	5,776	7,904	9,183	10,947	13,641	15,720	18,188	18,802
Privat	4,033	7,086	8,738	9,138	10,149	11,098	11,447	11,446	11,304	11,100	11,393	11,712	11,364
Total	26,442	38,260	53,198	61,353	71,374	70,720	72,849	71,897	72,574	75,610	78,394	79,910	78,896

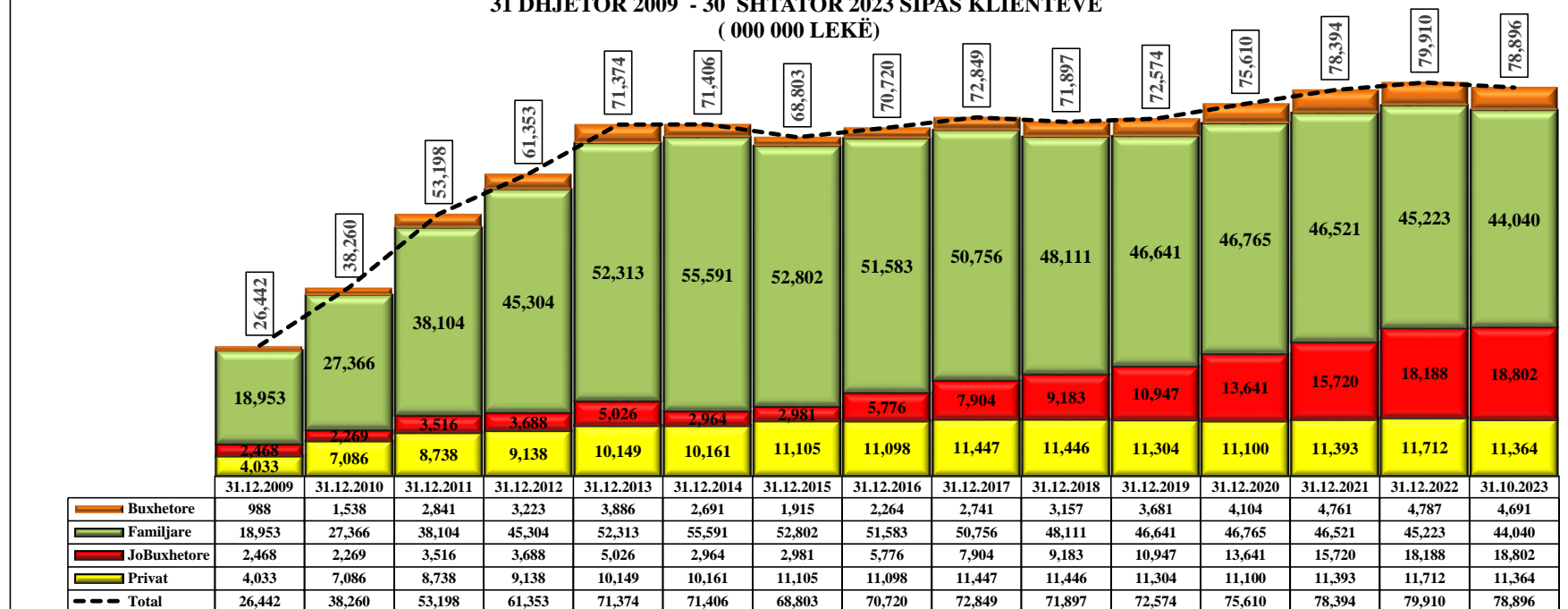
ECURIA E GJENDJES DEBITORE NDAJ OPERATORIT TE SHPERNDARJES
31 DHJETOR 2009 - 30 SHTATOR 2023 SIPAS KLIENTËVE
(000 000 LEKË)



	31.12.2009	31.12.2010	31.12.2011	31.12.2012	31.12.2013	31.12.2016	31.12.2017	31.12.2018	31.12.2019	31.12.2020	31.12.2021	31.12.2022	31.10.2023
Buxhetore	988	1,538	2,841	3,223	3,886	2,264	2,741	3,157	3,681	4,104	4,761	4,787	4,691
Familjare	18,953	27,366	38,104	45,304	52,313	51,583	50,756	48,111	46,641	46,765	46,521	45,223	44,040
JoBuxhetore	2,468	2,269	3,516	3,688	5,026	5,776	7,904	9,183	10,947	13,641	15,720	18,188	18,802
Privat	4,033	7,086	8,738	9,138	10,149	11,098	11,447	11,446	11,304	11,100	11,393	11,712	11,364
Total	26,442	38,260	53,198	61,353	71,374	70,720	72,849	71,897	72,574	75,610	78,394	79,910	78,896

	31.12.2009	31.12.2010	31.12.2011	31.12.2012	31.12.2013	31.12.2014	31.12.2015	31.12.2016	31.12.2017	31.12.2018	31.12.2019	31.12.2020	31.12.2021	31.12.2022	31.10.2023
Privat	4,033	7,086	8,738	9,138	10,149	10,161	11,105	11,098	11,447	11,446	11,304	11,100	11,393	11,712	11,364
JoBuxhetore	2,468	2,269	3,516	3,688	5,026	2,964	2,981	5,776	7,904	9,183	10,947	13,641	15,720	18,188	18,802
Familjare	18,953	27,366	38,104	45,304	52,313	55,591	52,802	51,583	50,756	48,111	46,641	46,765	46,521	45,223	44,040
Buxhetore	988	1,538	2,841	3,223	3,886	2,691	1,915	2,264	2,741	3,157	3,681	4,104	4,761	4,787	4,691
Total	26,442	38,260	53,198	61,353	71,374	71,406	68,803	70,720	72,849	71,897	72,574	75,610	78,394	79,910	78,896

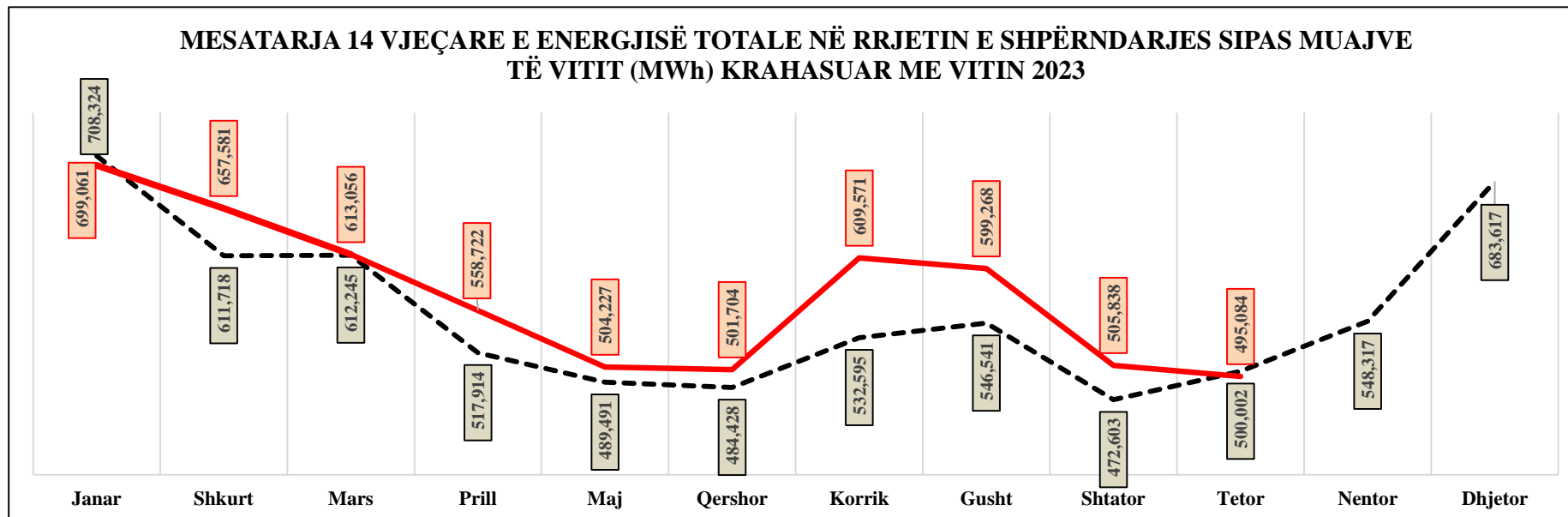
**ECURIA E GJENDJES DEBITORE NDAJ OPERATORIT TE SHPERNDARJES
31 DHJETOR 2009 - 30 SHTATOR 2023 SIPAS KLIENËVE
(000 000 LEKË)**



Burimi: FSHU sha / (OSHEE Group sha)

	Janar	Shkurt	Mars	Prill	Maj	Qershor	Korrik	Gusht	Shtator	Tetor	Nentor	Dhjetor	VITI
2009	644,987	568,719	589,279	462,709	448,118	427,694	467,863	493,772	439,604	489,635	557,554	639,797	6,229,731
2010	675,343	608,940	610,583	506,275	476,500	464,120	499,241	512,024	460,893	509,793	532,126	660,665	6,516,503
2011	708,264	623,208	634,087	536,286	533,564	495,139	545,315	567,282	512,979	551,132	619,655	710,870	7,037,781
2012	733,973	680,054	596,982	537,950	483,891	489,723	536,891	540,566	469,527	484,706	548,289	749,398	6,851,949
2013	743,846	665,392	673,578	545,600	502,945	511,390	546,696	565,789	493,056	532,555	589,808	774,403	7,145,060
2014	733,468	631,678	645,837	578,948	541,016	501,088	530,554	556,098	492,427	537,280	546,419	640,431	6,935,244
2015	686,041	591,978	594,775	514,282	472,405	465,730	536,160	529,208	459,012	476,969	519,281	649,026	6,494,867
2016	671,884	559,772	573,419	469,803	477,468	463,248	509,916	514,034	451,153	480,236	540,024	688,760	6,399,717
2017	715,886	562,270	545,214	493,731	475,055	485,386	529,805	543,145	451,103	482,629	546,256	667,841	6,498,322
2018	659,778	590,823	597,595	468,417	467,468	468,885	508,892	539,134	465,468	471,407	517,882	681,162	6,436,911
2019	735,813	586,992	559,331	500,485	501,061	500,729	533,842	565,788	471,684	472,833	507,920	639,953	6,576,432
2020	708,611	607,803	589,581	489,236	464,183	463,789	527,801	533,336	482,358	506,280	562,127	669,977	6,605,082
2021	724,554	629,962	662,183	590,810	504,970	519,563	591,485	603,872	485,288	523,606	552,840	747,790	7,136,936
2022	774,084	656,456	698,991	556,264	504,224	525,509	591,875	587,527	481,886	480,961	536,263	650,564	7,044,604
2023	699,061	657,581	613,056	558,722	504,227	501,704	609,571	599,268	505,838	495,084	548,317	683,617	

	Janar	Shkurt	Mars	Prill	Maj	Qershor	Korrik	Gusht	Shtator	Tetor	Nentor	Dhjetor
Mesatarja	708,324	611,718	612,245	517,914	489,491	484,428	532,595	546,541	472,603	500,002	548,317	683,617
2023	699,061	657,581	613,056	558,722	504,227	501,704	609,571	599,268	505,838	495,084	548,317	683,617



Burimi: OSHEE Group sha

NIVELI I HUMBJEVE (%) 2009-2023												
	Janar	Shkurt	Mars	Prill	Maj	Qershor	Korrik	Gusht	Shtator	Tetor	Nentor	Dhjetor
2009	40.75	37.05	38.05	32.93	33.44	30.75	32.60	30.20	25.34	30.67	33.44	36.89
2010	38.62	35.41	36.90	31.37	35.17	31.45	26.94	29.69	21.47	20.61	22.16	29.05
2011	55.55	38.00	36.95	23.11	24.85	21.29	21.88	19.41	22.95	25.15	32.20	35.70
2012	35.72	59.16	55.23	45.41	38.87	39.77	45.51	45.51	42.09	35.53	41.89	49.32
2013	51.12	48.71	48.29	39.66	39.52	40.33	43.33	38.50	35.08	45.98	48.08	53.04
2014	47.00	42.14	42.78	35.69	36.85	34.10	36.59	36.36	31.67	34.52	32.88	37.54
2015	36.68	31.82	32.88	30.54	31.24	28.60	30.62	29.29	25.30	29.92	30.82	34.50
2016	34.69	29.00	29.93	26.07	26.97	24.35	25.97	25.15	22.12	27.11	29.30	30.99
2017	33.50	27.63	28.66	25.81	25.88	28.31	24.69	23.29	19.79	23.76	23.55	27.90
2018	30.65	24.91	27.22	23.33	23.03	20.76	21.46	20.77	19.32	21.53	22.73	26.70
2019	29.25	23.21	26.5	21.36	22.10	19.92	20.42	19.81	17.54	20.40	21.58	24.76
2020	28.22	21.61	28.36	17.39	19.10	18.65	19.69	18.87	16.80	21.21	22.79	20.49
2021	27.87	20.1	25.92	21.08	17.92	18.34	18.75	17.93	16.22	18.56	19.88	20.25
2022	28.42	19.66	23.68	18.24	17.08	17.30	18.42	16.81	14.94	18.36	18.38	19.76
2023	25.79	19.06	21.05	18.65	16.68	16.04	17.48	16.17	14.80	17.62		

Niveli i Arketimeve (%) 2009-2023												
	Janar	Shkurt	Mars	Prill	Maj	Qershor	Korrik	Gusht	Shtator	Tetor	Nentor	Dhjetor
2009	69.32	85.95	74.38	86.58	86.31	76.37	75.40	72.46	83.20	80.82	61.77	70.01
2010	55.37	66.28	86.63	89.46	86.70	79.42	74.84	124.98	84.20	70.81	56.15	66.48
2011	67.26	57.61	87.66	71.61	96.73	73.00	65.00	81.00	66.00	63.86	51.47	87.30
2012	59.80	79.20	78.50	78.00	94.70	83.50	91.60	102.90	74.00	98.00	72.60	78.00
2013	61.40	63.70	86.20	80.70	79.10	69.60	87.90	90.10	78.50	84.30	89.00	102.00
2014	84.90	77.10	85.90	85.50	81.90	80.20	86.70	83.60	102.60	101.00	101.90	141.00
2015	112.70	120.50	103.70	86.60	95.70	97.10	98.40	104.70	95.30	100.30	92.20	100.70
2016	92.10	87.00	95.60	90.10	99.10	92.00	94.20	96.70	91.50	96.70	90.30	96.70
2017	85.20	87.60	105.70	94.50	105.70	91.80	104.80	97.40	94.60	103.80	92.70	100.10
2018	96.39	95.69	105.82	98.92	111.64	100.16	105.00	102.12	93.03	108.76	96.24	108.94
2019	90.7	92.6	99.8	102.4	102.50	94.00	104.40	99.30	93.90	104.70	89.60	110.70
2020	91.4	91.6	77.5	106.8	101.80	102.20	96.80	95.30	96.60	101.10	91.50	101.80
2021	86.4	88.9	102.1	91	101.20	110.70	96.90	94.10	90.70	114.70	96.90	101.50
2022	90.6	84.3	102.7	90.5	98.00	97.90	99.90	105.00	100.60	104.50	102.30	102.90
2023	92.3	94.2	100.2	92.9	113.7	95.70	93.60	101.60	101.20	113.80		

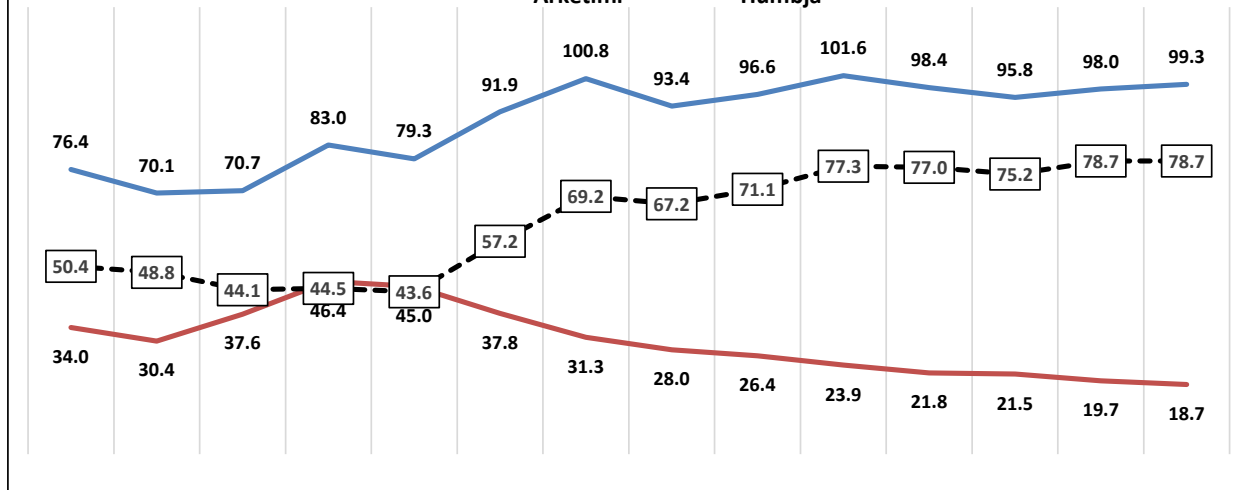
Efektiviteti i shitjeve (%) 2009-2022												
	Janar	Shkurt	Mars	Prill	Maj	Qershor	Korrik	Gusht	Shtator	Tetor	Nentor	Dhjetor
2009	41.1%	46.8%	53.6%	57.9%	50.8%	52.2%	48.8%	50.6%	62.1%	56.0%	41.1%	44.2%
2010	34.0%	56.0%	56.4%	59.5%	51.5%	51.3%	91.3%	87.9%	66.1%	56.2%	43.7%	47.2%
2011	29.9%	54.3%	45.2%	74.4%	54.9%	51.2%	63.3%	65.3%	50.9%	47.8%	34.9%	56.1%
2012	38.4%	32.1%	34.9%	51.7%	51.0%	55.2%	56.1%	56.1%	42.9%	63.2%	42.2%	39.5%
2013	30.0%	44.2%	41.7%	47.7%	42.1%	52.4%	51.1%	55.4%	51.0%	45.5%	46.2%	47.9%
2014	45.0%	49.7%	48.9%	52.7%	50.6%	57.1%	53.0%	53.2%	70.1%	66.1%	68.4%	88.1%
2015	71.4%	69.6%	60.2%	65.8%	69.3%	68.3%	72.6%	74.0%	71.2%	70.3%	63.8%	66.0%
2016	60.2%	67.0%	66.6%	72.4%	69.6%	69.7%	71.6%	72.4%	71.3%	70.5%	63.8%	66.7%
2017	56.7%	75.4%	70.1%	78.3%	65.8%	78.9%	73.4%	74.7%	75.9%	79.1%	70.9%	72.2%
2018	66.8%	77.0%	75.8%	85.9%	79.4%	82.5%	80.2%	80.9%	75.1%	85.3%	74.4%	79.9%
2019	64.2%	73.4%	80.5%	79.8%	75.3%	83.1%	79.0%	79.6%	77.4%	83.3%	70.3%	83.3%
2020	65.6%	55.5%	88.2%	82.4%	83.1%	77.7%	76.5%	77.3%	80.4%	79.7%	70.6%	80.9%
2021	62.3%	75.6%	71.8%	83.1%	90.4%	78.7%	76.5%	77.2%	76.0%	93.4%	77.6%	80.9%
2022	64.9%	78.4%	74.0%	81.3%	81.0%	81.5%	85.7%	87.3%	85.6%	85.3%	83.5%	82.6%
2023	68.5%	76.2%	79.1%	75.6%	94.7%	80.3%	77.2%	85.2%	86.2%	93.7%	0.0%	0.0%

	2009	2010	2011	2012	2013	2014	2015	2016	2017	2018	2019	2020	2022	2023(10-m)
Arketimi	76.4	70.1	70.7	83.0	79.3	91.9	100.8	93.4	96.6	101.6	98.4	95.8	98.0	99.3
Humbja	34.0	30.4	37.6	46.4	45.0	37.8	31.3	28.0	26.4	23.9	21.8	21.5	19.7	18.7
Efektiviteti	50.4	48.8	44.1	44.5	43.6	57.2	69.2	67.2	71.1	77.3	77.0	75.2	78.7	78.7

Efektiviteti i shitjeve ne Sistemin e Shperndarjes (%)

2009-2023

Arketimi Humbja



rimi FSHU (OSHEE Group s

ALOKIMI KAPACITETEVE 2023

Ankandi	Periodha	Shqipëri - Mali Zi						Shqipëri - Greqi						Shqipëri - Kosove											
		ATC e ofruar ne Ankand		ATC e shitur ne Ankand		Cmimi Ankandit		ATC e ofruar ne Ankand		ATC e shitur ne Ankand		Cmimi Ankandit		ATC e ofruar ne Ankand		ATC e shitur ne Ankand		Cmimi Ankandit							
		Export [MW]	Import [MW]	Export [MW]	Import [MW]	Export [Euro/MWh]	Import [Euro/MWh]	Export [MW]	Import [MW]	Export [MW]	Import [MW]	Export [Euro/MWh]	Import [Euro/MWh]	Export [MW]	Import [MW]	Export [MW]	Import [MW]	Export [Euro/MWh]	Import [Euro/MWh]						
Janar	01.01.2023-31.01.2023	150	100	150	100	3.14	1.62	200	150	200	150	3.05	3.55	200	200	200	200	1.28	0.92						
Shkurt	01.02.2023-28.02.2023	100	100	100	100	4.5	3.58	200	100	200	100	10.33	3.5	200	200	200	200	2.1	1.21						
Mars	01.03.2023-05.03.2023	100	100	100	100	2.77	2.21	200	200	200	200	8.22	0.63	200	200	200	200	1.44	0.88						
	06.03.2023-10.03.2023	50	50	50	50	4.44	3.88	100	100	98	97	8.22	0.63												
	11.03.2023-31.03.2023	100	100	100	100	2.77	2.21	200	200	200	200	8.22	0.63												
Prill	01.04.2023-02.04.2023	100	100	100	100	2.91	1.2	200	200	200	200	6.98	1.24	200	200	200	200	1.21	0.91						
	02.04.2023-03.04.2023							50	50	48	47	1.21	0.91												
	03.04.2023-04.04.2023																								
	04.04.2023-04.04.2023							100	100	97	99	6.98	1.24	200	200	200	200	1.21	0.91						
	05.04.2023-11.04.2023							50	50	49	49	2.91	1.2							50	200	45	200	6.98	1.24
	12.04.2023-17.04.2023																			200	200	200	200	6.98	1.24
	18.04.2023-18.04.2023							50	50	49	49	2.91	1.2	50	200	45	200	6.98	1.24	200	200	200	200	1.21	0.91
	19.04.2023-19.04.2023							100	100	100	100	2.91	1.2	200	200	200	200	6.98	1.24	200	200	200	200	1.21	0.91
	20.04.2023-28.04.2023													50	200	45	200	6.98	1.24						
29.04.2023-30.04.2023	200	200	200	200	6.98	1.24																			
Maj	01.05.2023-01.05.2023	100	100	100	100	1.55	0.9	50	200	46	200	7.50	0.58	200	200	200	199	0.14	0.08						
	02.05.2023-06.05.2023							0	0	0	0														
	07.05.2023-21.05.2023							50	200	46	200														
	22.05.2023-31.05.2023							200	200	200	200														
Qershor	01.06.2023-30.06.2023	100	100	100	100	2.31	1.75	200	200	200	200	10.00	0.66	200	200	200	200	0.88	0.64						
Korrik	01.07.2023-31.07.2023	100	100	100	100	0.88	1.5	200	200	200	200	5.77	0.6	200	200	200	200	0.24	0.55						
Gusht	01.08.2023-22.08.2023	100	100	100	99	0.66	1.5	200	200	200	200	4.7	0.88	200	200	200	200	0.19	0.98						
	23.08.2023-24.08.2023													50	50	47	46	0.19	0.98						
	25.08.2023-31.08.2023													200	200	200	200	0.19	0.98						
Shtator	01.09.2023-25.09.2023	100	100	100	99	0.81	2.33	200	200	200	200	3.5	0.69	200	200	200	200	0.26	1.47						
	26.09.2023-30.09.2023							150	150	143	146	3.5	0.69												
Tetor	01.10.2023-08.10.2023	100	100	100	100	1.5	2.17	200	200	200	199	3.5	0.9	200	200	200	200	0.33	0.91						
	09.10.2023-20.10.2023							100		99		3.5													
	21.10.2023-31.10.2023							200		200		3.5													

Burimi: OST sha

Disbalancat mujore [MWh] 2023 (10-MUJORI)

Pale Pergjegjese Balancuese	JANAR		SHKURT		MARS		PRILL		MAJ		QERSHOR		KORRIK		GUSHT		SHTATOR		TETOR		10-MUJORI 2023		
	Dis. Negative [MWh]	Dis. Positive [MWh]	Dis. Negative [MWh]	Dis. Positive [MWh]	Dis. Negative [MWh]	Dis. Positive [MWh]	Dis. Negative [MWh]	Dis. Positive [MWh]	Dis. Negative [MWh]	Dis. Positive [MWh]	Dis. Negative [MWh]	Dis. Positive [MWh]	Dis. Negative [MWh]	Dis. Positive [MWh]	Dis. Negative [MWh]	Dis. Positive [MWh]	Dis. Negative [MWh]	Dis. Positive [MWh]	Dis. Negative [MWh]	Dis. Positive [MWh]	Dis. Negative [MWh]	Dis. Positive [MWh]	
KURUM INTERNATIONAL	923	304	257	22	210	26	535	278	1,338	250	988	296	216	71	193	182	176	92	93	138	4,929	1,669	
DEVOLL HP	14	45	31	43	17	65	23	51	24	62	26	53	66	135	14	25	28	39	17	37	260	555	
DRAGOBIA ENERGY	2	64	1	60	3	89	3	105	75	137	8	161	7	95	1	59	3	36	3	64	105	871	
GEN4							31	43					2								45	31	
ENER TRADE	970	225	542	182	761	554	1,132	218	1,295	281	995	516	1,094	405	1,168	331	691	327	916	914	9,563	3,953	
ENERGY 24	121	215	118	150	132	270	177	339													548	974	
NOA	107	2	63	20	196	116	393	480	279	636	209	446	417	241	345	216	296	260	516	478	2,820	2,895	
AYEN AS ENERGJI	306	125	144	75	140	115	85	80	132	69	88	74	82	115	82	28	75	95	112	28	1,246	749	
GSA	125	1,641	760	151	1,681	490	1,499	30	1,871	173	1,945	94	4,465	34	2,971	257	2,449	165	1,568	160	19,334	3,185	
Furnizuesi I Tregut te Lire FTL (OSHEE Grup)	5,671	27,980	3,452	26,029	6,621	24,823	6,634	24,902	6,236	11,822	3,977	15,316	4,815	15,569	2,879	14,061	1,600	14,207	2,970	12,773	44,853	187,482	
KESH (Pale Pergjegjese Balancuese)	3,574	2,150	761	1,797	349	3,128	702	2,801	756	1,936	2,740	1,822	580	1,512	1,049	1,211	443	1,691	616	2,280	11,570	20,328	
EZ-5 ENERGY	126	126	178	45	288	110	221	182	291	224	344	139	268	42	238	50	224	95	112	97	2,288	1,108	
KOSTT	12,947	2,032	10,885	2,448	9,005	4,090	8,371	4,996	5,256	6,941	2,938	7,811	6,288	5,525	6,940	4,124	6,793	3,467	12,449	1,580	81,812	43,014	
KOSTT	1,322	2,661	332	2,987	1,975	1,457	1,117	1,616	1,781	1,933	1,285	863	2,326	655	1,680	1,314	1,201	1,328	1,362	901	14,380	15,716	
Ofruesi i Sherbimit te Balancimit	Ujje Gjenerimi [MWh]	Rritje Gjenerimi [MWh]	Ujje Gjenerimi [MWh]	Rritje Gjenerimi [MWh]	Ujje Gjenerimi [MWh]	Rritje Gjenerimi [MWh]	Ujje Gjenerimi [MWh]	Rritje Gjenerimi [MWh]	Ujje Gjenerimi [MWh]	Rritje Gjenerimi [MWh]	Ujje Gjenerimi [MWh]	Rritje Gjenerimi [MWh]	Ujje Gjenerimi [MWh]	Rritje Gjenerimi [MWh]	Ujje Gjenerimi [MWh]	Rritje Gjenerimi [MWh]	Ujje Gjenerimi [MWh]	Rritje Gjenerimi [MWh]	Ujje Gjenerimi [MWh]	Rritje Gjenerimi [MWh]	Ujje Gjenerimi [MWh]	Rritje Gjenerimi [MWh]	
Devoll HP Energjia Akt								2					6	42				2	103		331	8	478
Devoll HP Energjia Shtese Akt														3								0	3
KURUM INTERNATIONAL Energjia Akt									15	5												15	5
Ayen AS Energji Energjia Akt			170		319		84	197										258				1,028	0
Ayen AS Energji Energjia Shtese Akt																						0	0
KESH sh.a. Energjia Akt	10,340	4,943	11,233	3,901	9,882	7,363	10,554	5,985	7,702	5,204	9,165	2,640	8,014	6,865	7,242	6,156	7,228	1,691	3,836	4,773	85,196	49,521	
KESH sh.a. Energjia Shtese Akt	9,453	3,510	8,201	3,047	7,597	2,608	7,992	2,857	3,209	1,629	3,904	798	2,114	1,593	2,274	350	3,279	3,928	866	1,377	48,889	21,696	
TOTALI	46,000	46,023	37,129	40,957	39,177	45,304	39,520	44,951	30,501	31,310	28,612	31,030	30,760	32,892	27,075	28,364	24,686	27,465	25,433	25,931	328,892	354,226	
Disbalancat mujore [MWh]		23		3,828		6,127		5,431		809		2,418		2,133		1,289		2,779		498		25,334	

Barimi: OST sha

KLIENDET NE TL	KLIENDET E "KUALIFIKUAR" PER VITIN 2023												
	Energjia e faturuar ne [MWh]												
	Janar	Shkurt	Mars	Prill	Maj	Qershor	Korrik	Gusht	Shtator	Tetor	Nentor	Dhjetor	2023
EL220-L220KURUM/337	17,724	3,540	1,712	15,407	33,141	30,601	3,313	3,339	2,360	2706			113,842
Titan T1,T2	9,331	4,543	7,006	10,642	11,097	10,636	11,282	10,350	5,451	7616			87,954
FUSHE KRUIJE 220kV-T2/058	-	409	3,878	1,910	2,903	1,997	8,346	2,418	6,068	7345			35,273
N/ST 220/6,3Colacent-T1/336	631	910	2,421	1,371	1,130	2,168	1,619	216	1,922	1400			13,787
N/ST i GSA EL 110kV-T1/694	10,555	15,188	-	-	-	-	-	-	0	3081			28,823
N/ST i GSA EL 110kV-T2/960	-	219	15,779	16,873	17,440	16,979	17,438	17,030	17,081	7272			126,111
N/ST I CWI Albania T1/148	477	464	469	574.19	516	484	162	294	372	387			4,199
N/ST i AES EL 110kV-T1/690	30	48	-	-	1,491	6,969	7,274	7,290	3,460	4578			31,141
N/ST I AES EL 110kV-T2/692	111	84	1,175	6,722	5,719	-	-	6	3,636	1488			18,941
HEC Moglice T1,T2,T3	1	2	3	1	2.29	2	0.6	0.9	1	1			14
HEC Peshqesh-T1/633	7	20	4	3.52	6	20	31	32	30	27			182
Lajthiza T1/742	19	61	1	0.77	8	138	448	381	378	445			1,879
HEC Ashta1-T1,HEC Ashta2-T1,	0.13	-	-	0.00	-	-	-	0.00	0	0.08			0
HEC Banje T1,T2	14	14	18	15	25	18	21	18	20	18			181
HEC Fang-T1,T2.	10	27	19	36	34	48	52	47	23	21			316
Gjenerim KURUM	9.11	0	1	16.25	0.93	7	8	47	43	54			186
FERRO KROM-F1,F2,F3,F4	60	57	200	6,272	6,528	6,474	7,038	6,969	6,619	7231			47,447
TOTAL	38,979	25,586	32,684	59,843	80,042	76,540	57,032	48,438	47,464	473023			939,630

Burimi: OST sha

Devijimet nga programi interkoneksionit 2023 (10-mujori)

Data	Minus = Hyrje		Plus = Dalje										2023
	Janar	Shkurt	Mars	Prill	Maj	Qershor	Korrik	Gusht	Shtator	Tetor	Nentor	Dhjetor	
1	94	-18	44	54	165	120	67	-61	13	223			701
2	156	93	189	297	37	166	1728	28	75	141			2,910
3	-25	202	54	105	168	108	-79	-40	158	-54			598
4	0	92	-47	-74	77	200	-23	51	312	13			602
5	126	57	-57	65	251	303	198	554	74	-51			1,520
6	69	10	85	-33	73	199	120	1141	31	-71			1,623
7	-18	-185	256	49	271	28	20	223	57	-69			630
8	8	31	213	114	200	203	168	101	144	282			1,464
9	7	147	52	-20	-9	108	165	-20	33	-54			408
10	482	268	400	-64	76	10	-101	-254	88	-43			861
11	-26	8	997	206	7	122	63	-33	217	-73			1,488
12	131	-3	410	192	63	36	189	-115	-174	-91			639
13	128	200	267	214	-82	233	147	3	-45	-154			911
14	-1,084	805	67	465	-91	337	15	24	131	-31			638
15	-41	143	-621	221	477	123	-126	-84	-192	-125			-225
16	-1,634	194	40	142	363	440	26	-34	-892	45			-1,310
17	738	280	13	-16	131	646	-324	14	-184	-536			762
18	213	166	182	326	150	527	-145	234	26	91			1,769
19	682	337	157	360	3	323	48	11	-39	-190			1,692
20	787	155	199	155	25	-8	-30	240	52	27			1,602
21	259	4	243	591	18	-196	-35	125	9	139			1,157
22	138	-292	164	303	103	-694	-27	49	107	155			7
23	234	74	252	357	194	-1,971	346	-10	9	168			-348
24	587	189	102	280	-15	54	-80	129	163	34			1,443
25	-134	142	222	567	256	267	-303	460	824	184			2,484
26	-30	459	202	477	121	-37	-129	-20	461	1065			2,569
27	139	873	302	392	141	90	385	115	-143	-346			1,948
28	25	134	493	289	384	576	421	49	188	316			2,875
29	-246	0	27	79	136	225	-48	208	101	268			750
30	98	0	223	406	158	212	-52	43	134	-19			1,204
31	118	0	396	0	51	0	-39	-10		-134			382
Total	1,983	4,564	5,524	6,498	3,904	2,747	2,568	3,020	1736	1113			33,657

Burimi OST sha

9	KURUM INTERNATIONAL	Prodhim	Total OUT	22,226	37,320	34,630	36,000	25,200	0	0	0	8	0	155,384	
			Prodhim HEC-et	44,800	41,335	36,652	35,614	47,624	27,191	26,996	13,935	12,388	11,956	297,582	
			Total Prodhim	44,800	41,335	36,652	35,614	47,624	27,191	26,996	13,935	12,388	11,956	297,582	
			Shije Konsultimtare te Kualifikuar	17,821	4,015	3,287	16,454	33,832	30,917	3,474	3,991	3,798	3,119	118,615	
		Transaksionet e brendshme	Shije GSA	820				-21,488						8,837	
			Shije Ayen Energy Trading				54							54	
			Shije Ayen Energy Trading			-265									-265
			Shije GEN-1	40										40	
		Shkembime Cross-Border	Shije NDA	3,594			562	12,000	1,922	24,344		9,672		52,994	
			Shije NDA												
			Shije NDA												
			Total IN	3,594			562	12,000	1,922	24,344		9,672		52,994	
		Transaksionet e brendshme	Shije NDA	22,275	4,015	2,022	-286	24,344	32,859	27,818	13,935	12,388	11,956	142,193	
			Total transaksione	22,275	4,015	2,022	-286	24,344	32,859	27,818	13,935	12,388	11,956	142,193	
			Total transaksione	22,275	4,015	2,022	-286	24,344	32,859	27,818	13,935	12,388	11,956	142,193	
			Total transaksione	22,275	4,015	2,022	-286	24,344	32,859	27,818	13,935	12,388	11,956	142,193	
10	AXPO ALBANA	Shkembime Cross-Border	AL-GR Greece - IN	0	0	0	-20	0	0	0	-558	-410	0	-988	
			AL-KS Kosovo - IN	0	-3,204	-55	0	0	0	-5,400	0	-1,281	0	0	-9,989
			AL-ME Monte Negro - IN	-9,748	-9,486	-8,383	-5,538	-6,982	-2,145	0	-2,186	-1,761	-1,183	-47,415	-88,383
			Total IN	-9,748	-12,780	-8,438	-5,538	-6,982	-2,145	-5,400	-4,085	-4,744	-1,183	-47,415	-88,383
			AL-GR Greece - OUT	8,520	12,418	8,418	5,538	6,982	2,145	2,750	3,807	1,761	1,183	55,193	88,383
			AL-KS Kosovo - OUT	1,220	332	0	0	0	0	0	558	380	0	2,400	700
		Transaksionet e brendshme	AL-ME Monte Negro - OUT	0	0	0	20	0	0	650	0	30	0	700	58,383
			Total OUT	9,748	12,780	8,418	5,558	6,982	2,145	5,400	4,025	2,174	1,183	58,383	88,383
			Total transaksione	0	0	0	0	0	0	0	0	0	0	0	0
			Total transaksione	0	0	0	0	0	0	0	0	0	0	0	0
			Total transaksione	0	0	0	0	0	0	0	0	0	0	0	0
			Total transaksione	0	0	0	0	0	0	0	0	0	0	0	0
11	EFT (Energy Financing Team) TIRANA	Shkembime Cross-Border	AL-GR Greece - IN	-1,724	-1,780	-2,743	-2,740	-149	-8,306	-129	-4,589	-8,908	-6,507	-34,884	
			AL-KS Kosovo - IN	-34,585	-13,674	-14,961	-15,008	-7,014	-9,748	-10,698	-9,612	-12,783	-6,891	-134,996	
			AL-ME Monte Negro - IN	-29,139	-29,619	-29,176	-21,235	-18,062	-6,938	-19,252	-13,770	-11,116	-6,729	-182,826	
			Total IN	-65,448	-65,073	-66,880	-58,983	-32,225	-21,992	-30,679	-27,911	-32,245	-25,800	-197,727	
			AL-GR Greece - OUT	63,626	45,231	44,137	34,978	23,004	16,603	29,349	22,811	22,493	12,664	312,986	
			AL-KS Kosovo - OUT	0	35	547	807	2	507	134	504	3,483	2,046	8,867	
		Transaksionet e brendshme	AL-ME Monte Negro - OUT	2,022	1,816	2,196	3,198	149	4,882	596	4,656	6,831	5,017	31,363	
			Total OUT	65,648	45,082	46,880	38,983	23,245	21,992	30,679	27,911	32,800	19,727	352,166	
			Total transaksione	0	0	0	0	0	0	0	0	0	0	0	
			Total transaksione	0	0	0	0	0	0	0	0	0	0	0	
			Total transaksione	0	0	0	0	0	0	0	0	0	0	0	
			Total transaksione	0	0	0	0	0	0	0	0	0	0	0	
12	ReNRGY	Shkembime Cross-Border	AL-GR Greece - IN	-331	-2,757	-2,704	-6,002	-540	-7,423	-3,610	-5,820	-13,308	-9,547	-54,002	
			AL-KS Kosovo - IN	-2,073	-2,145	-4,108	-3,480	-2,775	-8,140	-5,711	-5,747	-2,861	-2,288	-37,238	
			AL-ME Monte Negro - IN	-11,840	-13,923	-17,928	-18,991	-19,523	-20,031	-18,915	-13,309	-10,408	-10,624	-155,589	
			Total IN	-14,244	-18,835	-24,640	-28,473	-22,838	-32,594	-28,236	-24,926	-26,835	-23,459	-246,880	
			AL-GR Greece - OUT	14,045	16,126	22,011	22,431	22,298	25,141	23,340	18,540	13,059	11,725	188,716	
			AL-KS Kosovo - OUT	612	1,608	933	1,100	0	3,537	1,247	3,203	5,901	3,506	21,647	
		Transaksionet e brendshme	AL-ME Monte Negro - OUT	714	1,797	1,699	4,942	540	3,916	2,323	2,957	9,523	4,414	32,243	
			Total OUT	14,871	19,531	24,640	28,473	22,838	32,594	26,229	24,790	28,485	19,645	242,606	
			Shije ALPEX							1	226	150	160	537	
			Shije KESH	-627	-696									-1,323	
			Total transaksione	-627	-696	0	0	0	0	1,407	0	0	0	4,274	
			Total transaksione	-627	-696	0	0	0	0	1,407	0	0	0	4,274	
13	EZ-5 ENERGY	Shkembime Cross-Border	AL-GR Greece - IN	0	0	0	0	0	0	0	0	0	0	-100	
			AL-KS Kosovo - IN	0	0	0	0	0	0	0	0	0	0	0	
			AL-ME Monte Negro - IN	0	0	0	-19	-281	-111	0	0	-122	-100	-633	
			Total IN	0	0	0	-19	-281	-111	0	0	-122	-200	-733	
			AL-GR Greece - OUT	0	450	0	0	0	0	0	0	0	0	450	
			AL-KS Kosovo - OUT	0	0	0	0	0	0	0	0	0	0	0	
		Transaksionet e brendshme	AL-ME Monte Negro - OUT	723	2,613	1,582	1,371	1,146	1,104	1,090	91	616	260	10,796	
			Total OUT	723	2,613	1,582	1,371	1,146	1,104	1,090	91	616	260	11,046	
			Prodhim	723	1,263	1,582	1,847	2,025	2,311	2,706	2,319	1,624	1,211	17,611	
			Total Prodhim	723	1,263	1,582	1,847	2,025	2,311	2,706	2,319	1,624	1,211	17,611	
			Shije KESH	6,511	1,800			-672	-336					-2,888	
			Shije KESH									900	1,625	1,925	
14	ENSCO Trading	Shkembime Cross-Border	Shije AYEN Energy Trading				-3,231	-688	85	47			-618	-761.6	
			Shije AYEN Energy Trading				126	216	240	272.6	424	8	215.2	1,561.8	
			Shije AYEN AS ENERGIH								-6.2			-6.2	
			Shije ENER TRADE					-672						-672	
			Shije FTL			3,600	2,976		720					7,200	
			Shije ALPEX						-23	-4				-4	
		Transaksionet e brendshme	Shije ALPEX					769.00	1,395.20	1,803.74	872.32	672.46	0	5,512.72	
			Total transaksione	0	-1,800	0	495	1,160	1,318	1,646	2,228	0	0	7,330	
			Total transaksione	0	-1,800	0	495	1,160	1,318	1,646	2,228	0	0	7,330	
			Total transaksione	0	-1,800	0	495	1,160	1,318	1,646	2,228	0	0	7,330	
			Total transaksione	0	-1,800	0	495	1,160	1,318	1,646	2,228	0	0	7,330	
			Total transaksione	0	-1,800	0	495	1,160	1,318	1,646	2,228	0	0	7,330	
15	ENER TRADE	Shkembime Cross-Border	AL-GR Greece - IN	-540	-400	-100	-865	-917	-3,325	-972	-2,490	-2,375	-6,622	-18,606	
			AL-KS Kosovo - IN	0	0	0	0	0	0	0	0	0	0	0	
			AL-ME Monte Negro - IN	-63	-150	-50	0	-20	-60	-1,285	-1,148	-510	-35	-3,321	
			Total IN	-603	-550	-150	-865	-937	-3,385	-2,287	-3,638	-2,885	-6,657	-21,927	
			AL-GR Greece - OUT	63	150	50	0	20	60	1,285	1,148	510	35	3,321	
			AL-KS Kosovo - OUT	0	0	0	0	0	0	0	0	0	0	0	
		Transaksionet e brendshme	AL-ME Monte Negro - OUT	540	400	100	865	917	3,325	972	2,490	2,375	6,622	18,606	
			Total OUT	603	550	150	865	937	3,385	2,287	3,638	2,885	6,657	21,927	
			Total transaksione	0	0	0	0	0	0	0	0	0	0	0	
			Total transaksione	0	0	0	0	0	0	0	0	0	0	0	
			Total transaksione	0	0	0	0	0	0	0	0	0	0	0	
			Total transaksione	0	0	0	0	0	0	0	0	0	0	0	
16	TIRANA INTERNATIONAL DEVELOPMENT sh.a.(TID)	Shkembime Cross-Border	AL-GR Greece - IN	-849	-1,669	0	-939	0	219	-21,059	-5,660	-13,809	-21,873	-47,800	
			AL-KS Kosovo - IN	-2,072	-1,838	-8,459	-7,500	-4,755	-9,563	-15,533	-7,456	-10,813	-21,176	-89,145	
			AL-ME Monte Negro - IN	-3,609	-7,057	-8,054	-4,841	-5,308	-4,311	-10,810	-5,362	-4,189	-10,423	-64,624	
			Total IN	-6,529	-12,559	-17,113	-12,499	-10,123	-14,889	-47,838	-18,478	-28,896	-53,471	-221,795	
			AL-GR Greece - OUT	10,170	5,388	6,246	2,220	17,088	7,610	4,963	3,111	9,871	9,362	76,480	
			AL-KS Kosovo - OUT	6,511	5,895	316	262	32,863	6,513	330	0	200	110	52,246	
		Transaksionet e brendshme	AL-ME Monte Negro - OUT	8,319	694	37	269	7,029	2,624	1,819	57	63	0	21,313	
			Total OUT	25,400	11,977	6,599	2,771	56,580	16,767	7,111	3,188	10,142	9,372	149,907	
			Shije Konsultimtare te Kualifikuar	8,887	4,182	6,799	9,728	10,882	10,158	10,593	9,813	5,087	7,614	82,244	
			Shije INFO Telecom sh.p.k.(INFO TELECOM)	-27,458	-3,600			-28,500						-51,639	
			Shije INFO Telecom sh.p.k.(INFO TELECOM)								30,090	5,820		35,910	
			Shije TIRANA INTERNATIONAL DEVELOPMENT sh.a.(TID)					-38,4							

Bilan KENDARAAN YAKSI 2017						
Periode	Perkiraan	Saldo Awal	Saldo Akhir	Saldo Awal	Saldo Akhir	Saldo Awal
Januari	01-01-2017	1000	1000	1000	1000	1000
Februari	01-02-2017	1000	1000	1000	1000	1000
Maret	01-03-2017	1000	1000	1000	1000	1000
April	01-04-2017	1000	1000	1000	1000	1000
Mei	01-05-2017	1000	1000	1000	1000	1000
Juni	01-06-2017	1000	1000	1000	1000	1000
Juli	01-07-2017	1000	1000	1000	1000	1000
Agustus	01-08-2017	1000	1000	1000	1000	1000
September	01-09-2017	1000	1000	1000	1000	1000
Oktober	01-10-2017	1000	1000	1000	1000	1000
November	01-11-2017	1000	1000	1000	1000	1000
Desember	01-12-2017	1000	1000	1000	1000	1000
TOTAL		1000	1000	1000	1000	1000

REKAPITULASI PERFORMAN DAN PERTINGKATAN KINERJA						
Nama	Jenis	Kategori	Mata Uang	Tipe	Tahun	Nilai per Tahun
...
TOTAL						

REKAPITULASI PERFORMAN DAN PERTINGKATAN KINERJA						
Nama	Jenis	Kategori	Mata Uang	Tipe	Tahun	Nilai per Tahun
...
TOTAL						

REKAPITULASI PERFORMAN DAN PERTINGKATAN KINERJA						
Nama	Jenis	Kategori	Mata Uang	Tipe	Tahun	Nilai per Tahun
...
TOTAL						

REKAPITULASI PERFORMAN DAN PERTINGKATAN KINERJA						
Nama	Jenis	Kategori	Mata Uang	Tipe	Tahun	Nilai per Tahun
...
TOTAL						

REKAPITULASI PERFORMAN DAN PERTINGKATAN KINERJA						
Nama	Jenis	Kategori	Mata Uang	Tipe	Tahun	Nilai per Tahun
...
TOTAL						

REKAPITULASI PERFORMAN DAN PERTINGKATAN KINERJA						
Nama	Jenis	Kategori	Mata Uang	Tipe	Tahun	Nilai per Tahun
...
TOTAL						

REKAPITULASI PERFORMAN DAN PERTINGKATAN KINERJA						
Nama	Jenis	Kategori	Mata Uang	Tipe	Tahun	Nilai per Tahun
...
TOTAL						

REKAPITULASI PERFORMAN DAN PERTINGKATAN KINERJA						
Nama	Jenis	Kategori	Mata Uang	Tipe	Tahun	Nilai per Tahun
...
TOTAL						

REKAPITULASI PERFORMAN DAN PERTINGKATAN KINERJA						
Nama	Jenis	Kategori	Mata Uang	Tipe	Tahun	Nilai per Tahun
...
TOTAL						

REKAPITULASI PERFORMAN DAN PERTINGKATAN KINERJA						
Nama	Jenis	Kategori	Mata Uang	Tipe	Tahun	Nilai per Tahun
...
TOTAL						

REKAPITULASI PERFORMAN DAN PERTINGKATAN KINERJA						
Nama	Jenis	Kategori	Mata Uang	Tipe	Tahun	Nilai per Tahun
...
TOTAL						

REKAPITULASI PERFORMAN DAN PERTINGKATAN KINERJA						
Nama	Jenis	Kategori	Mata Uang	Tipe	Tahun	Nilai per Tahun
...
TOTAL						

REKAPITULASI PERFORMAN DAN PERTINGKATAN KINERJA						
Nama	Jenis	Kategori	Mata Uang	Tipe	Tahun	Nilai per Tahun
...
TOTAL						

REKAPITULASI PERFORMAN DAN PERTINGKATAN KINERJA						
Nama	Jenis	Kategori	Mata Uang	Tipe	Tahun	Nilai per Tahun
...
TOTAL						

