

BILANCI ENERJITIK 9-MUJOR 2023 (MWh)

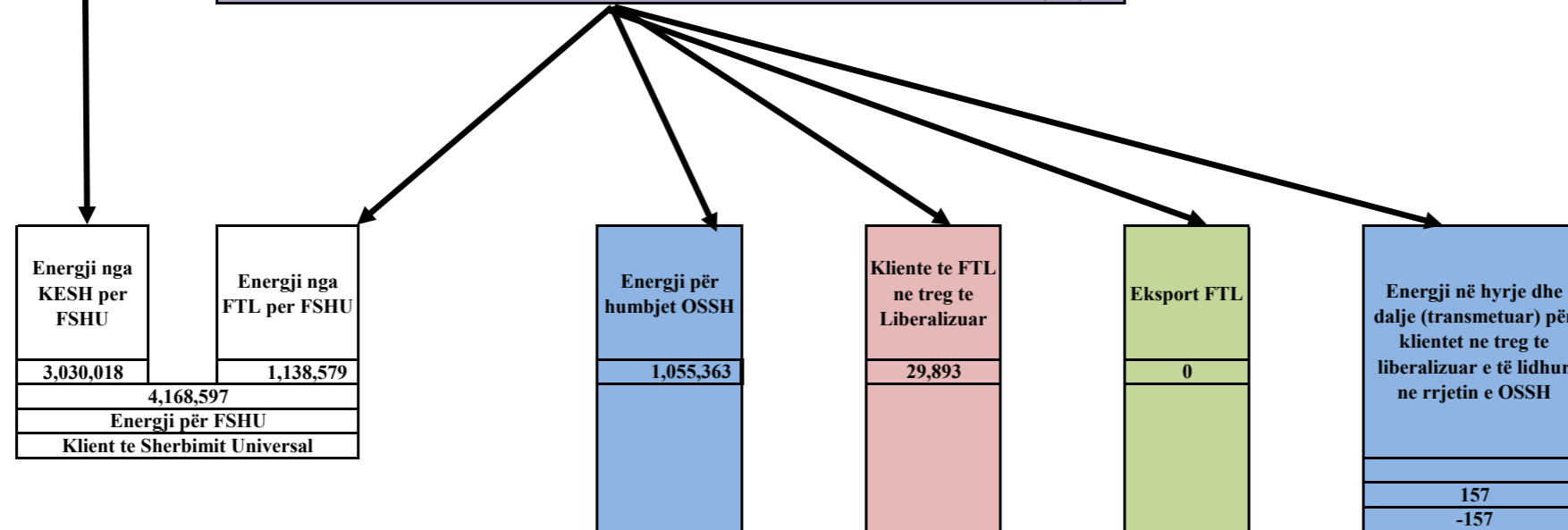
Prodhimi neto publik	
Prodhimi Neto KESH sha	
4,041,953	
Blerje KESH ne treg te liberalizuar	305,597
Prodhim+Blerje	4,347,550
Shkembime (hyrje) KEK	1,317,532
Shkembime (dalje) KEK	
Energji sherbime ndihmese+disbal	
Energji per FSHU nga KESH sha	3,030,018

Prodhuar nga PPE në rrjetin e OSSH			Prodhuar nga PPE ne rrjetin e OST		Prodhues te pavarur						
Selitë	HC.Priv/Kon ne Rrjetin e OSSH për FTL	FOTOVOLTAIK (kont FTL)	HC.Priv/Kon ne Rrjetin e OST për FTL	Neto Ashta	Neto Banja	Neto Moglica	Neto KURUM	H/C Peshqesh	H/C Fangu	Hec Qami	Fotovoltaik (ne treg te lire)
17,883	718,223	50,592	759,294	215,389	120,925	206,731	281,890	65,568	170,664	2,721	15,270

Prodhim neto vendas
6,667,103

Energji e siguruar nga FTL					
Blerje Neto (Selit)	Blerje HC.Priv/Kon ne Rrjetin e OSSH për FTL	Blerje FOTOVOLTAIK	Blerje HC.Priv/Kon ne Rrjetin e OST për FTL	Blerje Neto Ashta	Blerje ne Treg të Liberalizuar nga FTL
17,883	718,223	50,592	759,294	215,389	462,611
2,223,992					

Ballanca në interkoneksion (dhenie)
786,809



KONSUMI I ENERJISE NE SHQIPERI	5,880,347
---------------------------------------	------------------

5,880,294

Burimi: OST sha; KESH sha; OSSH sha; FSHU sha; FTL sha; (OSHEE Group sha)

BILANCI OSSH, FSHU,FTL sha 2023 (9-mujori)		
1	ENERGJI TOTALE E HYRE NE RRJETIN E OSSH-se	3,547,925
2	Energji e shitur nga KESH sha per FSHU sha	3,030,018
3	ENERGJI NE HYRJE E BLERE NGA FTL (OSHEE sha)	2,223,992
3.1	Blere nga Prodhimi i PPE në rrjetin e OSSH	786,698
3.2	Blere nga Prodhimi i PPE në rrjetin e OST	974,683
3.3	Blere ne Treg të Liberalizuar nga FTL sha	462,611
4	ENERGJI NE DALJE NGA FTL (OSHEE sha)	2,223,992
4.1	Energji nga FTL per FSHU	1,138,579
4.2	Energji nga FTL për humbjet OSSH	1,055,363
4.3	Energji e shitur nga FTL ne treg te liberalizuar	29,893
4.4	Eksport i FTL	-
4.5	Energji vetem per tu transmetuar tek klientet ne treg te liberalizuar (ne rrjetin e OSSH)	157
7	ENERGJI QE KALON NE RRJETIN E OSSH-se	5,626,717
7.1	Energji totale e transmetuar nga OST ne rrjetin e Shpërndarjes	4,824,739
7.2	Energji e transmetuar direkt ne rrjetin e Shpërndarjes nga impiantet e lidhur ne rrjetin e Shpërndarjes	412,345
7.3	Energjia e ngitur ne rrjetin e transmetimit nga centralet e lidhura ne rrjetin e OSSH	377,687
8	Humbje totale ne rrjetin e OSSH-se (%)	7.1 x 100 / 7
		18.76

Burimi: OSSH sha; FSHU sha; FTL sha;

Bilanci i Energjisë Elektrike për vitin 2023

OST sha	Njësia e Matjes	Janar	Shkurt	Mars	Prill	Maj	Qershor	Korrik	Gusht	Shtator	Shuma 2023 [MWh]
	MWh										
Prodhimi nga KESH_GEN në Rrjetin e Transmetimit	1	665,048	599,427	350,763	318,558	488,334	381,563	405,103	455,548	377,610	4,041,953
Prodhimi nga HEC/HPP e vogla në Rrjetin e Transmetimit	2	59,687	29,705	75,556	68,977	67,556	54,066	14,241	4,573	3,325	377,687
Prodhimi nga PPE/IPP e mëdha në Rrjetin e Transmetimit	3	129,234	69,919	138,215	127,256	133,255	100,979	41,042	12,984	9,130	762,013
Prodhimi nga HEC Peshqesh	4	13,532	6,558	13,089	12,741	9,140	5,257	2,507	1,463	1,281	65,568
Prodhimi nga HEC Banja	5	19,006	17,988	18,262	12,703	7,780	20,938	10,916	7,489	5,847	120,929
Prodhimi nga HEC FANG	6	41,733	21,699	32,666	20,161	17,504	6,123	4,155	8,673	17,951	170,664
Prodhimi nga HEC Moglicë	7	30,090	33,919	31,602	23,209	12,164	37,614	14,178	7,089	16,866	206,731
Prodhimi nga HEC Ashta	8	35,169	30,291	23,019	20,043	26,672	20,513	18,998	21,314	19,370	215,389
Prodhimi nga KURUM (Ulez-Shkopet&Bistrica1,2)		44,271	41,090	36,363	34,900	45,761	26,674	26,849	13,613	12,370	281,890
Eksporti (-) nga Linjat e Interkonjeksionit	D	387,717	265,662	250,922	199,681	364,397	222,009	125,007	142,789	184,860	2,143,044
Importi (+) nga Linjat e Interkonjeksionit	R	51,364	63,212	131,284	135,881	106,085	113,475	235,733	250,341	268,859	1,356,235
Balanca (Total Interkonjeksioni)	11=(R-D)	336,353	202,450	119,638	63,799	258,312	108,535	(110,726)	(107,553)	(83,999)	786,809
Energjia Totale në Marrje	2=(1+2+3+4+5+6+7+8+9+10+11)	1,089,134	913,807	850,819	774,430	914,251	767,200	773,722	783,086	732,609	7,599,059
Humbjet në Rrjetin e Transmetimit (përfshirë Nevojat Vetjake)	13	25,216	17,110	19,532	18,151	22,863	16,197	16,646	15,842	13,113	164,670
Humbjet në Rrjetin e Transmetimit %	14=13/12	2.32	1.87	2.30	2	3	2	2	2	1.79	2.17
Energjia Totale në Dhënie	15=(12-13)	1,063,918	896,697	831,287	756,279	891,388	751,004	757,077	767,244	719,496	7,434,389
<i>Transmetuar në Linjat e Interkonjeksionit</i>	16=D	387,717	265,662	250,922	199,681	364,397	222,009	125,007	142,789	184,860	2,143,044
<i>Transmetuar tek Klientët e Kualifikuar</i>		38,979	25,586	32,684	59,843	80,042	76,540	57,032	48,438	47,465	466,607
<i>EL220-L220KURUM/337</i>		17,724	3,540	1,712	15,407	33,141	30,601	3,313	3,339	2,360	111,136
<i>Titan T1,T2</i>		9,331	4,543	7,006	10,642	11,097	10,636	11,282	10,350	5,451	80,338
<i>FUSHE KRUIJE 220kV-T2/058</i>		-	409	3,878	1,910	2,903	1,997	8,346	2,418	6,068	27,928
<i>N/ST 220/6,3Colacent-T1/336</i>		631	910	2,421	1,371	1,130	2,168	1,619	216	1,922	12,387
<i>N/ST i GSA EL 110kV-T1/694</i>		10,555	15,188	-	-	-	-	-	-	-	25,742
<i>N/ST i GSA EL 110kV-T2/960</i>		-	219	15,779	16,873	17,440	16,979	17,438	17,030	17,081	118,839
<i>N/ST I CWI Albania T1/148</i>		477	464	469	574.19	516	484	162	294	372	3,812
<i>N/ST i AES EL 110kV-T1/690</i>		30	48	-	-	1,491	6,969	7,274	7,290	3,460	26,563
<i>N/ST I AES EL 110kV-T2/692</i>		111	84	1,175	6,722	5,719	-	-	6	3,636	17,453
<i>HEC Moglice T1,T2,T3</i>		1	2	3	1	2.29	2	0.6	0.9	1	14
<i>HEC Peshqesh-T1/633</i>		7	20	4	3.52	6	20	31	32	30	155
<i>Lajthiza T1/742</i>		19	61	1	0.77	8	138	448	381	378	1,434
<i>HEC Ashta1-T1,HEC Ashta2-T1,</i>		0.13	-	-	0.00	-	-	-	-	-	0
<i>HEC Banje T1,T2</i>		14	14	18	15	25	18	21	18	20	163
<i>HEC Fang-T1,T2,</i>		10	27	19	36	34	48	52	47	23	295
<i>Gjenerim KURUM</i>		9.11	0	1	16.25	0.93	7	8	47	43	132
<i>FERRO KROM-F1,F2,F3,F4</i>		60	57	200	6,272	6,528	6,474	7,038	6,969	6,619	40,216
<i>Transmetuar në rrjetin e Shpërndarjes</i>		637,223	605,449	547,681	496,756	446,949	452,455	575,038	576,018	487,171	4,824,739
<i>Transmetuar në rrjetin e Shpërndarjes 110 kV</i>		557,157	527,056	480,865	437,248	395,459	400,674	507,076	509,662	427,735	4,242,932
<i>Transmetuar në rrjetin e Shpërndarjes 35 kV</i>		43,042	41,140	35,667	31,282	28,494	29,728	39,388	38,182	35,331	322,254
<i>Transmetuar në rrjetin e Shpërndarjes 6, 10, 20 kV</i>		37,023	37,253	31,148	28,227	22,996	22,053	28,574	28,174	24,105	259,553

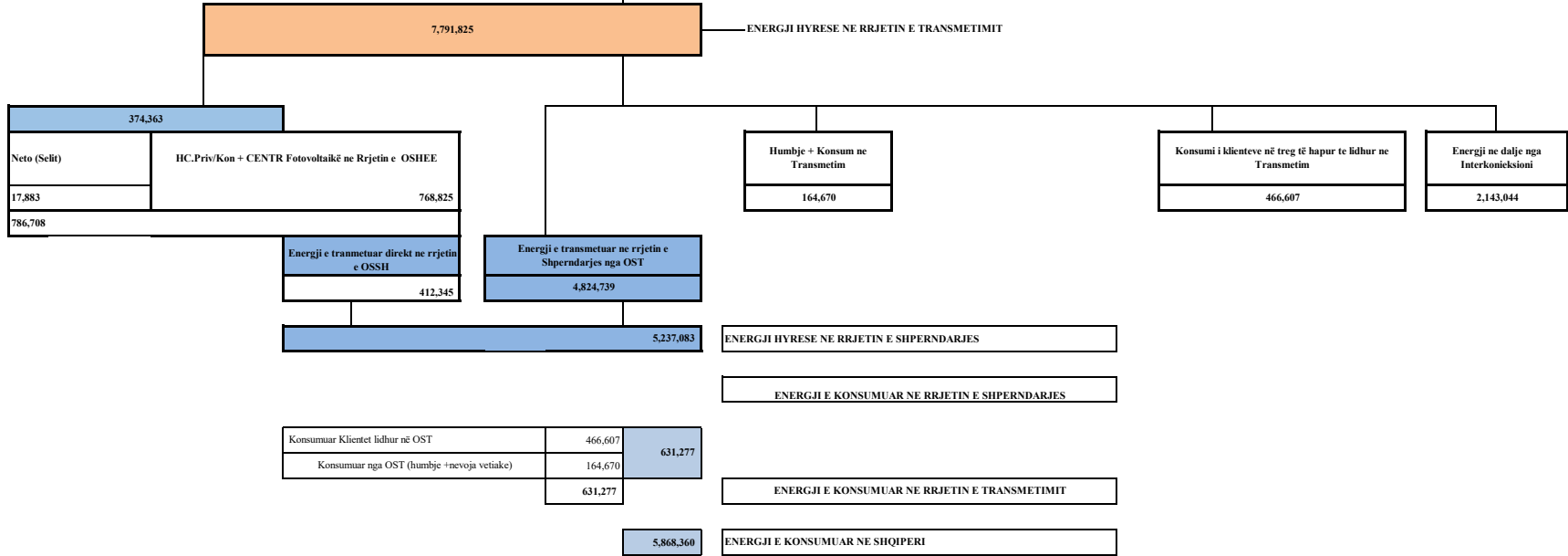
Burimi: OST sha

	Janar	Shkurt	Mars	Prill	Maj	Qershor	Korrik	Gusht	Shtator	2023		
HYRJE	Dhene nga H/C e KESH ne rrjetin e Transmetimit	665,048	599,427	350,763	318,558	488,334	381,563	405,103	455,548	377,610	4,041,953	7,599,059
	Dhene nga H/C e me perparesi ne rrjetin e Transmetimit (+Qami)	129,234	69,919	138,215	127,256	133,255	100,979	41,042	12,983	9,130	762,012	
	Energji nga Hec-et Lokale levruar ne Rrjetin e Transmetimit (me ngritje)	59,687	29,705	75,556	68,977	67,556	54,066	14,241	4,573	3,325	377,687	
	Gjenerim KURUM (prodhues i pavarur)	44,271	41,090	36,363	34,900	45,761	26,674	26,849	13,613	12,370	281,890	
	HEC ASHTA (prodhues i pavarur Kontr.me OSHEE)	35,169	30,291	23,019	20,043	26,672	20,513	18,998	21,314	19,370	215,390	
	HEC BANJE (prodhues i pavarur)	19,006	17,988	18,262	12,703	7,780	20,938	10,916	7,489	5,847	120,929	
	HEC MOGLICE (prodhues i pavarur)	30,090	33,919	31,602	23,209	12,164	37,614	14,178	7,089	16,866	206,731	
	HEC PESHQESH-TI/637 (prodhues i pavarur)	13,532	6,558	13,089	12,741	9,140	5,257	2,507	1,463	1,281	65,568	
	HEC FANGU (prodhues i pavarur)	41,733	21,699	32,666	20,161	17,504	6,123	4,155	8,673	17,951	170,664	
Importi(Hyre) nga Linjat e Interkonjeksionit	51,364	63,212	131,284	135,881	106,085	113,475	235,733	250,341	268,859	1,356,235		
DALJE	Humbjet ne Transmetim	25,216	17,110	19,532	18,151	22,863	16,197	16,646	15,842	13,113	164,670	7,599,059
	Transmetuar ne Rrjetin e Shperndarjes	637,223	605,449	547,681	496,756	446,949	452,455	575,038	576,018	487,171	4,824,739	
	Klientene treg te hapur (TL)	38,979	25,586	32,684	59,843	80,042	76,540	57,032	48,438	47,465	466,607	
	Eksporti (Dale) nga Linjat e Interkonjeksionit	387,717	265,662	250,922	199,681	364,397	222,009	125,007	142,789	184,860	2,143,044	
Humbjet ne Transmetim	25,216	17,110	19,532	18,151	22,863	16,197	16,646	15,842	13,113	164,670		
Humbjet ne Transmetim ne %	2.32	1.87	2.30	2.34	2.50	2.11	2.15	2.02	1.79	2.21		

Burimi: OST sha

PARAQITJA SKEMATIKE E FLUKSEVE TE ENERGIJISE NE SISTEMIN ELEKTRO-ENERGJITIK SHQIPETAR VITI 2023 (MWh) (9-mujori)

Energji e lëvruar nga H/C-et e KESH sha	Energji e lëvruar nga prodhuesit me përparësi lidhur ne TL (kontrate me OSHEE)	Energji e lëvruar nga H/C ASHTA lidhur ne TL (kontrate me OSHEE)	Energji e lëvruar nga H/C et Priv/konc lidhur ne TL (Prodhues ne treg te hapur)						Energji ne hyrje nga Interkoneksioni
4,041,953	759,294	215,389	Kurum	Banje	Moglice	Fangu	Peshqesh	Qumi	1,356,235
			281,890	120,929	402,819	170,664	65,568	2,721	



LEGJENDA

FSHU	FURNIZUES I SHËRBIMIT UNIVERSAL
FMF	FURNIZUES I MUNDËSISË SË FUNDIT

Burimi OST sha

PUBLIKIM 2023 (MWh) (9-mujori)

Prodhimi Vendas	Janar	Shkurt	Mars	Prill	Maj	Qershor	Korrik	Gusht	Shtator	2023
Prodhimi Neto KESH sha.	665,048	599,427	350,763	318,558	488,334	381,563	405,103	455,548	377,610	4,041,953
Hec-et Private dhe Konc. (Rrjeti Shperndarjes)	115,928	74,408	132,656	121,564	114,368	92,807	36,581	16,598	13,324	718,234
Hec-et Private dhe Konc. (Rrjeti Transmetimit)	128,643	69,793	137,555	126,555	132,825	100,896	41,039	12,915	9,072	759,292
HEC Ashta	35,169	30,291	23,019	20,043	26,672	20,513	18,998	21,314	19,370	215,389
Prodhimi Neto Hec Lanabregas	1,990	1,984	2,352	2,231	2,259	1,955	1,859	1,819	1,435	17,883
Prodhimi Neto (Hec Ulez,Shkopet,Bistrica 1,2)	44,271	41,090	36,363	34,900	45,761	26,674	26,849	13,613	12,370	281,890
Prodhimi Hec Peshqesh	13,532	6,558	13,089	12,741	9,140	5,257	2,507	1,463	1,281	65,568
Prodhimi Hec Fangu	41,733	21,699	32,666	20,161	17,504	6,123	4,155	8,673	17,951	170,664
Prodhimi Hec Banja	19,006	17,988	18,262	12,703	7,780	20,938	10,916	7,489	5,847	120,929
Prodhimi Hec Moglica	30,090	33,919	31,602	23,209	12,164	37,614	14,178	7,089	16,866	206,731
Prodhimi Hec Qami-I	592	126	659	702	430	83	3	68	58	2,721
Prodhimi i Centraleve Fotovoltaike (44 855 FTL +13 743 ne treg te lire)	3,609	5,445	5,924	7,149	8,207	8,554	10,334	9,407	7,233	65,861
ENERGJIA NETO E PRODHUAR NE SHQIPERI	1,099,609	902,727	784,911	700,516	865,443	702,975	572,522	555,995	482,418	6,667,116

ENERGJI NGA INTERKONEKSIONI	Janar	Shkurt	Mars	Prill	Maj	Qershor	Korrik	Gusht	Shtator	2023
Energji ne dhenie nga Interkoneksioni	387,717	265,662	250,922	199,681	364,397	222,009	125,007	142,789	184,860	2,143,044
Energji ne marrje nga Interkoneksioni	51,364	63,212	131,284	135,881	106,085	113,475	235,733	250,341	268,859	1,356,235
Ballanca Hyrje/Dalje nga Interkoneksioni	336,353	202,450	119,638	63,799	258,312	108,535	(110,726)	(107,553)	(83,999)	786,809

KONSUMI I ENERGJISE NE SHQIPERI	Janar	Shkurt	Mars	Prill	Maj	Qershor	Korrik	Gusht	Shtator	2023
Konsumi i klientëve Tarifore	413,204	437,395	372,279	355,985	318,303	322,423	393,404	397,282	336,332	3,346,607
Konsumi i klientëve të furnizuar si FMF	87,526	86,617	92,750	82,632	87,681	85,890	99,601	96,563	88,715	807,974
Shitur klienteve si dem ekonomik	535	696	702	45	230	78	3,379	2,977	433	9,076
Konsumi i Klientëve që përdorin rrjetin për energji e blerë ne treg të liberalizuar	21	19	26	30	43	19	-	-	-	158
Energji për Klientet ne treg të liberalizuar lidhur në OSSH me furnizues FTL	2,078	1,828	2,363	2,941	2,650	4,147	4,132	4,776	4,976	29,892
Konsumi për mbulimin e humbjeve	195,699	131,027	144,936	117,090	95,359	89,146	109,054	97,670	75,381	1,055,363
Konsumuar nga Klientet e lidhur në OST	38,979	25,586	32,684	59,843	80,042	76,540	57,032	48,438	47,465	466,607
Konsumuar nga OST (humbje +nevoja vetiake)	25,216	17,110	19,532	18,151	22,863	16,197	16,646	15,842	13,113	164,670
KONSUMI TOTAL 2023	763,258	700,278	665,273	636,716	607,171	594,440	683,248	663,548	566,415	5,880,347

Burimi: OST sha; KESH sha; OSSH sha; FSHU sha; FTL sha; (OSHEE Group sha)

PRODHIMI GJATE VITIT 2023 NGA CENTRALET E LIDHURA NE RRJETIN E TRANSMITIMIT (MWh)													
HECET DHE KAPACITETI	MW	SUBJEKTI	LIDHJA	JANAR	SHKURT	MARS	PRILL	MAJ	QERSHOR	KORRIK	GUSHT	SHTATOR	9-M 2023
Hec "Fierze"	500,000	"KESH" sha	220 kV										
Hec "Koman"	600,000		220 kV	665,048	599,427	350,763	318,558	488,334	381,563	405,103	455,548	377,610	4,041,954
Hec "V. Dejes"	250,000		220 kV										
Hec Vlora	98,000		220 kV										
4,041,954													
Hec "Ulez"	25,200	"Kurum International" sh.a.	110 kV										
Hec "Shkopet"	24,000		110 kV										
Hec "Bistrica 1"	22,500		110 kV	44,271	41,090	36,363	34,900	45,761	26,674	26,849	13,613	12,370	281,892
Hec "Bistrica 2"	5,000		110 kV										
Hec "Peshqesh"	27,940	"Ayen As Energji" sha	220 kV	13,532	6,558	13,089	12,741	9,140	5,257	2,507	1,463	1,281	65,568
Hec "Fangu"	74,600		220 kV	41,733	21,699	32,666	20,161	17,504	6,123	4,155	8,673	17,951	170,665
Hec "Banje"	73,000		110 kV	19,006	17,988	18,262	12,703	7,780	20,938	10,916	7,489	5,847	120,929
Hec "Moglice"	184,000		111 kV	30,090	33,919	31,602	23,209	12,164	37,614	14,178	7,089	16,866	206,731
Hec Qami-I	1,730	"Lajthiza Invest" shpk		592	126	659	702	430	83	3	68	58	2,721
848,506													
Hec "Ashta"	48,200	"Energji Ashta" shpk	110 kV	35,169	30,291	23,019	20,043	26,672	20,513	18,998	21,314	19,370	215,389
215,389													
Hec "Bishnica 2"	2,500	"HEC Bishnica 1,2" shpk	110 kV	1,152	670	1,405	1,312	1,203	819	414	234	174	7,384
Hec "Dardhe"	5,800	"Wenerg" shpk	110 kV	2,658	941	2,284	2,731	1,626	1,138	129	(12)	12	11,507
Hec "Truen"	2,500	"TRUEN" shpk	110 kV										
Hec "Termove"	0,921	"TEODORI 2003" shpk	110 kV	932	1,241	1,325	1,305	1,204	590	(14)	(13)	(14)	6,556
Hec "Gjorce"	29,610	"DITEKO" shpk	110 kV	15,292	11,680	16,101	14,594	12,802	9,566	6,046	3,571	3,475	93,127
Hec "Slabinje"	13,800	"Power Elektrik Slabinje" shpk	110 kV	7,972	3,915	10,486	8,748	10,801	8,130	3,053	1,562	917	55,585
Hec "Bele 1"	5,000	"Euron Energy" shpk	110 kV	15,244	10,142	17,429	19,483	20,210	19,184	10,197	3,090	1,287	116,266
Hec "Topojan 2"	5,800												
Hec "Bele 2"	11,000												
Hec "Topojan 1"	2,900												
Hec "Orgjost I Ri"	4,800	"Energjal" shpk											
Hec "Cerunje-1"	2,300	"Energy partners Al" shpk	110 kV	1,460	641	2,173	2,546	2,939	1,897	365	(11)	18	12,027
Hec "Cerunje-2"	2,800												
Hec "Rrube"	3,600												
Hec "Rapuni 1,2"	8,100												
Hec "Rapuni 3,4"	8,850	"C & S Energy" shpk	110 kV	4,572	2,559	4,428	4,241	3,756	2,931	1,109	380	42	24,018
Hec "Llapaj"	13,620	"Gjo.Spa.POWER" shpk	110 kV	4,658	2,372	5,536	6,303	9,142	5,906	2,374	831	518	37,640
Hec "Lengarice"	8,940	"Lengarica & Energy" shpk	110 kV	4,024	3,108	4,350	2,666	2,495	3,104	882	118	262	21,008
Hec "Lura 1"	6,540	"Erdat Lura" shpk	110 kV										
Hec "Lura 2"	4,020		110 kV	5,715	2,381	6,188	4,763	3,782	1,848	516	149		25,469
Hec "Lura 3"	5,660		110 kV									126	
Hec "Malla"	5,455		"Giure Rec" shpk	110 kV	1,948	1,004	1,993	1,549	1,259	718	277	(15)	(7)
Hec Prella	14,970	"Prelle Energji"	110 kV	5,038	2,239	5,919	4,670	4,597	3,322	928	3	9	26,725
HEC Cemerica 1	0,88	"REJ ENERGY" shpk	110 kV										
HEC Cemerica 2	1,08		110 kV	2,005	1,277	2,343	1,691	1,956	1,795	302	(15)	(14)	11,339
HEC Cemerica 3	2,1		110 kV										
HEC TUC	4,47		110 kV	5,034	1,187	3,753	3,494	2,013	1,012	603	(19)	548	17,625
HEC Lumzi	11	110 kV											
Hec Denas	14,5	"Denas Power" shpk	110 kV	5,364	2,929	5,552	3,784	4,142	4,502	976	410	281	27,940
Llenga 1	1,73	"HEC LLËNGË" sh.p.k	110 kV										
Llenga 2	0,3		110 kV	918	460	1,476	1,581	1,712	1,347	428	(5)		7,923
Llenga 3	1,5		110 kV									7	
HEC Shpella Poshte	2,3		Liria Energji shpk	110 kV	966	516	1,466	1,344	1,020	774	340	218	116
HEC Germani 1	4,8	"SA'GA-MAT" shpk	110 kV	1,832	551	1,764	1,423	913	1,334	622	17	5	8,461
HEC Germani 2	1,5		110 kV										
Hec Lashkiza 1	4,076		110 kV	1,390	597	1,116	695	589	195	21	(6)	(6)	4,590
Hec Lashkiza 2	0,882		110 kV										
Hec Seta 1+2	7,484	"Hydro Seta" sh.p.k	110 kV										
Hec Seta 3	2,722		110 kV	5,190	2,577	5,540	4,838	4,150	2,090	392	(4)	(11)	24,762
Hec Seta 4	4,724		110 kV										
HEC Darsi 1,2,3	12,7		Henz Energy shpk	110 kV	4,417	1,634	3,835	3,285	2,181	1,636	1,347	21	133
HEC Egnatia	5,1	REMI shpk	110 kV	1,862	715	1,453	1,566	1,340	915	519	286	109	8,765
HEC Seka & Zais/684	14,96	SEKA Hydropower shpk	110 kV	7,858	4,206	10,123	8,762	8,786	6,198	2,387	612	411	49,345
HEC ARSTI	3,13	Hec Arsti shpk	110 kV	2,088	1,158	1,885	1,844	1,322	845	129	(4)	62	9,329
HEC KASKADA GJADER T1/344	24,9	S.P.E. Gjader shpk	110 kV	3,766	1,252	3,542	3,193	1,414	412	62	69	101	13,812
HEC-et Dragobia&Ceremi/686	21,9	Dragobia Energy shpk	110 kV	8,543	4,249	7,679	7,383	14,533	8,961	3,504	1,411	258	56,518
HEC Veleshica 1,2	13,9	"Kalisi Hydropower" shpk	110 kV	2,425	1,168	1,899	1,840	5,361	5,342	1,433	(12)	45	19,501

2,266

128,643 69,793 137,555 126,555 132,825 100,896 41,039 12,915 9,974 759,294

PRODHIMI GJATE VITIT 2023 NGA CENTRALET E LIDHURA NE RRJETIN E SHPERNDARJES (MWh)													
HECET DHE KAPACITETI	MW	SUBJEKTI	LIDHJA	JANAR	SHKURT	MARS	PRILL	MAJ	QERSHOR	KORRIK	GUSHT	SHTATOR	9-M 2023
Hec "Lanabregas"	5,000	"Hec Lanabregas" sha	35	1,990	1,984	2,352	2,231	2,259	1,955	1,859	1,819	1,435	17,883
Hec "Lenie"	0,400	"EMIKEL 2003" sh.p.k	10kV	270	216	282	276	281	274	206	125	62	1,993
Hec "Corovode"	0,200		10kV	88	87	108	100	101	86	22	-	0	592
Hec "Smokthine"	9,200		35 kV	4,172	4,461	3,923	3,327	3,147	2,999	2,509	2,078	1,734	28,350
Hec "Bulqize"	0,600		10kV	124	93	158	153	166	130	98	72	61	1,054
Hec "Homesh"	0,395	"Albania Green Energy" sh.p.k	10kV	68	46	57	52	55	52	17	-	0	346
Hec "Zerqan"	0,625		6kV	104	131	174	174	165	128	114	98	90	1,179
Hec "Arras"	4,800		20kV	2,205	2,202	2,730	2,354	2,232	1,174	221	-	57	13,174
Hec "Orgjost"	1,200		10kV	700	625	724	753	671	613	413	134	6	4,640
Hec "Lekbibaj"	1,400	10kV	686	651	855	774	767	715	679	331	170	5,628	
Hec "Dukagjin"	0,640	10kV	129	131	143	136	135	80	282	270	197	1,502	
Hec "Marjan"	0,200	10kV	-	-	-	-	-	-	-	-	-	-	-
Hec "Lozhan"	0,100	10kV	44	26	59	63	55	27	-	-	0	274	
Hec "Barmash"	0,830	10kV	138	209	233	137	117	118	62	-	0	1,014	
Hec "Treske 2"	0,250	"Balkan Green Energy" shpk	10kV	86	86	124	99	95	82	25	-	0	598
Hec "Nikoce"	0,700		10kV	159	112	202	222	255	198	135	70	60	1,413
Hec "Funares"	1,920		10kV	852	849	821	868	835	738	232	-	68	5,262
Hec "Lunik"	0,200		10kV	143	134	135	144	139	107	-	-	0	802
Hec "Kerpace"	0,420	"Spahiu Gjanc" sh.p.k.	6kV	70	47	59	57	64	72	66	73	70	578
Hec "Ujanik"	0,630		10kV	132	89	172	140	110	102	47	0	13	805
Hec "Borsh"	0,250		6kV	62	113	78	119	96	82	35	32	42	660
Hec "Leshnice"	0,380		10/6kV	104	121	115	83	69	41	24	4	0	560
Hec "Velecan"	1,200	10kV	413	286	619	463	743	511	175	64	1	3,274	
Hec "Muhur"	0,250	6kV	76	75	84	72	66	24	-	-	39	436	
Hec "Rajan"	1,020	10kV	276	371	494	321	246	179	96	-	0	1,983	
Hec "Lure"	0,750	10kV	78	16	43	30	33	5	0	-	0	206	
Hec "Gjanç"	2,960	"Spahiu Gjanc" sh.p.k.	35 kV	-	5	1,594	-	539	1,170	1,755	1,703	901	7,666
Hec "Bogove"	2,500	"Wonder power" sha	35 kV	993	689	1,330	813	965	1,194	297	48	0	6,329
Hec "Xhyre"	0,570	"Amal" sh.p.k.	10kV	241	207	227	210	216	184	119	84	54	1,540

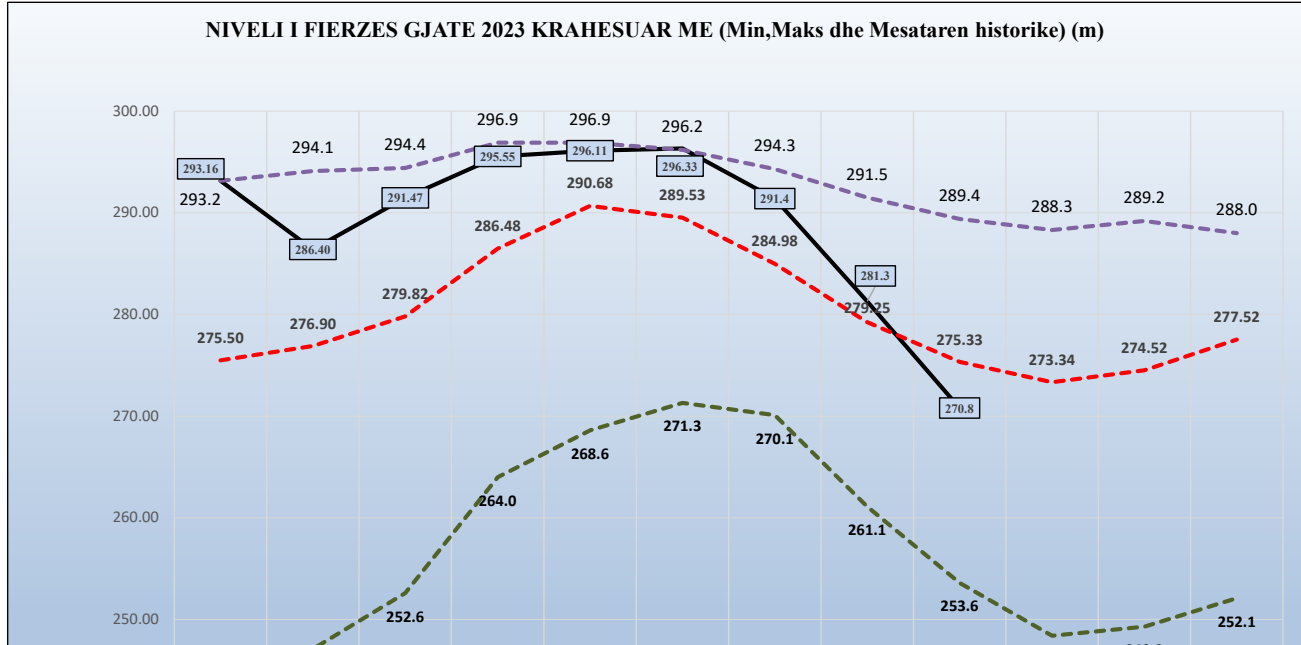
Hec "Stranik"	4.600		35kV	1,875	1,060	2,117	1,829	1,364	841	215	-	0	9,300
Hec "Zall Tore"	3.000	"Hidroinvest 1" shpk	35kV	1,468	885	1,666	1,580	1,171	792	446	214	0	8,220
Hec "Kllos"	1.950	"Malido-Energji" shpk	6kV	568	313	512	406	329	201	65	-	0	2,393
Hec "Bojce"	1.500	"HIDROALBANIA Energji" shpk	35kV	2,275	1,448	2,495	2,830	3,813	3,156	1,803	649	542	19,010
Hec "Cemavele "	2.950	"HIDROALBANIA Energji" shpk	35kV	989	585	1,018	1,235	1,848	1,388	680	269	198	8,210
Hec "Cemavele 1"	3.270	"HIDROALBANIA Energji" shpk	35kV	1,087	641	1,129	1,345	2,039	1,542	755	303	217	9,058
Hec "Murdarh 1"	2.680		10kV	1,654	1,072	1,579	1,915	1,050	748	195	56	34	8,304
Hec "Murdarh 2"	1.000	"HydroEnergy" shpk	10kV	964	621	906	1,141	624	373	90	27	17	4,764
Hec "Dishnice"	0.200	"Dishnica Energy" shpk	10kV	30	22	51	70	79	47	31	13	9	352
Hec "Lubonje"	0.300	"Elektro Lubonje" shpk	10kV	90	57	97	66	68	33	-	-	0	410
Hec "Peshke"	3.430	"Koka & Ergi Energy Peshke" shpk	35kV	1,564	924	2,143	1,952	1,435	1,429	377	-	87	9,910
Hec "Labinot -Mal"	0.250	"Ansara Koncension" shpk	6kV	42	43	42	44	44	30	18	5	0	268
Hec "Pobreg"	12.300	"Energy Plus" shpk	35kV	5,448	3,469	6,101	6,915	7,184	6,590	2,578	235	395	38,915
Hec "Vlushe"	14.200	"Hec Vlushe " shpk	35kV	5,707	2,602	5,944	4,223	5,330	4,042	708	-	55	28,610
Hec"Belesova 1"	0.150	"Korkis 2009" shpk	6kV	17	6	18	-	28	11	-	-	0	80
Hec "Faqekuq 1,2"	6.400	"HP OSTROVICA" shpk	35kV	1,709	882	2,227	2,198	3,554	2,092	419	190	102	13,373
Hec "Shemri"	1.000		10	454	123	438	440	242	190	-	-	0	1,887
Hec "Mgulle"	0.280	"Erald Energjitik" shpk	10kV	247	163	297	293	230	160	2	-	0	1,391
Hec "Kryeze 1"	0.600	"Bekim Energjitik" shpk	10kV	545	212	516	555	298	68	-	-	0	2,194
Hec "Selishte"	2.000	"Selishte" shpk	35kV	795	474	1,131	1,022	810	499	187	124	42	5,083
Hec "Carshove"	1.500		10kV	408	404	460	307	304	299	64	0	6	2,253
Hec "Ura e Dashit"	1.200	"ERMA MP" shpk	10kV	1,411	1,059	1,609	1,015	946	1,150	190	17	36	7,432
Hec "Gizavesh"	0.500	"Dosku Energy" shpk	10kV	362	298	-	-	-	-	-	-	0	660
Hec "Koka 1"	3.200	"Snow Energy" shpk	35kV	573	312	1,015	1,095	666	680	230	120	1	4,694
Hec "Stravaj"	3.600	"Stravaj Energji" shpk	35kV	1,664	897	1,934	1,725	1,182	844	305	116	55	8,722
Hec "Picar 1"	0.200	"Peshku Picar 1" shpk	6kV	67	96	83	63	52	40	36	25	15	476
Hec "Vertop"	1.520	"Hydro Salillari Energy" shpk	35kV	297	190	270	244	50	149	70	-	0	1,271
Hec "Martanesh"	10.500	"Albanian Power" shpk	35kV	2,242	1,353	3,360	2,833	2,147	2,172	459	-	127	14,693
Hec "Verba 1,2"	5.000	"Hydro power Plant Of Korea" shpk	35kV	611	392	812	991	2,300	1,404	350	114	88	7,062
Hec "Fterra"	1.080	"Hydro Borshi" shpk	35kV	843	700	1,009	870	793	679	562	520	420	6,398
Hec "Ostren i Vogel"	0.320	"Lu & Co Eco Energy" shpk	10kV	91	85	107	108	111	93	81	64	54	792
Hec "Kozel"	0.500		10kV	101	48	72	133	157	134	-	-	0	646
Hec "Helmes 1"	0.800	"E.T.H.H. " shpk	10kV	209	118	253	352	341	213	16	-	0	1,502
Hec "Helmes 2"	0.500		10kV	103	71	132	157	186	160	18	-	0	826
Hec "Qafezeze"	0.400	"Caushi Energji" shpk	10kV	396	282	459	420	422	400	67	32	56	2,533
Hec "Trebisht"	1.775	"S.A.G.L.E.Kompani "shpk	10kV	654	321	712	753	593	243	-	-	0	3,276
Hec "Mollaj"	0.600	"Energji Xhaci" shpk	10kV	-	-	76	59	161	163	-	-	68	527
Hec "Tucep"	0.400	"Tucep" shpk	10kV	272	268	299	3	300	270	255	215	218	2,100
Hec "Treska4"	3.600		35kV	1,298	911	1,358	1,035	1,025	975	440	296	216	7,555
Hec "Treska3"	0.300	"Hec-Treske"shpk	35kV	206	134	216	158	161	154	65	44	34	1,173
Hec "Treska 2T"	0.620		35kV	450	234	343	258	256	223	101	65	48	1,977
Hec "Sotirel 1 & 2"	2.200	"Hydro Energy Sotire"shpk	35kV	714	312	606	507	634	913	505	95	7	4,293
Hec "Shutine"	2.400	"Shutina energji"shpk	10kV	427	239	584	549	261	113	-	-	0	2,173
Hec "Cekrez 1,2"	0.660	"Zall Herr Energji 2011"shpk	6kV	289	273	307	298	200	406	398	392	367	2,930
Hec "Qarr"	1.000	"Hec Qarr & Kaltan"shpk	35kV	764	373	585	327	282	386	131	142	172	3,162
Hec "Bisak"	1.300	"Bardhjana" shpk	6kV	645	436	595	423	333	209	149	-	0	2,791
Hec "Shales"	1.080		35kV	-	-	316	323	245	161	66	3	0	1,114
Hec "Strelec"	1.174	"Gjoka Konstruksion Energji" shpk	35kV	405	367	916	802	557	727	98	3	0	3,875
Hec "Shpelle Poshte"	0.400	"Sarolli" sh.p.k	10kV	117	75	179	214	111	127	44	6	13	886
Hec "Bicaj"	3.100	"EN-KU" sh.p.k	10kV	-	-	-	-	-	-	-	-	0	-
Hec "Leskovik 1"	1.072		10kV	41	43	49	46	42	39	24	-	0	284
Hec "Leskovik 2"	1.100	"Maksi Elektrik" sh.p.k	10kV	51	55	62	59	63	59	35	-	0	384
Hec "Orenje"	0.875	"Juana" sh.p.k	10kV	250	201	191	193	163	109	-	-	0	1,106
Hec "Tamarë"	0.750	"WTS Energji" shpk	10kV	-	-	-	-	-	-	-	-	0	-
Hec "Bene"	1.000	"Marjaka" shpk	6kV	163	124	162	163	155	50	-	-	0	818
Hec "Vithkuq" 2				-	879	-	-	-	1,226	306	166	167	2,744
Hec "Vithkuq"1	2.715	"Favina 1" shpk	35/10kV	1,585	-	-	1,408	1,257	-	-	-	-	4,250
Hec "Selece"	1.600	"Selea Energji" shpk	10kV	615	506	575	788	1,149	882	270	218	104	5,108
Hec "Kumbull- Merkurth"	0.830	"DN & NAT Energy"shpk	6kV	171	54	230	207	346	100	-	-	0	1,108
Hec "Sasaj"	8.600	"Energjo - Sas" shpk	35kV	2,757	2,333	3,041	2,471	2,355	1,711	924	920	767	17,278
Hec "Tervol"	10.600	"Hec i Tervolit" shpk	35kV	3,704	1,461	4,999	4,757	3,025	2,556	1,017	507	250	22,276
Hec "Radove"	2.500	"MTC Energy" shpk	10kV	1,213	1,053	1,184	737	765	918	335	183	170	6,557
Hec "Gurshpat 1"	0.840		10kV	721	511	496	575	491	341	176	70	30	3,409
Hec "Gurshpat 2"	0.830	"Gurshpat Energy" shpk	10kV	817	563	617	653	542	375	144	63	54	3,828
Hec "Bistrica 3"	1.570	"Bistrica 3 Energy" shpk	6kV	477	42	-	13	605	658	559	418	564	3,336
Hec "Hurdhas 1"	1.710	"Komp Energji" shpk	6kV	2,102	1,064	1,732	1,692	1,326	667	605	57	0	9,243
Hec "Perrollaj"	0.500	"Fatlum" shpk	10kV	145	39	86	137	68	-	-	-	0	474
Hec "Koxheraj"	0.620	"Koxherri Energji" shpk	10kV	206	136	260	210	171	182	80	34	35	1,313
Hec "Kacni"	3.870	"Kisi-Bio-Energji" shpk	20kV	483	78	927	628	927	470	35	140	10	3,698
Hec "Lena 1"	1.950		35kV	-	-	-	-	-	-	-	-	-	-
Hec "Lena 2"	2.300	"Gama Energy" shpk	35kV	950	444	1,354	1,284	868	849	99	-	27	5,875
Hec "Lena 2A"	0.250		35kV	-	-	-	-	-	-	-	-	-	-
Hec "Driza"	3.408	"Mesopotam Energy" shpk	35kV	449	304	363	281	234	159	113	70	8	1,981
Hec Strelca 1,2,3	5.349	"Strelca Energy" shpk	35kV	786	697	1,537	1,749	2,563	1,758	529	261	150	10,030
Hec "Ujanik 2"	2.500	"HP Ujaniku Energy" shpk	35kV	815	431	904	526	414	554	61	-	0	3,705
Hec "Nishove"	1.360	"Nishova Energy" shpk	35kV	70	64	59	62	60	10	-	-	0	324
Hec "Shtika"	1.300	"Perparimi SK" shpk	10kV	476	391	397	255	159	93	-	-	0	1,771
Hec "Ballenje"	1.900	"Ballenja Power Martanesh" shpk	35kV	483	187	646	606	409	489	70	-	0	2,890
Hec "Gavran 1"	0.998	"Gavran Energy" shpk	35kV	444	171	431	413	283	200	58	-	0	2,000
Hec "Gavran 2"	1.215	"Gavran Energy" shpk	35kV	318	127	316	351	246	154	105	22	0	1,639
Hec "Kasollet e Selces 1"	4.000	"Xhango Energji" shpk	35kV	851	543	1,327	1,044	1,409	1,018	389	238	187	7,004
Hec "Holta Kabash"	2.200		35kV	-	-	-	-	-	-	-	-	-	-
Hec "Holta Poroçan"	3.300	"HEC Kabash Poroçan shpk	35kV	1,324	694	1,762	1,414	1,183	974	515	214	122	8,203
Hec "Lusen 1"	0.315	"Eurobiznes" shpk	35kV	93	59	89	67	34	-	-	21	0	363
Hec "Ura e Fanit"	1.000	"Ayen As Energji"sha	35kV	563	510	577	547	538	532	538	532	466	4,804
Hec "Gorice"	1.747	"THE BLUE STAR" sh.p.k	35kV	684	423	1,117	966	671	721	113	-	0	4,695
Hec "Kabash 1&2"	5.800	"Univers Energji" shpk	35kV	1,078	264	1,017	993	409	5	-	-	0	3,766
Hec "Tucep 2"	1.7	"DUKA T2" shpk	35kV	343	348	405	689	398	324	250	203	230	3,191
Hec "Dobrenje Tomorrice"	2.4	DAAB Energy Group shpk	35kV	346	242	336	266	228	232	104	25	65	1,845

NIVELI I FIERZES 1991-2023

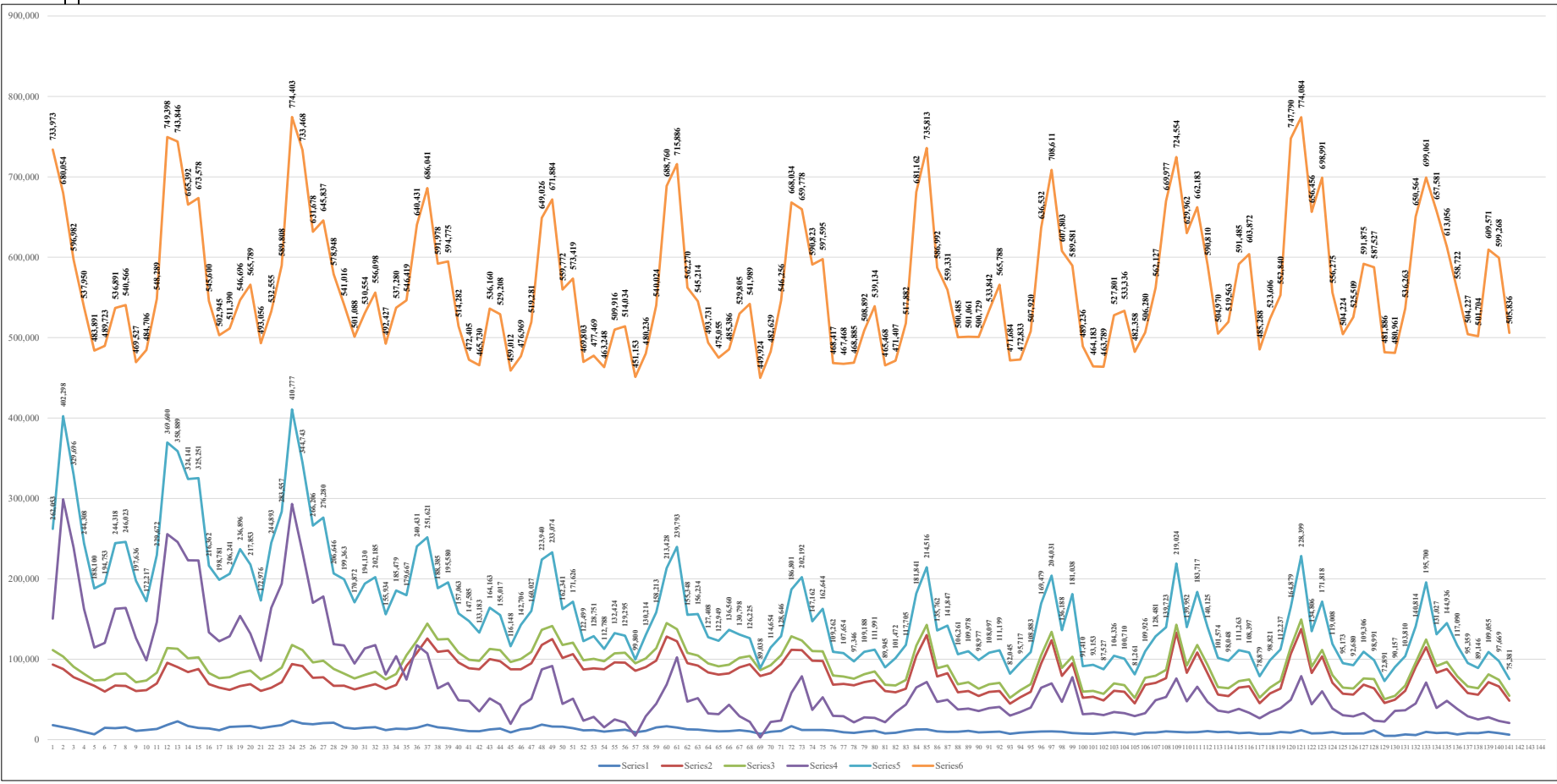
	Janar	Shkurt	Mars	Prill	Maj	Qershor	Korrik	Gusht	Shtator	Tetor	Nentor	Dhjetor
1991	254.4	260.8	268.6	279.9	293.4	296.1	294.0	291.5	289.4	288.3	288.8	285.1
1992	278.0	274.1	268.0	278.8	281.0	279.6	275.2	268.7	263.9	271.4	281.9	280.6
1993	275.2	265.3	264.7	278.5	280.5	277.3	271.0	261.1	253.6	249.9	255.6	270.2
1994	254.4	260.8	268.6	279.9	293.4	296.1	294.0	291.5	289.4	288.3	288.8	285.1
1995	253.8	260.3	262.5	275.3	289.0	288.7	284.5	282.2	288.2	283.8	279.9	287.5
1996	287.1	288.7	286.5	294.7	295.8	293.1	287.6	282.2	285.1	284.3	289.2	291.3
1997	289.4	284.5	281.7	285.2	294.1	292.0	287.0	280.0	272.9	272.4	270.8	277.2
1998	273.7	270.0	265.2	278.9	288.1	287.4	281.8	277.6	276.0	277.1	279.0	277.1
1999	272.7	275.6	281.5	290.5	295.9	293.3	288.3	279.5	271.0	257.6	263.6	276.9
2000	276.4	276.7	276.8	286.9	286.6	280.1	273.5	267.5	261.6	248.4	249.3	252.1
2001	253.6	258.2	275.1	282.9	287.6	283.8	273.7	271.1	269.2	263.6	263.2	252.1
2002	245.3	247.1	252.6	264.0	268.6	271.3	270.1	267.8	274.3	286.1	285.3	284.0
2003	291.1	289.5	286.3	287.0	292.3	290.3	285.9	280.8	276.0	282.6	285.6	283.3
2004	284.7	290.8	293.4	296.0	296.2	296.2	293.1	286.3	281.1	280.0	286.1	288.0
2005	281.2	281.5	293.3	296.1	295.6	294.1	286.7	277.2	266.5	256.9	253.6	279.0
2006	283.5	288.6	294.4	295.9	296.5	295.9	293.8	290.2	285.3	278.7	266.2	256.2
2007	256.1	263.7	272.0	276.8	276.8	274.8	268.5	263.6	261.8	261.1	275.8	282.1
2008	285.1	289.7	290.9	295.5	295.3	295.7	294.3	288.6	283.9	280.9	285.2	286.5
2009	283.6	281.8	283.4	292.5	293.7	292.4	288.0	281.2	276.2	271.6	266.3	280.1
2010	290.1	289.2	293.9	296.0	296.3	294.4	291.8	288.6	284.9	285.2	284.3	287.5
2011	281.6	274.1	275.0	276.6	281.0	286.1	284.7	279.0	273.9	268.2	261.6	264.5
2012	265.8	274.1	262.0	280.2	293.4	294.4	288.4	280.4	261.4	261.6	269.0	276.6
2013	278.3	274.1	294.8	296.9	296.9	294.2	289.7	283.6	280.8	281.4	282.5	276.1
2014	275.1	274.1	274.6	285.3	292.9	294.9	291.7	286.8	285.5	285.0	284.8	286.3
2015	288.7	274.1	292.2	296.3	296.1	293.3	287.5	280.1	272.1	275.4	278.9	275.9
2016	289.9	274.1	291.8	296.5	296.2	295.6	290.5	285.4	283.3	288.4	288.9	281.6
2017	271.5	274.1	280.9	278.7	281.6	272.4	270.2	268.0	271.0	264.6	269.6	289.9
2018	289.7	274.1	295.0	296.5	296.4	296.0	294.0	287.5	277.9	270.2	266.5	267.3
2019	267.3	274.1	272.7	279.9	289.9	292.7	287.6	278.5	274.2	268.6	273.2	275.6
2020	271.6	272.0	283.5	288.6	293.6	291.7	284.6	276.5	273.5	274.1	268.7	272.7
2021	291.7	294.1	292.6	294.3	296.7	291.7	282.7	274.3	271.3	267.7	267.8	275.1
2022	270.7	268.3	260.7	282.5	289.0	288.0	281.5	270.4	271.4	267.9	281.7	291.7
2023	293.2	286.4	291.5	295.6	296.1	296.3	291.4	281.3	270.8			

	Janar	Shkurt	Mars	Prill	Maj	Qershor	Korrik	Gusht	Shtator	Tetor	Nentor	Dhjetor
2023	293.16	286.40	291.47	295.55	296.11	296.33	291.4	281.3	270.8			
Mesataria	275.50	276.90	279.82	286.48	290.68	289.53	284.98	279.25	275.33	273.34	274.52	277.52
Minimumi	245.3	247.1	252.6	264.0	268.6	271.3	270.1	261.1	253.6	248.4	249.3	252.1
Maksimumi	293.2	294.1	294.4	296.9	296.9	296.2	294.3	291.5	289.4	288.3	289.2	288.0

NIVELI I FIERZES GJATE 2023 KRAHESUAR ME (Min,Maks dhe Mesataren historike) (m)



	2012	2013	2014	2015	2016	2017	2018	2019	2020	2021	2022	2023
Humbjet teknike ne nvesticionet e TI	333,973	363,083	586,538	115,515	34,441	80,974						
Humbjet teknike ne zmat e shpërndarjes	800,054	892,798	298,934	103,888	93,875	54,946						
Humbjet teknike Totale	1,134,027	1,255,881	885,472	219,403	128,316	135,920						
Humbjet jo-teknike Totale	1,134,027	1,255,881	885,472	219,403	128,316	135,920						
Humbjet Totale	2,268,054	2,511,762	1,770,944	438,806	256,632	271,840						
ENERGJI TOTAL NE OSSHI	733,973	863,083	1,151,515	34,441	80,974							

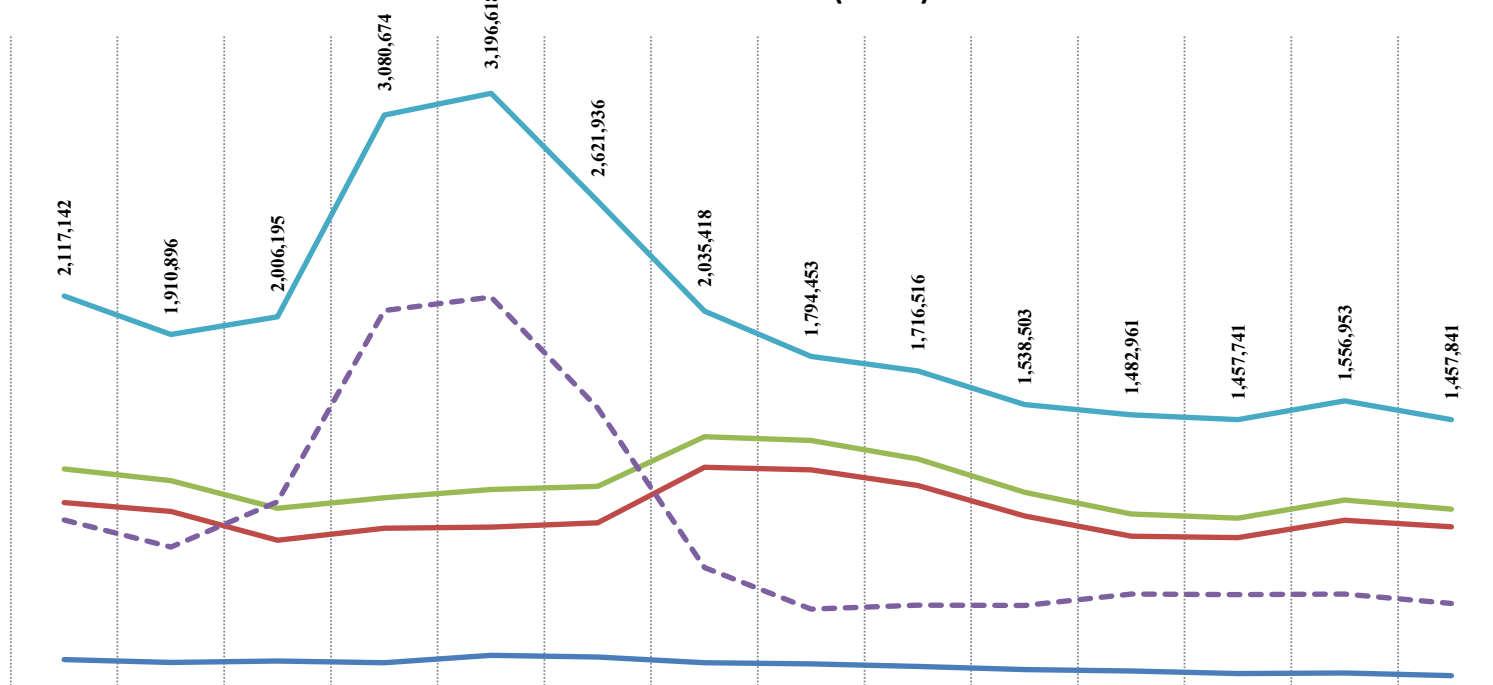


Burimi: OSSHI shtet / OSHEE Group shtet

HUMBJET NE RRJETIN E SHPERNDARJES 2009-2023(MWh)

	2009	2010	2011	2012	2013	2014	2015	2016	2017	2018	2019	2020	2021	2022	2023 (9-M)
HUMBJE TEKNIKE NE TL (N/ST)	178,738	163,546	170,937	161,831	201,684	193,208	162,725	155,629	141,707	125,974	117,739	103,729	107,340	93,331	73,418
HUMBJE TEKNIKE NE ZONAT E OSSH	1,015,450	968,535	814,826	879,616	884,360	908,416	1,203,793	1,190,872	1,106,007	944,587	836,561	828,906	921,330	886,682	658,543
TOTALI I HUMBJEVE TEKNIKE OSSH	1,194,188	1,132,081	985,763	1,041,447	1,086,044	1,101,624	1,366,518	1,346,501	1,247,714	1,070,560	954,300	932,635	1,028,670	980,013	731,961
HUMBJE JOTOKNIKE OSSH	922,954	778,815	1,020,432	2,039,227	2,110,575	1,520,312	668,900	447,952	468,802	467,943	528,661	525,106	528,283	477,828	323,402
TOTALI I HUMBJEVE OSSH	2,117,142	1,910,896	2,006,195	3,080,674	3,196,618	2,621,936	2,035,418	1,794,453	1,716,516	1,538,503	1,482,961	1,457,741	1,556,953	1,457,841	1,055,363

HUMBJET NE RRJETIN E SHPERNDARJES 2009-2022(MWh)



	2009	2010	2011	2012	2013	2014	2015	2016	2017	2018	2019	2020	2021	2022
HUMBJE TEKNIKE NE TL (N/ST)	178,738	163,546	170,937	161,831	201,684	193,208	162,725	155,629	141,707	125,974	117,739	103,729	107,340	93,331
HUMBJE TEKNIKE NE ZONAT E OSSH	1,015,450	968,535	814,826	879,616	884,360	908,416	1,203,793	1,190,872	1,106,007	944,587	836,561	828,906	921,330	886,682
TOTALI I HUMBJEVE TEKNIKE OSSH	1,194,188	1,132,081	985,763	1,041,447	1,086,044	1,101,624	1,366,518	1,346,501	1,247,714	1,070,560	954,300	932,635	1,028,670	980,013
HUMBJE JOTOKNIKE OSSH	922,954	778,815	1,020,432	2,039,227	2,110,575	1,520,312	668,900	447,952	468,802	467,943	528,661	525,106	528,283	477,828
TOTALI I HUMBJEVE OSSH	2,117,142	1,910,896	2,006,195	3,080,674	3,196,618	2,621,936	2,035,418	1,794,453	1,716,516	1,538,503	1,482,961	1,457,741	1,556,953	1,457,841

Burimi: OSSH sha / (OSHEE Group sha)

Viti 2014	Te arketueshme		Faturuar 2014	arketimi per faturat e 2014	Arketimi per faturat e 2007-2013	Arketimi total	Te Arketueshme per energjine e faturuar ne vitin 2014	Ndryshimi I gjendjes se Llogarive te arketueshme gjate vitit 2014	Shuarje Detyrimesh me VKM nr 198, dt 03.04.2014
	2	5							
	71,374,447								
Janar	72,385,326	4,899,949		3,593,288	295,782	3,889,070	1,306,661	1,010,880	0
Shkurt	73,231,148	4,623,941		1,224,858	2,553,261	3,778,119	3,399,083	845,821	0
Mars	73,905,562	4,645,564		3,226,836	744,315	3,971,150	1,418,729	674,414	0
Prill	70,676,446	4,538,921		3,291,530	680,634	3,972,164	1,247,391	3,229,116	3,795,873
Maj	71,544,530	4,190,118		3,345,044	374,413	3,719,457	845,074	868,084	(397,423)
Qershor	72,209,337	4,025,464		3,065,523	295,134	3,360,657	959,941	664,807	
Korrik	72,816,893	4,097,547		3,184,902	305,088	3,489,991	912,644	607,556	
Gusht	73,694,774	4,299,885		3,115,141	311,467	3,426,607	1,184,744	877,881	(4,604)
Shtator	72,527,145	4,065,705		3,343,188	1,069,912	4,413,100	722,518	1,167,630	820,235
Tetor	72,630,240	4,280,796		3,647,110	457,224	4,104,334	633,686	103,095	73,367
Nentor	72,771,144	4,504,528		3,459,192	904,432	4,363,624	1,045,356	140,994	
Dhjetor	71,406,047	4,985,556		4,273,473	2,077,180	6,350,653	712,083	1,365,097	
Total	53,157,974			38,770,084	10,068,842	48,838,927	14,387,890		4,287,448

FATURIM-ARKETIMET DHE NDRYSHIMI I GJENDJES DEBITORE GJATE VITIT 2015 (000/LEKE)

Viti 2015	Te arketueshme		Faturuar 2015	arketimi per faturat e 2015	Arketimi per faturat e 2007-2014	Arketimi total	Te Arketueshme per energjine e faturuar ne vitin 2015	Ndryshimi I gjendjes se Llogarive te arketueshme gjate vitit 2015	Shuarje Detyrimesh
	2	5							
	71,406,047								
Janar	65,787,460	2		58,385	5,560,203	5,618,588	(58,383)	5,618,586	0
Shkurt	59,101,173	2		4,241,484	2,444,805	6,686,289	(4,241,482)	6,686,287	0
Mars	53,303,725	2		4,663,802	1,133,648	5,797,450	(4,663,800)	5,797,448	0
Prin	47,139,425	2		4,476,298	366,900	4,843,198	(4,476,296)	6,174,301	1,337,105
Maj	40,663,646	2		4,234,873	584,756	4,719,629	(4,234,871)	6,465,778	1,726,151
Qershor	36,200,965	2		4,081,633	309,420	4,391,053	(4,081,631)	4,462,681	71,630
Korrik	31,391,091	2		4,246,167	372,576	4,618,743	(4,246,165)	4,809,874	191,133
Gusht	26,213,833	2		4,481,964	354,383	4,836,347	(4,481,962)	5,177,258	340,913
Shtator	21,220,540	2		4,700,033	293,262	4,993,295	(4,700,031)	4,993,293	0
Tetor	21,053,851	2		4,541,794	308,818	4,850,612	142,130	166,689	0
Nentor	21,726,696	2		4,020,208	298,490	4,318,698	971,335	672,845	0
Dhjetor	22,570,251	2		5,872,243	277,740	5,028,688	1,121,295	843,555	0
Total	15,547,727			48,491,589	12,225,002	60,716,591	32,943,862		3,666,932

FATURIM-ARKETIMET DHE NDRYSHIMI I GJENDJES DEBITORE GJATE VITIT 2016 (000/LEKE)

Viti 2016	Te arketueshme		Faturuar 2016	arketimi per faturat e 2016	Arketimi per faturat e 2007-2015	Arketimi total	Te Arketueshme per energjine e faturuar ne vitin 2016	Ndryshimi I gjendjes se Llogarive te arketueshme gjate vitit 2016	Shuarje Detyrimesh
	2	5							
	68,803,189								
Janar	69,383,532	2		5,987,971	11,010	5,396,619	5,407,628	5,976,962	580,343
Shkurt	69,618,271	2		5,445,503	3,744,680	1,455,075	5,199,755	1,700,824	234,739
Mars	69,927,158	2		5,131,517	4,673,435	531,195	5,204,630	840,082	308,887
Prill	69,788,727	2		4,826,977	4,641,557	323,851	4,965,408	185,420	138,431
Maj	67,042,795	2		4,855,733	4,504,256	4,584,256	4,781,174	331,477	2,745,932
Qershor	67,501,589	2		4,525,728	4,283,847	245,814	4,449,663	331,881	454,794
Korrik	68,121,673	2		5,241,459	4,390,083	331,293	4,621,376	851,376	620,884
Gusht	68,364,412	2		5,309,834	4,799,986	267,109	5,067,095	509,848	242,739
Shtator	68,350,354	2		4,344,483	4,650,851	207,690	4,858,541	193,633	14,058
Tetor	68,499,705	2		4,834,628	4,480,377	204,901	4,685,278	354,252	149,351
Nentor	69,372,496	2		5,236,378	4,175,054	188,533	4,363,587	1,061,324	872,791
Dhjetor	70,720,061	2		6,410,681	4,854,705	208,411	5,063,116	1,555,976	1,347,565
Total	63,012,893			49,129,839	49,129,839	9,537,411	58,667,251	13,883,054	2,800,490

FATURIM-ARKETIMET DHE NDRYSHIMI I GJENDJES DEBITORE GJATE VITIT 2017 (000/LEKE)

Viti 2017	Te arketueshme		Faturuar 2017	arketimi per faturat e 2017	Arketimi per faturat e 2007-2016	Arketimi total	Te Arketueshme per energjine e faturuar ne vitin 2017	Ndryshimi I gjendjes se Llogarive te arketueshme gjate vitit 2017	Shuarje Detyrimesh
	2	5							
	70,720,061								
Janar	71,449,571	2		6,192,711	2,680	5,460,521	5,463,201	6,190,031	729,510
Shkurt	71,348,179	2		5,323,527	3,823,606	1,601,313	5,424,919	1,499,921	101,392
Mars	70,863,992	2		5,141,318	4,963,971	661,534	5,625,505	177,347	484,187
Prill	70,863,942	2		4,857,464	4,525,615	331,899	4,857,514	331,849	50
Maj	70,398,535	2		4,667,810	4,599,520	533,697	5,133,217	68,290	465,407
Qershor	70,787,603	2		4,675,924	4,055,720	231,137	4,286,856	620,204	389,068
Korrik	71,320,868	2		5,435,009	4,599,634	302,110	4,901,744	835,375	533,265
Gusht	71,661,546	2		5,635,939	4,996,203	299,058	5,295,261	639,736	340,678
Shtator	71,152,866	2		4,824,463	5,046,489	286,834	5,333,323	222,026	508,860
Tetor	71,047,597	2		4,902,445	4,759,610	247,923	5,007,534	142,834	105,089
Nentor	72,034,534	2		5,537,306	4,313,657	299,723	4,543,379	1,213,649	983,937
Dhjetor	72,848,682	2		6,347,229	5,153,618	376,452	5,530,070	1,193,611	817,158
Total									

FATURIM-ARKETIMET DHE NDRYSHIMI I GJENDJES DEBITORE GJATE VITIT 2018 (000/LEKE)

Viti 2018	Te arketueshme		Faturuar 2018	arketimi per faturat e 2018	Arketimi per faturat e 2007-2017	Arketimi total	Te Arketueshme per energjine e faturuar ne vitin 2018	Ndryshimi I gjendjes se Llogarive te arketueshme gjate vitit 2018	Shuarje Detyrimesh
	2	5							
	72,848,682								
Janar	72,669,803	2		5,939,299	62,280	6,055,898	6,118,178	5,877,019	178,879
Shkurt	72,671,709	2		5,685,334	3,857,605	1,828,823	5,683,429	1,827,729	1,905
Mars	72,336,005	2		5,680,352	5,325,171	690,885	6,016,056	355,181	335,704
Prill	71,388,405	2		4,671,224	5,191,294	427,530	5,618,824	520,070	947,600
Maj	70,904,609	2		4,731,173	4,839,352	375,617	5,214,970	108,179	483,797
Qershor	71,142,033	2		4,976,161	4,395,221	343,516	4,738,737	580,940	237,425
Korrik	71,320,917	2		5,403,874	4,895,796	329,195	5,224,991	508,078	178,883
Gusht	71,608,055	2		5,805,751	5,141,751	376,861	5,518,612	664,000	287,139
Shtator	71,254,995	2		5,047,859	5,088,650	312,269	5,400,919	40,791	353,061
Tetor	70,741,012	2		4,975,893	5,162,026	327,849	5,489,875	186,133	513,982
Nentor	71,270,659	2		5,318,350	4,317,124	471,580	4,788,703	1,001,226	529,647
Dhjetor	71,896,770	2		6,625,289	5,579,121	420,120	5,999,241	1,046,168	626,048
Total									

FATURIM-ARKETIMET DHE NDRYSHIMI I GJENDJES DEBITORE GJATE VITIT 2019 (000/LEKE)

Viti 2019	Te arketueshme		Faturuar 2019	arketimi per faturat e 2019	Arketimi per faturat e 2007-2018	Arketimi total	Te Arketueshme per energjine e faturuar ne vitin 2019	Ndryshimi I gjendjes se Llogarive te arketueshme gjate vitit 2019	Shuarje Detyrimesh
	2	5							
	71,896,707								
Janar	72,594,758	2		6,710,114	11,908	6,000,155	6,012,063	6,698,206	698,051
Shkurt	72,200,340	2		5,819,929	4,371,736	1,842,611	6,214,348	1,448,193	394,418
Mars	71,887,840	2		5,496,920	5,066,376	743,045	5,809,420	430,545	312,500
Prill	71,416,559	2		5,155,722	5,183,086	443,917	5,627,003	27,364	471,281
Maj	71,210,144	2		5,075,626	4,909,283	372,758	5,282,041	166,343	206,415
Qershor	71,763,430	2		5,324,553	4,464,984	306,283	4,771,267	859,569	553,286
Korrik	71,886,698	2		5,684,531	5,061,596	499,667	5,561,263	622,935	123,268
Gusht	72,343,496	2		6,100,924	5,315,417	328,709	5,644,126	785,507	456,798
Shtator	71,822,038	2		5,207,417	5,446,625	282,250	5,728,875	239,208	521,458
Tetor	71,361,843	2		4,992,973	5,051,814	401,354	5,394,327	58,841	460,195
Nentor	72,178,116	2		5,292,443	4,247,863	228,307	4,476,170	1,044,580	816,273
Dhjetor	72,573,675	2		6,251,767	5,518,118	338,090	5,856,208	733,649	395,559
Total									

Korrik	73,865,820	5,588,061	4,444,694	282,993	4,727,687	1,143,367	860,374	0
Gusht	74,144,786	5,606,760	5,058,892	268,903	5,327,794	547,868	278,966	0
Shator	74,000,809	5,327,559	5,096,602	374,935	5,471,536	230,957	143,977	0
Tetor	73,790,738	5,174,314	5,025,382	359,002	5,533,316	148,932	210,070	0
Nentor	74,671,974	5,615,129	4,483,130	250,764	4,733,894	1,132,000	881,235	0
Dhjetor	75,609,639	6,641,071	5,412,845	290,561	5,703,406	1,228,226	937,665	0
Total								

FATURIM-ARKETIMET DHE NDRYSHIMI I GJENDJES DEBITORE GJTE VITIT 2021 (000/LEKE)

Viti 2021	Te arketueshme	Faturuar 2021	arketimi per faturat e 2021	Arketimi per faturat e 2007-2020	Arketimi total	Te Arketueshme per energjine e faturuar ne vitin 2021	Ndryshimi I gjendjes se Llogarive te arketueshme gjate vitit 2021	Shuarje Detyrimesh
	75,609,639	2	5	7	6=5+7	9=(2-5)		
Janar	76,272,477	6,400,370	19,639	5,717,893	5,737,532	6,380,731	662,838	0
Shkurt	76,826,391	6,245,453	3,770,254	1,921,284	5,691,538	2,475,198	553,914	0
Mars	76,605,803	6,158,373	5,690,524	688,438	6,378,961	467,849	220,588	0
Prill	76,818,750	5,817,548	5,302,816	301,785	5,604,601	514,732	212,947	0
Maj	76,122,770	5,190,837	5,558,138	328,680	5,886,818	367,301	695,980	0
Qershor	75,924,651	5,548,298	5,417,458	328,959	5,746,417	130,840	198,119	0
Korrik	76,924,743	6,377,974	5,853,270	324,612	5,777,882	1,324,705	1,000,093	0
Gusht	77,478,064	6,554,952	5,648,400	353,231	6,001,630	906,552	553,321	0
Shator	76,933,233	5,401,032	5,687,762	258,102	5,945,864	286,730	544,832	0
Tetor	76,284,525	5,544,032	5,739,826	452,913	6,192,739	195,794	648,707	0
Nentor	76,704,823	5,794,416	5,080,754	293,364	5,374,118	713,662	420,298	0
Dhjetor	78,394,397	7,572,744	5,583,186	299,984	5,883,170	1,989,557	1,689,574	0
Total								

FATURIM-ARKETIMET DHE NDRYSHIMI I GJENDJES DEBITORE GJTE VITIT 2022 (000/LEKE)

Viti 2022	Te arketueshme	Faturuar 2022	arketimi per faturat e 2022	Arketimi per faturat e 2007-2022	Arketimi total	Te Arketueshme per energjine e faturuar ne vitin 2022	Ndryshimi I gjendjes se Llogarive te arketueshme gjate vitit 2022	Shuarje Detyrimesh
	78,394,397	2	5	7	6=5+7	9=(2-5)		
Janar	79,437,476	7,902,272	4,793,436	2,065,757	6,859,193	3,108,836	1,043,079	0
Shkurt	80,288,829	7,515,728	4,569,541	2,094,835	6,664,376	2,946,187	851,353	0
Mars	80,426,273	7,857,071	6,691,413	1,028,214	7,719,627	1,165,658	137,444	0
Prill	79,617,380	6,186,945	6,531,117	464,721	6,995,838	344,172	808,893	0
Maj	79,499,359	6,188,303	5,969,488	336,836	6,306,324	218,815	118,021	0
Qershor	79,997,520	6,553,744	5,610,349	445,234	6,055,583	943,395	498,162	0
Korrik	80,005,681	6,553,744	6,230,846	314,737	6,545,583	322,898	8,161	0
Gusht	79,791,653	7,358,491	7,103,150	469,370	7,572,519	355,341	214,028	0
Shator	78,554,734	6,162,925	7,005,112	394,733	7,399,844	842,187	1,236,919	0
Tetor	77,962,798	5,848,663	6,104,850	335,749	6,440,598	256,187	591,935	0
Nentor	78,481,014	6,502,315	798,011	5,186,087	5,984,099	5,704,303	518,216	0
Dhjetor	79,249,438	7,458,986	6,200,688	489,874	6,690,562	1,258,298	768,423	0
Total		82,089,187			81,234,146			

FATURIM-ARKETIMET DHE NDRYSHIMI I GJENDJES DEBITORE GJTE VITIT 2023 (000/LEKE)

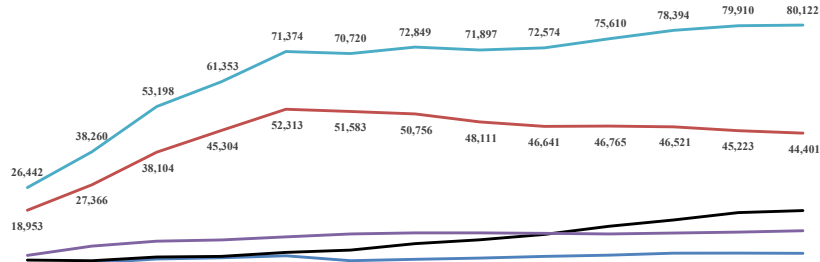
Viti 2023	Te arketueshme	Faturuar 2023	arketimi per faturat e 2023	Arketimi per faturat e 2007-2023	Arketimi total	Te Arketueshme per energjine e faturuar ne vitin 2023	Ndryshimi I gjendjes se Llogarive te arketueshme gjate vitit 2023	Shuarje Detyrimesh
	79,910,252	2	5	7	6=5+7	9=(2-5)		
Janar	80,265,490	7,236,860	17,571	6,864,050	6,881,621	7,219,288	355,238	0
Shkurt	80,928,747	7,477,014	4,674,206	2,139,553	6,813,758	2,802,809	663,256	0
Mars	80,025,935	6,588,875	6,660,084	831,603	7,491,687	71,209	902,812	0
Prill	80,223,225	6,321,511	5,757,211	367,010	6,124,221	564,300	197,290	0
Maj	79,402,801	5,993,172	6,505,113	308,483	6,813,596	511,941	820,424	0
Qershor	79,665,073	6,074,125	5,550,743	261,110	5,811,853	523,382	262,272	0
Korrik	81,307,082	7,326,635	5,416,995	267,632	5,684,626	1,909,640	1,642,009	0
Gusht	81,148,340	7,281,460	6,976,104	464,097	7,440,201	305,356	158,741	0
Shator	80,122,629	6,339,551	6,941,811	423,452	7,365,263	602,259	1,025,711	0
Tetor								
Nentor								
Dhjetor								
Total								

Burimi OSHEE sha

	31.12.2009	31.12.2010	31.12.2011	31.12.2012	31.12.2013	31.12.2016	31.12.2017	31.12.2018	31.12.2019	31.12.2020	31.12.2021	31.12.2022	30.09.2023
Buxhetore	988	1,538	2,841	3,223	3,886	2,264	2,741	3,157	3,681	4,104	4,761	4,787	4,708
Familjare	18,953	27,366	38,104	45,304	52,313	51,583	50,756	48,111	46,641	46,765	46,521	45,223	44,401
JoBuxhetore	2,468	2,269	3,516	3,688	5,026	5,776	7,904	9,183	10,947	13,641	15,720	18,188	18,836
Privat	4,033	7,086	8,738	9,138	10,149	11,098	11,447	11,446	11,304	11,100	11,393	11,712	12,177
Total	26,442	38,260	53,198	61,353	71,374	70,720	72,849	71,897	72,574	75,610	78,394	79,910	80,122

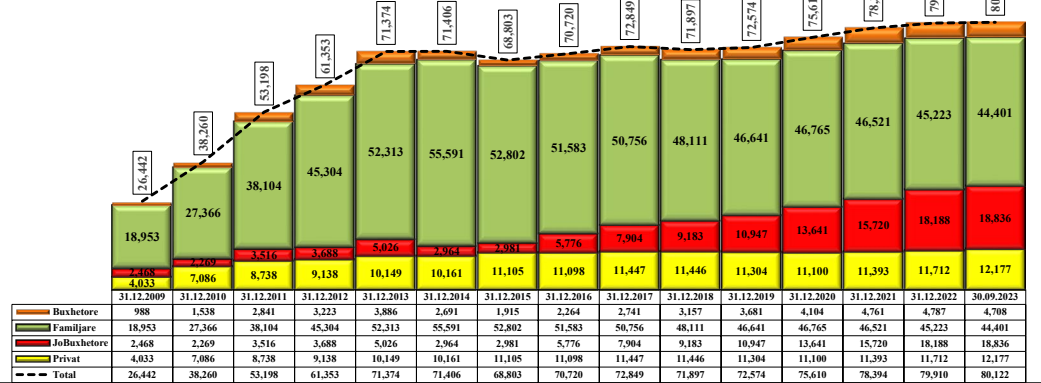
	31.12.2009	31.12.2010	31.12.2011	31.12.2012	31.12.2013	31.12.2014	31.12.2015	31.12.2016	31.12.2017	31.12.2018	31.12.2019	31.12.2020	31.12.2021	31.12.2022	30.09.2023
Privat	4,033	7,086	8,738	9,138	10,149	10,161	11,105	11,098	11,447	11,446	11,304	11,100	11,393	11,712	12,177
JoBuxhetore	2,468	2,269	3,516	3,688	5,026	2,964	2,981	5,776	7,904	9,183	10,947	13,641	15,720	18,188	18,836
Familjare	18,953	27,366	38,104	45,304	52,313	55,591	52,802	51,583	50,756	48,111	46,641	46,765	46,521	45,223	44,401
Buxhetore	988	1,538	2,841	3,223	3,886	2,691	1,915	2,264	2,741	3,157	3,681	4,104	4,761	4,787	4,708
Total	26,442	38,260	53,198	61,353	71,374	71,406	68,803	70,720	72,849	71,897	72,574	75,610	78,394	79,910	80,122

ECURIA E GJENDJES DEBITORE NDAJ OPERATORIT TE SHPERNDARJES
31 DHJETOR 2009 - 30 SHTATOR 2023 SIPAS KLIENTËVE
(000 000 LEKË)



	31.12.2009	31.12.2010	31.12.2011	31.12.2012	31.12.2013	31.12.2016	31.12.2017	31.12.2018	31.12.2019	31.12.2020	31.12.2021	31.12.2022	30.09.2023
Buxhetore	988	1,538	2,841	3,223	3,886	2,264	2,741	3,157	3,681	4,104	4,761	4,787	4,708
Familjare	18,953	27,366	38,104	45,304	52,313	51,583	50,756	48,111	46,641	46,765	46,521	45,223	44,401
JoBuxhetore	2,468	2,269	3,516	3,688	5,026	5,776	7,904	9,183	10,947	13,641	15,720	18,188	18,836
Privat	4,033	7,086	8,738	9,138	10,149	11,098	11,447	11,446	11,304	11,100	11,393	11,712	12,177
Total	26,442	38,260	53,198	61,353	71,374	70,720	72,849	71,897	72,574	75,610	78,394	79,910	80,122

ECURIA E GJENDJES DEBITORE NDAJ OPERATORIT TE SHPERNDARJES
31 DHJETOR 2009 - 30 SHTATOR 2023 SIPAS KLIENTËVE
(000 000 LEKË)



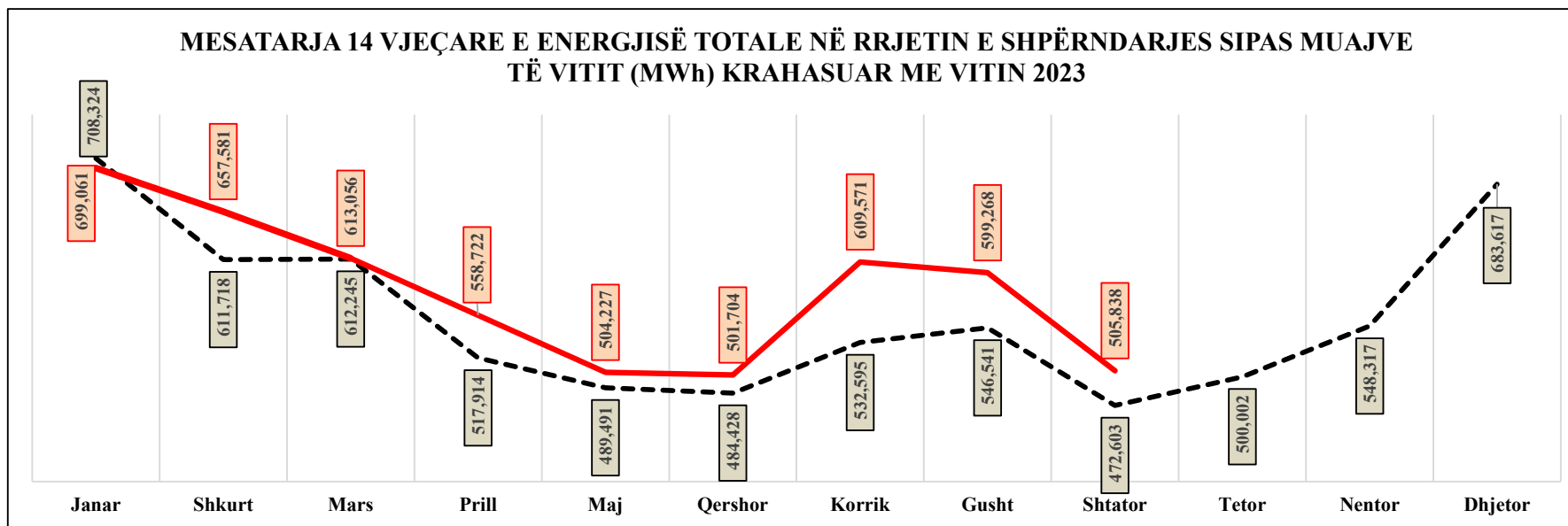
	31.12.2009	31.12.2010	31.12.2011	31.12.2012	31.12.2013	31.12.2014	31.12.2015	31.12.2016	31.12.2017	31.12.2018	31.12.2019	31.12.2020	31.12.2021	31.12.2022	30.09.2023
Buxhetore	988	1,538	2,841	3,223	3,886	2,691	1,915	2,264	2,741	3,157	3,681	4,104	4,761	4,787	4,708
Familjare	18,953	27,366	38,104	45,304	52,313	55,591	52,802	51,583	50,756	48,111	46,641	46,765	46,521	45,223	44,401
JoBuxhetore	2,468	2,269	3,516	3,688	5,026	2,964	2,981	5,776	7,904	9,183	10,947	13,641	15,720	18,188	18,836
Privat	4,033	7,086	8,738	9,138	10,149	10,161	11,105	11,098	11,447	11,446	11,304	11,100	11,393	11,712	12,177
Total	26,442	38,260	53,198	61,353	71,374	71,406	68,803	70,720	72,849	71,897	72,574	75,610	78,394	79,910	80,122

Burimi: FSHU sha / (OSHEE Group sha)

	Janar	Shkurt	Mars	Prill	Maj	Qershor	Korrik	Gusht	Shtator	Tetor	Nentor	Dhjetor	VITI
2009	644,987	568,719	589,279	462,709	448,118	427,694	467,863	493,772	439,604	489,635	557,554	639,797	6,229,731
2010	675,343	608,940	610,583	506,275	476,500	464,120	499,241	512,024	460,893	509,793	532,126	660,665	6,516,503
2011	708,264	623,208	634,087	536,286	533,564	495,139	545,315	567,282	512,979	551,132	619,655	710,870	7,037,781
2012	733,973	680,054	596,982	537,950	483,891	489,723	536,891	540,566	469,527	484,706	548,289	749,398	6,851,949
2013	743,846	665,392	673,578	545,600	502,945	511,390	546,696	565,789	493,056	532,555	589,808	774,403	7,145,060
2014	733,468	631,678	645,837	578,948	541,016	501,088	530,554	556,098	492,427	537,280	546,419	640,431	6,935,244
2015	686,041	591,978	594,775	514,282	472,405	465,730	536,160	529,208	459,012	476,969	519,281	649,026	6,494,867
2016	671,884	559,772	573,419	469,803	477,468	463,248	509,916	514,034	451,153	480,236	540,024	688,760	6,399,717
2017	715,886	562,270	545,214	493,731	475,055	485,386	529,805	543,145	451,103	482,629	546,256	667,841	6,498,322
2018	659,778	590,823	597,595	468,417	467,468	468,885	508,892	539,134	465,468	471,407	517,882	681,162	6,436,911
2019	735,813	586,992	559,331	500,485	501,061	500,729	533,842	565,788	471,684	472,833	507,920	639,953	6,576,432
2020	708,611	607,803	589,581	489,236	464,183	463,789	527,801	533,336	482,358	506,280	562,127	669,977	6,605,082
2021	724,554	629,962	662,183	590,810	504,970	519,563	591,485	603,872	485,288	523,606	552,840	747,790	7,136,936
2022	774,084	656,456	698,991	556,264	504,224	525,509	591,875	587,527	481,886	480,961	536,263	650,564	7,044,604
2023	699,061	657,581	613,056	558,722	504,227	501,704	609,571	599,268	505,838				

	Janar	Shkurt	Mars	Prill	Maj	Qershor	Korrik	Gusht	Shtator	Tetor	Nentor	Dhjetor
Mesatarja	708,324	611,718	612,245	517,914	489,491	484,428	532,595	546,541	472,603	500,002	548,317	683,617
2023	699,061	657,581	613,056	558,722	504,227	501,704	609,571	599,268	505,838			

MESATARJA 14 VJEÇARE E ENERGJISË TOTALE NË RRJETIN E SHPËRNDARJES SIPAS MUAJVE TË VITIT (MWh) KRAHASUAR ME VITIN 2023



NIVELI I HUMBJEVE (%) 2009-2023												
	Janar	Shkurt	Mars	Prill	Maj	Qershor	Korrik	Gusht	Shtator	Tetor	Nentor	Dhjetor
2009	40.75	37.05	38.05	32.93	33.44	30.75	32.60	30.20	25.34	30.67	33.44	36.89
2010	38.62	35.41	36.90	31.37	35.17	31.45	26.94	29.69	21.47	20.61	22.16	29.05
2011	55.55	38.00	36.95	23.11	24.85	21.29	21.88	19.41	22.95	25.15	32.20	35.70
2012	35.72	59.16	55.23	45.41	38.87	39.77	45.51	45.51	42.09	35.53	41.89	49.32
2013	51.12	48.71	48.29	39.66	39.52	40.33	43.33	38.50	35.08	45.98	48.08	53.04
2014	47.00	42.14	42.78	35.69	36.85	34.10	36.59	36.36	31.67	34.52	32.88	37.54
2015	36.68	31.82	32.88	30.54	31.24	28.60	30.62	29.29	25.30	29.92	30.82	34.50
2016	34.69	29.00	29.93	26.07	26.97	24.35	25.97	25.15	22.12	27.11	29.30	30.99
2017	33.50	27.63	28.66	25.81	25.88	28.31	24.69	23.29	19.79	23.76	23.55	27.90
2018	30.65	24.91	27.22	23.33	23.03	20.76	21.46	20.77	19.32	21.53	22.73	26.70
2019	29.25	23.21	26.5	21.36	22.10	19.92	20.42	19.81	17.54	20.40	21.58	24.76
2020	28.22	21.61	28.36	17.39	19.10	18.65	19.69	18.87	16.80	21.21	22.79	20.49
2021	27.87	20.1	25.92	21.08	17.92	18.34	18.75	17.93	16.22	18.56	19.88	20.25
2022	28.42	19.66	23.68	18.24	17.08	17.30	18.42	16.81	14.94	18.36	18.38	19.76
2023	25.79	19.06	21.05	18.65	16.68	16.04	17.48	16.17	14.80			

Niveli i Arketimeve (%) 2009-2023												
	Janar	Shkurt	Mars	Prill	Maj	Qershor	Korrik	Gusht	Shtator	Tetor	Nentor	Dhjetor
2009	69.32	85.95	74.38	86.58	86.31	76.37	75.40	72.46	83.20	80.82	61.77	70.01
2010	55.37	66.28	86.63	89.46	86.70	79.42	74.84	124.98	84.20	70.81	56.15	66.48
2011	67.26	57.61	87.66	71.61	96.73	73.00	65.00	81.00	66.00	63.86	51.47	87.30
2012	59.80	79.20	78.50	78.00	94.70	83.50	91.60	102.90	74.00	98.00	72.60	78.00
2013	61.40	63.70	86.20	80.70	79.10	69.60	87.90	90.10	78.50	84.30	89.00	102.00
2014	84.90	77.10	85.90	85.50	81.90	80.20	86.70	83.60	102.60	101.00	101.90	141.00
2015	112.70	120.50	103.70	86.60	95.70	97.10	98.40	104.70	95.30	100.30	92.20	100.70
2016	92.10	87.00	95.60	90.10	99.10	92.00	94.20	96.70	91.50	96.70	90.30	96.70
2017	85.20	87.60	105.70	94.50	105.70	91.80	104.80	97.40	94.60	103.80	92.70	100.10
2018	96.39	95.69	105.82	98.92	111.64	100.16	105.00	102.12	93.03	108.76	96.24	108.94
2019	90.7	92.6	99.8	102.4	102.50	94.00	104.40	99.30	93.90	104.70	89.60	110.70
2020	91.4	91.6	77.5	106.8	101.80	102.20	96.80	95.30	96.60	101.10	91.50	101.80
2021	86.4	88.9	102.1	91	101.20	110.70	96.90	94.10	90.70	114.70	96.90	101.50
2022	90.6	84.3	102.7	90.5	98.00	97.90	99.90	105.00	100.60	104.50	102.30	102.90
2023	92.3	94.2	100.2	92.9	113.7	95.70	93.60	101.60	101.20			

Efektiviteti i shitjeve (%) 2009-2022												
	Janar	Shkurt	Mars	Prill	Maj	Qershor	Korrik	Gusht	Shtator	Tetor	Nentor	Dhjetor
2009	41.1%	46.8%	53.6%	57.9%	50.8%	52.2%	48.8%	50.6%	62.1%	56.0%	41.1%	44.2%
2010	34.0%	56.0%	56.4%	59.5%	51.5%	51.3%	91.3%	87.9%	66.1%	56.2%	43.7%	47.2%
2011	29.9%	54.3%	45.2%	74.4%	54.9%	51.2%	63.3%	65.3%	50.9%	47.8%	34.9%	56.1%
2012	38.4%	32.1%	34.9%	51.7%	51.0%	55.2%	56.1%	56.1%	42.9%	63.2%	42.2%	39.5%
2013	30.0%	44.2%	41.7%	47.7%	42.1%	52.4%	51.1%	55.4%	51.0%	45.5%	46.2%	47.9%
2014	45.0%	49.7%	48.9%	52.7%	50.6%	57.1%	53.0%	53.2%	70.1%	66.1%	68.4%	88.1%
2015	71.4%	69.6%	60.2%	65.8%	69.3%	68.3%	72.6%	74.0%	71.2%	70.3%	63.8%	66.0%

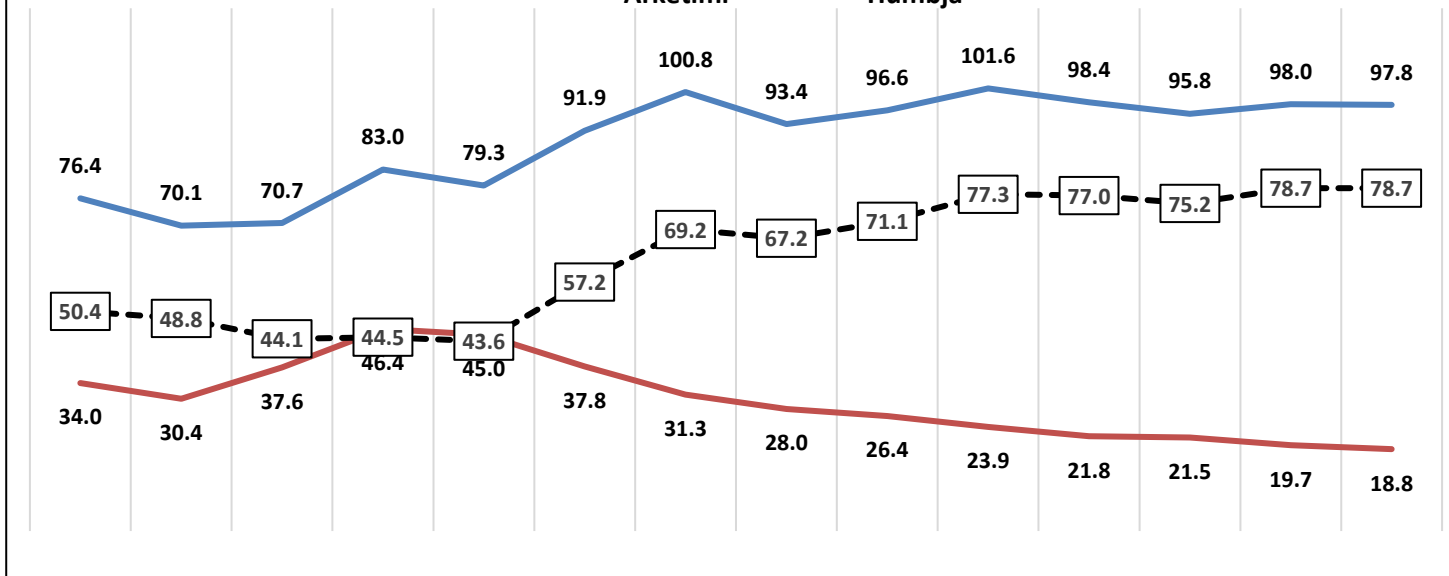
2016	60.2%	67.0%	66.6%	72.4%	69.6%	69.7%	71.6%	72.4%	71.3%	70.5%	63.8%	66.7%
2017	56.7%	75.4%	70.1%	78.3%	65.8%	78.9%	73.4%	74.7%	75.9%	79.1%	70.9%	72.2%
2018	66.8%	77.0%	75.8%	85.9%	79.4%	82.5%	80.2%	80.9%	75.1%	85.3%	74.4%	79.9%
2019	64.2%	73.4%	80.5%	79.8%	75.3%	83.1%	79.0%	79.6%	77.4%	83.3%	70.3%	83.3%
2020	65.6%	55.5%	88.2%	82.4%	83.1%	77.7%	76.5%	77.3%	80.4%	79.7%	70.6%	80.9%
2021	62.3%	75.6%	71.8%	83.1%	90.4%	78.7%	76.5%	77.2%	76.0%	93.4%	77.6%	80.9%
2022	64.9%	78.4%	74.0%	81.3%	81.0%	81.5%	85.7%	87.3%	85.6%	85.3%	83.5%	82.6%
2023	68.5%	76.2%	79.1%	75.6%	94.7%	80.3%	77.2%	85.2%	86.2%	0.0%	0.0%	0.0%

	2009	2010	2011	2012	2013	2014	2015	2016	2017	2018	2019	2020	2022	2023(9-m)
Arketimi	76.4	70.1	70.7	83.0	79.3	91.9	100.8	93.4	96.6	101.6	98.4	95.8	98.0	97.8
Humbja	34.0	30.4	37.6	46.4	45.0	37.8	31.3	28.0	26.4	23.9	21.8	21.5	19.7	18.8
Efektiviteti	50.4	48.8	44.1	44.5	43.6	57.2	69.2	67.2	71.1	77.3	77.0	75.2	78.7	78.7

Efektiviteti i shitjeve ne Sistemin e Shperndarjes (%)

2009-2023

Arketimi Humbja



ALOKIMI KAPACITETEVE 2023

Ankandi	Periudha	Shqiperi - Mali Zi						Shqiperi - Greqi						Shqiperi - Kosove											
		ATC e ofruar ne Ankand		ATC e shitur ne Ankand		Cmimi Ankandit		ATC e ofruar ne Ankand		ATC e shitur ne Ankand		Cmimi Ankandit		ATC e ofruar ne Ankand		ATC e shitur ne Ankand		Cmimi Ankandit							
		Export	Import	Export	Import	Export	Import	Export	Import	Export	Import	Export	Import	Export	Import	Export	Import	Export	Import						
		[MW]	[MW]	[MW]	[MW]	[Euro/MWh]	[Euro/MWh]	[MW]	[MW]	[MW]	[MW]	[Euro/MWh]	[Euro/MWh]	[MW]	[MW]	[MW]	[MW]	[Euro/MWh]	[Euro/MWh]						
Janar	01.01.2023-31.01.2023	150	100	150	100	3.14	1.62	200	150	200	150	3.05	3.55	200	200	200	200	1.28	0.92						
Shkurt	01.02.2023-28.02.2023	100	100	100	100	4.5	3.58	200	100	200	100	10.33	3.5	200	200	200	200	2.1	1.21						
Mars	01.03.2023-05.03.2023	100	100	100	100	2.77	2.21	200	200	200	200	8.22	0.63	200	200	200	200	1.44	0.88						
	06.03.2023-10.03.2023	50	50	50	50	4.44	3.88	100	100	98	97	8.22	0.63												
	11.03.2023-31.03.2023	100	100	100	100	2.77	2.21	200	200	200	200	8.22	0.63												
Prill	01.04.2023-02.04.2023	100	100	100	100	2.91	1.2	200	200	200	200	6.98	1.24	200	200	200	200	1.21	0.91						
	02.04.2023-03.04.2023							50	50	48	47	1.21	0.91												
	03.04.2023-04.04.2023																								
	04.04.2023-04.04.2023																								
	05.04.2023-11.04.2023																								
	12.04.2023-17.04.2023																								
	18.04.2023-18.04.2023													50	50	49	49	2.91	1.2	50	200	45	200	6.98	1.24
	19.04.2023-19.04.2023																								
	20.04.2023-28.04.2023													100	100	100	100	2.91	1.2	200	200	200	200	6.98	1.24
29.04.2023-30.04.2023	50	200	45	200	6.98																				
Maj	01.05.2023-01.05.2023		100		100	100	100	1.55	0.9	50	200	46	200	7.50	0.58	200	200	200	199	0.14	0.08				
	02.05.2023-06.05.2023	0		0						0	0														
	07.05.2023-21.05.2023	50		200						46	200														
	22.05.2023-31.05.2023	200								200															
	Qershor	01.06.2023-30.06.2023		100						100	100	100	2.31									1.75	200	200	200
Korrik	01.07.2023-31.07.2023	100	100	100	100	0.88	1.5	200	200	200	200	5.77	0.6	200	200	200	200	0.24	0.55						
Gusht	01.08.2023-22.08.2023	100	100	100	99	0.66	1.5	200	200	200	200	4.7	0.88	200	200	200	200	0.19	0.98						
	23.08.2023-24.08.2023													50	50	47	46	0.19	0.98						
	25.08.2023-31.08.2023													200	200	200	200	0.19	0.98						
Shtator	01.09.2023-25.09.2023	100	100	100	99	0.81	2.33	200	200	200	200	3.5	0.69	200	200	200	200	0.26	1.47						
	26.09.2023-30.09.2023							150	150	143	146	3.5	0.69												

Burimi OST sha

Disbalancat mujore [MWh] 2023 (9-MUJORI)

	JANAR		SHKURT		MARS		PRILL		MAJ		QERSHOR		KORRIK		GUSHT		SHTATOR		9-MUJORI 2023	
	Dis. Negative [MWh]	Dis. Positive [MWh]	Dis. Negative [MWh]	Dis. Positive [MWh]	Dis. Negative [MWh]	Dis. Positive [MWh]	Dis. Negative [MWh]	Dis. Positive [MWh]	Dis. Negative [MWh]	Dis. Positive [MWh]	Dis. Negative [MWh]	Dis. Positive [MWh]	Dis. Negative [MWh]	Dis. Positive [MWh]	Dis. Negative [MWh]	Dis. Positive [MWh]	Dis. Negative [MWh]	Dis. Positive [MWh]	Dis. Negative [MWh]	Dis. Positive [MWh]
Pale Pergjegjese Balancuese																				
KURUM INTERNATIONAL	923	304	257	22	210	26	535	278	1,338	259	988	296	216	71	193	182	176	92	4,837	1,531
DEVOLL HP	14	45	31	43	17	65	23	51	24	62	26	53	66	135	14	25	28	39	244	518
DRAGOBIA ENERGY	2	64	1	60	3	89	3	105	75	137	8	161	7	95	1	59	3	36	102	808
GEN-I							31	43					2						45	31
ENER TRADE	970	225	542	182	761	554	1,132	218	1,295	281	995	516	1,094	405	1,168	331	691	327	8,647	3,039
ENERGY 24	121	215	118	150	132	270	177	339											548	974
NOA	107	2	63	20	196	116	393	480	279	636	209	446	417	241	345	216	296	260	2,305	2,416
AYEN AS ENERGJI	306	125	144	75	140	115	85	80	132	69	88	74	82	115	82	28	75	35	1,133	715
GSA	125	1,641	760	151	1,681	490	1,499	30	1,871	173	1,945	94	4,465	24	2,971	257	2,449	165	17,767	3,025
Furnizuesi i Tregut të Lirë FTL (OSHEE Grup)	5,671	27,980	3,452	26,029	6,621	24,823	6,634	24,902	6,236	11,822	3,977	15,316	4,815	15,569	2,879	14,061	1,600	14,207	41,884	174,710
KESH (Pale Pergjegjese Balancuese)	3,574	2,150	761	1,797	349	3,128	702	2,801	756	1,936	2,740	1,822	580	1,512	1,049	1,211	443	1,691	10,955	18,047
EZ-5 ENERGY	126	126	178	45	288	110	221	182	291	224	344	139	268	42	238	50	224	95	2,176	1,011
KOSTT	12,947	2,032	10,885	2,448	9,005	4,090	8,371	4,996	5,256	6,941	2,938	7,811	6,288	5,525	6,940	4,124	6,733	3,467	69,364	41,435
KOSTT	1,322	2,661	332	2,987	1,975	1,457	1,117	1,616	1,781	1,933	1,285	863	2,326	655	1,680	1,314	1,201	1,328	13,019	14,815
Ofruesi i Sherbimit te Balancimit																				
Devoli HP Energjia Akt								2					6	42			2	103	8	147
Devoli HP Energjia Shtese Akt															3				-	3
KURUM INTERNATIONAL Energjia Akt									15	5									15	5
Ayen AS Energji Energjia Akt			170		319		84		197								258		1,028	-
Ayen AS Energji Energjia Shtese Akt																			-	-
KESH sh.a. Energjia Akt	10,340	4,943	11,233	3,901	9,882	7,363	10,554	5,985	7,702	5,204	9,165	2,640	8,014	6,865	7,242	6,156	7,228	1,691	81,360	44,748
KESH sh.a. Energjia Shtese Akt	9,453	3,510	8,201	3,047	7,597	2,608	7,992	2,857	3,209	1,629	3,904	798	2,114	1,593	2,274	350	3,279	3,928	48,023	20,319
TOTALI	46,000	46,023	37,129	40,957	39,177	45,304	39,520	44,951	30,501	31,310	28,612	31,030	30,760	32,892	27,075	28,364	24,687	27,465	303,462	328,298
Disbalancat mujore [MWh]		23		3,828		6,127		5,431		809		2,418		2,133		1,289	2,778			24,836

KLIENDET NE TL	KLIENDET E "KUALIFIKUAR" PER VITIN 2023												
	Energjia e faturuar ne [MWh]												
	Janar	Shkurt	Mars	Prill	Maj	Qershor	Korrik	Gusht	Shtator	Tetor	Nentor	Dhjetor	2023
EL220-L220KURUM/337	17,724	3,540	1,712	15,407	33,141	30,601	3,313	3,339	2,360				111,136
Titan T1,T2	9,331	4,543	7,006	10,642	11,097	10,636	11,282	10,350	5,451				80,338
FUSHE KRUIJE 220kV-T2/058	-	409	3,878	1,910	2,903	1,997	8,346	2,418	6,068				27,928
N/ST 220/6,3Colacent-T1/336	631	910	2,421	1,371	1,130	2,168	1,619	216	1,922				12,387
N/ST i GSA EL 110kV-T1/694	10,555	15,188	-	-	-	-	-	-	0				25,742
N/ST i GSA EL 110kV-T2/960	-	219	15,779	16,873	17,440	16,979	17,438	17,030	17,081				118,839
N/ST I CWI Albania T1/148	477	464	469	574.19	516	484	162	294	372				3,812
N/ST i AES EL 110kV-T1/690	30	48	-	-	1,491	6,969	7,274	7,290	3,460				26,563
N/ST I AES EL 110kV-T2/692	111	84	1,175	6,722	5,719	-	-	6	3,636				17,453
HEC Moglice T1,T2,T3	1	2	3	1	2.29	2	0.6	0.9	1				14
HEC Peshqesh-T1/633	7	20	4	3.52	6	20	31	32	30				155
Lajthiza T1/742	19	61	1	0.77	8	138	448	381	378				1,434
HEC Ashta1-T1,HEC Ashta2-T1,	0.13	-	-	0.00	-	-	-	0.00	0				0
HEC Banje T1,T2	14	14	18	15	25	18	21	18	20				163
HEC Fang-T1,T2.	10	27	19	36	34	48	52	47	23				295
Gjenerim KURUM	9.11	0	1	16.25	0.93	7	8	47	43				132
FERRO KROM-F1,F2,F3,F4	60	57	200	6,272	6,528	6,474	7,038	6,969	6,619				40,216
TOTAL	38,979	25,586	32,684	59,843	80,042	76,540	57,032	48,438	47,464				466,607

Burimi: OST sha

Devijimet nga programi interkoneksionit 2023 (9-mujori)

Minus = Hyrje		Plus = Dalje											
Data	Janar	Shkurt	Mars	Prill	Maj	Qershorr	Korrik	Gusht	Shtator	Tetor	Nentor	Dhjetor	2023
1	94	-18	44	54	165	120	67	-61	13				478
2	156	93	189	297	37	166	1728	28	75				2,769
3	-25	202	54	105	168	108	-79	-40	158				652
4	0	92	-47	-74	77	200	-23	51	312				589
5	126	57	-57	65	251	303	198	554	74				1,571
6	69	10	85	-33	73	199	120	1141	31				1,694
7	-18	-185	256	49	271	28	20	223	57				699
8	8	31	213	114	200	203	168	101	144				1,182
9	7	147	52	-20	-9	108	165	-20	33				462
10	482	268	400	-64	76	10	-101	-254	88				904
11	-26	8	997	206	7	122	63	-33	217				1,561
12	131	-3	410	192	63	36	189	-115	-174				730
13	128	200	267	214	-82	233	147	3	-45				1,065
14	-1,084	805	67	465	-91	337	15	24	131				669
15	-41	143	-621	221	477	123	-126	-84	-192				-100
16	-1,634	194	40	142	363	440	26	-34	-892				-1,355
17	738	280	13	-16	131	646	-324	14	-184				1,298
18	213	166	182	326	150	527	-145	234	26				1,678
19	682	337	157	360	3	323	48	11	-39				1,882
20	787	155	199	155	25	-8	-30	240	52				1,575
21	259	4	243	591	18	-196	-35	125	9				1,018
22	138	-292	164	303	103	-694	-27	49	107				-148
23	234	74	252	357	194	-1,971	346	-10	9				-516
24	587	189	102	280	-15	54	-80	129	163				1,409
25	-134	142	222	567	256	267	-303	460	824				2,300
26	-30	459	202	477	121	-37	-129	-20	461				1,504
27	139	873	302	392	141	90	385	115	-143				2,294
28	25	134	493	289	384	576	421	49	188				2,559
29	-246	0	27	79	136	225	-48	208	101				482
30	98	0	223	406	158	212	-52	43	134				1,223
31	118	0	396	0	51	0	-39	-10					516
Total	1,983	4,564	5,524	6,498	3,904	2,747	2,568	3,020	1736				32,544

Burimi OST sha

Transaksionet e energjisë elektrike të Pjesëmarrësve të Tregut në [MWh] për 2023

Nr.	Subjekti	Lloji transaksionit	Janar	Shkurt	Mars	Prill	Maj	Qershor	Korrik	Gusht	Shtator	Total [MWh]	
1	DEVOLLI HP	AL-GR Greece - IN	-1,465	-2,358	-1,733	-5,362	-1,278	-1,802	-6,072	-7514	-11,909	-39,493	
		AL-KS Kosovo - IN	0	0	0	0	0	0	0	0	0	0	
		AL-ME Monte Negro - IN	-21,339	-9,995	-11,607	-5,826	-17,106	-6,505	-13,029	-10,538	-4,170	-100,175	
		Total IN	-22,804	-12,353	-13,400	-11,188	-18,384	-8,307	-19,101	-18,052	-18,052	-16,079	-139,668
		AL-GR Greece - OUT	35,337	25,063	21,932	12,633	15,522	18,169	22,226	14,592	9,177	174,651	
		AL-KS Kosovo - OUT	0	0	0	0	0	0	0	0	0	0	
		AL-ME Monte Negro - OUT	36,517	39,169	41,265	34,421	23,001	48,389	21,780	18,007	29,482	292,031	
		Total OUT	71,854	64,232	63,197	47,054	38,523	66,558	44,006	32,599	38,659	466,682	
		Total Prodhimi	49,050	51,879	49,797	35,866	19,878	58,505	24,965	14,547	22,580	327,067	
		Total Prodhim	49,050	51,879	49,797								327,067
		Blerje AVEN Energy Trading						-261					-261
		Blerje GEN-I							270	60			330
		Total transaksione	0	0	0	0	-261	254	0	0	0	0	53
2	AYEN Energy Trading	AL-GR Greece - IN	0	0	-471	-1,076	-706	-1,623	-875	-731	-359	-5,841	
		AL-KS Kosovo - IN	0	0	0	-725	-4,585	-7,084	-10,825	-8,271	-7,118	-38,608	
		AL-ME Monte Negro - IN	0	0	-1,999	-2,677	-3,294	-1,684	-1,694	-1,294	-185	-12,827	
		Total IN	0	0	-2,470	-4,478	-8,585	-10,391	-13,394	-10,296	-7,662	-57,276	
		AL-GR Greece - OUT	3,612	0	0	63	0	469	0	193	0	4,337	
		AL-KS Kosovo - OUT	0	0	144	927	417	0	686	827	161	3,162	
		AL-ME Monte Negro - OUT	1,023	0	1	313	3,182	0	455	0	0	4,974	
		Total OUT	4,635	0	145	1,303	3,599	0	1,610	1,020	161	12,473	
		Total Prodhimi	4,635	-146	574	-3,275	-6,281	-3,954	-1,612	-1,460	-8,881	-25,795	
		Blerje AVEN AS Energi						74				265	
		Shitje Kurum International			265								265
		Blerje KESH											-1,023
		Blerje EZ-S ENERGY											-1,287
		Shitje EZ-S ENERGY											688
		Blerje Danske Commodities											-10
		Shitje Danske Commodities											5
		Shitje DEVOLI HP											261
		Blerje KESH											-4,980
		Shitje KESH											240
		Shitje GEN-I											100
		Shitje NOA ENERGY TRADE											85
		Blerje NOA ENERGY TRADE											146
		Shitje FUTURE ENERGY TRADING AND EXCHANGE DYNAMICS											-562
Total transaksione	-4,635	0	2,325	3,175	4,986	10,391	11,784	9,276	7,501	44,803			
3	AYEN AS Energi	AL-GR Greece - IN	0	0	0	0	0	0	0	0	0	0	
		AL-KS Kosovo - IN	-218	0	0	0	0	0	0	0	0	0	
		AL-ME Monte Negro - IN	-2,825	-642	-871	-501	-1,257	-1,199	-79	-21	-550	-6,945	
		Total IN	-3,043	-642	-871	-501	-1,266	-1,199	-79	-21	-550	-7,172	
		AL-GR Greece - OUT	12,744	13,755	23,945	15,152	2,141	2,383	3,357	4,110	5,563	83,150	
		AL-KS Kosovo - OUT	17,954	1,591	28	1,735	5,840	871	140	2,913	4,571	36,043	
		AL-ME Monte Negro - OUT	24,163	13,598	22,000	13,291	13,941	4,317	1,513	1,643	5,011	99,480	
		Total OUT	54,861	28,944	46,273	30,178	21,922	7,571	5,013	8,666	15,145	218,673	
		Total Prodhimi	55,430.0	28,448.0	46,075.6	32,952.0	26,863.0	11,326.0	6,545.8	10,115.5	19,476.0	237,227.9	
		Total Prodhim	55,430.0	28,448.0	46,075.6	32,952.0	26,863.0	11,326.0	6,545.8	10,115.5	19,476.0	237,227.9	
		Shitje AVEN Energy Trading											3,612
		Blerje AVEN Energy Trading											146
		Shitje FUTURE ENERGY TRADING AND EXCHANGE DYNAMICS											574
Shitje EZ-S ENERGY											3,275		
Total transaksione	3,612	146	574	3,275	6,207	3,954	1,612	6,348	4,881	25,727			
4	ENERGI ASHTA	AL-GR Greece - IN	0	0	0	0	0	0	0	0	0	0	
		AL-KS Kosovo - IN	0	0	0	0	0	0	0	0	0	0	
		AL-ME Monte Negro - IN	0	0	0	0	0	0	0	0	0	0	
		Total IN	0	0	0	0	0	0	0	0	0	0	
		AL-GR Greece - OUT	0	0	0	0	0	0	0	0	0	0	
		AL-KS Kosovo - OUT	0	0	0	0	0	0	0	0	0	0	
		AL-ME Monte Negro - OUT	0	0	0	0	0	0	0	0	0	0	
		Total OUT	0	0	0	0	0	0	0	0	0	0	
		Total Prodhimi	35,398	29,792	21,378	20,285	28,274	19,965	18,551	21,528	18,467	213,638	
		Total Prodhim	35,398	29,792	21,378	20,285	28,274	19,965	18,551	21,528	18,467	213,638	
		Shitje FTL											35,398
		Total transaksione	35,398	29,792	21,378	20,285	28,274	19,965	18,551	21,528	18,467	213,638	
		5	GEN-I	AL-GR Greece - IN	-130	-2,683	-5,380	-2,377	-789	-13,233	-2,331	-4,724	-13,559
AL-KS Kosovo - IN	-27,677			-24,048	-11,081	-22,804	-19,182	-17,814	-38,686	-24,919	-8,540	-194,023	
AL-ME Monte Negro - IN	-16,619			-6,754	-30,870	-13,928	-8,259	-18,581	-16,852	-10,670	-130,695		
Total IN	-44,426			-33,485	-47,331	-39,109	-28,230	-39,209	-68,773	-45,767	-32,769	-369,924	
AL-GR Greece - OUT	49,462			22,447	35,862	27,762	25,146	32,475	51,059	31,536	16,026	282,752	
AL-KS Kosovo - OUT	1,185			2,199	5,452	3,577	1,549	9,157	929	1,083	6,139	32,070	
AL-ME Monte Negro - OUT	7,018			14,869	6,017	7,739	2,058	15,255	5,357	5,143	8,804	72,260	
Total OUT	57,665			39,515	47,331	39,078	28,753	47,887	57,345	38,562	30,969	387,105	
Total Prodhimi	57,665			39,515	47,331	39,078	28,753	47,887	57,345	38,562	30,969	387,105	
Blerje KESH													-13,199
Shitje KESH													4,000
Blerje KURUM													-40
Blerje AVEN Energy Trading													-85
Shitje ENER TRADE											5		
Shitje DEVOLI HP											-330		
Shitje DEVOLI HP											16		
Total transaksione	-13,239	-6,030	0	0	-480	-8,678	2,400	7,200	1,800	-17,167			
6	GSA	AL-GR Greece - IN	0	-2,116	-4,791	-710	0	-3,331	-300	-498	-1,360	-13,006	
		AL-KS Kosovo - IN	-17,880	-27,492	-33,503	-22,545	-31,204	-24,294	-53,403	-42,320	-30,528	-283,149	
		AL-ME Monte Negro - IN	-13,000	-4,928	-5,431	-11,786	-11,798	-2,750	-24,107	-5,256	-12,103	-91,159	
		Total IN	-30,880	-34,536	-43,725	-35,041	-43,002	-30,275	-77,810	-48,074	-43,991	-387,334	
		AL-GR Greece - OUT	50,355	20,238	20,405	16,730	19,743	26,516	27,362	27,362	2,763	204,864	
		AL-KS Kosovo - OUT	21,678	500	3,067	0	4,396	13,994	0	0	41	43,676	
		AL-ME Monte Negro - OUT	4,500	366	0	297	579	2,802	18,728	450	1,280	29,402	
		Total OUT	76,933	21,104	23,472	17,027	24,718	37,548	45,244	27,812	4,084	277,942	
		Total Prodhimi	12,148	16,068	20,253	18,014	19,396	19,367	23,406	17,262	23,107	169,211	
		Blerje KESH											-57,281
		Shitje KESH											-2,636
		Blerje ENER TRADE											-1,600
		Blerje KURUM											21,488
Total transaksione	-46,053	13,432	20,253	18,014	18,284	-7,273	32,566	20,262	39,907	109,392			
7	DANSKE COMMODITIES	AL-GR Greece - IN	-257	-5,541	-4,741	-5,370	-795	-8,357	-11,717	-17,825	-21,696	-76,299	
		AL-KS Kosovo - IN	-20,925	-4,157	-6,623	-8,649	-8,113	-17,414	-16,250	-13,002	-9,812	-104,945	
		AL-ME Monte Negro - IN	-8,356	-16,297	-13,186	-12,881	-2,255	-7,579	-17,810	-9,633	-14,796	-102,793	
		Total IN	-29,538	-25,995	-24,550	-26,900	-11,163	-33,350	-45,777	-40,460	-46,304	-284,037	
		AL-GR Greece - OUT	18,926	19,060	14,639	14,281	1						

18	ADA Solar SE sh.p.k	Shkëmbime Cross-Border	AL-ME Monte Negro - IN	-266	0	0	0	-125	-126	-114	-2,102	-739	-3,472	
			Total IN	-337	0	-149	-60	-125	-1,381	-114	-4,239	-5,193	-11,598	
			AL-GR Greece - OUT	266	0	0	0	125	126	114	2,497	739	3,867	
			AL-KS Kosovo - OUT	0	0	0	0	0	0	0	0	0	0	
			AL-ME Monte Negro - OUT	71	0	149	60	0	1,255	0	1,742	4,454	7,231	
		Total OUT	337	0	149	60	125	1,381	114	4,239	5,193	11,598		
		Transaksionet e brendshme	-	0	0	0	0	0	0	0	0	0	0	
		Total transaksione	0	0	0	0	0	0	0	0	0	0	0	
		19	DRAGOBIA ENERGY	Shkëmbime Cross-Border	AL-GR Greece - IN	0	0	0	0	0	0	0	0	0
AL-KS Kosovo - IN	0				0	0	0	0	0	0	0	0	0	
AL-ME Monte Negro - IN	0				0	0	0	0	0	0	0	0	0	
Total IN	0				0	0	0	0	0	0	0	0	0	
AL-GR Greece - OUT	0				0	0	0	0	0	0	0	0	0	
AL-KS Kosovo - OUT	0			0	0	0	0	0	0	0	0	0		
AL-ME Monte Negro - OUT	0			0	0	0	0	0	0	0	0	0		
Total OUT	0			0	0	0	0	0	0	0	0	0		
Prodhimi	8,481			4,189	7,593	7,280	14,471	8,808	3,415	1,352	240	55,828.69		
Total Prodhim	8,481.3			4,189.0	7,592.7	7,280.1	14,470.7	8,807.5	3,414.9	1,352.2	240.4	55,828.69		
Shirje FTL	8,481	4,189	7,593	7,280	14,471	8,808	3,415	1,352	240	55,828.69				
Total transaksione	25,444	12,567	22,778	21,840	43,412	26,423	10,245	4,056	721	55,828.69				
20	ENERGY 24	Shkëmbime Cross-Border	AL-GR Greece - IN	0	0	0	0	0	0	0	0	0	0	
			AL-KS Kosovo - IN	0	0	0	0	0	0	0	0	0	0	
			AL-ME Monte Negro - IN	0	0	0	0	0	0	0	0	0	0	
			Total IN	0	0	0	0	0	0	0	0	0	0	
			AL-GR Greece - OUT	0	0	0	0	0	0	0	0	0	0	
		AL-KS Kosovo - OUT	148	6	29	13						196		
		AL-ME Monte Negro - OUT	561	1,191	1,081	986						3,819		
		Total OUT	709	1,197	1,110	999	0	0	0	0	0	4,015		
		Prodhimi	709	1,197	1,110	999	0	0	0	0	0	4,015.00		
		Total Prodhim	709.0	1,197.0	1,110.0	999.0	0.0	0.0	0.0	0.0	0.0	4,015.00		
Transaksionet e brendshme	-	0	0	0	0	0	0	0	0	0				
Total transaksione	0	0	0	1,998	0	0	0	0	0	0				
21	FUTURE ENERGY TRADING AND EXCHANGE DYNAMICS	Shkëmbime Cross-Border	AL-GR Greece - IN	0	0	0	0	0	0	0	0	0	0	
			AL-KS Kosovo - IN	-1,257	0	0	0	0	0	-28	-803	-3,678	-5,766	
			AL-ME Monte Negro - IN	0	0	0	0	0	0	-12	-52	0	-64	
			Total IN	0	-1,257	0	0	0	0	-40	-855	-3,678	-5,830	
			AL-GR Greece - OUT	1,257	0	0	0	0	0	0	744	3,360	5,361	
		AL-KS Kosovo - OUT	0	0	0	0	0	0	69	170	0	239		
		AL-ME Monte Negro - OUT	0	0	0	0	0	0	0	0	0	0		
		Total OUT	0	1,257	0	0	0	0	69	914	3,360	5,600		
		Blerje ALPEX								-57	-166	-6	-229	
		Shirje ALPEX								282	112	37	177	
Shirje Ayen Energy Trading											0			
Blerje Ayen Energy Trading									0		0			
Shirje PROINFINT CONSULTING										288	288			
Shirje Ayen AS Energji											0			
Blerje Ayen AS Energji								-0.2	-6		-6			
Total transaksione	0	0	0	0	0	0	-29	-61	320	230				
22	PROINFINT CONSULTING	Shkëmbime Cross-Border	AL-GR Greece - IN	0	0	0	0	0	0	0	0	0	0	
			AL-KS Kosovo - IN	0	0	0	0	0	0	0	0	0	0	
			AL-ME Monte Negro - IN	0	0	0	0	0	0	0	0	0	0	
			Total IN	0	0	0	0	0	0	0	0	0	0	
			AL-GR Greece - OUT	0	0	0	0	0	0	0	0	0	0	
		AL-KS Kosovo - OUT	0	0	0	0	0	0	0	0	0	0		
		AL-ME Monte Negro - OUT	0	0	0	0	0	0	0	0	0	0		
		Total OUT	0	0	0	0	0	0	0	0	0	0		
		Transaksionet e brendshme	Blerje FUTURE ENERGY TRADING AND EXCHANGE DYNAMICS									-288	-288	
		Shirje KESH										288	288	
Total transaksione	0	0	0	0	0	0	0	0	0	0				
23	KESH sh.a.	Shkëmbime Cross-Border	AL-GR Greece - IN	0	0	0	0	4,324	0	0	0	4,324		
			AL-KS Kosovo - IN	-1,110	-398	0	-1,622	0	0	33,317	35,393	-23,368	42,212	
			AL-ME Monte Negro - IN	0	0	0	0	0	0	28,440	51,967	-22,800	57,607	
			Total IN	-1,110	-398	0	-1,622	0	4,324	61,757	87,260	-46,168	104,143	
			AL-GR Greece - OUT	2,984	4,320	0	0	13,439	9,807	0	0	0	30,550	
		AL-KS Kosovo - OUT	104,406	58,084	8,238	9,969	60,440	24,840	7,446	6,579	322	280,224		
		AL-ME Monte Negro - OUT	2,912	2,137	0	30,879	16,953	0	0	0	0	52,881		
		Total OUT	110,302	64,541	8,238	9,969	104,758	51,600	7,446	6,579	322	363,755		
		Shirje FTL	437,601	500,638	328,749	245,165	135,078	190,059	433,389	488,767	410,742	3,170,188		
		Blerje Ayen Energy Trading							-100		-972	-1,072		
Shirje Ayen Energy Trading	1,023				4,980	240				6,243				
Blerje Danske Commodities	3,600	8,250			43,680		-13,940		-6,840	-20,780				
Shirje Danske Commodities										55,530				
Blerje GSA	57,381	2,636			21,000	26,640	-9,160	-3,000	-16,800	-28,960				
Shirje GSA										107,657				
Blerje ReNRGY							-1,406			-1,406				
Shirje ReNRGY	627	696								1,323				
Blerje GEN-I							-2,400	-7,200	-1,800	-11,400				
Shirje GEN-I	13,199	6,030			480	8,424				28,133				
Blerje Tirana International Development							-30,090	-5,820		-35,910				
Shirje Tirana International Development	27,458	3,600			10,740					41,798				
Blerje EZ-S ENERGY		1,800			672	336				2,808				
Shirje NOA ENERGY			-2,311	-3,129		-5,822	-6,255	-4,320	-5,760	-31,424				
Blerje NOA ENERGY					10,740					10,740				
Shirje INFO Telecom					27,480	13,984				41,464				
Blerje ENER TRADE									-13,680	-13,680				
Shirje PROINFINT CONSULTING										-288				
Blerje EZ-S ENERGY										-900				
Shirje OST	26,555	19,765	19,015	7,125						72,460				
Shirje ALPEX				65,252	112,260	110,780	90,350	70,535	65,641	514,818				
Total transaksione	567,444	543,415	345,453	314,413	251,023	233,851	433,389	488,767	410,742	3,907,332				

Shënime:

1. Konsumtoret e kualifikuar per secilin subjekt ndryshojne cdo muaj ne varesi te kontratave te nenshtruar nga te dyja palet.
2. Shenja (-) eshte perdorur per energjine qe hyne ne rrjeti (blerje + import) adersa shenja (+) per energjine qe del nga rrjeti (shirje + eksport).
3. Cdo vlerë e sipershenuar eshte e nominuar - me program (jo faktike me matje)

Burimi OST sha

Regjistri Kombetar REMIT Shqiperi

Nr.	Vendi	Kodi i ECRB	Data e parafjaltes	Emri Ligjor i Kompanise	Forma Ligjore	Adresa e Kompanise (Zyrat Qendrore)	Qyteti ku ndodhet Kompania	ZIP Code	Kodi EIC i Kompanise	Kodi IBC i Kompanise	Kodi LEI i Kompanise	NIFT i Kompanise	Webste i kompanie	Webpage ku jant publikuar informacionet e brendshme
1	Shqiperi	ECRB-AL-202001054001	05.01.2022	GSA	SHPK	Njesia Bashkake Nr.5 Br. Ibrahim Rugova 64	Tirane	1019	22XGSA-N	SGSBAI.TX		616180011	www.gsa.al	www.gsa.al
2	Shqiperi	ECRB-AL-202001054002	25.02.2022	LEVA TIRANE	SHPK	Banka Shqiptare e Komercit, Bp. Haxhi Dzemal Sh. 27	Tirane	1000	23X-120100020	SGSBAI.TX		824120001	www.leva.com.al	www.leva.com.al
3	Shqiperi	ECRB-AL-202001061001	16.02.2022	AlbEcon Trading & Consulting	SHPK	Bruga "Vaso Pasha" No.20	Tirane	1001	54X-1-1001A-SBP	SGSBAI.TX		101291001	www.albicon.com	www.albicon.com
4	Shqiperi	ECRB-AL-202001061002	01.06.2022	Korporata Elektronizimit dhe Shitimit	SHIA	Bruga "Vlaka e Haxhiu"	Tirane	1023	23X-1-1001A-SPC-M	SGSBAI.TX		161812001	www.keshi.al	www.keshi.al
5	Shqiperi	ECRB-AL-202001061003	29.02.2022	NOA Energy Trade	SHPK	Bulevardi "Dëshmorët e Kombit" Kulla bashkake kati 2	Tirane	1001	23X-1-0003A-S-E	SGSBAI.TX		14220301A	www.noaenergy.al	www.noaenergy.al
6	Shqiperi	ECRB-AL-202001061004	25.02.2022	Oncenart e Sistemit te Transmetimit	SHIA	Autostrojta Tinas-Duresa KM 9 Kashar	Tirane	1051	10XAL-KESHU-J	SGSBAI.TX		82410101N	www.ona.al	www.ona.al
7	Shqiperi	ECRB-AL-202001184001	18.02.2022	INDO Telecom	SHPK	Bruga "Fak Kenge" Nr.1 Pallati kesa perball faksheut ekonomik	Tirane	1001	54X-1-1101N-IT1	SGSBAI.TX		82920200P	www.indotelecom.al	www.indotelecom.al
8	Shqiperi	ECRB-AL-202001184002	12.07.2021	ROSEVOY Trading Group	SHPK	Bruga "Dervish Hima" Nr.1 Tirane	Tirane	1010	54X-1018N-2018R	SGSBAI.TX		14181802N	www.rosevo.com	www.rosevo.com
9	Shqiperi	ECRB-AL-202001184003	18.02.2022	Tirana International Development	SHPK	Bruga "Sami Frasheri" Nr.5, Shkalla F. kati 1, Zyrat 9	Tirane	1001	54x-1-0101-TH-F	PUPPAL.TR		18247007R		
10	Shqiperi	ECRB-AL-202001184004	18.02.2022	ENBR TRADE	SHPK	Bruga e Elbasanit, Objekti Park Gate, Kati 1	Tirane	1001	54X-101E10911180	USAL.AL.TR	8945000X1HJLANDKZY22	18211807T		https://www.linkedin.com/company/enbr-trade-shpk/ny-company
11	Shqiperi	ECRB-AL-202001204001	08.02.2023	Energy Finematics Team Tirana	SHPK	Bruga Mungu Topuzi, Godina e Buresit ELBROKOL, Kati 3	Tirane	1001	54X-1E1-TIRANA-248			171810001	www.ef-team.com	
12	Shqiperi	ECRB-AL-202001204002	07.02.2023	Enesora 24	SHPK	Bruga Ismail Demeq Pali 11 Kati 2 (Pallati Telekom)	Tirane	1001	541-1011EN-248			191131002S		
13	Shqiperi	ECRB-AL-202001264001	16.02.2023	Future Energy Trading and Exchange Dynamics	SHPK	Bruga Bllat Golemi, Ndertesa 28 Hyzia 7 Ap.14	Tirane	1019	54-X-1-0101FED-J	SGSBAI.TX		M21421046C	www.futureenergy.com	
14	Shqiperi	ECRB-AL-202001264002	20.02.2023	Ayen AS Energi	SHIA	Bruga Papa Gjon Palli II, ABA Business Center.	Tirane	1001	23X-1-190416-A-N	SGSBAI.TX		L11731504A	http://www.ayen.com/it/	http://www.ayen.com/it/en/aven-as-energi-sha-amanduk
15	Shqiperi	ECRB-AL-202001264003	20.02.2022	Ayen Energy Trading	SHIA	Bruga Papa Gjon Palli II, ABA Business Center, Ap.40	Tirane	1001	23X-1-190416-A-N	SGSBAI.TX		L1213000E	http://www.ayen.com/it/	
16	Shqiperi	ECRB-AL-202001264004	22.02.2023	E2-S ENERGY	SHPK	Bruga Vateo Pasha, Pasuria me Nr. 3/64+1-7/2, Zona Kadastrale 8270	Tirane	1019	54X-11XK250319U	SGSBAI.TX		191325503D	https://www.e2-energy.com	https://www.e2-energy.com
17	Shqiperi	ECRB-AL-20200174001	17.02.2023	Devoll Hydropower	SHIA	ABA Business Center, Zyrat Nr. 1206, Rruga "Papa Gjon Palli II"	Tirane	1010	23X-150409-DHP5	SGSBAI.TX	52900FCSS8RQ18S88	K82418002C	https://www.devoll.al	https://www.devoll.al
18	Shqiperi	ECRB-AL-20200184001	10.03.2023	ENSCO Trading (Albania)	SHPK	Njesia Bashkake nr. 10, Rruga Bogdaneve, Vila nr. 22, nr. 2	Tirane	1019	54X-110ESA1019G	HYVEDEM591		19899025L	https://www.ensco.al	
19	Shqiperi	ECRB-AL-20200184002	16.03.2023	Lengarica & Energy	SHPK	Rruga Jul Variboba, Vila nr. 10, Tirane	Tirane	1022	54X-1-1010H-LENU	USAL.AL.TR		K8302602A	www.enshydro.al	
20	Shqiperi	ECRB-AL-20200184003	17.03.2023	FURNIZUESI I TREGUT TE LIRE	SHIA	Bulevardi "Gjegjri Fishta", Ndertesa Nr. 88, H. 1, Kati i IV, Njesia Administrative Nr. 7,	Tirane	1023	54X-1011 OFT0220P			181530029T	www.enhse.al	www.enhse.al
21	Shqiperi	ECRB-AL-20200184004	17.03.2023	KURUM INTERNATIONAL	SHIA	Rruga Ibrahim Rugova, pallati nr. 14 KT, "Green Park", Ap. nr.39, kati 6, Njesia Administrative Nr.5	Tirane	1001	23X-131115K1-1	SGSBAI.TX (BOP-FESEN BANK)		K02727230T	www.kurum.al	www.kurum.al
22	Shqiperi	ECRB-AL-20200184005	17.03.2023	Danske Commodities Albania	SHPK	Rruga Ibrahim Rugova, Sky Tower, Godina nr. 5, Kati 9, Zyrat 91	Tirane	1000	23X-121120DCALG	SGSBAI.TX		L21702005R	www.danskecommodities.com	
23	Shqiperi	ECRB-AL-20200184006	20.03.2023	Dragobita Energy	SHPK	Bruga "Papa Gjon Palli II", Ndertesa Nr. 12, ABA Business Center	Tirane	1010	54X-1111DRG-01W	SGSBAI.TX, PUPPAL.TR		K92025004T		
24	Shqiperi	ECRB-AL-20200184007	20.03.2023	Naturre Energj	SHPK	Bruga Prush Nr 48, Vaqar	Tirane	1041	54X-101-EN-11YRL	USAL.AL.TR		L72220033M	www.natureenergy.com	
25	Shqiperi	ECRB-AL-20200184008	20.03.2023	Furnizuesi i Sherbimit Universal	SHIA	Bulevardi "Gjegjri Fishta", Ndertesa Nr. 88, H. 1, Kati i 2, Njesia Administrative Nr. 7,	Tirane	1023	54X-0101P5H022Q			181530016L	www.fshu.al	
26	Shqiperi	ECRB-AL-20200184009	23.03.2023	LATHIZA INVEST	SHIA	Lapshë, Njesia Administrative Qullm	Fushë-Drizit	4402	54X-1-1011LW-E	PUPPAL.TR XXXX		19890202P	www.lathiza.al	
27	Shqiperi	ECRB-AL-20200184010	24.03.2023	Heci Bishnica 1 & 2	SHPK	Bllat, B.Çunt, E.T.C. kati IV, zyrat 5/2.	Tirane	1017	54X-1-10011HB12W	ALB4202112705000001002955860		K5240101S		
28	Shqiperi	ECRB-AL-20200184011	24.03.2023	Heci Tervoli	SHPK	Komuna Pishq Gresh	Tirane	3013	54X-1-21010HT-E	SGSBAI.TX		K73621202N	www.hecivervoli.com	www.hecivervoli.com
29	Shqiperi	ECRB-AL-20200184012	31.03.2023	Axso Albania	SHIA	Bruga e Rinartit, Tirana Business Park, Nd.07, Fushë Preze	Tirane	1020	23X-1-150330-AA-K	SGSBAI.TX	52990QZABTUMRS85885	K51628010V	www.axso.com	www.axso.com
30	Shqiperi	ECRB-AL-20200184013	31.03.2023	ADA SOLAR SH	SHPK	Bruga "Dervish Hima", Ada Tower	Tirane	1001	54X-1-0110DA025-6			141818060J		
31	Shqiperi	ECRB-AL-20200184014	06.04.2023	Oncenart e Sistemit te Shpandartjes	SHIA	Bulevardi "Gjegjri Fishta", Ndertesa 88, Kati V-Vijaja 1	Tirane	1023	54X-1010FT0220P	AL182121101600000000186653		181530018E	www.enhse.al	www.enhse.al
32	Shqiperi	ECRB-AL-20200184015	14.04.2023	G.S.K	SHPK	Bruga e Barikadave, Pasuria nr.5735-1-2 Zona Kadastrale 8360	Tirane	1010	54X-0101-G1SK-N	SGSBAI.TX		M0170503J		
33	Shqiperi	ECRB-AL-20200184016	11.05.2023	GIGI-SPA POWER	SHPK	Kohena e Kamzes, Pallati perballë shtetit Hyqen, Kati IV, Kashar	Tirane	1025	54X-HEC-LAPAD73	USAL.AL.TR		K8792021S		
34	Shqiperi	ECRB-AL-20200184017	11.05.2023	Faster Euro	SHPK	Kohena e Kamzes, Pallati perballë shtetit Hyqen, Kati IV, Kashar	Tirane	1025	54X-HEC-LUBA-009	USAL.AL.TR		K82531000Q		
35	Shqiperi	ECRB-AL-20200184018	15.05.2023	HICODORI 2001	SHPK	Bruga "Vaso Pasha", Godina 10, Hyzia 1, Ap. 6	Tirane	1057	54X-110-TE-ALU	AL8711110400000000114377		K42180106L		
36	Shqiperi	ECRB-AL-20200184019	24.05.2023	KROK MBRETE ENERGIJI	SHPK	Rrezidenca Olimpj, Kryqezimi i Rrugëve Laman Kaba dhe Prokop Mima,Shkalla 3	Tirane	1001	54X-101-KR-10-ES	CDISAL.TRXXX		12912601S		
37	Shqiperi	ECRB-AL-20200184020	12.06.2023	Pinnacle Consulting	SHPK	Njesia Bashkake Nr.5, Rr. Tash Dajqi, Zona Kadastrale 8300 Nr. Pasurite 6759-3-14, Kompleksi Kaka 2, Objekti 7, Shkalla 7, Kati 5	Tirane	1060	54X-PRC-1NSP-IN-B	SGSBAI.TXXXX		M2152501S	www.pinnacleconsulting.com	
38	Shqiperi	ECRB-AL-20230020-001	20.06.2023	Hydro Energy Sotira	SHPK	Elbasan Kusheve SOTIRE Godina 1 katebe e HEC-Qendrore Sotire Gramsh,zona kadastrale 3494 me nr.2465 7	Gramsh,Sotire		54X-1-011180-11-X	AL7620R108800002048935301 (EURO)		K97212802C	info@stryayshon.com	
39	Shqiperi	ECRB-AL-20200184021	12.07.2023	Albanian Green Energy	SHPK	Bruga "Abdi Toptani", Tore Driç,Apartmenti 61	Tirane	1001	54X-1-101AGEF	USAL.AL.TR010		K71624027U	www.azgreen.al	
40	Shqiperi	ECRB-AL-20200184022	12.07.2023	Balkan Green Energy	SHPK	Bruga "Abdi Toptani", Tore Driç,Apartmenti 61	Tirane	1001	54X-10001BGE-R	USAL.AL.TR010		K71624006M	www.azgreen.al	
41	Shqiperi	ECRB-AL-20200184023	12.07.2023	SOLE 24 DOOEL SHKUP	SHPK	Bulevardi "Dëshmorët e Kombit", Hotel Rogner, Kati II	Tirane	1001	54X-1-100-SOL-E-3	CDISAL.TRXXX		M1162502XC		
42	Shqiperi	ECRB-AL-20230711-1002	11.07.2023	Ibro Enerjia Pulla	SHPK	Lagja 17, Rr"Jalpa Bulbulja", Kompleksi Jodas, 2006	Durres		54X-1-0111EN-P-0	AL6220R10080000210677350Q (EURO)		L01305510P	ifpenergjia@ipulshpk@gmail.com	
43	Shqiperi	ECRB-AL-20200184024	11.07.2023	"Emakal"	SHPK	Lagja Okside, ZK4/3, Pasuria 208, Godina e Centralit 5 Njesia Bashkake nr 2	Gramsh	3301	54X-E-SHPK-1044	AL4820R10080000210677350U (ALL)		K2341801C		
44	Shqiperi	ECRB-AL-20200184025	11.07.2023	DE FERCO SHQIPERIA	SHPK	Bruga Myzevizit Kellca, Pallati AL-FAM, Shkati, Apartmenti 5 Njesia Bashkake nr 2	Tirane	1001	54X-1-0101U-SHQ-0	PUPPAL.TRXXX		191813010D	www.dfercoenergy.com	
45	Shqiperi	ECRB-AL-202009064001	06.09.2023	GLOBAL TECHNICAL MECHANICS	SHPK	Shiqen, Aevropoti 1 Kalesit	Kales	8502	54X-1-GLM-MEC-P	SGSBAI.TX		L17152802M		
46	Shqiperi	ECRB-AL-202009144001	14.09.2023	G & S ENERGY	SHPK	Bruga Kavajes, Nr. 151, Njesia Bashkake Nr.7, Tirane	Tirane	1023	54X-1-0111G-S-E	EMRPAI.TR		K82800095Q		
47	Shqiperi	ECRB-AL-202009144002	14.09.2023	HIC ILINDRE	SHPK	Bruga e Kavajes, Nr. 151, Njesia Bashkake Nr.7, Tirane	Tirane	1003	54X-1-L01-HEC-0	USAL.AL.TR		L21215013H		

Burimi: ERE