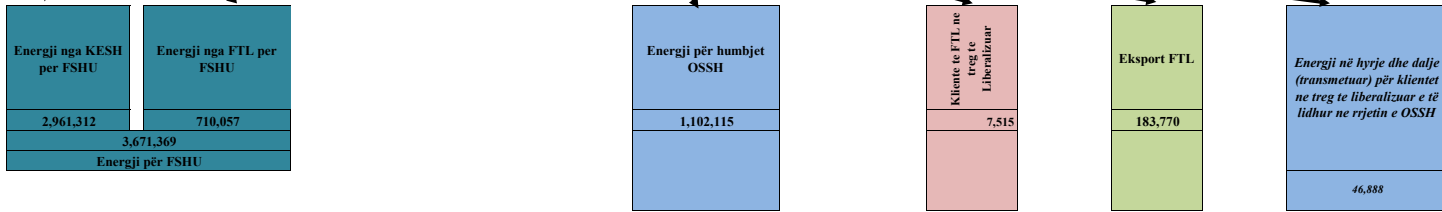


BILANCI ENERJITIK 8-MUJORI 2021 (MWh)

Prodhimi neto publik		Prodhuar nga PPE në rrjetin e OSSH			Prodhuar nga PPE në rrjetin e OST		Prodhues të pavarur					Prodhim neto vendas
Prodhimi Neto KESH sha		Neto (Selit)	HC.Priv/Kon në Rrjetin e OSSH për FTL	FOTOVOLTAIK	HC.Priv/Kon në Rrjetin e OST për FTL	Neto Ashta	Neto Banjla	Neto Magjica	Neto KURUM	H/C Peshqesh	H/C Fangu	
4,294,418		21,203	673,027	30,552	738,330	227,157	200,645	328,214	308,211	78,382	188,903	7,089,042
<small>Balanca e shëmbëtyrës në Interkoneksion Ballanca e shëmbëtyrës të brendshme OST/OSHEE) Shitje OST për tregtarë-konsumues vetjak Konsumuar nga Tec Hara Devizime nga Programi i Interkoneksionit Energji për shërbime ndihmësi/dribalancë</small>	1,333,106											
Energji për FSHU nga KESH sha		2,961,312										

Energji e siguruar nga FTL						
Blerje Neto (Selit)	Blerje HC.Priv/Kon në Rrjetin e OSSH për FTL	Blerje FOTOVOLTAIK	Blerje HC.Priv/Kon në Rrjetin e OST për FTL	Blerje Neto Ashta	Blerje në Treg të Liberalizuar nga FTL	nga ost Tec Ballsh
21,203	673,027	30,552	738,330	227,157	312,711	476
2,050,345						

Blerje nga ost për klientet në treg të liber.
46,888
1,399,661



Energji e konsumuar në Shqipëri
5,689,382

Burimi: OST sha; KESH sha; OSSH sha; FSHU sha; FTL sha; (OSHEE Group sha)

BILANCI ENERGJITIK I FTL sha, FSHU SHA DHE OSSH sha PER 8-MUJORIN 2021 (MWh)			
1	ENERGJI TOTALE E HYRE NE RRJETIN E OSSH-se	2+3+7.6	4,827,412
2	Energji e shitur nga KESH sha per FSHU sha		2,961,312
3	ENERGJI NE HYRJE E BLERE NGA FTL (OSHEE sha)	3.1+3.2+3.3+3.4	2,003,456
3.1	Blere nga Prodhimi i PPE në rrjetin e OSSH		724,782
3.2	Blere nga Prodhimi i PPE në rrjetin e OST		965,487
3.3	Blere ne Treg të Liberalizuar nga FTL sha		312,711
3.4	Transmetim nga Tec Ballshi		476
4	ENERGJI NE DALJE E SHITUR NGA FTL (OSHEE sha)	4.1+4.2+4.3+4.4+4.5	2,003,457
4.1	Energji nga FTL per FSHU		710,057
4.2	Energji nga FTL për humbjet OSSH		1,102,115
4.4	Energji e shitur nga FTL ne treg te liberalizuar		7,515
4.5	Eksport i FTL		183,770
5	ENERGJI NE HYRJE PER FSHU (OSHEE sha)	2+4.1	3,671,369
5.1	Energji Faktike nga KESH sha per FSHU sha	2	2,961,312
5.2	Energji nga FTL per FSHU	4.1	710,057
6	ENERGJI NE DALJE PER FSHU (OSHEE sha)	6.1 deri 6.14	3,671,377
6.1	Shitur Klienteve te Sherbimit Universal		3,639,421
6.11	Shitur klienteve Familiare		2,076,318
6.12	Shitur klienteve Private		1,167,139
6.13	Shitur klienteve Buxhetore		171,670
6.14	Shitur klienteve JoBuxhetore		224,294
6.2	Shitur Klienteve të mundesisë së Fundit		14,560
6.21	Shitur Klienteve FMF Privat (MWh)		976
6.22	Shitur Klienteve FMF JoBuxhetore(MWh)		13,584
	Shitur si dem Ekonomik		16,920
6.23	Shitur energjia e marre nga Tec Ballshi		476
7	ENERGJI QE KALON NE RRJETIN E OSSH-se	4.2+2+4.1+7.4+7.5+7.6	5,168,936
7.1	Energji nga FTL për humbjet OSSH		1,102,115
7.2	Energji Faktike nga KESH sha per FSHU sha		2,961,312
7.3	Energji nga FTL per FSHU		710,057
7.4	Energjia e ngitur ne rrjetin e transmetimit nga centralet e lidhura ne rrjetin e OSSH		327,465
7.5	Energji e furnizuar nga FTL për Kliente ne treg të liberalizuar (ne rrjetin e OSSH)		13,584
7.6	Energji vetem per tu transmetuar tek klientet ne treg te liberalizuar (ne rrjetin e OSSH)		46,888
7.7	Klienteve të FTL ne treg te liberalizuar		7,515
8	Humbje totale ne rrjetin e OSSH-se (%)	7.1 x 100 / 7	21.3

Burimi: OSSH sha; FSHU sha; FTL sha / (OSHEE Group sha)

Bilanci i Energjisë Elektrike për vitin 2021 (8-Mujori)

OST sha	Njësia e Matjes	Janar	Shkurt	Mars	Prill	Maj	Qershor	Korrik	Gusht	Shuma 2021 [MWh]
	MWh									
Prodhimi nga KESH GEN në Rrjetin e Transmetimit	1	648,222	651,567	590,022	521,278	553,158	482,334	492,645	355,192	4,294,418
Prodhimi nga HEC/HPP e vogla në Rrjetin e Transmetimit	2	61,299	66,197	46,597	74,064	61,795	14,939	1,909	665	327,465
Prodhimi nga PPE/IPP e mëdha në Rrjetin e Transmetimit	3	147,262	137,659	98,116	147,878	130,049	51,266	18,998	7,102	738,330
Prodhimi nga HEC Peshqesh	4	18,063	16,059	12,828	15,694	9,806	3,185	1,803	945	78,382
Prodhimi nga HEC Banja	5	37,952	43,734	31,179	27,835	23,432	11,455	14,200	10,858	200,645
Prodhimi nga HEC FANG	6	49,111	39,787	28,899	25,490	17,871	13,227	8,029	6,490	188,903
Prodhimi nga HEC Moglicë	7	35,215	77,681	60,372	41,383	49,480	13,893	28,487	21,703	328,214
Prodhimi nga HEC Ashta	8	36,275	33,478	31,720	28,965	31,404	24,725	23,679	16,911	227,157
Prodhimi nga KURUM (Ulez-Shkopet&Bistrica 1,2)	9	53,818	51,870	48,597	49,167	44,666	24,747	21,514	13,833	308,212
Eksperti (-) nga Linjat e Interkonjeksionit	D	367,668	479,008	299,881	334,456	390,409	199,095	155,784	83,482	2,309,783
Importi (+) nga Linjat e Interkonjeksionit	R	42,302	14,791	42,120	45,298	38,587	144,354	225,260	357,410	910,122
Balanca (Total Interkonjeksioni)	10=(R-D)	325,365	464,216	257,761	289,159	351,821	54,741	-69,475	-273,928	1,399,661
Energjia Totale në Marrje	11=(1+2+3+4+5+6+7+8+9+R)	1,129,520	1,132,825	990,450	977,050	960,248	784,124	836,524	791,109	7,601,849
Humbjet në Rrjetin e Transmetimit (përfshirë Nevojat Vetjake)	12	26,474	27,612	19,971	22,832	22,959	14,902	16,499	16,965	168,215
Humbjet në Rrjetin e Transmetimit %	13=12/11	2.34	2.44	2.02	2.34	2.39	1.90	1.97	2.14	2.21
Energjia Totale në Dhënie	14=(11-12)	1,103,046	1,105,213	970,478	954,218	937,288	769,222	820,025	774,144	7,433,634
<i>Transmetuar në Linjat e Interkonjeksionit</i>	15=D	367,668	479,008	299,881	334,456	390,409	199,095	155,784	83,482	2,309,783
<i>Transmetuar tek Klientët e Kualifikuar</i>		74,214	59,565	72,016	96,044	99,973	91,699	96,777	102,993	693,280
<i>EL220-L220KURUM/337</i>		31,422	24,419	13,837	33,251	35,512	33,794	33,860	31,829	237,923
<i>F.Arrez-T3/653</i>		1,166	957	1,432	881	1,158	711	1,148	1,337	8,790
<i>Titan T1,T2</i>		8,210	4,226	11,668	11,488	11,470	9,223	7,117	10,749	74,151
<i>FUSHE KRUJE 220kV-T2/058</i>		8,497	2,516	10,007	12,804	13,635	11,522	12,046	12,141	83,167
<i>N/ST 220/6,3Colacent-T1/336</i>		539	902	1,312	1,472	1,402	1,344	1,513	1,554	10,037
<i>N/ST i GSA EL 110kV-T1/694</i>		9,128	8,183	9,056	8,709	9,029	7,922	5,496	-	57,522
<i>N/ST i GSA EL 110kV-T2/960</i>		-	-	-	-	-	-	6,576	16,424	23,000
<i>N/ST i AES EL 110kV-T1/690</i>		7,374	6,447	7,060	7,050	7,370	6,874	7,426	7,415	57,017
<i>N/ST I AES EL 110kV-T2/692</i>		79	4,883	7,347	7,391	7,604	7,287	7,825	7,689	50,106
<i>HEC Moglice T1,T2,T3</i>		5	14	1	4	0.38	22	14	0	61
<i>HEC Peshqesh-T1/633</i>		3	2	4	0.38	4	29	38	34	115
<i>Lajthiza T1/742</i>		367	368	406	408	444	459	515	575	3,542
<i>HEC Ashta1-T1,HEC Ashta2-T1,</i>		-	-	-	0.15	-	-	-	0.01	0
<i>HEC Banje T1,T2</i>		6	2	11	13	16	25	20	24	117
<i>HEC Fang-T1,T2,</i>		1	8	25	25	34	26	32	19	171
<i>Gjerim KURUM</i>		3	1	1	0.42	-	14	28	34	81
<i>TEC Ballsh-T1/598</i>		73	62	68	62	56	51	52	53	476
<i>FERRO KROM-F1,F2,F3,F4</i>		7,413	6,638	9,847	12,549	12,295	12,447	13,122	13,168	87,480
<i>Transmetuar në rrjetin e Shpërndarjes</i>		661,092	566,578	598,514	523,656	446,851	478,376	567,411	587,616	4,430,095
<i>Transmetuar në rrjetin e Shpërndarjes 110 kV</i>		562,636	486,256	520,646	458,142	389,382	415,733	495,814	519,039	3,847,647
<i>Transmetuar në rrjetin e Shpërndarjes 35 kV</i>		50,014	38,067	38,702	33,459	27,996	31,426	37,908	38,387	295,959
<i>Transmetuar në rrjetin e Shpërndarjes 6, 10, 20 kV</i>		48,443	42,256	39,167	32,054	29,473	31,217	33,689	30,191	286,489

Burimi: OST sha;

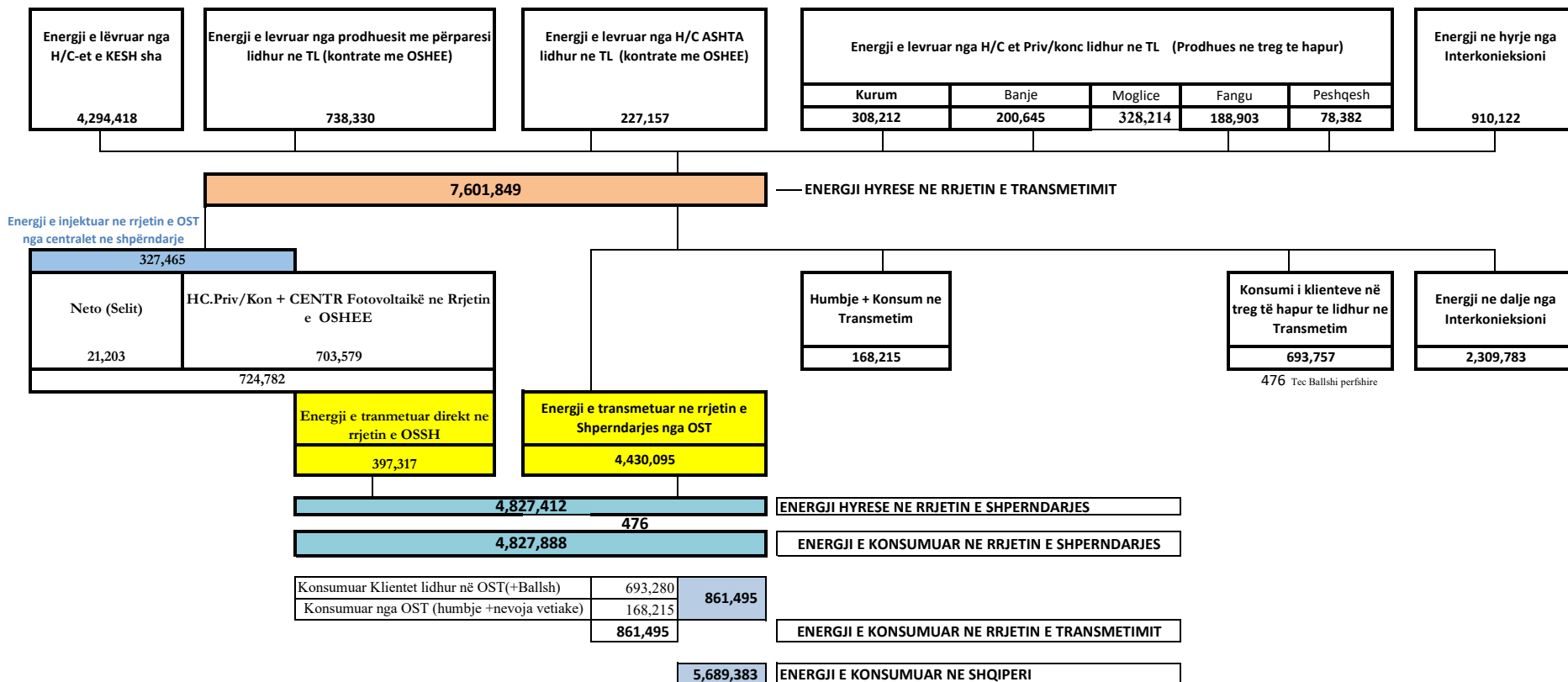
TË DHËNA MBI TRANSMETIMIN E ENERGJISË ELEKTRIKE NGA OPERATORI I SISTEMIT TE TRANSMETIMIT NË SHQIPËRI
e VITIT 2021 (MWh)

PËR 8-Mujorin

	Janar	Shkurt	Mars	Prill	Maj	Qershor	Korrik	Gusht	2021		
HYRJE	Dhene nga H/C e KESH ne rrjetin e Transmetimit	648,222	651,567	590,022	521,278	553,158	482,334	492,645	355,192	4,294,418	7,601,849
	Dhene nga H/C e me perparesi ne rrjetin e Transmetimit	147,262	137,659	98,116	147,878	130,049	51,266	18,998	7,102	738,330	
	Energji nga Hec-et Lokale levruar ne Rrjetin e Transmetimit (me ngritje)	61,299	66,197	46,597	74,064	61,795	14,939	1,909	665	327,465	
	Gjenerim KURUM (prodhues i pavarur)	53,818	51,870	48,597	49,167	44,666	24,747	21,514	13,833	308,212	
	HEC ASHTA (prodhues i pavarur Kontr.me OSHEE)	36,275	33,478	31,720	28,965	31,404	24,725	23,679	16,911	227,157	
	HEC BANJE (prodhues i pavarur)	37,952	43,734	31,179	27,835	23,432	11,455	14,200	10,858	200,645	
	HEC MOGLICE (prodhues i pavarur)	35,215	77,681	60,372	41,383	49,480	13,893	28,487	21,703	328,214	
	HEC PESHQESH-T1/637 (prodhues i pavarur)	18,063	16,059	12,828	15,694	9,806	3,185	1,803	945	78,382	
	HEC FANGU (prodhues i pavarur)	49,111	39,787	28,899	25,490	17,871	13,227	8,029	6,490	188,903	
	Importi(Hyre) nga Linjat e Interkonjeksionit	42,302	14,791	42,120	45,298	38,587	144,354	225,260	357,410	910,122	
DALJE	Humbjet ne Transmetim	26,474	27,612	19,971	22,832	22,959	14,902	16,499	16,965	168,215	7,601,849
	Transmetuar ne Rrjetin e Shperndarjes	661,092	566,578	598,514	523,656	446,851	478,376	567,411	587,616	4,430,095	
	Klientene treg te hapur (TL) (+Tec Ballsh)	74,286	59,627	72,083	96,106	100,029	91,750	96,829	103,046	693,757	
	Eksporti (Dale) nga Linjat e Interkonjeksionit	367,668	479,008	299,881	334,456	390,409	199,095	155,784	83,482	2,309,783	
Humbjet ne Transmetim	26,474	27,612	19,971	22,832	22,959	14,902	16,499	16,965	168,215		
Humbjet ne Transmetim ne %	2.34	2.44	2.02	2.34	2.39	1.90	1.97	2.14	2.21		

Burimi: OST sha; KESH sha; OSSH sha; FSHU sha; FTL sha; (OSHEE Group sha)

PARAQITJA SKEMATIKE E FLUKSEVE TE ENERGIJE NE SISTEMIN ELEKTRO-ENERGJITIK SHQIPETAR 8-mujori VITI 2021 (MWh)



LEGJENDA	
FSHU	FURNIZUES I SHËRBIMIT UNIVERSAL
FMF	FURNIZUES I MUNDËSISË SË FUNDIT

PRODHIMI NETO NE SHQIPERI	Janar	Shkurt	Mars	Prill	Maj	Qershor			8-M 2021
Prodhimi Neto KESH sha.	648,222	651,567	590,022	521,278	553,158	482,334	492,645	355,192	4,294,418
Hec-et Private dhe Konc. (Rrjeti Shperndarjes)	119,778	124,135	103,961	134,826	112,533	49,065	18,549	10,179	673,027
Hec-et Private dhe Konc. (Rrjeti Transmetimit)	147,262	137,659	98,116	147,878	130,049	51,266	18,998	7,102	738,330
HEC Ashta	36,275	33,478	31,720	28,965	31,404	24,725	23,679	16,911	227,157
Prodhimi Neto Hec Lanabregas	3,249	2,958	2,527	2,683	2,707	2,334	2,591	2,154	21,203
Prodhimi Neto (Hec Ulez,Shkopet,Bistrica 1,2)	53,818	51,870	48,597	49,167	44,666	24,747	21,514	13,833	308,212
Prodhimi Hec Peshqesh	18,063	16,059	12,828	15,694	9,806	3,185	1,803	945	78,382
Prodhimi Hec Fangu	49,111	39,787	28,899	25,490	17,871	13,227	8,029	6,490	188,903
Prodhimi Hec Banja	37,952	43,734	31,179	27,835	23,432	11,455	14,200	10,858	200,645
Prodhimi Hec Moglica	35,215	77,681	60,372	41,383	49,480	13,893	28,487	21,703	328,214
Prodhimi i Centraleve Fotovoltaike	1,734	2,488	3,779	3,708	4,674	4,724	4,844	4,588	30,538
ENERGJIA NETO E PRODHUAR NE SHQIPERI	1,150,680	1,181,417	1,011,999	998,906	979,779	680,954	635,339	449,955	7,089,030

ENERGJI NGA INTERKONEKSIONI	Janar	Shkurt	Mars	Prill	Maj	Qershor			8-M 2021
Energji ne dhenie nga Interkoneksioni	367,668	479,008	299,881	334,456	390,409	199,095	155,784	83,482	2,309,783
Energji ne marrje nga Interkoneksioni	42,302	14,791	42,120	45,298	38,587	144,354	225,260	357,410	910,122
Ballanca Hyrje/Dalje nga Interkoneksioni	325,365	464,216	257,761	289,159	351,821	54,741	-69,475	-273,928	1,399,661

KONSUMI I ENERGJISE NE SHQIPERI	8-M 2021
Konsumi i klientëve Tarifore	3,639,421
Konsumi i klientëve të furnizuar si FMF	14,560
Shitur klienteve si dem ekonomik	16,920
Konsumi i Klientëve që përdorin rrjetin për energji e blerë ne treg të liberalizuar	46,888
Energji për Klientet ne treg të liberalizuar lidhur në OSSH me furnizues FTL	7,515
Konsumi për mbulimin e humbjeve	1,102,115
Konsumuar nga klientet e lidhur në Tec Ballsh	467
Konsumuar nga Klientet e lidhur në OST	693,281
Konsumuar nga OST (humbje +nevoja vetiake)	168,215
KONSUMI TOTAL 2021 (8-mujori)	5,689,382

Burimi: OST sha; KESH sha; OSSH sha; FSHU sha; FTL sha; (OSHEE Group sha)

HEC Qarrishtë	0.3	"IDI-2005" SHPK	35kV	135	154	119	201	207	152	0	0	968
HEC Vendresh	0.456	"HP VENDRESH ENERGY" SHPK	35kV	148	181	143	134	81	4	0	0	692
HEC "Antena"	1.105	"DERBI-E" shpk	35kV	627	580	319	619	218	-	0	0	2,363
HEC "Kamenicë"	0.973	HP Kamenica shpk	10	570	535	240	437	251	104	50	28	2,215
HEC "Qytezë"	0.9	Muso hec Qytezë	10	294	341	236	338	210	95	40	17	1,571
HEC Marjan Gura e Vesheve	0.63	Marituda Shpk	10	145	157	116	224	402	204	69	15	1,332
HEC Skatinë	2.677	Skatina Hec Shpk	10	1,266	1,116	802	1,066	138	28	10	6	4,432
HEC Kapariel	0.2	ABV Konstruksion Shpk	10	28	14	56	62	60	44	40	33	336
HEC Letaj	0.54	Asi-Tre Shpk	10	201	184	126	177	99	42	10	0	838
HEC Nice	2.133	MP-HEC Shpk	35	392	534	279	427	218	38	38	30	1,956
HEC Meshurdhe	1.8	SIMA-Com Shpk	10	1,197	1,272	907	1,041	556	123	15	0	5,112
HEC Thanez	1.95	AFRIMI K Shpk	35	1,398	1,244	1,027	1,461	429	61	9	11	5,640
HEC OSOJE	1.9	OSOJA HPP shpk	35	1,446	1,310	1,419	1,366	1,345	841	221	156	8,105
Hec Voskopoje	1.9	FAVINA 1 shpk	35	1,322	1,327	1,005	1,031	451	272	110	91	5,608
Hec Nderfushas	1.34	SGD Energji shpk	35	393	327	206	485	310	29	0	0	1,750
Hec Rreshen	0.38	Nikolli Energy shpk	10	175	157	172	164	138	60	48	0	914
Hec Gurra	0.5	Uleza Nderim shpk	6	178	167	177	162	135	103	86	67	1,076
Hec Vile	1.994	Hydro Power Panaritit shpk	35	939	1,201	933	963	317	171	65	28	4,617
Hec Dukona	0.800	Dukona shpk	20	289	289	157	204	100	26	0	0	1,066
Hec Prevalli	1.750	Gega-G shpk	35	1,268	1,175	1,057	1,215	1,183	179	19	0	6,096
HEC Camerice	0.800	Rei Energy shpk	35	487	517	537	817	481	57	2	-	2,897
Hec Stroj	2.000	Era Hydro shpk	35	1,465	1,486	1,511	1,499	1,291	484	66	53	7,855
Hec Mivas	1.940	Elva 2001 shpk	35	423	993	1,050	1,110	610	148	5	-	4,340
Hec Spathare	1.038	Lucente concensionare shpk	10	377	649	724	436	621	327	103	18	3,254
Hec Miraka	0.600	Kuarci Blace shpk	10	285	332	206	207	85	21	0	0	1,135
Hec Shegju	2.000	Irarba Energji shpk	10	348	353	405	421	316	164	2	-	2,010
Hec Dobrunje	0.840	W.T.S. Energji shpk	10	212	222	269	320	453	339	57	0	1,872
Hec Muras	2	Mateo& Co shpk	10	156	676	816	1,244	1,168	1,048	76	0	5,184
Hec Trojjet	0.9	Trojjet Energji shpl	10	113	436	364	468	234	20	0	0	1,634
Hec Deni	0.85	ASI TRE shpk	35	380	374	225	413	166	37	32	11	1,637
Hec Kamican	1.86	IGI 2005 shpk	35	-	100	691	1,277	705	219	18	0	3,010
Hec Vardar	1.97	Gerti shpk	35	-	-	-	977	1,273	226	15	0	2,490
Hec Stavec	6.5	Koka Ergi Stavec shpk	35	-	-	-	2,065	3,050	1,279	353	331	7,078
Hec Kalis	2.13	ERDY Energy shpk	35	-	-	-	-	223	466	254	128	1,072
Hec Gjinar	0.83	Erdi Gas shpk	10	-	-	-	-	38	69	33	13	153
Hec Backa 1	3.36	Kroi Mbret shpk	35	-	-	-	-	811	644	3	-	1,458
Hec Plepi	2.28	Domi Tec shpk	35	-	-	-	-	154	41	4	-	200
Hec Zall Xhuxhe	4.7	Hec Zall Xhuxhe	35	-	-	-	-	267	461	237	13	978
Hec Pisha	1.9	Green TECH energy systems	35	-	-	-	-	-	-	2	0	2
	314			123,027	127,093	106,488	137,509	115,240	51,400	21,140	12,333	694,230

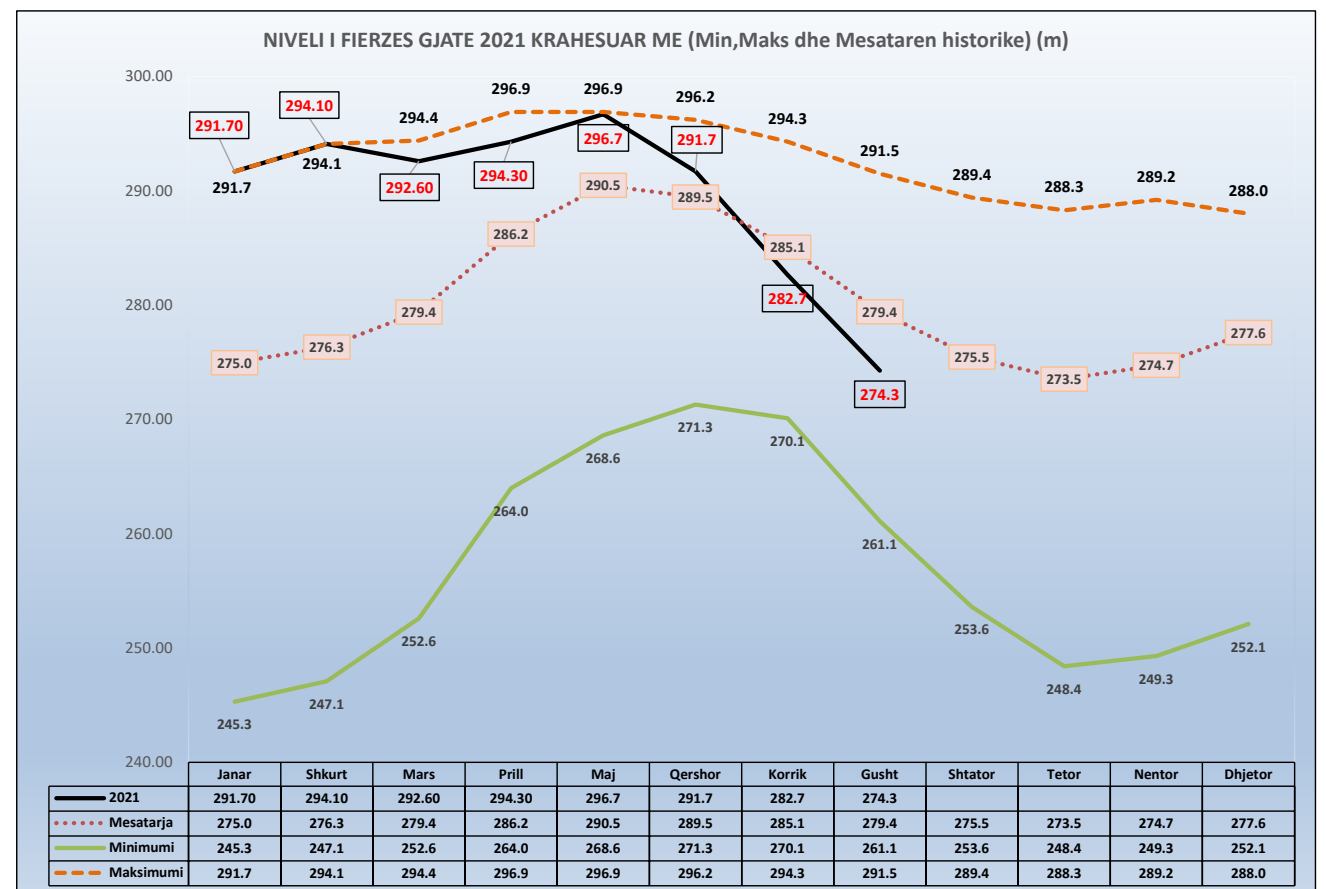
PRODIMI GJATE VITIT 2021 NGA CENTRALET FOTOVOLTAIKE TË LIDHURA NE RRJETIN E SHPERNDARJES (MWh)												
CENTRAL FOTOVOLTAIK	MW	SUBJEKTI	LIDHJA	JANAR	SHKURT	MARS	PRILL	MAJ	Qershor			8-M 2021
UKKO (pa sistemuarne sistem)	1	"UKKO"sha (Ujrsjell.Kanal.Korce)										
Seman - 2	2	"SEMAN2SUN" sh.p.k	35 kV	166	241	365	368	465	483	490	448	3,026
Topoje	2	"SONNE" sh.p.k	35 kV	165	240	368	368	464	480	485	444	3,013
Topojë 2	2	"AED SOLAR" sh.p.k	35 kV	165	239	430	304	463	478	484	443	3,006
Topojë (Sheq Marinas)	2	"AGE SUNPOWER" sh.p.k	35 kV	164	239	365	367	462	478	485	444	3,005
Topojë (Sheq Marinas) 2	2	"SEMAN SUNPOWER" sh.p.k	35 kV	167	243	370	371	467	483	489	448	3,037
Seman Isolar	2	"SEMANISOLAR" sh.p.k	35 kV	174	245	366	359	447	455	462	432	2,940
FV Lugano	2	ES 2019 sh.p.k	35 kV	187	271	414	385	476	488	505	471	3,197
FV SMART WATT	2	SMART WATT sh.p.k	35 kV	188	271	411	383	473	488	502	467	3,184
Tren Bilisht	2	"RTS" sh.p.k	35 kV	164	259	328	333	414	402	423	426	2,749
STATKRAFT Renewbles albani PV Lndrues banje	2	"STATKRAFT"	35 kV	0	0	0	0	0	13	0	0	13
Plug. Lushnje	2	"AEE" sh.p.k	10 kv	192	239	362	471	543	489	519	566	3,382
	23			1,734	2,488	3,779	3,708	4,674	4,737	4,844	4,588	30,552

Kapaciteti Instaluar i gjithe prodhuesve	2,588 MW	Prodhimi Vendas	7,089,044
--	-----------------	-----------------	------------------

Burimi: OST sha; KESH sha; OSSH sha; FSHU sha; FTL sha; (OSHEE Group sha)

	NIVELI I FIERZES 1991-2021											
	Janar	Shkurt	Mars	Prill	Maj	Qershor	Korrik	Gusht	Shtator	Tetor	Nentor	Dhjetor
1991	254.4	260.8	268.6	279.9	293.4	296.1	294.0	291.5	289.4	288.3	288.8	285.1
1992	278.0	274.1	268.0	278.8	281.0	279.6	275.2	268.7	263.9	271.4	281.9	280.6
1993	275.2	265.3	264.7	278.5	280.5	277.3	271.0	261.1	253.6	249.9	255.6	270.2
1994	254.4	260.8	268.6	279.9	293.4	296.1	294.0	291.5	289.4	288.3	288.8	285.1
1995	253.8	260.3	262.5	275.3	289.0	288.7	284.5	282.2	288.2	283.8	279.9	287.5
1996	287.1	288.7	286.5	294.7	295.8	293.1	287.6	282.2	285.1	284.3	289.2	291.3
1997	289.4	284.5	281.7	285.2	294.1	292.0	287.0	280.0	272.9	272.4	270.8	277.2
1998	273.7	270.0	265.2	278.9	288.1	287.4	281.8	277.6	276.0	277.1	279.0	277.1
1999	272.7	275.6	281.5	290.5	295.9	293.3	288.3	279.5	271.0	257.6	263.6	276.9
2000	276.4	276.7	276.8	286.9	286.6	280.1	273.5	267.5	261.6	248.4	249.3	252.1
2001	253.6	258.2	275.1	282.9	287.6	283.8	273.7	271.1	269.2	263.6	263.2	252.1
2002	245.3	247.1	252.6	264.0	268.6	271.3	270.1	267.8	274.3	286.1	285.3	284.0
2003	291.1	289.5	286.3	287.0	292.3	290.3	285.9	280.8	276.0	282.6	285.6	283.3
2004	284.7	290.8	293.4	296.0	296.2	296.2	293.1	286.3	281.1	280.0	286.1	288.0
2005	281.2	281.5	293.3	296.1	295.6	294.1	286.7	277.2	266.5	256.9	253.6	279.0
2006	283.5	288.6	294.4	295.9	296.5	295.9	293.8	290.2	285.3	278.7	266.2	256.2
2007	256.1	263.7	272.0	276.8	276.8	274.8	268.5	263.6	261.8	261.1	275.8	282.1
2008	285.1	289.7	290.9	295.5	295.3	295.7	294.3	288.6	283.9	280.9	285.2	286.5
2009	283.6	281.8	283.4	292.5	293.7	292.4	288.0	281.2	276.2	271.6	266.3	280.1
2010	290.1	289.2	293.9	296.0	296.3	294.4	291.8	288.6	284.9	285.2	284.3	287.5
2011	281.6	274.4	275.0	276.6	281.0	286.1	284.7	279.0	273.9	268.2	261.6	264.5
2012	265.8	267.7	262.0	280.2	293.4	294.4	288.4	280.4	261.4	261.6	269.0	276.6
2013	278.3	281.5	294.8	296.9	296.9	294.2	289.7	283.6	280.8	281.4	282.5	276.1
2014	275.1	277.5	274.6	285.3	292.9	294.9	291.7	286.8	285.5	285.0	284.8	286.3
2015	288.7	289.4	292.2	296.3	296.1	293.3	287.5	280.1	272.1	275.4	278.9	275.9
2016	289.9	292.4	291.8	296.5	296.2	295.6	290.5	285.4	283.3	288.4	288.9	281.6
2017	271.5	277.7	280.9	278.7	281.6	272.4	270.2	268.0	271.0	264.6	269.6	289.9
2018	289.7	292.0	295.0	296.5	296.4	296.0	294.0	287.5	277.9	270.2	266.5	267.3
2019	267.3	268.2	272.7	279.9	289.9	292.7	287.6	278.5	274.2	268.6	273.2	275.6
2020	271.62	271.98	283.50	288.55	293.6	291.7	284.6	276.5	273.5	274.1	268.7	272.7
2021	291.70	294.10	292.60	294.30	296.7	291.7	282.7	274.3				

	Janar	Shkurt	Mars	Prill	Maj	Qershor	Korrik	Gusht	Shtator	Tetor	Nentor	Dhjetor
2021	291.70	294.10	292.60	294.30	296.7	291.7	282.7	274.3				
Mesatarja	275.0	276.3	279.4	286.2	290.5	289.5	285.1	279.4	275.5	273.5	274.7	277.6
Minimumi	245.3	247.1	252.6	264.0	268.6	271.3	270.1	261.1	253.6	248.4	249.3	252.1
Maksimumi	291.7	294.1	294.4	296.9	296.9	296.2	294.3	291.5	289.4	288.3	289.2	288.0

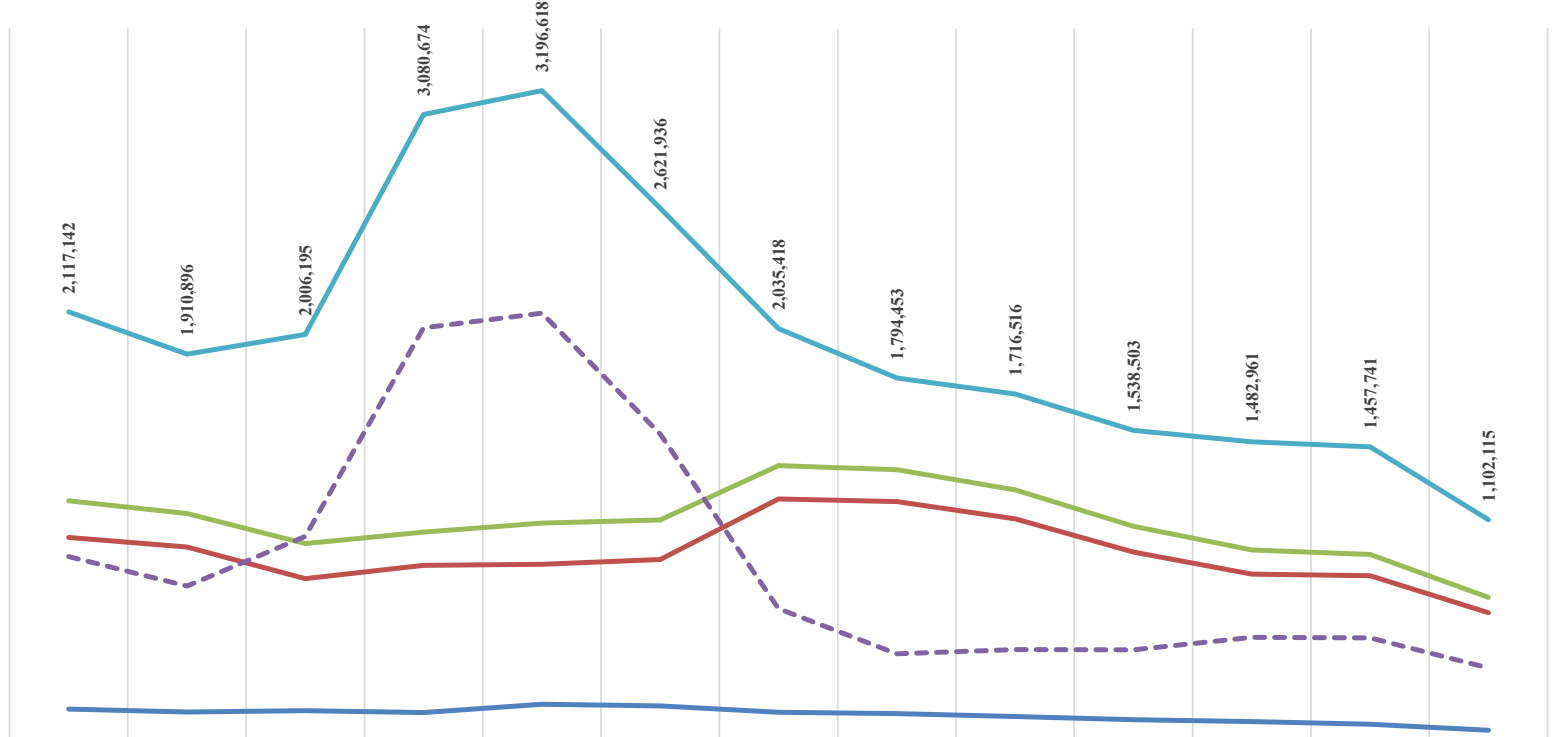


Burimi: OST sha; KESH sha;

HUMBJET NE RRJETIN E SHPERNDARJES 2009-2021 (MWh)

	2009	2010	2011	2012	2013	2014	2015	2016	2017	2018	2019	2020	2021 (8-Mujori)
HUMBJE TEKNIKE NE TL (N/ST)	178,738	163,546	170,937	161,831	201,684	193,208	162,725	155,629	141,707	125,974	117,739	103,729	74,849
HUMBJE TEKNIKE NE ZONAT E OSSH	1,015,450	968,535	814,826	879,616	884,360	908,416	1,203,793	1,190,872	1,106,007	944,587	836,561	828,906	648,418
TOTALI I HUMBJEVE TEKNIKE OSSH	1,194,188	1,132,081	985,763	1,041,447	1,086,044	1,101,624	1,366,518	1,346,501	1,247,714	1,070,560	954,300	932,635	723,267
HUMBJE JOTOKNIKE OSSH	922,954	778,815	1,020,432	2,039,227	2,110,575	1,520,312	668,900	447,952	468,802	467,943	528,661	525,106	378,848
TOTALI I HUMBJEVE OSSH	2,117,142	1,910,896	2,006,195	3,080,674	3,196,618	2,621,936	2,035,418	1,794,453	1,716,516	1,538,503	1,482,961	1,457,741	1,102,115

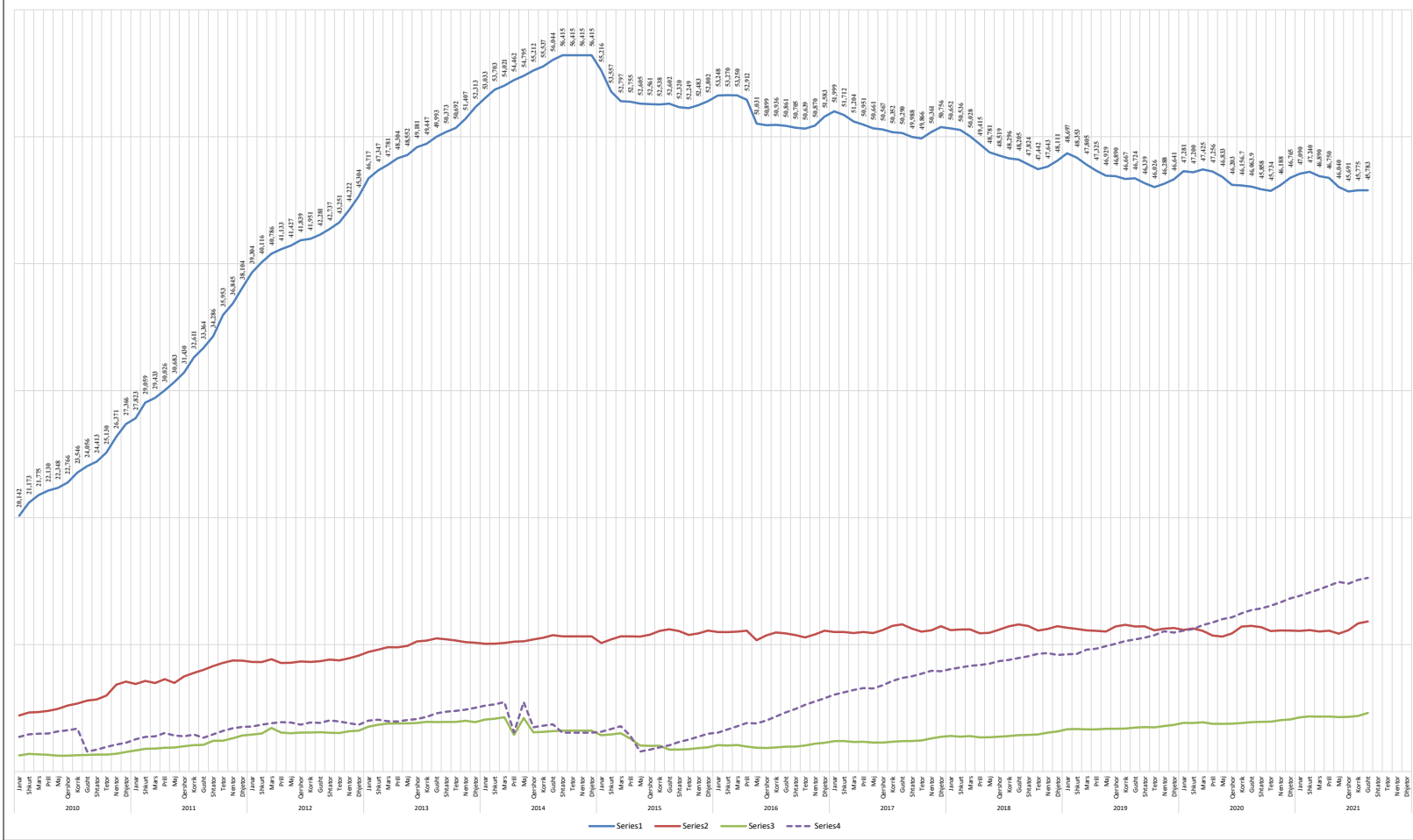
HUMBJET NE RRJETIN E SHPERNDARJES 2009-2021 (MWh)



	2009	2010	2011	2012	2013	2014	2015	2016	2017	2018	2019	2020	2021 (8-Mujori)
HUMBJE TEKNIKE NE TL (N/ST)	178,738	163,546	170,937	161,831	201,684	193,208	162,725	155,629	141,707	125,974	117,739	103,729	74,849
HUMBJE TEKNIKE NE ZONAT E OSSH	1,015,450	968,535	814,826	879,616	884,360	908,416	1,203,793	1,190,872	1,106,007	944,587	836,561	828,906	648,418
TOTALI I HUMBJEVE TEKNIKE OSSH	1,194,188	1,132,081	985,763	1,041,447	1,086,044	1,101,624	1,366,518	1,346,501	1,247,714	1,070,560	954,300	932,635	723,267
HUMBJE JOTOKNIKE OSSH	922,954	778,815	1,020,432	2,039,227	2,110,575	1,520,312	668,900	447,952	468,802	467,943	528,661	525,106	378,848
TOTALI I HUMBJEVE OSSH	2,117,142	1,910,896	2,006,195	3,080,674	3,196,618	2,621,936	2,035,418	1,794,453	1,716,516	1,538,503	1,482,961	1,457,741	1,102,115

2010			2011			2012			2013			2014			2015			2016			2017			2018			2019			2020			2021		
Shuar	Mars	Prill	Shuar	Mars	Prill	Shuar	Mars	Prill	Shuar	Mars	Prill	Shuar	Mars	Prill	Shuar	Mars	Prill	Shuar	Mars	Prill	Shuar	Mars	Prill	Shuar	Mars	Prill	Shuar	Mars	Prill	Shuar	Mars	Prill			
25,415	31,173	27,729	27,729	34,819	34,819	27,729	31,173	34,819	27,729	31,173	34,819	27,729	31,173	34,819	27,729	31,173	34,819	27,729	31,173	34,819	27,729	31,173	34,819	27,729	31,173	34,819	27,729	31,173	34,819	27,729	31,173	34,819			
27,729	31,173	34,819	27,729	31,173	34,819	27,729	31,173	34,819	27,729	31,173	34,819	27,729	31,173	34,819	27,729	31,173	34,819	27,729	31,173	34,819	27,729	31,173	34,819	27,729	31,173	34,819	27,729	31,173	34,819	27,729	31,173	34,819			
34,819	27,729	31,173	34,819	27,729	31,173	34,819	27,729	31,173	34,819	27,729	31,173	34,819	27,729	31,173	34,819	27,729	31,173	34,819	27,729	31,173	34,819	27,729	31,173	34,819	27,729	31,173	34,819	27,729	31,173	34,819	27,729	31,173	34,819		
27,729	31,173	34,819	27,729	31,173	34,819	27,729	31,173	34,819	27,729	31,173	34,819	27,729	31,173	34,819	27,729	31,173	34,819	27,729	31,173	34,819	27,729	31,173	34,819	27,729	31,173	34,819	27,729	31,173	34,819	27,729	31,173	34,819			

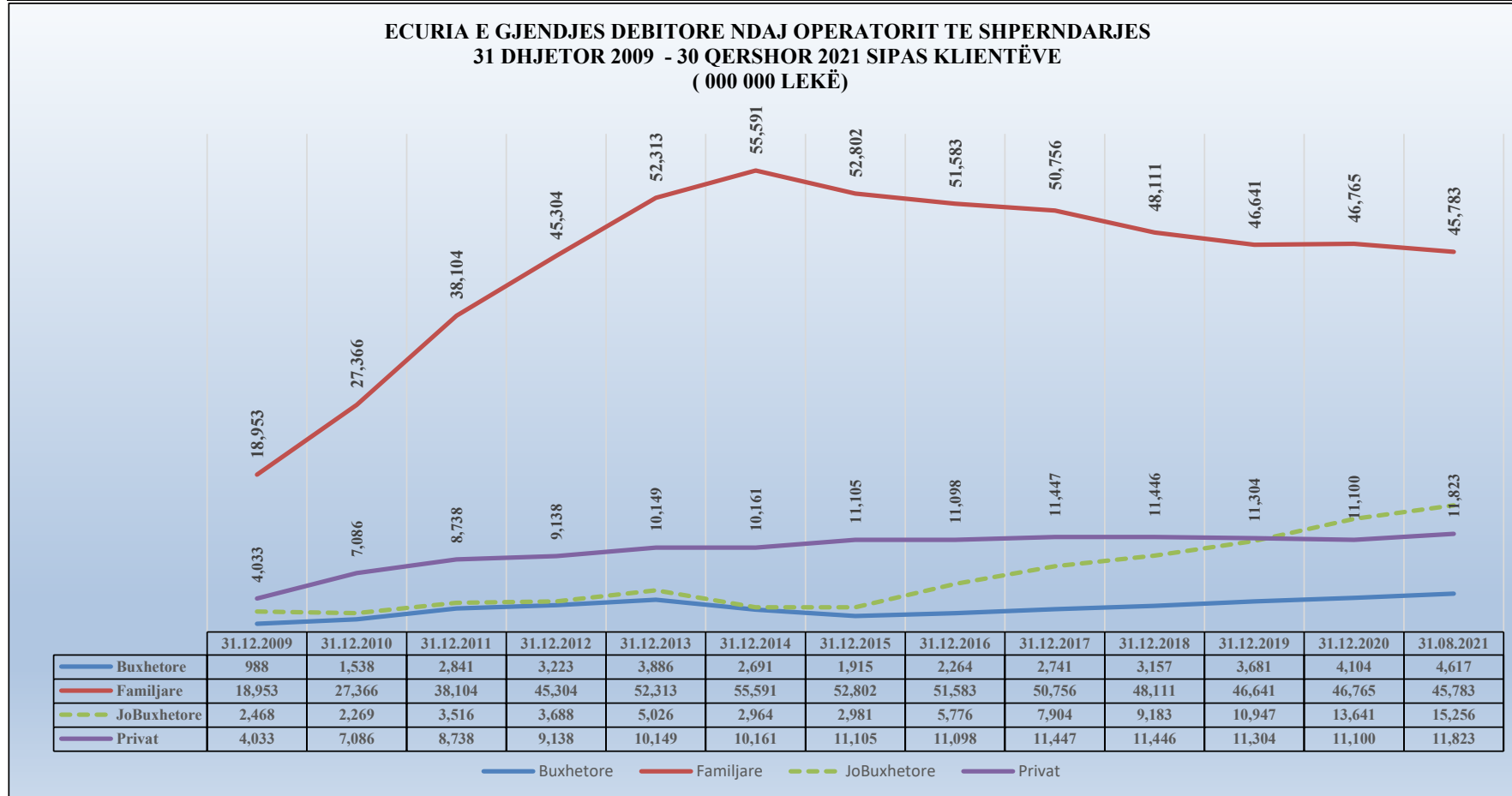
ECURIA E GJENDJES DEBITORE NDAJ OPERATORIT TË SHPËRDARJES SIPAS KATEGORIVE 2010-2021 (000 000/LEKË)



ECURIA E GJENDJES DEBITORE NDAJ OSHEE 31 DHJETOR 2009 - 31 Gusht 2021 (000 000 LEKË)

	31.12.2009	31.12.2010	31.12.2011	31.12.2012	31.12.2013	31.12.2014	31.12.2015	31.12.2016	31.12.2017	31.12.2018	31.12.2019	31.12.2020	31.08.2021
Buxhetore	988	1,538	2,841	3,223	3,886	2,691	1,915	2,264	2,741	3,157	3,681	4,104	4,617
Familjare	18,953	27,366	38,104	45,304	52,313	55,591	52,802	51,583	50,756	48,111	46,641	46,765	45,783
JoBuxhetore	2,468	2,269	3,516	3,688	5,026	2,964	2,981	5,776	7,904	9,183	10,947	13,641	15,256
Privat	4,033	7,086	8,738	9,138	10,149	10,161	11,105	11,098	11,447	11,446	11,304	11,100	11,823
Total	26,442	38,260	53,198	61,353	71,374	71,406	68,803	70,720	72,849	71,897	72,574	75,610	77,478

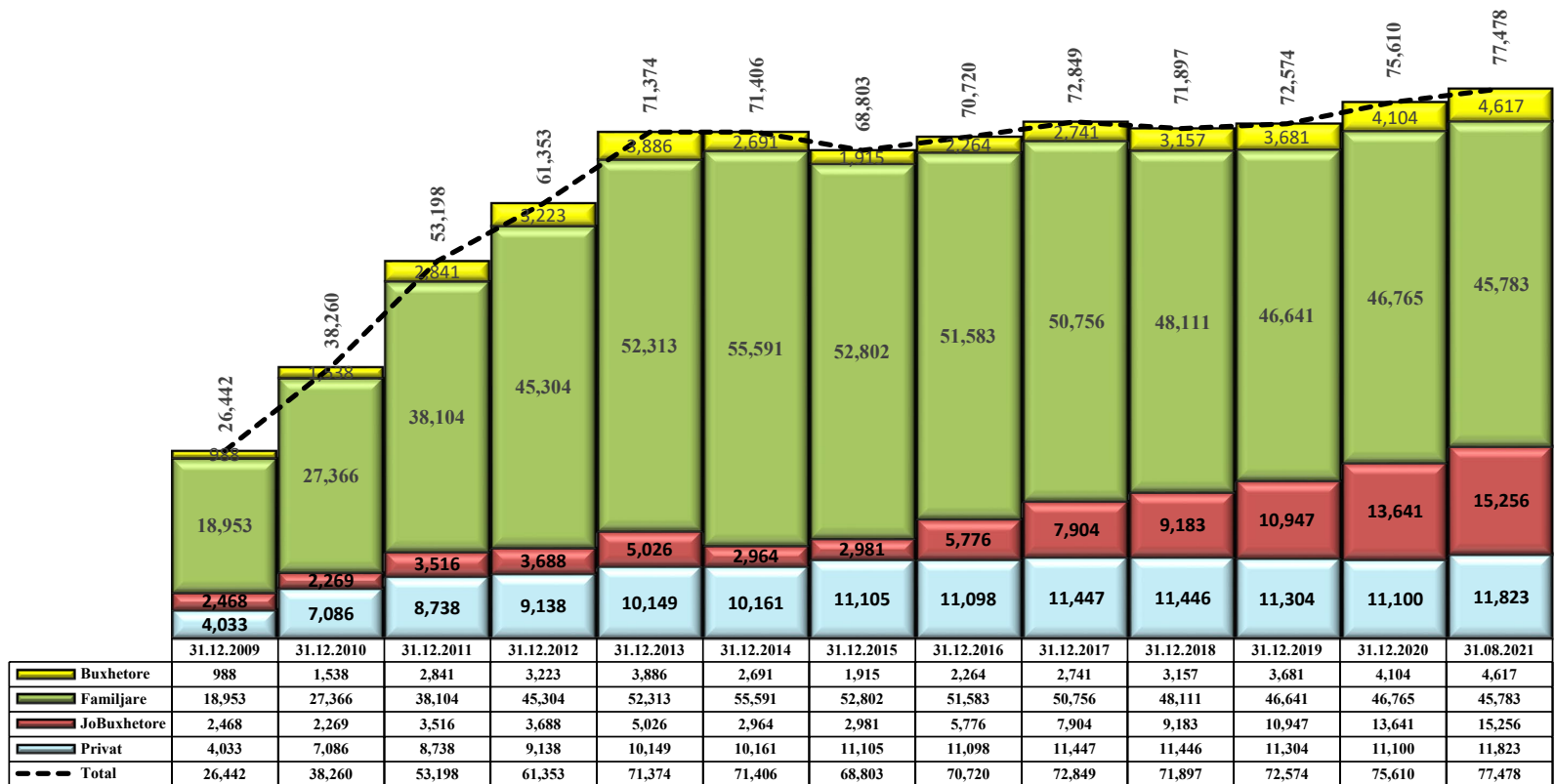
**ECURIA E GJENDJES DEBITORE NDAJ OPERATORIT TE SHPERNDARJES
31 DHJETOR 2009 - 30 QERSHOR 2021 SIPAS KLIENTËVE
(000 000 LEKË)**



Burimi OSHEE sha

	31.12.2009	31.12.2010	31.12.2011	31.12.2012	31.12.2013	31.12.2014	31.12.2015	31.12.2016	31.12.2017	31.12.2018	31.12.2019	31.12.2020	31.08.2021
Privat	4,033	7,086	8,738	9,138	10,149	10,161	11,105	11,098	11,447	11,446	11,304	11,100	11,823
JoBuxhetore	2,468	2,269	3,516	3,688	5,026	2,964	2,981	5,776	7,904	9,183	10,947	13,641	15,256
Familjare	18,953	27,366	38,104	45,304	52,313	55,591	52,802	51,583	50,756	48,111	46,641	46,765	45,783
Buxhetore	988	1,538	2,841	3,223	3,886	2,691	1,915	2,264	2,741	3,157	3,681	4,104	4,617
Total	26,442	38,260	53,198	61,353	71,374	71,406	68,803	70,720	72,849	71,897	72,574	75,610	77,478

**ECURIA E GJENDJES DEBITORE NDAJ OPERATORIT TE SHPERNDARJES
31 DHJETOR 2009 - 31 Gusht 2021 SIPAS KLIENTËVE
(000 000 LEKË)**



PERFORMANCA E OPERATOTRIT TE SHPERNDARJES 2009-2021 (%)

NIVELI I HUMBJEVE (%) 2009-2020												
	Janar	Shkurt	Mars	Prill	Maj	Qershor	Korrik	Gusht	Shtator	Tetor	Nentor	Dhjetor
2009	40.75	37.05	38.05	32.93	33.44	30.75	32.60	30.20	25.34	30.67	33.44	36.89
2010	38.62	35.41	36.90	31.37	35.17	31.45	26.94	29.69	21.47	20.61	22.16	29.05
2011	55.55	38.00	36.95	23.11	24.85	21.29	21.88	19.41	22.95	25.15	32.20	35.70
2012	35.72	59.16	55.23	45.41	38.87	39.77	45.51	45.51	42.09	35.53	41.89	49.32
2013	51.12	48.71	48.29	39.66	39.52	40.33	43.33	38.50	35.08	45.98	48.08	53.04
2014	47.00	42.14	42.78	35.69	36.85	34.10	36.59	36.36	31.67	34.52	32.88	37.54
2015	36.68	31.82	32.88	30.54	31.24	28.60	30.62	29.29	25.30	29.92	30.82	34.50
2016	34.69	29.00	29.93	26.07	26.97	24.35	25.97	25.15	22.12	27.11	29.30	30.99
2017	33.50	27.63	28.66	25.81	25.88	28.31	24.69	23.29	19.79	23.76	23.55	27.90
2018	30.65	24.91	27.22	23.33	23.03	20.76	21.46	20.77	19.32	21.53	22.73	26.70
2019	29.25	23.21	26.5	21.36	22.10	19.92	20.42	19.81	17.54	20.40	21.58	24.76
2020	28.22	21.61	28.36	17.39	19.10	18.65	19.69	18.87	16.80	21.21	22.79	20.49
2021	27.87	20.1	25.92	21.08	17.92	18.34	18.75	17.93				

26.41
23.9
21.79
21.48
21.3

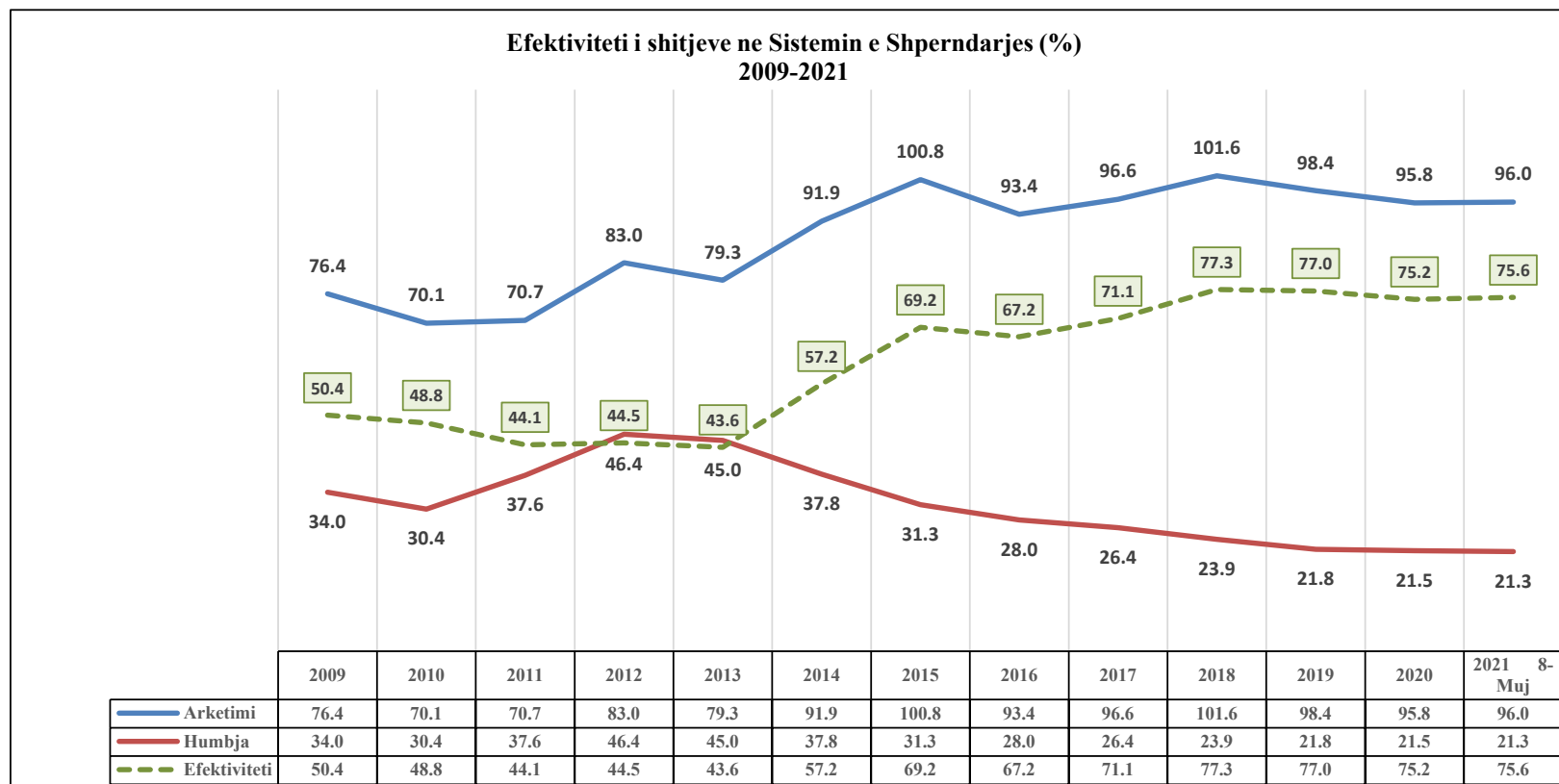
Niveli i Arketimeve (%) 2009-2020												
	Janar	Shkurt	Mars	Prill	Maj	Qershor	Korrik	Gusht	Shtator	Tetor	Nentor	Dhjetor
2009	69.32	85.95	74.38	86.58	86.31	76.37	75.40	72.46	83.20	80.82	61.77	70.01
2010	55.37	66.28	86.63	89.46	86.70	79.42	74.84	124.98	84.20	70.81	56.15	66.48
2011	67.26	57.61	87.66	71.61	96.73	73.00	65.00	81.00	66.00	63.86	51.47	87.30
2012	59.80	79.20	78.50	78.00	94.70	83.50	91.60	102.90	74.00	98.00	72.60	78.00
2013	61.40	63.70	86.20	80.70	79.10	69.60	87.90	90.10	78.50	84.30	89.00	102.00
2014	84.90	77.10	85.90	85.50	81.90	80.20	86.70	83.60	102.60	101.00	101.90	141.00
2015	112.70	120.50	103.70	86.60	95.70	97.10	98.40	104.70	95.30	100.30	92.20	100.70
2016	92.10	87.00	95.60	90.10	99.10	92.00	94.20	96.70	91.50	96.70	90.30	96.70
2017	85.20	87.60	105.70	94.50	105.70	91.80	104.80	97.40	94.60	103.80	92.70	100.10
2018	96.39	95.69	105.82	98.92	111.64	100.16	105.00	102.12	93.03	108.76	96.24	108.94
2019	90.7	92.6	99.8	102.4	102.50	94.00	104.40	99.30	93.90	104.70	89.60	110.70
2020	91.4	91.6	77.5	106.8	101.80	102.20	96.80	95.30	96.60	101.10	91.50	101.80
2021	86.4	88.9	102.1	91	101.20	110.70	96.90	94.10				

96.6
101.6
98.4
95.8
96.0

Efektiviteti i shitjeve (%) 2009-2020												
	Janar	Shkurt	Mars	Prill	Maj	Qershor	Korrik	Gusht	Shtator	Tetor	Nentor	Dhjetor
2009	41.1%	54.1%	46.1%	58.1%	57.4%	52.9%	50.8%	50.6%	62.1%	56.0%	41.1%	44.2%
2010	34.0%	42.8%	54.7%	61.4%	56.2%	54.4%	54.7%	87.9%	66.1%	56.2%	43.7%	47.2%
2011	29.9%	35.7%	55.3%	55.1%	72.7%	57.5%	50.8%	65.3%	50.9%	47.8%	34.9%	56.1%
2012	38.4%	32.3%	35.1%	42.6%	57.9%	50.3%	49.9%	56.1%	42.9%	63.2%	42.2%	39.5%
2013	30.0%	32.7%	44.6%	48.7%	47.8%	41.5%	49.8%	55.4%	51.0%	45.5%	46.2%	47.9%
2014	45.0%	44.6%	49.2%	55.0%	51.7%	52.9%	55.0%	53.2%	70.1%	66.1%	68.4%	88.1%
2015	71.4%	82.2%	69.6%	60.2%	65.8%	69.3%	68.3%	74.0%	71.2%	70.3%	63.8%	66.0%
2016	60.2%	61.8%	67.0%	66.6%	72.4%	69.6%	69.7%	72.4%	71.3%	70.5%	63.8%	66.7%
2017	56.7%	63.4%	75.4%	70.1%	78.3%	65.8%	78.9%	74.7%	75.9%	79.1%	70.9%	72.2%
2018	66.8%	71.9%	77.0%	75.8%	85.9%	79.4%	82.5%	80.9%	75.1%	85.3%	74.4%	79.9%
2019	64.2%	71.1%	73.4%	80.5%	79.8%	75.3%	83.1%	79.6%	77.4%	83.3%	70.3%	83.3%
2020	65.6%	71.8%	55.5%	88.2%	82.4%	83.1%	77.7%	77.3%	80.4%	79.7%	70.6%	80.9%
2021	62.3%	71.0%	75.6%	71.8%	83.1%	90.4%	78.7%	77.2%	0.0%	0.0%	0.0%	0.0%

71.1%
77.3%
77.0%
75.2%
75.6%

	2009	2010	2011	2012	2013	2014	2015	2016	2017	2018	2019	2020	2021 8-Muj
Arketimi	76.4	70.1	70.7	83.0	79.3	91.9	100.8	93.4	96.6	101.6	98.4	95.8	96.0
Humbja	34.0	30.4	37.6	46.4	45.0	37.8	31.3	28.0	26.4	23.9	21.8	21.5	21.3
Efektiviteti	50.4	48.8	44.1	44.5	43.6	57.2	69.2	67.2	71.1	77.3	77.0	75.2	75.6

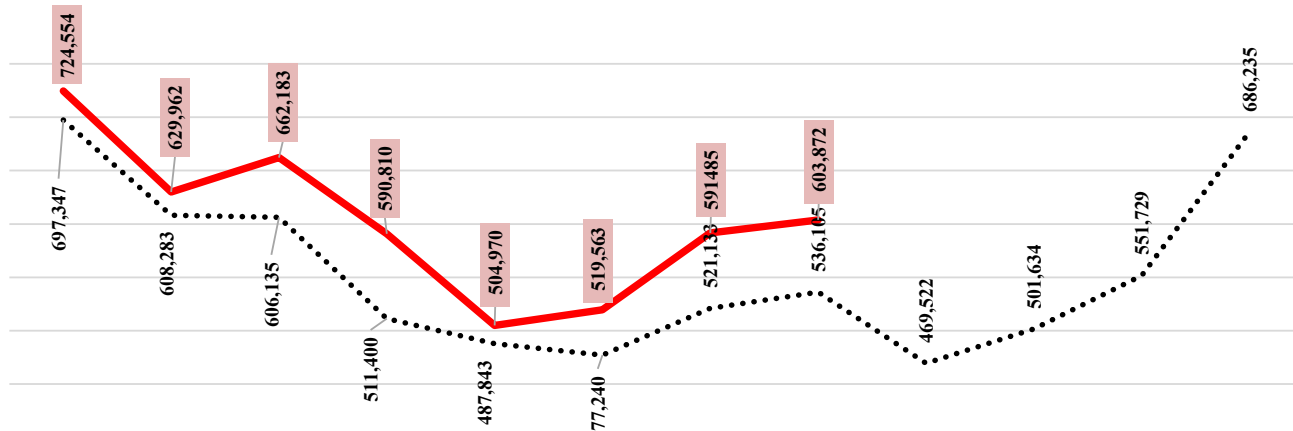


Energji Totale ne Operatorin e Sistemit te Shperndarjes 2009-2021 ne MWh													
	Janar	Shkurt	Mars	Prill	Maj	Qershor	Korrik	Gusht	Shtator	Tetor	Nentor	Dhjetor	VITI
2009	644,987	568,719	589,279	462,709	448,118	427,694	467,863	493,772	439,604	489,635	557,554	639,797	6,229,731
2010	675,343	608,940	610,583	506,275	476,500	464,120	499,241	512,024	460,893	509,793	532,126	660,665	6,516,503
2011	708,264	623,208	634,087	536,286	533,564	495,139	545,315	567,282	512,979	551,132	619,655	710,870	7,037,781
2012	733,973	680,054	596,982	537,950	483,891	489,723	536,891	540,566	469,527	484,706	548,289	749,398	6,851,949
2013	743,846	665,392	673,578	545,600	502,945	511,390	546,696	565,789	493,056	532,555	589,808	774,403	7,145,060
2014	733,468	631,678	645,837	578,948	541,016	501,088	530,554	556,098	492,427	537,280	546,419	640,431	6,935,244
2015	686,041	591,978	594,775	514,282	472,405	465,730	536,160	529,208	459,012	476,969	519,281	649,026	6,494,867
2016	671,884	559,772	573,419	469,803	477,468	463,248	509,916	514,034	451,153	480,236	540,024	688,760	6,399,717
2017	715,886	562,270	545,214	493,731	475,055	485,386	529,805	543,145	451,103	482,629	546,256	667,841	6,498,322
2018	659,778	590,823	597,595	468,417	467,468	468,885	508,892	539,134	465,468	471,407	517,882	681,162	6,436,911
2019	735,813	586,992	559,331	500,485	501,061	500,729	533,842	565,788	471,684	472,833	507,920	639,953	6,576,432
2020	708,611	607,803	589,581	489,236	464,183	463,789	527,801	533,336	482,358	506,280	562,127	669,977	6,605,082
2021	724,554	629,962	662,183	590,810	504,970	519,563	591,485	603,872					

	Janar	Shkurt	Mars	Prill	Maj	Qershor	Korrik	Gusht	Shtator	Tetor	Nentor	Dhjetor
Mesatarja	697,347	608,283	606,135	511,400	487,843	477,240	521,133	536,105	469,522	501,634	551,729	686,235
2021	724,554	629,962	662,183	590,810	504,970	519,563	591,485	603,872				
Diferenca	27,207	21,679	56,048	79,410	17,127	42,323	70,352	67,767				

Burimi OSHEE sha

MESATARJA 10 VJEÇARE E ENERGJISË TOTALE NË RRJETIN E SHPËRNDARJES
SIPAS MUAJVE TË VITIT (MWh)



	Janar	Shkurt	Mars	Prill	Maj	Qershor	Korrik	Gusht	Shtator	Tetor	Nentor	Dhjetor
..... Mesatarja	697,347	608,283	606,135	511,400	487,843	477,240	521,133	536,105	469,522	501,634	551,729	686,235
— 2021	724,554	629,962	662,183	590,810	504,970	519,563	591,485	603,872				

NR	KLIENTET E KUALIFIKUAR	KLIENTET E KUALIFIKUAR PER VITIN 2021													
		Energjia e faturuar ne [MWh]													
		Janar	Shkurt	Mars	Prill	Maj	Qershor	Korrik	Gusht	Shtator	Tetor	Nentor	Dhjetor	Totali [MWh]	
1	N/ST i GSA EL i ri 110kV-T1/694	9,128	8,183	9,056	8,709	9,029	7,922	5,496	0					57,522	
2	N/ST i GSA EL 110kV-T2/960	0	0	0	0			6,576	16,424					23,000	
3	TEC Ballsh	73	62	68	62	56	51	52	53					476	
4	Titan T1,T2	8,210	4,226	11,668	11,488	11,470	9,223	7,117	10,749					74,151	
5	FERROKROM	7,413	6,638	9,847	12,549	12,295	12,447	13,122	13,168					87,480	
6	FUSHE KRUIJE 220kV-T2/058	8,497	2,516	10,007	12,804	13,635	11,522	12,046	12,141					83,167	
7	N/ST 220/6,3Colacent-T1/336	539	902	1,312	1,472	1,402	1,344	1,513	1,554					10,037	
8	EL220-L220KURUM/338	31,422	24,419	13,837	33,251	35,512	33,794	33,860	31,829					237,923	
9	Lajthiza T1/742	367	368	406	408	444	459	515	575					3,542	
10	F.Arrez-T3/653	1,166	957	1,432	881	1,158	711	1,148	1,337					8,790	
11	N/ST i AES EL 110kV-T1/690	7,374	6,447	7,060	7,050	7,370	6,874	7,426	7,415					57,017	
12	N/ST I AES EL 110kV-T2/692	79	4,883	7,347	7,391	7,604	7,287	7,825	7,689					50,106	
14	ENERGJI ASHTA (ASHTA 1) Konsum	0	0	0	0	0	0	0	0					0	
16	ENERGJI ASHTA (ASHTA 2) Konsum	0	0	0	0	0	0	0	0					0	
18	ENERGJI ULEZ (ULEZ) Konsum	0	1	1	0	0	14	28	34					78	
20	ENERGJI SHKOPET (SHKOPET) Konsum	0	0	0	0	0	0	0	0					0	
22	ENERGJI BISTRICE (BISTRICE) Konsum	0	0	0	0	0	0	0	0					0	
24	ENERGJI PESHQESH (AYEN) Konsum	3	2	4	0	4	29	38	34					115	
26	ENERGJI FANG (AYEN) Konsum	1	8	25	25	34	26	32	19					171	
28	ENERGJI BANJA (DEVOLL HPP) Konsum	6	2	11	13	16	25	20	24					117	
30	ENERGJI HEC MOGLICE (DEVOLL HPP) Konsum	5	14	1	4	0	22	14	0					61	
	Totali mujor	74,283	59,627	72,083	96,106	100,029	91,751	96,829	103,046	0	0	0	0	693,754	
		74,210	59,565	72,016	96,044	99,973	91,700	96,777	102,993	0	0	0	0	693,277	

Burimi: OST sha

Devijimet ne Programin e Interkoneksionit 2021 (MWh)

<i>Minus = Hyrje</i>			<i>Plus = Dalje</i>										
Data	Janar	Shkurt	Mars	Prill	Maj	Qershor	Korrik	Gusht	Shtator	Tetor	Nentor	Dhjetor	2021
1	55	2,277	178	63	195	145	34	25					2,974
2	22	2,036	270	103	190	-20	155	-164					2,592
3	84	2,226	-10	118	235	90	638	-418					2,963
4	122	577	28	147	187	35	391	-493					994
5	-569	769	45	55	125	30	65	-642					-121
6	41	21	215	63	103	107	-82	-445					23
7	-6	555	127	-73	107	164	-180	495					1,189
8	254	741	129	-121	45	127	203	382					1,760
9	594	59	206	68	83	43	-145	0					907
10	537	436	110	-3	-16	71	273	-136					1,272
11	21	420	159	53	187	335	418	-362					1,231
12	194	1,141	158	90	109	144	139	-277					1,699
13	-1,630	-480	122	125	905	537	28	-9					-401
14	-1,528	-245	197	140	637	21	68	89					-622
15	433	445	309	26	201	12	-78	243					1,590
16	265	377	307	103	67	-35	-189	400					1,294
17	-288	563	142	112	-173	72	376	-89					717
18	693	225	129	199	334	115	760	24					2,480
19	831	196	179	155	195	83	149	244					2,031
20	-178	35	171	148	168	193	174	427					1,139
21	781	46	201	104	215	-145	257	456					1,914
22	981	-14	123	176	335	-183	138	1097					2,653
23	487	51	-85	90	119	-435	165	477					871
24	208	164	290	190	329	73	209	9					1,471
25	1,869	79	295	258	191	125	63	111					2,992
26	1,588	265	211	238	258	93	139	451					3,244
27	1,946	220	282	199	293	684	-30	499					4,094
28	602	293	180	252	164	60	-75	283					1,760
29	119	0	369	207	116	178	-81	1165					2,073
30	1,166	0	260	132	62	-27	-26	782					2,348
31	2,145	0	267	0	61	0	156	135					2,763
Total	11,839	13,479	5,562	3418	6,029	2,693	4,113	4,759					51,892

Burimi OST sha

Tabela me te dhenat e Alokimit te ATC 2021

Ankandi	Periudha	Shqiperi - Mali Zi						Shqiperi - Greqi						Shqiperi - Kosove											
		ATC e ofruar ne Ankand		ATC e shitur ne Ankand		Cmimi Ankandit		ATC e ofruar ne Ankand		ATC e shitur ne Ankand		Cmimi Ankandit		ATC e ofruar ne Ankand		ATC e shitur ne Ankand		Cmimi Ankandit							
		Export	Import	Export	Import	Export	Import	Export	Import	Export	Import	Export	Import	Export	Import	Export	Import	Export	Import	Export	Import				
		[MW]	[MW]	[MW]	[MW]	[Euro/MWh]	[Euro/MWh]	[MW]	[MW]	[MW]	[MW]	[Euro/MWh]	[Euro/MWh]	[MW]	[MW]	[MW]	[MW]	[Euro/MWh]	[Euro/MWh]	[MW]	[MW]				
Janar	01.01.2021-31.01.2021	100	100	100	100	0.15	4.77	150	150	150	150	0.84	1.28	200	200	200	200	0.30	0.77						
Shkurt	01.02.2021-28.02.2021	100	100	100	100	0.66	0.89	250	250	250	250	0.69	0.4	200	200	200	200	0.28	0.11						
Mars	01.03.2021-31.03.2021	113	100	113	100	6.01	0.68	250	259	250	257	4.75	0.15	82	55	82	55	4.88	0.21						
Prill	01.04.2021-04.04.2021	100	100	100	100	1.69	0.63	250		250		2.568		50	50	50	50	2.11	0.33						
	05.04.2021-07.04.2021	0	0	0	0			150	250	150	250	2.88	0.05												
	08.04.2021-09.04.2021	100	100	100	100	1.95	0.62	250		250		2.568													
	09.04.2021-30.04.2021							250	250	250	250	1.71	0.16												
Maj	01.05.2021-02.05.2021	100	100	100	100	1.77	0.57	250	250	250	250	1.71	0.16	50	50	50	50	0.72	0.37						
	03.05.2021-04.05.2021							0	0	0	0														
	05.05.2021-07.05.2021							250	250	250	250	1.71	0.16	0	0	0	0			0	0	0	0		
	08.05.2021-16.05.2021							350	250	350	250	1.71	0.16	250	250	250	250	1.71	0.16	50	50	50	50	0.82	0.37
	17.05.2021-21.05.2021							250	250	250	250														
22.05.2021-31.05.2021																									
Qershor	01.06.2021-30.06.2021	100	100	100	100	2.55	0.44	250	250	250	250	2.2	0.25	50	50	50	50	0.72	0.51						
Korrik	01.07.2021-31.07.2021	100	100	100	100	0.56	0.66	250	250	250	250	0.88	0.18	200	200	200	200	0.12	0.33						
Gusht	01.08.2021-31.08.2021	100	100	100	100	0.4	1.8	250	250	250	250	1.2	0.47	200	200	200	199	0.03	0.69						

Burimi OST sha

DISBALLANCA 2021 (8 - MUJORI)

	JANAR		SHKURT		MARS		PRILL		MAJ		QERSHOR		KORRIK		GUSHT		TOTALI 2021	
	Dis. Negative [MWh]	Dis. Pozitive [MWh]	Dis. Negative [MWh]	Dis. Pozitive [MWh]	Dis. Negative [MWh]	Dis. Pozitive [MWh]	Dis. Negative [MWh]	Dis. Pozitive [MWh]	Dis. Negative [MWh]	Dis. Pozitive [MWh]	Dis. Negative [MWh]	Dis. Pozitive [MWh]	Dis. Negative [MWh]	Dis. Pozitive [MWh]	Dis. Negative [MWh]	Dis. Pozitive [MWh]	Dis. Negative [MWh]	Dis. Pozitive [MWh]
Pale Pergjegjese Balancuese																		
KURUM INTERNATIONAL	1,917	773	1,035	3,292	446	445	1,035	695	963	1,251	879	772	755	1,382	798	1,371	7,827	9,981
DEVOLL HP	48	61	33	59	140	79	62	97	68	74	41	26	28	50	35	45	455	491
ENERGIA GAS & POWER ALBANIA	1,237	664	775	128	1,438	98	1,305	84	1,562	109	1,080	458	1,816	185	2,493	68	11,706	1,795
AYEN AS ENERGJI	1,326	335	552	198	123	95	80	128	156	163	104	24	66	17	49	23	2,457	982
GSA	627	1,648	195	742	1,198	751	1,034	1,016	1,122	1,863	1,355	2,001	2,018	1,511	2,149	1,283	9,699	10,815
Albanian Energy Supplier AES	1,906	52	2,850	151	2,431	141	1,198	160	1,496	476	1,586	119	2,115	117	2,109	118	15,690	1,335
Energji ASHTA	526	348	207	245	694	534											1,427	1,127
KESH (PPB)	4	107	5,167	69	2	97											5,173	273
KESH GRUP BALANCIMI (KESH & ASHTA)							5,897	2,444	882	7,520	1,271	4,438	1,367	3,992	485	4,257	9,902	22,651
Furnizuesi I Tregut të Lirë FTL (OSHEE Grup)	8,442	45,100	6,902	30,386	7,862	32,239	7,671	29,002	3,129	19,453	4,722	10,121	3,650	13,865	3,252	15,903	45,630	196,069
EZ-5 ENERGY	365	98	168	187	237	21	82	93	260	124	407	17	342	30	437	35	2,297	604
BYLLIS Tec Ballsh (Pa kontrate Furnizimi)	73		62		68		62	0	56	0	51	0	52	0	53	0	476	0
ENER TRADE sh.p.k.		3		72													0	75
KOSTT	6,990	6,725	6,884	4,750	4,179	6,915	1,391	11,620	4,924	7,620	4,215	6,507	4,552	5,008	5,209	6,385	38,345	55,530
OST - HUMBJET	7,477	826	7,581	409	1,015	4,124	10,082	0	7,027	33	594	4,087	2,481	468	2,884	1,109	39,142	11,056
Disbalancat mujore [MWh]		25,804		8,277		25,706		15,439		17,041		12,266		7,382		10,643		122,559
Ofruesi i Sherbimit te Balancimit																		
	Ulje Gjenerimi [MWh]	Rritje Gjenerimi [MWh]	Ulje Gjenerimi [MWh]	Rritje Gjenerimi [MWh]	Ulje Gjenerimi [MWh]	Rritje Gjenerimi [MWh]	Ulje Gjenerimi [MWh]	Rritje Gjenerimi [MWh]	Ulje Gjenerimi [MWh]	Rritje Gjenerimi [MWh]	Ulje Gjenerimi [MWh]	Rritje Gjenerimi [MWh]	Ulje Gjenerimi [MWh]	Rritje Gjenerimi [MWh]	Ulje Gjenerimi [MWh]	Rritje Gjenerimi [MWh]	Ulje Gjenerimi [MWh]	Rritje Gjenerimi [MWh]
KESH sh.a. OSHB	39,180	20,968	25,929	8,493	33,615	8,926	48,133	53,776	18,228	10,506	13,322	3,180	9,757	5,334	7,553	4,614	195,717	115,798
DEVOLL HP OSHB							401	85	1,851	1,464	73	49	92	0	150	293	2,566	1,891
AYEN AS ENERGJI OSHB									27	23	0	19	0	0	0	0	27	42
Energji Balancuese mujore [MWh]		-18,211		-17,436		-24,689		5,327		-8,112		-10,147		-4,515		-2,796		-80,579

Regjistri Pjesmarresve te Tregut (viti 2021) 6-mujori		PRODHUES	P	
		TREGTUES	T	
		FURNIZUES	F	
		FURNIZUES I SHËRBIMIT UNIVERSAL	FSHU	
		SHPERNDARJE	SH	
Nr	Emri i Subjektit	EIC Code	data e regjistrimit	Roli ne TEE
1	Albanian Energy Supplier	54X-AEG-02-1603G	26.05.2015	T; F
2	AXPO Albania	23X--150330-AA-K	28.1.2020	T; F
3	Ayen AS Energji	23X--150416-A—N	17.12.2014	P; T; F
4	Ayen Energy Trading	23X--140426-AY-W	04.05.2014	T; F
6	Devoll Hydropower	23X--150409-DHP5	11.06.2015	T; F
8	Energji Ashta	54X-HECASHTA-059	25.05.2012	P
9	Energy Supply-AL	34X-0000000017-C	15.05.2013	T; F
11	GEN-I Tirana	23X---120709GEN0	31.01.2011	T; F
13	Green Energy Trading Albania	23X--150702GE--3	01.07.2015	T
14	Grupi Sistemeve Automatikë	22XGSA-----N	09.05.2011	T; F
15	Korporata Elektroenergjitike Shqiptare	23X--130918APC-M	25.04.2011	P; T
16	KURUM International	23X--131115KI--1	17.12.2013	P; T; F
17	NOA Energy Trade	23X--150630-NE-6	10.03.2015	T; F
18	Operatori i Sistemit të Shpërndarjes - OSSH sh.a.	54X-10101FT022OP	19.02.2020	SH
19	Stravaj Energy	54X-STRAVAJ-E086	25.04.2014	P; T
20	WENERG	54X-WENERG---10E	10.06.2015	P
22	Energy Market Albania	54X-ENMARKETAL99	23.03.2017	TF
23	Grid Energy	54X-GRID-ENERGYR	05.04.2017	T; F
24	Energy Financing Team Tirana	54X-EFT-TIRANA-V	24.08.2017	T; F
25	Alpiq Energy Albania	23X--141204AEA-T	29.04.2011	T; F
26	URADRIN	54X-100ID101218J	10.08.2018	F
27	Energia Gas and Power Albania shpk	23x-150309-LT-Y	22.10.2018	T; F
28	RENRGY Trading Group	54X-10IRN102618R	12.11.2018	T,F
29	Ener Trade shpk	54X-10 IET091118	21.12.2018	T; F
30	Power and Gas Operations	54X-10IPG2307196	23.07.2019	T
31	ENSCO Trading (Albania) sh.p.k	54X-110IESA1019G	02.12.2019	T
32	KESH sh.a	23X--130918APC-M	16.12.2019	F
33	Furnizuesi i Tregut të Lirë - FTL sh.a.	54X-1010IFT022OP	19.02.2020	T; F
34	Furnizuesi i Shërbimit Universal - FSHU sh.a.	54X-0101IFSH022Q	19.02.2020	F
35	EZ-5 Energy shpk	54X-11LKE250319U	25.03.2019	T;F
35	Hec Arsti shpk	54X-L-101H11A-IJ	27.03.2021	p
36	Hec Lengarica & Energy shpk	54X-L-1010H-LENU	09.07.2021	p

Burimi: OST sha

